

# ASSEMBLY INSTRUCTION

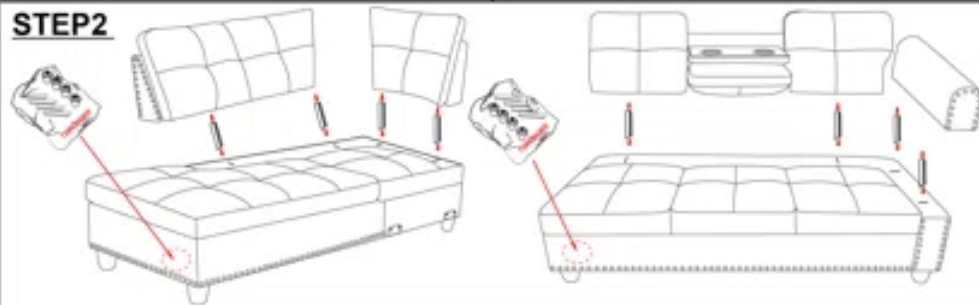
Please follow below Assembly Instruction step by step.

HARDWEAR LIST			
NO.	DESCRIPTION		QTY (pcs)
A	 leg		12
B			8

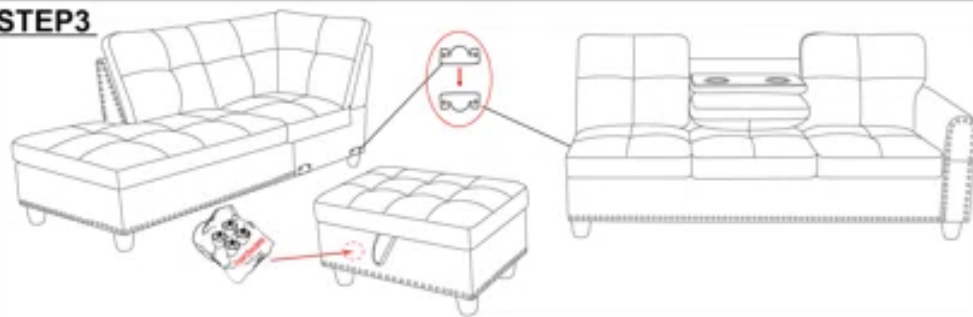
**STEP1** ATTENTION:  
LEGS LOCATION:  
Please check zipper  
compartment underneath the seat area.



## STEP2



## STEP3



## STEP4



# ASSEMBLY INSTRUCTION

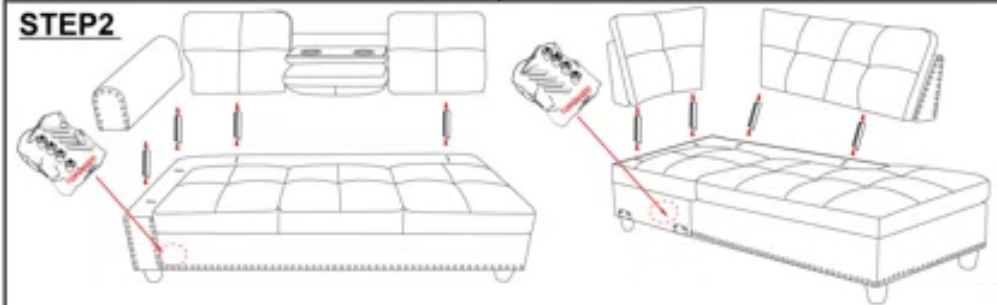
Please follow below Assembly Instruction step by step.

HARDWEAR LIST			
NO.	DESCRIPTION		QTY (pcs)
A	 leg		12
B			8

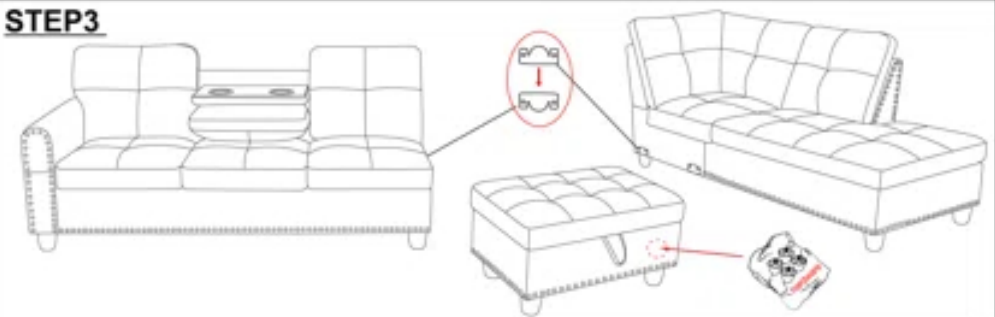
**STEP1** ATTENTION:  
LEGS LOCATION:  
Please check zipper  
compartment underneath the seat area.



## STEP2



## STEP3



## STEP4

