



## User Manual

---

### 2 / 3 / 5.3 / 8 Gallon SoftStep® Semi-Round Step Trash Can with AbsorbX® Odor Control System

(IP02DSS / IP03DSS / IP05DSS / IP08DSS)



This appliance is not intended for use by persons (including children) with reduced physical, sensory or mental capabilities, or lack of experience and knowledge, unless they have been given supervision or instruction concerning use of the appliance by a person responsible for their safety. Children should be supervised to ensure that they do not play with the appliance.

## About your iTouchless® Trash Can

The **iTouchless® Step Pedal Trash Can with AbsorbX® Odor Control System** is the softest step you will experience in a trash can. The ergonomically-designed pedal requires minimal force to operate. The gentle lid close is smooth and silent. The easy to replace air damper means this step trash can will provide years of like-new performance.

It also features a removable inner bucket for quick and easy emptying. The finish is fingerprint-proof, smudge-resistant, and easy to clean.

Your iTouchless® Step Pedal Trash Can provides all of the elegance, convenience, and durability you could hope for in a trash can!

## Features

- Quiet lid opening and closing
- Extra-wide lid opening accommodates larger or bulky items
- Easy to replace air damper for years of like-new performance
- Convenient carry handle for easy mobility
- AbsorbX® Odor Control System absorbs odors, keeping the surrounding area smelling fresh and clean – your first filter is included!

## Contents of the Box

- Trash Can
- Inner Bucket
- Replaceable Air Damper pre-installed
- One (1) AbsorbX® Odor Filter pre-installed (lasts up to 3 months)\*
- User Manual

*\*See "How to Install or Replace the AbsorbX® Odor Filter" section*

## Register your Product

Visit [itouchless.com/register](https://itouchless.com/register) to register your product for simple warranty service and to receive product updates and special offers.

**Product Model # IP02DSS / IP03DSS / IP05DSS / IP08DSS**

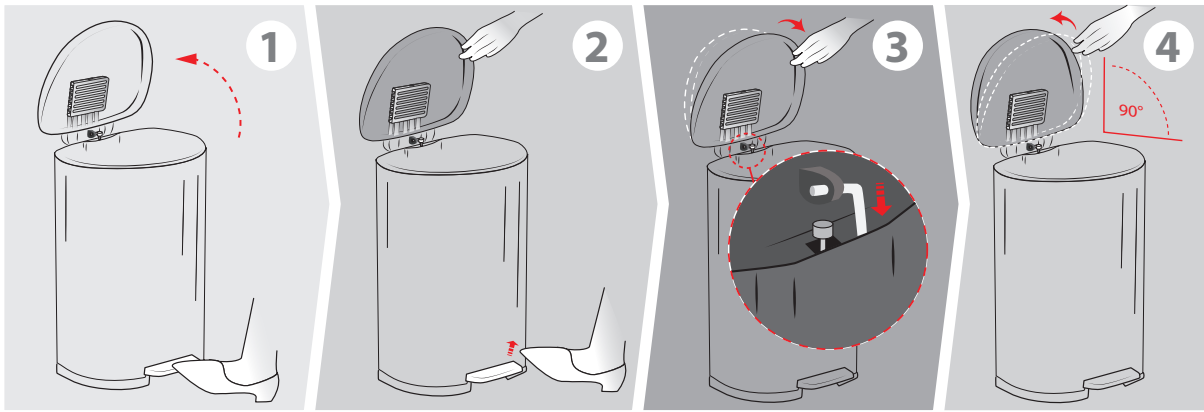
## We're here to help!

If you have any questions or concerns about this product, please contact iTouchless Customer Support for assistance. You can reach us at **1-844-660-7978** or [support@itouchless.com](mailto:support@itouchless.com).

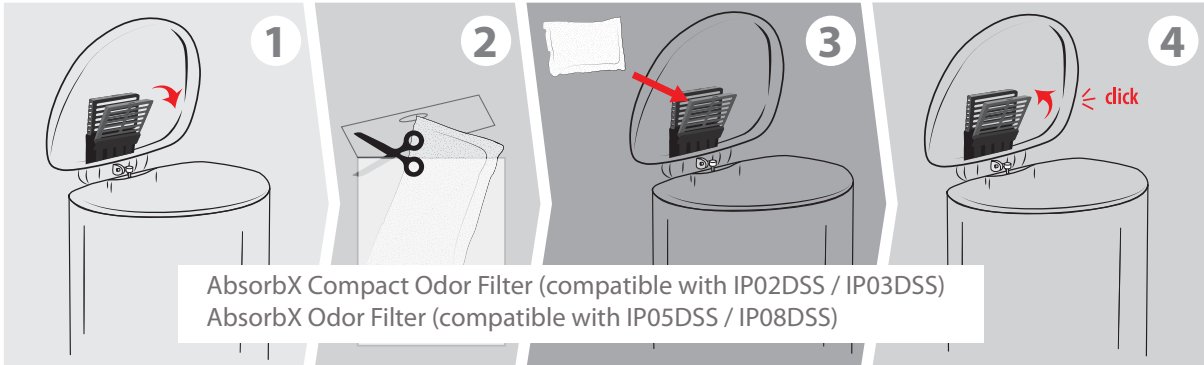
Your 100% satisfaction is our #1 goal!

## Attention

- This product is not intended for use by children 12 years of age or younger. Adult supervision is required.
- Clean the trash can body only with products safe for use on stainless steel.
- Do not press or force the lid to close. Lid will close automatically after you release the pedal.
- Ensure there is enough room to operate the trash can without blocking the opening and closing of the lid.
- Do not overstuff trash bag. It may cause tearing or difficulty removing.

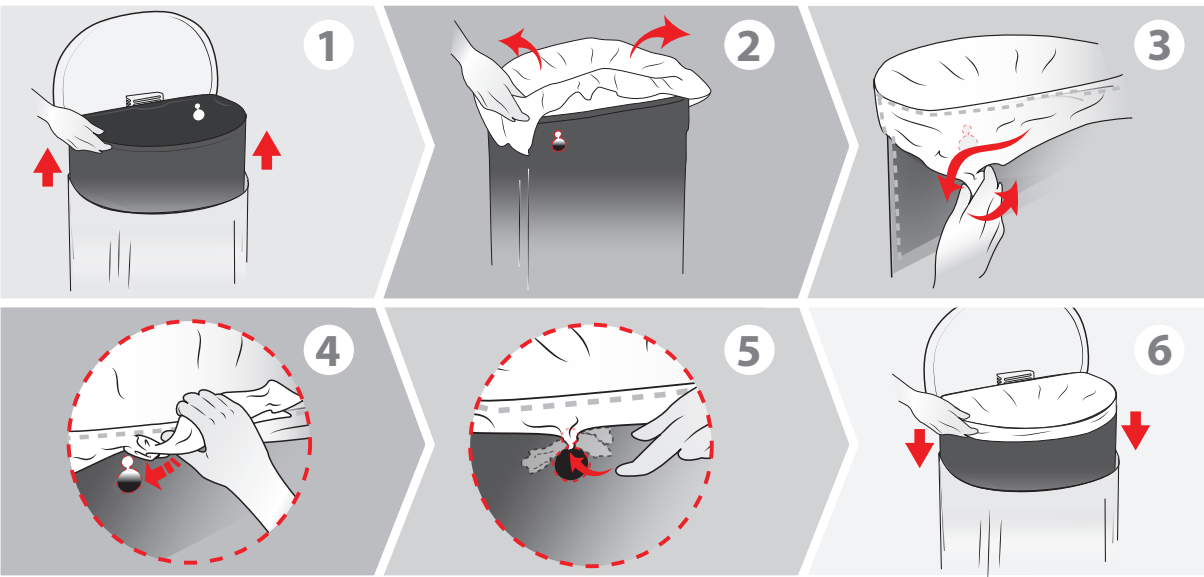


How to  
Keep the  
Lid Open

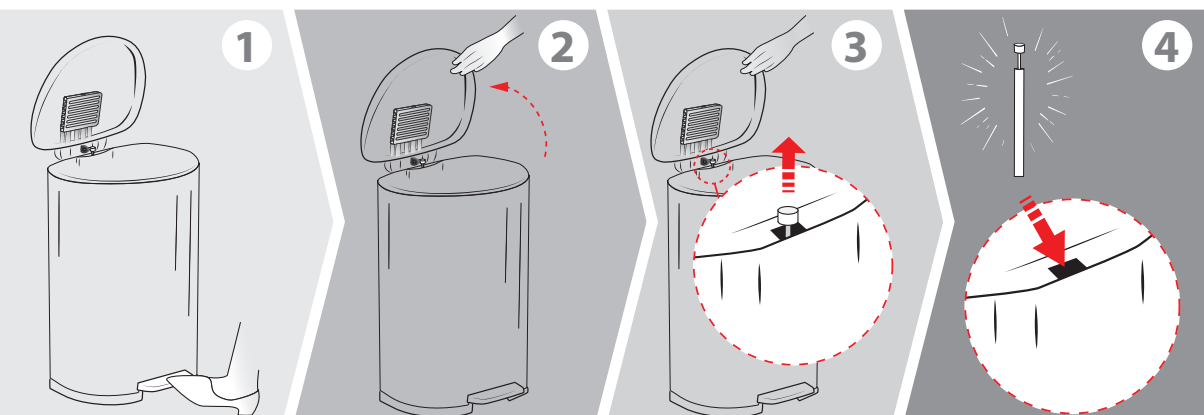


How to  
Install or  
Replace the  
AbsorbX®  
Odor Filter

\*Order replacement AbsorbX filters at [www.itouchless.com/absorbx](http://www.itouchless.com/absorbx)



How to  
Change the  
Trash Bag



How To  
Replace the  
Air Damper

## Parts & Accessories

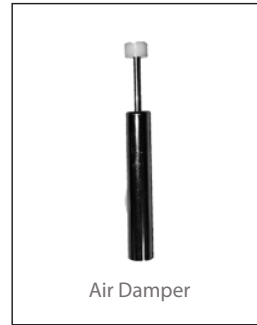
Order at [itouchless.com/parts](http://itouchless.com/parts)



Inner Bin



Premium Trash Bags



Air Damper



AbsorbX® Compact Odor Filter  
(compatible with IP02DSS / IP03DSS)



AbsorbX® Odor Filter  
(compatible with IP05DSS / IP08DSS)

## One (1) Year Limited Warranty

iTouchless® Step Pedal Trash Can is distributed by iTouchless Housewares & Products, Inc. (iTouchless) with the highest quality components and most advanced technologies available. The trash can is warranted to be free from defects in material and workmanship, given normal use and care, for 365 days from the date of the original purchase with proof of purchase within the United States and Canada. iTouchless will only honor warranty requests from orders placed with our authorized dealers. Items sold as used, floor sample or refinished are sold solely under the terms and conditions of the selling party; the Manufacturer will not warrant such purchase. iTouchless will repair or replace a working condition unit thereof which fails as the result of such a defect during the warranty period.

The warranty is the customers' exclusive remedy for product defect and does not apply to:

- User modification
- Attachments to product by user that causes damage
- Any product, on which the seals and/or serial numbers have been broken, removed, tampered with, defaced or altered in any manner
- Damage caused by abuse, misuse, accident, water or theft

Except as stated above, iTouchless makes no express or implied warranties as to any product, in particular, makes no warranty of merchantability or of fitness for any particular purpose. iTouchless shall not be liable for consequential or incidental damages arising from any product defect. Our Liability is limited to the replacement of any defective product. iTouchless expressly disclaims all warranties not satisfied in this limited warranty. Any implied warranties that may be imposed by law are limited to the terms of this limited warranty. The can body and inner bucket are not covered by this warranty.

If Trash Can should fail during the warranty period, contact us through <http://www.itouchless.com/contacts/> to submit a request for warranty service. For additional details, please refer to the warranty email that iTouchless will provide. The required warranty fee is subject to location. Fee references are as following: for Contiguous 48 U.S. States \$9.95 and up, for Canada \$19.95 and up, for Alaska and Hawaii \$29.95 and up.

Subject to the above conditions, we will ship a working unit to you after payment has been provided for the warranty service fee. This warranty gives you specific legal rights. However, you may also have other rights that vary from state to state and province.