


ASSEMBLY INSTRUCTIONS

Counter Height Table

ASSEMBLY
REQUIREMENTS

2-Person
Assembly

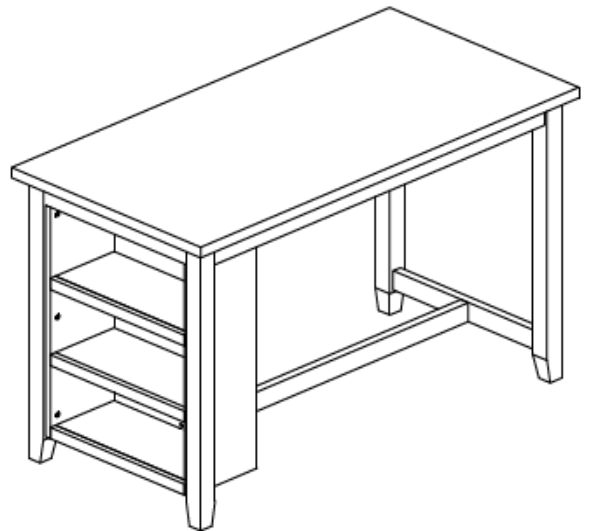
Assembly Time
(Approximate) 60 Minutes

Tools Required
(Not Provided)  Phillips Screwdriver

Thank you for purchasing our product!

Please refer and use this assembly instruction to assemble the product. Contact our customer service department in case there are any missing or damage parts or hardware. Replacement parts are normally shipped within 2 or 3 days.

We appreciate your business!



IMPORTANT NOTICE - IMMEDIATELY AFTER OPENING CARTON BOX, REMOVE THE TIE-DOWN STRAPS AND STAPLES THAT ARE USED TO SECURE THE PARTS TO PREVENT SCRATCHING THE PARTS.

ASSEMBLY PREPARATION

1. Remove all packaging materials, staples and packing straps from the carton.
2. Refer to Parts List and Hardware List, and ensure parts and hardware are correct before assembly.
Contact customer service for missing parts.
3. Place all wooden parts on a clean, flat and soft surface (e.g. carpet or rug) to prevent scratch and damage to parts.

SAFETY PRECAUTION

1. KEEP ALL HARDWARE PARTS OUT OF REACH OF CHILDREN.
2. DISPOSE PLASTIC PACKAGING MATERIAL IMMEDIATELY TO AVOID ANY RISK OF SUFFOCATION TO CHILDREN AND ANIMALS.

TIPS FOR ASSEMBLY

1. Allow ample room for assembly and in close proximity to where product will be placed.
2. Assemble the product on a surface that does not scratch or damage the exterior gloss and finish of the furniture.
3. Identify all of the parts, hardware and quantities required for each step.
4. During assembly, do not over-tighten any fittings as this may cause damage.
5. DO NOT USE POWER TOOLS TO ASSEMBLE THIS PRODUCT.
6. Always place the product on a flat, level surface.
7. Do not sit or stand on the partially assembled product; only use the product for which it is intended.

CARE AND MAINTENANCE

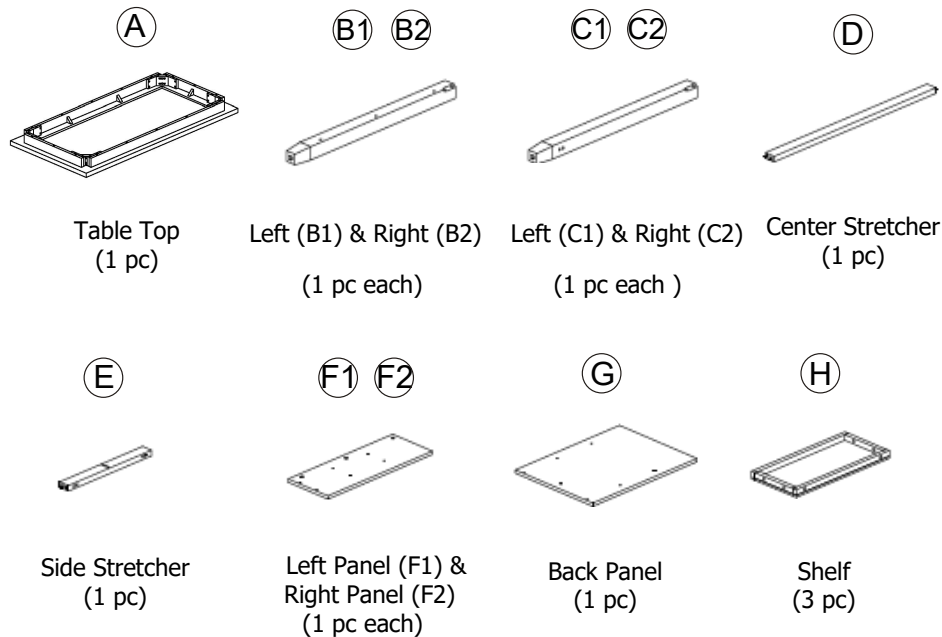
- Use a slightly damp cloth to clean the product. Do not use bleach or abrasive cleaning material.
- Check all the fittings periodically and re-tighten as necessary. Do not use the product if any of the parts is damaged or broken.
- Never allow any kind of liquid to remain on your furniture. Absorption can cause wood to warp or delaminate.
- Do not place hot items (e.g. hot drinks) directly onto the wood surface.
- Do not drag and/or pull the furniture.

This product is for indoor and household use only - not for commercial use.

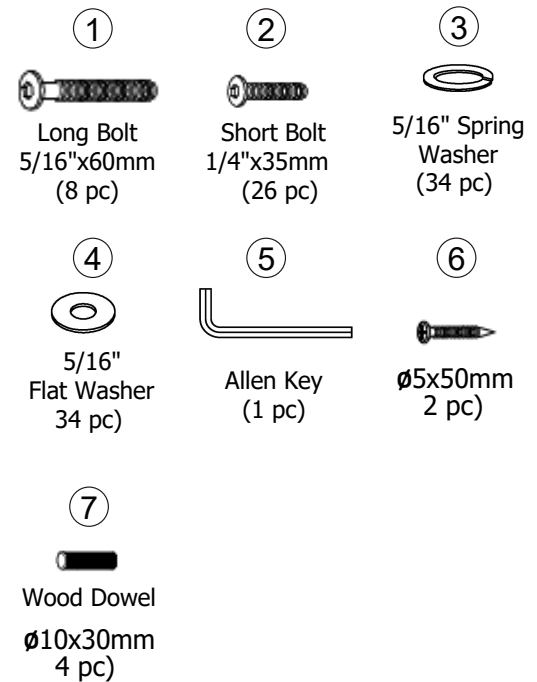
ASSEMBLY INSTRUCTIONS

Counter Height Table

PARTS LIST

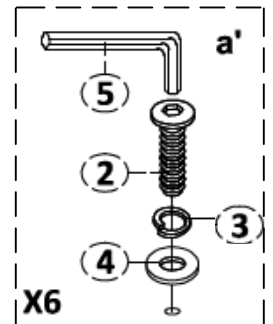
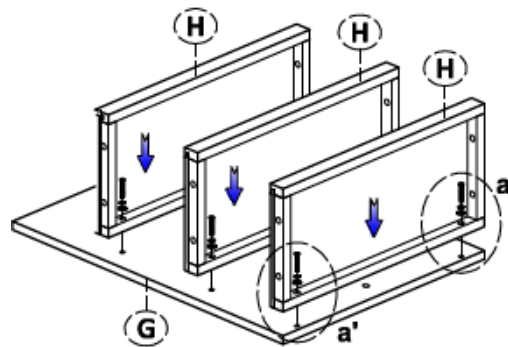


HARDWARE LIST



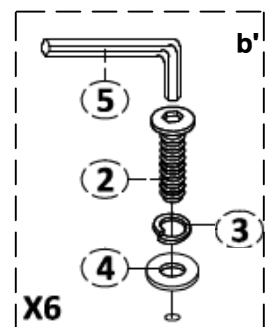
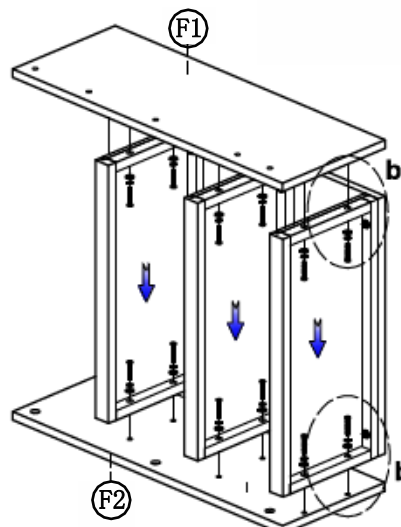
STEP 1

- With the bottom-side facing up, lay Back Panel (G) on a material that does not scratch or damage the part.
- Position Shelf (H) on (G) as shown and align bolt holes on (H) and (G).
- Use Short Bolt (2) fitted with Spring Washer (3) and Flat Washer (4) to fasten (H) to (G).
- Use Allen Key (5) to drive (2). Do not tighten (2) completely until both bolt are in place on each shelf. Do not over-tighten.



STEP 2

- With the exterior surface facing down lay a piece of Right Panel (F2) on a material that does not scratch or damage the part - note the orientation of (F2).
- Position Shelf & Back Panel assembly from STEP 1 over (F2) as shown and align bolt holes on Shelf (H) and (F2).
- Use Short Bolt (2) fitted with Spring Washer (3) and Flat Washer (4) to fasten (H) to (F2).
- Use Allen Key (5) to drive (2). Do not tighten (2) completely until both bolts are in place on each shelf. Do not over-tighten.
- Place the Left Panel (F1) on top of Shelves (H) and use the same procedure above to fasten (F1) to (H).

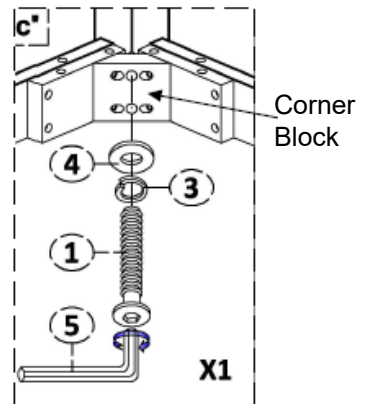
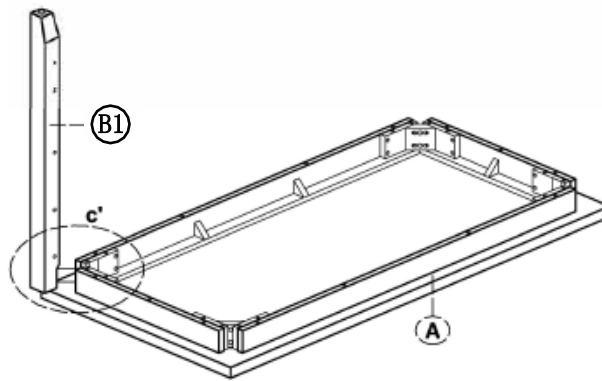


ASSEMBLY INSTRUCTIONS

Counter Height Table

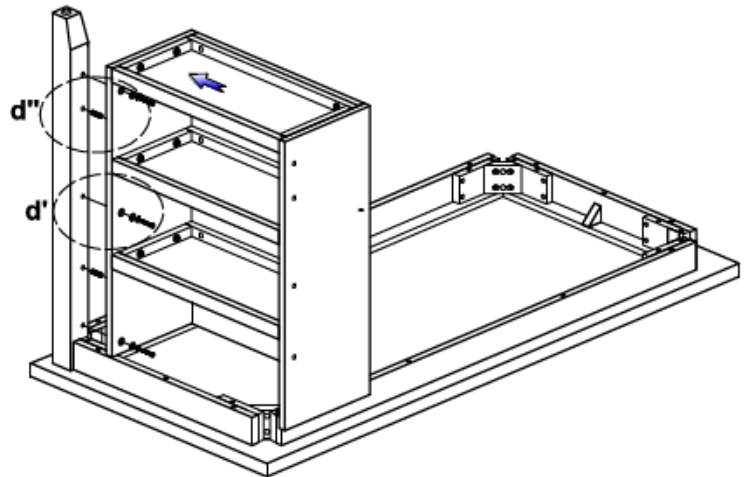
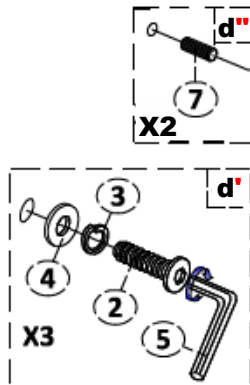
STEP 3

- With the bottom-side facing up, lay Table Top (A) on a material that does not scratch the part.
- Position Right Leg (B1) against the corner of the table aprons and align the screw holes on the corner block and (B1).
- Use Long Bolt (1) fitted with Spring Washer (3) and Flat Washer (4) to fasten (B) to corner block.
- Use Allen Key (5) to drive (1). Do not tighten (1) completely until both bolts are in place on each shelf. Do not over-tighten.

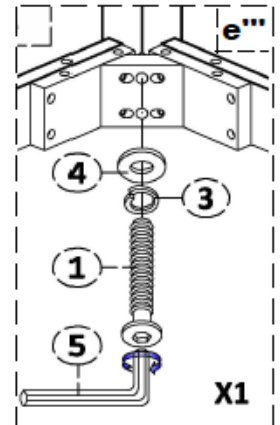
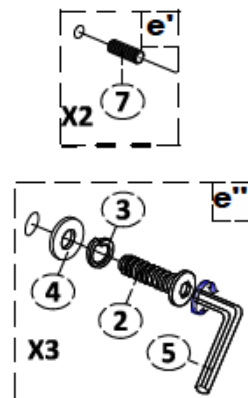
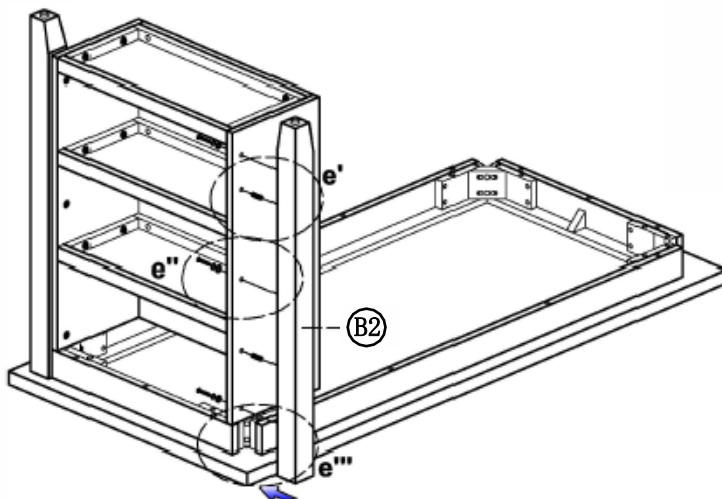


STEP 4

- Position shelf assembly from STEP 2 bottom-side up as shown.
- Attach shelf assembly to Right Leg (B2) via Wood Dowel (7).
- Use Short Bolt (2) fitted with Spring Washer (3) and Flat Washer (4) to fasten shelf panel to (B2).
- Use Allen Key (5) to drive (2). Do not tighten (2) completely until all 3 bolts are in place on each shelf. Do not over-tighten.



STEP 5



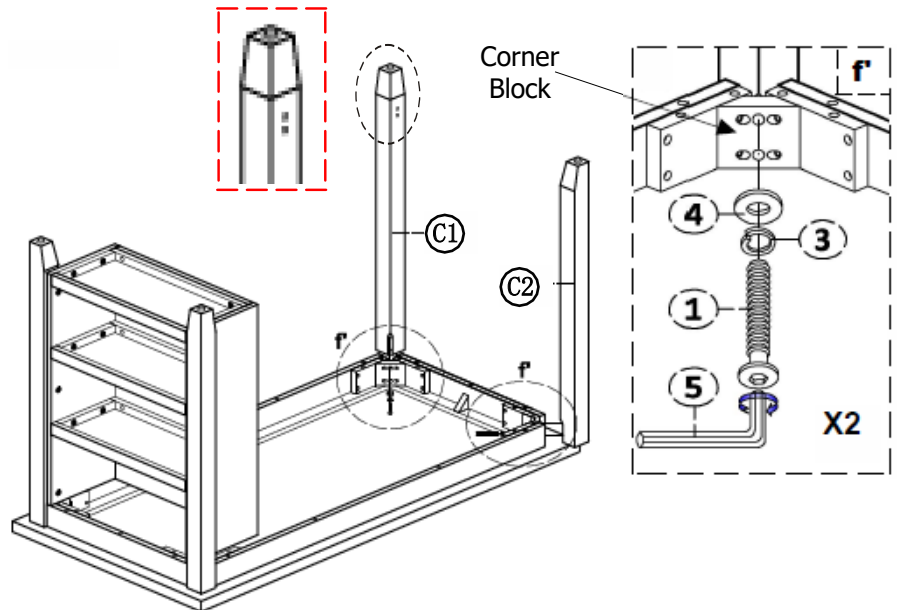
- Attach Left Leg (B2) to shelf panel via Wood Dowel (7) and against the corner of the table aprons.
- Align the screw holes on the corner block and at the base of (B2) and use Long Bolt (1) fitted with Spring Washer (3) and Flat Washer (4) to fasten (B1) to corner block.
- Use Short Bolt (2) fitted with Spring Washer (3) and Flat Washer (4) to fasten shelf panel to (B2).
- Use Allen Key (5) to drive (1) & (2). Do not tighten (1) & (2) completely until all of the bolts are in place on each shelf. Do not over-tighten.

ASSEMBLY INSTRUCTIONS

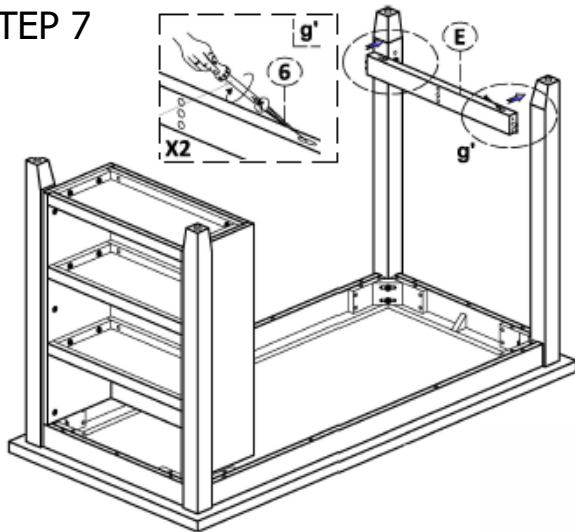
Counter Height Table

STEP 6

- Position Right Leg (C1) against the corner of the table aprons and align the screw holes on the corner block and (C1).
- Use Long Bolt (1) fitted with Spring Washer (3) and Flat Washer (4) to fasten (C1) to corner block.
- Use Allen Key (5) to drive (1). Do not tighten (1) completely until both bolts are in place on each shelf. Do not over-tighten.
- Use the same procedures above to install Left Leg (C2).

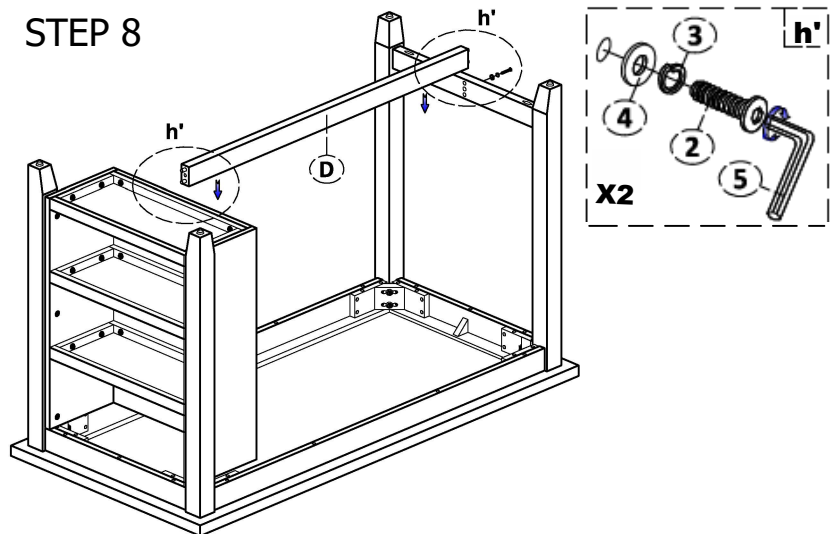


STEP 7



- Fit Side Stretcher (E) between Leg (C1 & C2) and align the screw holes on (E) and (C1 & C2).
- Use a Phillips screwdriver to drive Screw (6) to fasten (E) to (C1 & C2). Do not over-tighten.

STEP 8



- Fit Center Stretcher (D) between Side Stretcher (E) and Back Panel and align the screw holes on each part.
- Use Short Bolt (2) fitted with Spring Washer (3) and Flat Washer (4) to fasten (D) to Side Stretcher and Back Panel.

STEP 9

With assistance, set the table right-side up.

The assembly of the table is complete.

