

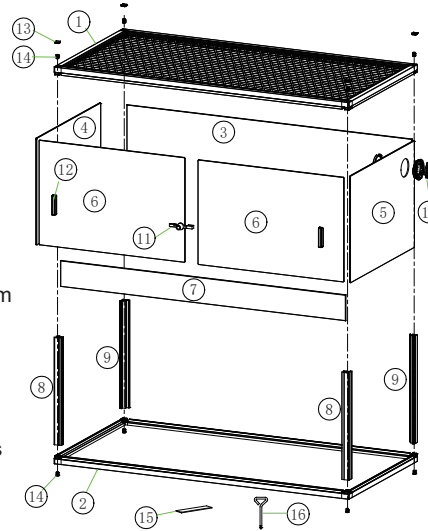
ALUMINUM LIGHT-WEIGHT REPTILE HABITAT INSTRUCTION MANUAL

Product Overview

The RKA series is a lightweight aluminum alloy terrarium. It features a detachable sliding door design for easy and quick assembly, making installation convenient. The top is designed with perforations to promote air circulation and provide optimal lighting conditions. There are pre-drilled cable holes in the lid for easy power connection of equipment. This product comes in various sizes, and each size offers multiple color options.

Product List

- 1.Top frame: 1 set
- 2.Bottom frame: 1 set
- 3.Back panel: 1 pc
- 4.Left side panel: 1 pc
- 5.Right side panel: 1 pc
- 6.Door glass: 2 pcs
- 7.Front panel: 1 pc
- 8.Front support aluminum strips: 2 pcs
- 9.Rear support aluminum strips: 2 pcs
- 10.Cable pass: 1 set
- 11.Glass lock: 1 set
- 12.Door handles: 2 pcs
- 13.Screw covers: 4 pcs
- 14.Corner screws: 8 pcs
- 15.3M adhesive: 2 pcs
- 16.Screwdriver: 1 pc



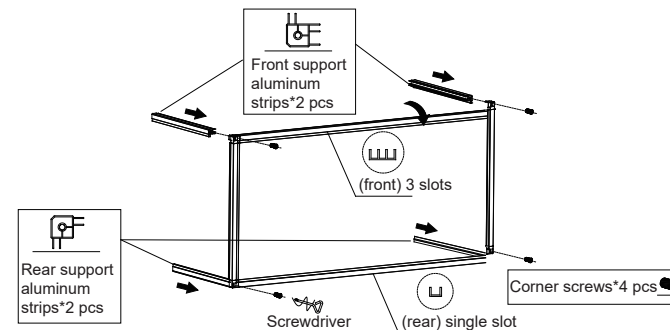
Installation procedure

1. Assemble the Bottom Frame and Front/Rear Support Aluminum Strips

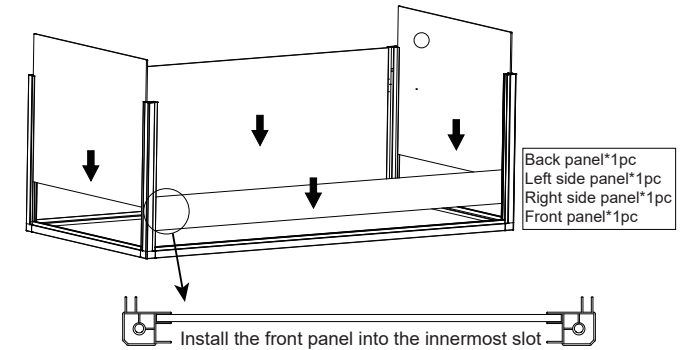
Installation Tips:

- Place the bottom frame in the direction shown in the below diagram.
- Fix the rear support aluminum strip.
- Fix the front support aluminum strip.

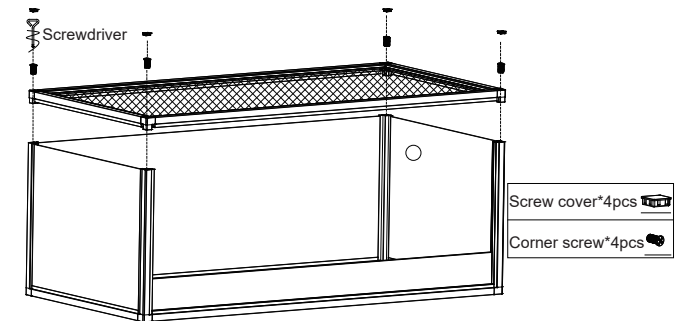
Note: During installation, pay attention to the orientation of the support aluminum strips. The front strip should have three slots, and the rear strip should have a single slot.



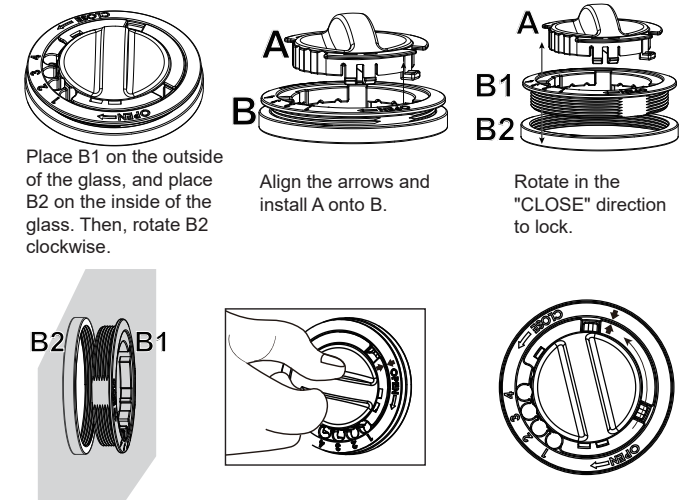
2. Install the back panel, left and right side panels, and front panel (Note: The front panel should be installed in the last slot).



3. Secure the top frame assembly.

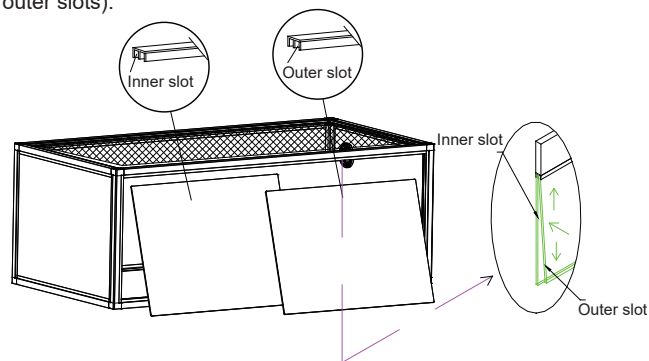


4. Install the cable pass.

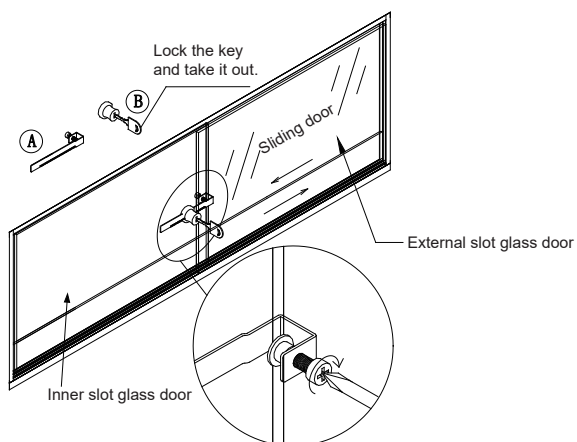


Thank you for choosing our products. To use this product properly and ensure its service life, please read this manual carefully before using.

5. Install the door glass (Note: Distinguish between the inner and outer slots).

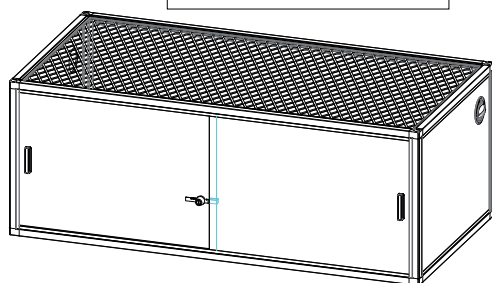
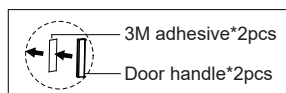


6. Install the glass lock: Attach glass lock part A to the inner slot of the glass and tighten the screw; then lock the other part, B.



7. Install door handle:

- Take a piece of 3M adhesive, peel off the protective film, and stick it to the door handle.
- Peel off the protective film from the other side and stick it to the glass.



Safety and Maintenance

1. This product is not suitable for children to play with as a toy.
2. This product is intended for indoor use only; do not install or store it outdoors.

Important Safety Information

【Warning】 Failure to follow these safety instructions may result in product damage and endanger personal safety.

【Usage】 Before using the product, please read all safety information carefully.