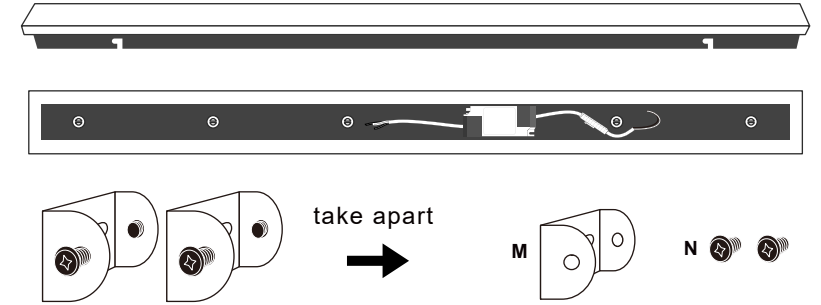
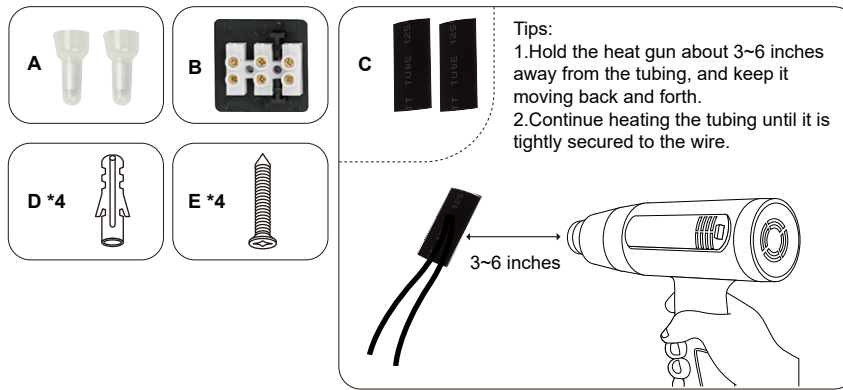


Instructions

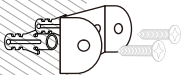
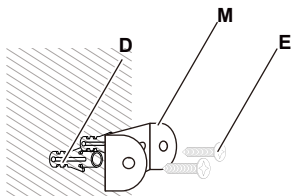
NOTE :

1. Please Check whether the accessories are missing in time after unpacking. (Bulbs not included)
2. We offer 12 months guarantee. If you find any damaged or missing parts in transit, please feel free to contact us , we will solve it as soon as possible.



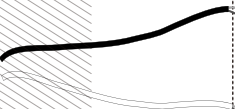
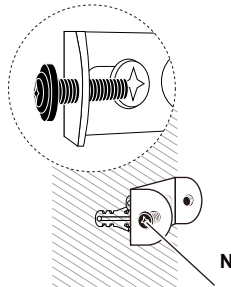
01

Screw the Mounting Bracket to the ceiling or junction box .
 (There are many gaps, you can screw it to the ceiling.)



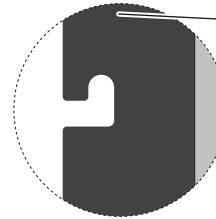
02

Tighten the screws "N"
 (No need to over-tighten it)

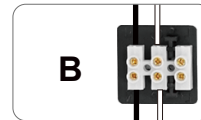
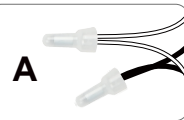


03

Fixture wires should be connected to ceiling wires by color, black wire to be attached to the black wire, white to white and ground wire to ground wire.
 (Please note the direction of the "L" shape groove as is shown in the picture.)



For your safety, you should use wire connector A or B as you like, if you choose connector A, you need to use Electric tape for it.



04

Fix the light to the wall



05

Tighten the screws "N"

