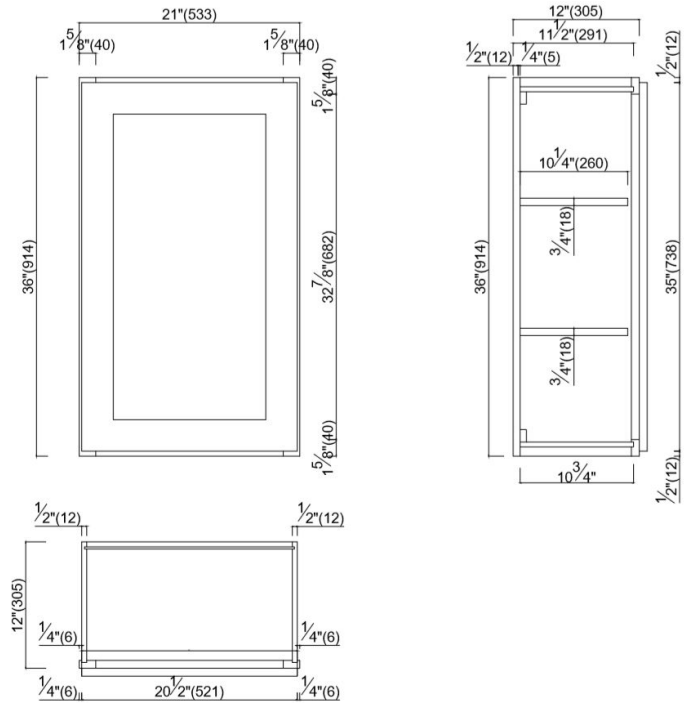


ASSEMBLED KITCHEN CABINETS

Fully Assembled Shaker Wall Kitchen Cabinet 21x36x12 White



SPECIFICATIONS

MATERIAL CONSTRUCTION:	Wood	NUMBER OF SHELVES:	2
WOOD SPECIES:	Maple	SHELF STYLE:	Wood
ASSEMBLED DIMENSIONS:	36" H x 21" L x 12" D	ADJUSTABLE SHELVES:	Yes
ASSEMBLED WEIGHT:	42.99 lbs.	SHELF ADJUSTABILITY INCREMENTS:	2.5"
KITCHEN CABINET TYPE:	Wall	SHELF DIMENSIONS:	19.75" W x 10.25" D
MOUNTING TYPE:	Wall Mount	SHELF THICKNESS:	0.75"
CONSTRUCTION TYPE:	Face Frame	SHELF MATERIAL:	Plywood; Wood
HINGE STYLE:	Soft Close	FACE FRAME MATERIAL:	HDF
DOOR STYLE:	1 Solid wood frame shaker	SIDES MATERIAL:	Plywood
NUMBER OF DRAWERS:	0	BOTTOM MATERIAL:	Plywood
DRAWER DIMENSIONS 1:	N/A	BACK PANEL MATERIAL:	Plywood
DRAWER DIMENSIONS 2:	N/A	BACK BRACE MATERIAL:	Wood
DRAWER DIMENSIONS 3:	N/A	TOE KICK INSET WIDTH:	N/A
DWR BOX MATERIAL:	N/A		
DWR CONSTRUCTION:	N/A		
DWR GLIDE:			
FAKE DWR QTY:	0		
FAKE DWR LOCATION:	N/A		

WARRANTY:	1-Year limited warranty
LEGAL FOR SALE IN CALIFORNIA:	Yes
CARB COMPLIANT:	CARB Phase 2
TSCA TITLE VI COMPLIANT:	Yes

