


uoiker

SBL-2408D

Slushie Maker User Manual







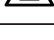
PROTECTION OF THE ENVIRONMENT - DIRECTIVE 2002/96/EC

In order to preserve our environment and protect human health, the waste electrical and electronic equipment should be disposed of in accordance with specific rules with the implication of both suppliers and users. For this reason, as indicated by the symbol  on the rating label or on the packaging, your appliance should not be disposed of as unsorted municipal waste. The user has the right to bring it to a municipal collection point performing waste recovery by means of reuse, recycling or use for other applications in accordance with the directive.


PLEASE READ ALL INSTRUCTIONS BEFORE USE
FOR HOUSEHOLD USE ONLY


IMPORTANT SAFEGUARDS

HOUSEHOLD USE ONLY.

	Read and review Instructions for operation and use.
	Indicates the presence of a hazard that can cause personal injury, death, or substantial property damage if the warning included with this symbol is ignored.
	Combustible material. May burst if heated. (Indicated by a flame symbol with white background, surrounded by a red diamond.)
	Flammable material. (Indicated by a flame symbol with yellow background, surrounded by a black triangle.)
	For indoor and household use only.

When using electrical appliances, basic safety precautions should always be followed, including the following:

 **DANGER:** Risk of fire or explosion. Flammable refrigerant used. **DO NOT** puncture refrigerant tubing. Dispose of product properly in accordance with the applicable federal or local regulations pertaining to flammable refrigerants.

 **WARNING:** To reduce the risk of injury, fire, electrical shock or property damage, basic safety precautions must always be followed, including the following numbered warnings and subsequent Instructions. **DO NOT** use appliance for other than intended use.

01. Read all instructions prior to using the appliance and its accessories.
02. Carefully observe and follow all warnings and instructions. This unit contains electrical connections and moving parts that potentially present risk to the user.
03. Take inventory of all contents to ensure you have all parts needed to properly and safely operate your appliance.
04. Turn the appliance OFF, then unplug the appliance from the outlet when not in use. Before assembling or disassembling parts, and before cleaning. To unplug, grasp the plug by the body and pull from the outlet. **NEVER** unplug by grasping and pulling the flexible cord.
05. Before use, wash all parts that may contact food. Follow washing instructions covered in this instruction manual.
06. **DO NOT** operate any appliance with a damaged cord or plug, or alter the appliance malfunctions or is dropped or damage in any manner. This appliance has no user-serviceable parts, If damaged, contact servicing.
07. This appliance has important markings on the plug. The entire supply cord is not suitable for replacement If damaged, please contact service.

08. Extension cords should **NOT** be used with this appliance.
09. To protect against the risk of electric shock. **DO NOT** submerge the appliance or allow the power cord to contact any form of liquid.
10. **DO NOT** allow the cord to hang over the edges of tables or counters The cord may become snagged end pull the appliance off the work surface.
11. **DO NOT** allow the unit or the cord to contact hot surfaces, including stoves, and other heating appliance .
12. **ALWAYS** use the appliance on a dry and level surface.
13. **DO NOT** allow children to operate this appliance or use as a toy ,Close supervision is necessary when any appliance is used near children.
14. This appliance is **NOT** intended to be used by people with reduced physical sensory, or mental capabilities, or lack of experience and knowledge. unless they have been given supervision or instruction concerning use of the appliance by a person responsible for their safety.
15. **ONLY** use attachments and accessories that are provided with the product or are recommended by our company, The use of attachments not recommended or sold by our company may cause fire, electric shock, or injury.
16. Keep hands, hair, and clothing out of the container when loading ,and operating.
17. During operation and handling of the appliance, avoid contact with moving part.
18. **ALWAYS** keep ventilation openings, in the appliance enclosure or in the built-in structure, clear of obstruction.
19. **DO NOT** use mechanical devices or other means to accelerate the defrosting process, other than those recommended by the manufacturer.
20. **DO NOT** damage the refrigerant circuit This warning is only applicable for appliances with refrigerating circuits which are accessible by the user.
21. **DO NOT** use electrical appliances inside the food storage compartments of the appliance, unless they are of the type recommended by the manufacturer.
22. **DO NOT** add frozen fruit, frozen vegetables, or ice to the unit.
23. **DO NOT** add hot ingredients to the unit.
24. **DO NOT** submerge the motor base or control panel in water or other liquids.
25. **DO NOT** fill vessel past the MAX FILL line.
26. **NEVER** leave the appliance unattended while in use.
27. Before operation, ensure all utensils are removed from containers. Failure to remove utensils can cause containers to shatter and potentially result in personal injury and property damage.
28. **DO NOT** carry the unit by the bail handle. Hold the unit by grasping both sides of the unit under the motor base.

29. **DO NOT** process hard, loose ingredients or ice. This appliance is not intended to process loose frozen fruit, a block of solid ice. or ice cubes.

30. **ALWAYS** keep the unit upright.

31. After unboxing the unit for the first time, ensure the unit is upright for at least 2 hours before operating to let the refrigerant oils settle in the air conditioning system for best performance.

32. This appliance is not intended for use by persons (including children) with reduced physical, sensory or mental capabilities, or lack of experience and knowledge, unless they have been given supervision or instruction concerning use of the appliance by a person responsible for their safety, Children should be supervised to ensure that they do not play with the appliance.

33. The supply cord cannot be replaced. if the cord is damaged the appliance should be scrapped.

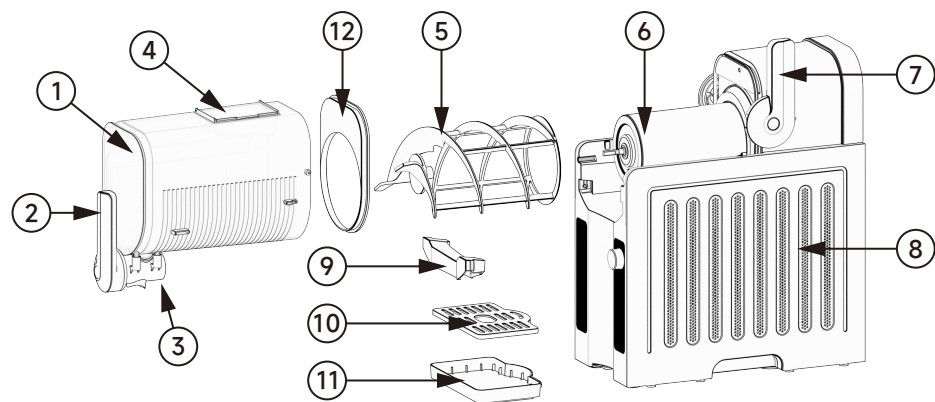
34. Keep rear and sides of the unit open in order for the compressor to operate properly and not over heat.

35. when using appliance, make sure both sides and back of it are at least four inches away from walls.

36. Children should be supervised to ensure that they do not play with the appliance.

37. If the supply cord is damaged, it must be replaced by the manufacturer, its service agent or similarly qualified persons in order or avoid a hazard.

PARTS



- 1.Vessel 2.Handle 3.Discharge hole 4.Charge door 5.Auger
6.Evaporator 7.Bail handle 8.Main body 9.Condensation water baffle
10.Mesh 11.Drip tray 12. Vessel lid

BEFORE FIRST USE

IMPORTANT: Review all warnings at the beginning of this Owner's Guide before proceeding.

1. Remove all packaging materials from the unit.
2. Wash all parts in warm, soapy water.
3. Thoroughly rinse and air-dry all parts.
4. Wipe control panel, motor base, and evaporator with a soft cloth .Allow to dry completely before using.
5. Place the unit on counter top for at least 2 hours before operating. This allows the refrigerant to settle in the condenser for optimal and safe use.

NOTE: All attachments are BPA free. Accessories are dishwasher safe but should **NOT** be cleaned with a heated dry cycle.

USING THE CONTROL PANEL

1. Digital Screen

2. Temperature Level Display

3. 6 Presets Menu

4. Control Knob:

- Turn clockwise or counterclockwise to Adjust the menu or the temperature.
- Start/Pause : Press to start or pause the Slushie Maker operation.
- Press and hold for 3 seconds to enter standby - mode.

5. Menu Button

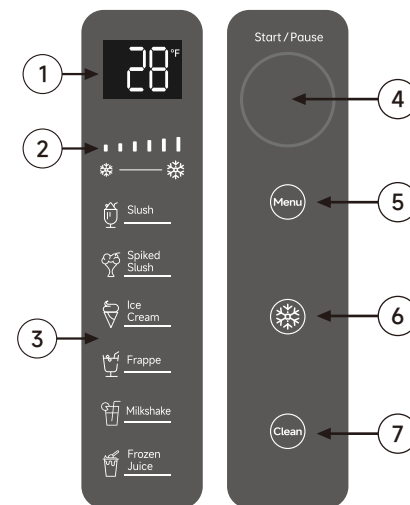
6. Temperature Level Setting Button

NOTE: The temperature can only be adjusted in the working - state.

- Each preset will start at a default/optimal temperature for ideal texture. If desired, adjust the temperature for your perfect frozen drink texture.
- For sippable frozen drinks, decrease the temperature level by turn counterclockwise to Control Knob.
- For thicker, colder frozen drinks, increase the temperature level by turn clockwise to Control Knob.

Attention: the temperature control setting only enter the program can setting; The temperature setting can be increased by one lamp display, and can be reduced to only one lamp display, with each lamp display representing about 1°C (about 1.8°F).

7. Clean Button



PRESETS

Each preset will start at a default/optimal temperature for ideal texture. If desired, adjust the temperature for your perfect frozen drink texture.

Menu	Default/Optimal Temperature	Temperature Level	Adjust The temperature Level Range
Slush	28°F/ -2°C	■■■■■	1-6
Spiked Slush	19°F/ -7°C	■■■■■	1-6
Ice Cream	21°F/ -6°C	■■■■■	1-6
Frappe	25°F/ -4°C	■■■■■	1-6
Milkshake	27°F/ -3°C	■■■■■	1-6
Frozen Juice	43°F/ 6°C	■■■■■	1-6

REQUIRED SUGAR CONTENT

- Too little sugar or too much alcohol will prevent freezing of a slush output Follow guidelines below for a perfect every time.
- **All inputs must contain at least 4% sugar.**

NOTE: Pre-frozen ingredients taste sweeter. Worried your drink might be too sweet? Don't worry, it won't taste as sweet after you freeze and slush it into a frozen drink.

SUGAR GUIDELINES

Refer to drink/liquid nutrition label to ensure sugar content meets the recommended minimums below:

Serving Size	Minimum Total Sugar Amount
17 oz (0.5L)	20g
54 oz (1.6L)	65g

NOTE: Sugar-free substitutes or artificial sweeteners will not aid in meeting total minimum or maximum sugar requirements.

HARD ALCOHOL/SPIRIT GUIDELINES

The perfect balance for your favorite frozen cocktails at home. When using the Spiked Slush preset, all premade inputs (wine, beer, etc.) **must between 2.8% and 16% alcohol.**

Total Recipe Size	Maximum Alcohol Amount
3 cups (24 oz)	1/2 cup (4 oz)
4 1/2 cups (36 oz)	3/4 cups (6 oz)
6 cups (48 oz)	1 cups (8 oz)

NOTE: Chart above is a guide for incorporating hard alcohol/spirits (35%+) ONLY.

TIPS & TRICKS

01. **Keep unit upright for at least 2 hours before first use.**
02. **DO NOT** add hot ingredients.
03. **DO NOT** add ice or solid ingredients like fruit, ice cream, or frozen fruit.
04. Pre-frozen ingredients taste sweeter. Worried your drink might be too sweet? Don't worry, it won't taste as sweet after you freeze and slush it into a frozen drink.
05. All in puts must include at least 4% sugar.
06. When using the Spiked Slush preset, all premade inputs must contain between 2.8% and 16% alcohol.
07. For best results, chill liquid(s) or blended ingredients before adding to the unit.
08. For the frostiest results, chill serving glasses before dispensing your frozen drink.
09. For your ideal frozen drink texture, use the temperature control setting to adjust.
10. When using the Milkshake or Frappe preset, dispense contents within 30 minutes of the preset ending to avoid a foamy output.
11. For the best dispensing experience, fill the unit to the max-fill line (1.6L / 54oz).
12. The unit can run up to 12 hours.
13. All parts except the motor base, including the evaporator, are dishwasher safe but should **NOT** be cleaned with a heated dry cycle.
14. **Minimum input = 17oz(approx. 0.5L) Maximum input = 54oz(approx. 1.6L)**

This is NOT a blender.

DO NOT process a solid block of ice or ice cubes.

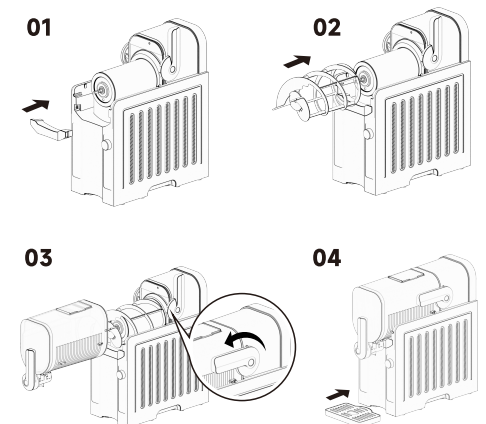
DO NOT make a smoothie or process hard, loose ingredients

DO NOT attempt to blend or macerate non-liquid ingredients.

Overall Assembly Instructions

IMPORTANT: Review all warnings at the beginning of this Owner's Guide before proceeding. Ensure all parts are fully cleaned and the motor is level on a flat solid surface.

01. Install the condensation water baffle under the evaporator by sliding it into the rail grooves.
02. Install the auger by sliding it over the evaporator and rotating until it fits into place onto the pin.
03. With the handle up, slide the vessel over the installed auger and evaporator. Lock the vessel in place by pushing the bail handle front to seal the vessel.
04. Insert the drip tray (have a mesh inside) in front of the motor base until it clicks in place.

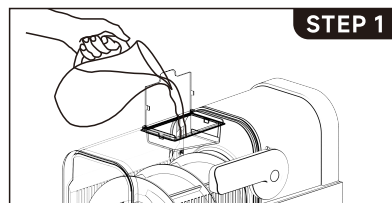


Using Your Slushie Maker

NOTE: Make sure the unit has been sitting upright on the counter top for at least 2 hours before first use, so the refrigerant can settle in the condenser for optimal and safe use.

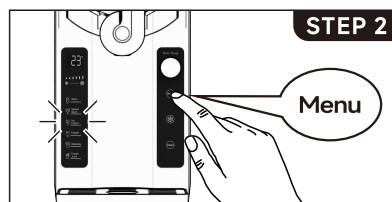
STEP 1

- Plug the unit in.
- Open the cover on the top of the vessel.
- Add liquid(s) and/or blended ingredients through the charge door and close the cover.



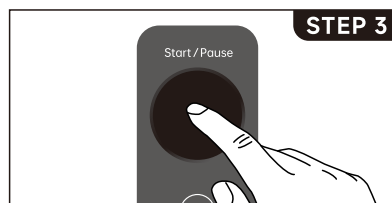
STEP 2

- Press the "Menu" button, turn the knob to choose your desired preset. (The default menu is Slush)



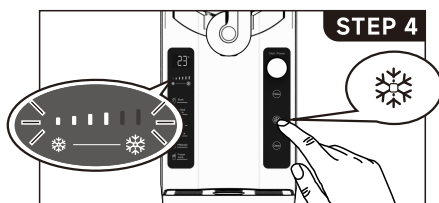
STEP 3

- Press the knob to start making.



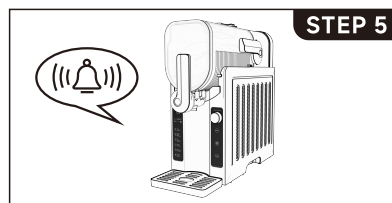
STEP 4

- If desired, adjust the temperature for your perfect frozen drink texture.
- In the operation mode of the Slushie Maker, Press the "Temperature" button, Turn the knob to select the desired temperature setting.



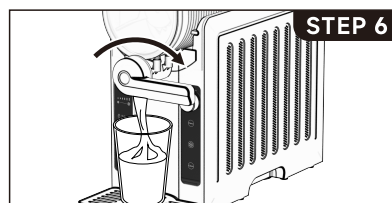
STEP 5

- Once frozen drink reaches the desired temperature, the Slushie Maker will beep, Unit will Continue running to keep your frozen drink at the ideal temperature and be ready to dispense.
- Creating drinks can take up to 15-60 minutes depending on ingredients. volume, and starting temperature.



STEP 6

- Place a cup on the drip tray, under the handle.
- To dispense, clockwise turn the handle 90 degrees to the right, When the ingredients are done, rotate counterclockwise the handle to close the discharge hole.
- Enjoy your latest frozen drink creation.
- The unit can run up to 12 hours.



NOTE: DO NOT turn off preset until all frozen drink has been dispensed.

Recipe Guide

- **Must be** all the ingredients after thorough stirring, pour it into the vessel.
- Each menu has preset will start at the default/optimal temperature for ideal texture. If desired, adjust temperature.

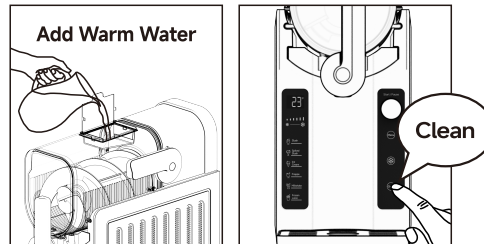
Category	Servings	Reference Ingredients	Mode selection
ONE-INGREDIENT SODA SLUSH	6~8	Soda options include Cola, orange, lemon-lime, cream, root beer, ginger ale, grape, or any generic soda: 54 oz	Select the "Slush" preset
MARGARITA SLUSH	4~5	Tequila: 3 cups Lime juice: 2 cups Triple sec: 1 cup Simple syrup: 1/2 cup	Select the "Spiked Slush" preset
MAI TAI SLUSH	4~5	Light rum: 2 cups Orange curaçao: 1 cup Orgeat syrup (almond-flavored): 1 cup Lime juice: 1/2 cup Simple syrup: 1/2 cup	Select the "Spiked Slush" preset
MILK SOFT ICE CREAM	4~5	Light cream: 20 oz Whole milk: 10 oz Sugar: 100 g	Select the "Ice Cream" preset
VANILLA ICE CREAM	4~5	Light cream: 20 oz Whole milk: 10 oz Sugar: 100g Pure vanilla extract: 0.5 oz	Select the "Ice Cream" preset
CHOCOLATE ICE CREAM	4~5	Light cream: 20 oz Whole milk: 10 oz Sugar: 100 g Semi-sweet chocolate chips: 120 g (Melt them into liquid)	Select the "Ice Cream" preset
BANANA CARAMEL FRAPPÉ	4~5	Half & half: 1 1/2 cups Black coffee: 2 1/2 cups Banana, mashed: 1 Caramel sauce: 1/2 cup	Select the "Frappe" preset
ARABIC SYRUP MILKSHAKE	4~5	Light cream: 28 oz Heavy cream: 5.6 oz Arabic syrup: 1.4 oz Pure vanilla extract: 0.7oz	Select the "Milkshake" preset
CHOCOLATE MILKSHAKE	2~4	Whole Milk: 2 cups Heavy Cream: 1 cups Vanilla Extract: 1 tablespoon Granulated Sugar: 2 tablespoons Chocolate Syrup: 1/4 cup Cocoa Powder: 2 tablespoons	Select the "Milkshake" preset
CHILLED JUICE	6~8	Cranberry juice, orange juice, mango juice, watermelon juice, tropical juice : 54oz	Select the "Frozen Juice" preset

CARE & MAINTENANCE

USING THE CLEAN FUNCTION

NOTE: Liquids from rinsing will dispense quickly from vessel pour spout. Ensure you use a large cup or bowl to capture this liquid.

1. Dispense any remaining frozen drink.
2. Add warm water(not exceed 140°F/60°C) up to the vessel's max fill line (54oz/1.6L).
3. Stop the current preset. Press the “Clean” button.
4. After the cleaning function is completed, it will automatically stop and enter the standby mode.
5. Slowly dispense the water from the unit immediately.



NOTE: If needed. repeat until frozen drink is rinsed off the evaporator.

After using the Clean function, wash all parts by hand or in a dishwasher to fully clean the unit after each use.

DISASSEMBLY & CLEANING

For best results, use the CLEAN function before disassembling and cleaning all parts.

1. Unlock the bail handle by pulling backward and remove the vessel by gently pulling it off the unit. Ensure the vessel is tipped downward to prevent remaining liquid from spilling out the back of the vessel. Set aside.
2. Slide the auger off the evaporator. Set aside.
3. Wipe down the evaporator with a sanitized or warm, damp cloth.
4. Gently slide the Condensation water baffle out of the unit. Set aside.
5. Wipe down unit underneath the evaporator with a sanitized or warm, damp cloth.
6. If needed, you can gently pull the cleaning spring in the water leakage hole below the evaporator a few times to prevent the leakage hole from getting blocked. If necessary, pull out the cleaning spring and pull it up from the bottom drainage outlet a few times to clear the blockage in the bottom hole. **NOTE:** Drip tray cover can be removed for easy cleaning.
7. Hand-wash all parts in warm soapy water, or use a dishwasher. If needed, repeat until all parts are fully clean **NOTE:** All parts, except the motor base and evaporator, are bottom-rack dishwasher safe. and should **NOT** be cleaned with a heated dry cycle.
8. Wipe down the motor base with a sanitized or warm, damp cloth.
9. Allow all parts to dry thoroughly before reassembling and/or storing the unit.

STORING

Store the unit upright and store all parts assembled. When moving the unit, lift from the bottom of the motor base, Keep in a dry, ventilated place out of reach of children.

DO NOT store ingredients inside the vessel.

RESETTING THE MOTOR

This unit features a unique safety system that prevents damage to the motor and drive system should you inadvertently overload it. If the unit is overloaded, the motor will be temporarily disabled. Should this occur, follow the reset procedure below.

1. Unplug the unit from the electrical outlet.
2. Allow the unit to cool for approximately 15 minutes.
3. Remove all parts and accessories. Ensure no ingredients are jamming the auger.

IMPORTANT: Ensure that maximum capacity is not exceeded This is the most typical cause of appliance overload.

DO NOT process a solid block of ice or ice cubes. **DO NOT** make a smoothie or process hard, loose ingredients. If your unit needs servicing, please call Customer Service .

TROUBLESHOOTING TIPS

RECIPE NOT SLUSHING?

If your recipe has not reached desired texture after 60 minutes, increase the temperature by one level. Wait 10-15 minutes to test recipe texture.

SLUSH NOT DISPENSING?

For the best dispensing experience. fill the unit to the max fill line and ensure the unit is running. For a smoother dispense experience, decrease the temperature level by turn counterclockwise to Control Knob.. More sippable frozen drinks will dispense smoother.

If the display displays an exception code, the meaning is as follows:

E0: The safety switch is not closed (can reassembly the vessel or need a professional to open the rear cover for repair).

E1: The temperature probe is disconnected due to poor contact (Need a professional to open the rear cover for repair).

E2: Temperature probe short circuit.(Need a professional to open the rear cover for repair)

Technical specification

Voltage: 120V~

Frequency: 60Hz

Power: 200W