

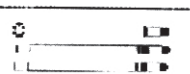
# INSTRUCTION



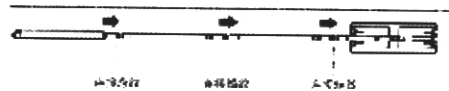
## MOP ROD AND MOP CLOTH INSTALLATION

1. TAKE OUT THREE MOPS (P1)
2. ASSEMBLE THE MOP ROD AND CLOTH (P2)
3. PLACE THE FLAT MOP ON THE FLOOR AND TURN TO A VERTICAL POSITION (P3)
4. PUT THE MOP TO THE FLAT MOP (P4)
5. MAKE SURE THEY ARE FIXED (P5)

P1:



P2:



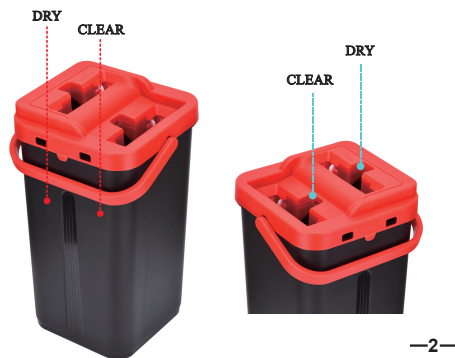
P3:



P4:

P5:

## STRUCTURE



-1-

-2-

## INSTRUCTION 1

1. PLEASE NOTE WATER COULDN'T OVER MAX LINE, OR WILL LEAD TO DISCHARGE SEWAGE (P1)
2. PUT THE ASSEMBLED MOP INTO THE CLEANING AREA AND MOVE IT UP AND DOWN TO CLEAN IT (P2 . P3)

(1)



CLEAR

(2)



CLEAR ARE

-3-

## INSTRUCTION 2

1. PUT THE CLEANED MOP INTO THE DRY AREA AND MOVE UP AND DOWN TO DRY THE WATER P1 . P2
2. TAKE OUT IT THEN USE

DRY



DRY ARE

(3)

-5-

## DISASSEMBLY

1. MOVE THE TOP SIDE
2. THEN DO THE CLEANING

1



2



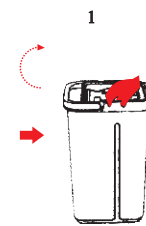
MARK:  
WASH AREA NEED  
MATCH WITH THE LOWER  
SIDE WHEN INSTALL

-4-

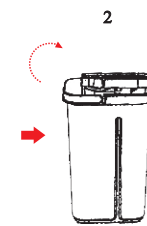
## INSTRUCTION 3

1. OPEN THE PYLON FROM THE SIDE TO SEPARATE THE PYLON FROM THE BARREL BODY AND FACILITATE THE CLEANING OF THE BARREL BODY.
2. DRAIN SEWAGE FROM BARRELS

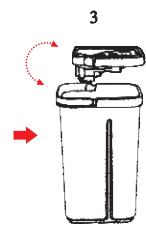
1



2



3



-6-