


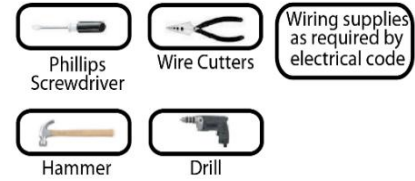
# LED VANITY LIGHT





INSTRUCTIONS PERTAINING TO RISK OF FIRE OR INJURY TO PERSONS  
READ ALL INSTRUCTIONS  
**IMPORTANT SAFETY INSTRUCTIONS**  
SAVE THESE INSTRUCTIONS

## TOOLS AND MATERIALS REQUIRED:

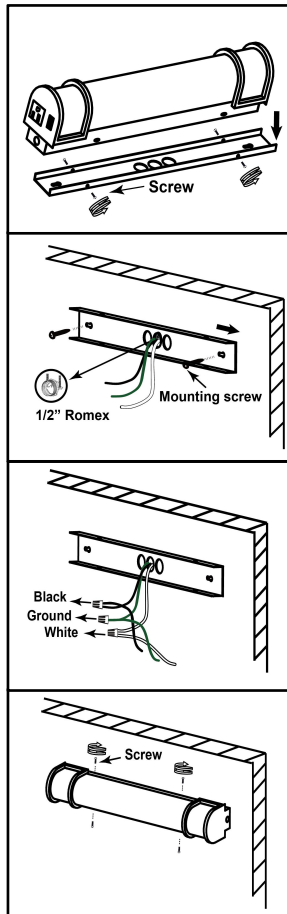
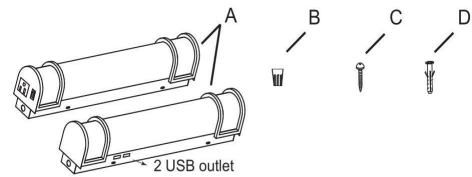


### SAFETY PRECAUTIONS:

1. TURN OFF ELECTRICAL POWER BEFORE STARTING INSTALLATION OF LIGHT FIXTURE.
2. THIS PRODUCT MUST BE INSTALLED IN ACCORDANCE WITH THE APPLICABLE INSTALLATION CODE BY A CERTIFIED ELECTRICIAN FAMILIAR WITH LOCAL MUNICIPAL CODES AND REQUIREMENTS.
3. CAUTION-RISK OF ELECTRIC SHOCK. CONSULT A QUALIFIED ELECTRICIAN TO ENSURE CORRECT BRANCH CIRCUIT CONDUCTOR.

### PACKAGE CONTENTS

PART	DESCRIPTION	QTY
A	LED light	1
B	Wire nut	3
C	Mounting screw	2
D	Screw anchor	2



1. Remove 4 side screws on the housing to release metal cover.

2. Open one blind knockout on the cover in your required position and install the Romex connector (1/2" (not included)). Position the metal cover on your desired location. Pull the supply wires through the Romex connector. Fasten the mounting screws on the metal cover in your desired location. (Use screw anchors on drywall).

3. Connect supply wires to wires on fixture with wire nuts. Connect white to white, black to black, green or bare copper wire to green wire.

4. Complete the installation by mounting the fixture body with the screws on both sides.

Note: If you need to charge your mobile phone, please connect it with your own USB cable and insert it into a USB outlet (DC5V, 3A).