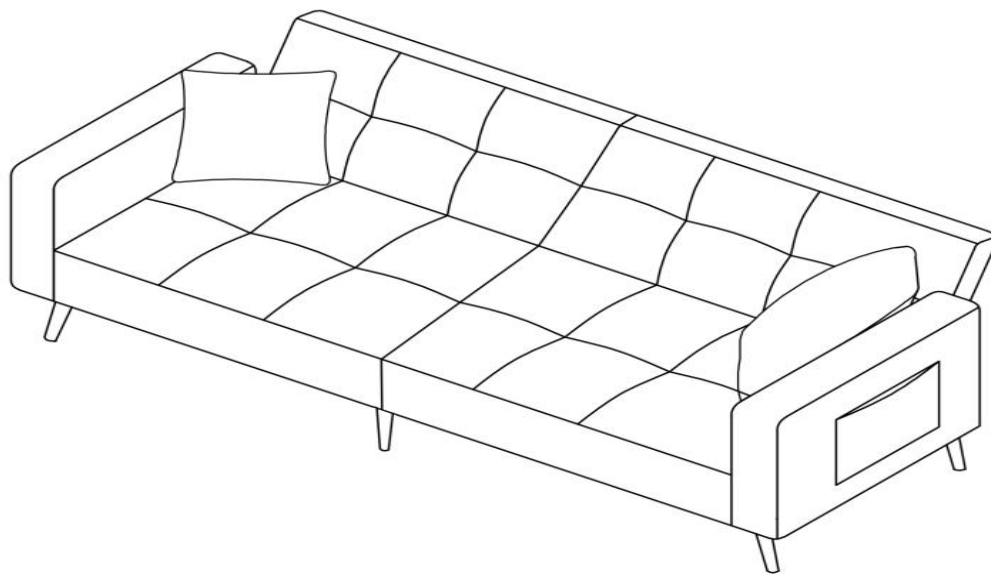


ASSEMBLY INSTRUCTIONS



Some parts are under the seat, please read the instructions carefully when you receive the goods and remove the installation parts. Please do not return the goods at will, if in doubt contact the supplier.



[EN]

Warning: Please read instructions fully before starting assembly. Check you have all the components and tools listed on pages.

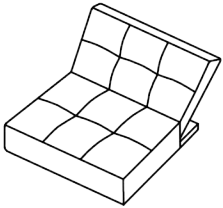
Warning: Regularly check all fittings and fastenings to ensure they are secure and to prevent accidents

Warning: Do not place furniture close to fire sources or high-temperature objects to avoid the risk of fire.

Warning: Do not allow children to climb on the furniture as this may result in tipping and serious personal injury. Assemble the furniture away from the reach of children.

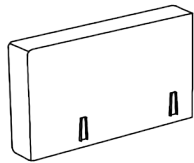
PARTS LIST

A X 1



Left Seater

C X 1



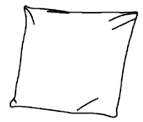
Left Arm

H X 1



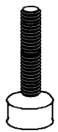
Allen Key

E X 1



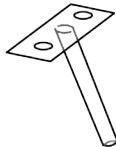
Pillow

G X 12



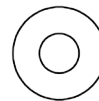
Screws

F X 2



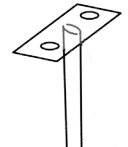
Legs

I X 12



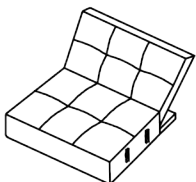
Gasket

J X 1



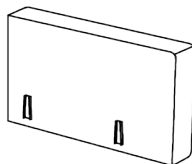
Legs

B X 1



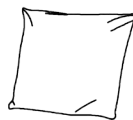
Right Seater

D X 1



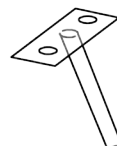
Right Arm

E X 1



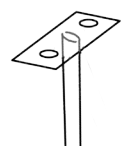
Pillow

F X 2



Legs

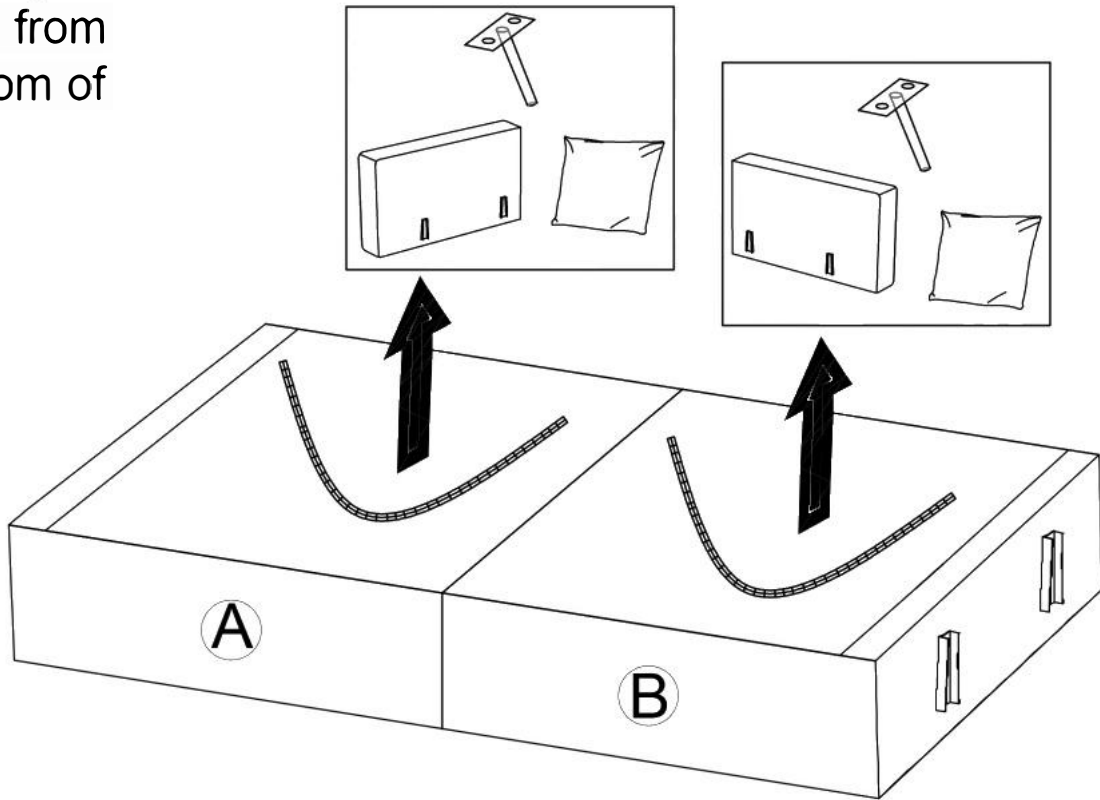
J X 1



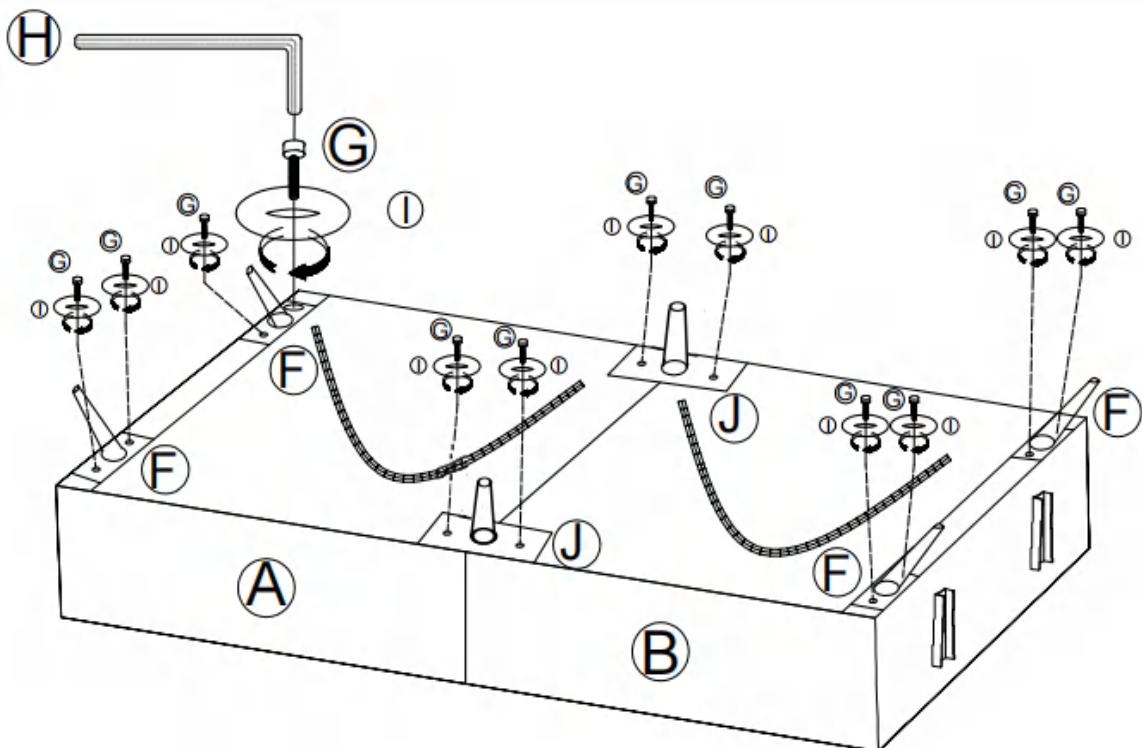
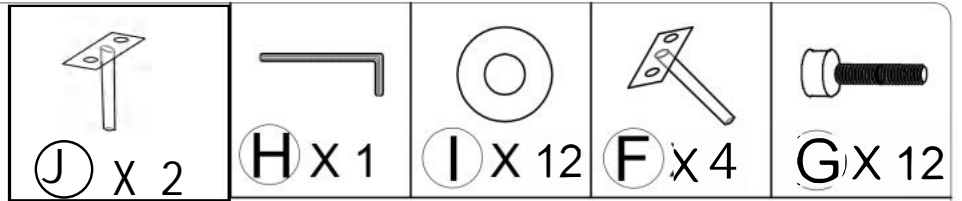
Legs

Step1

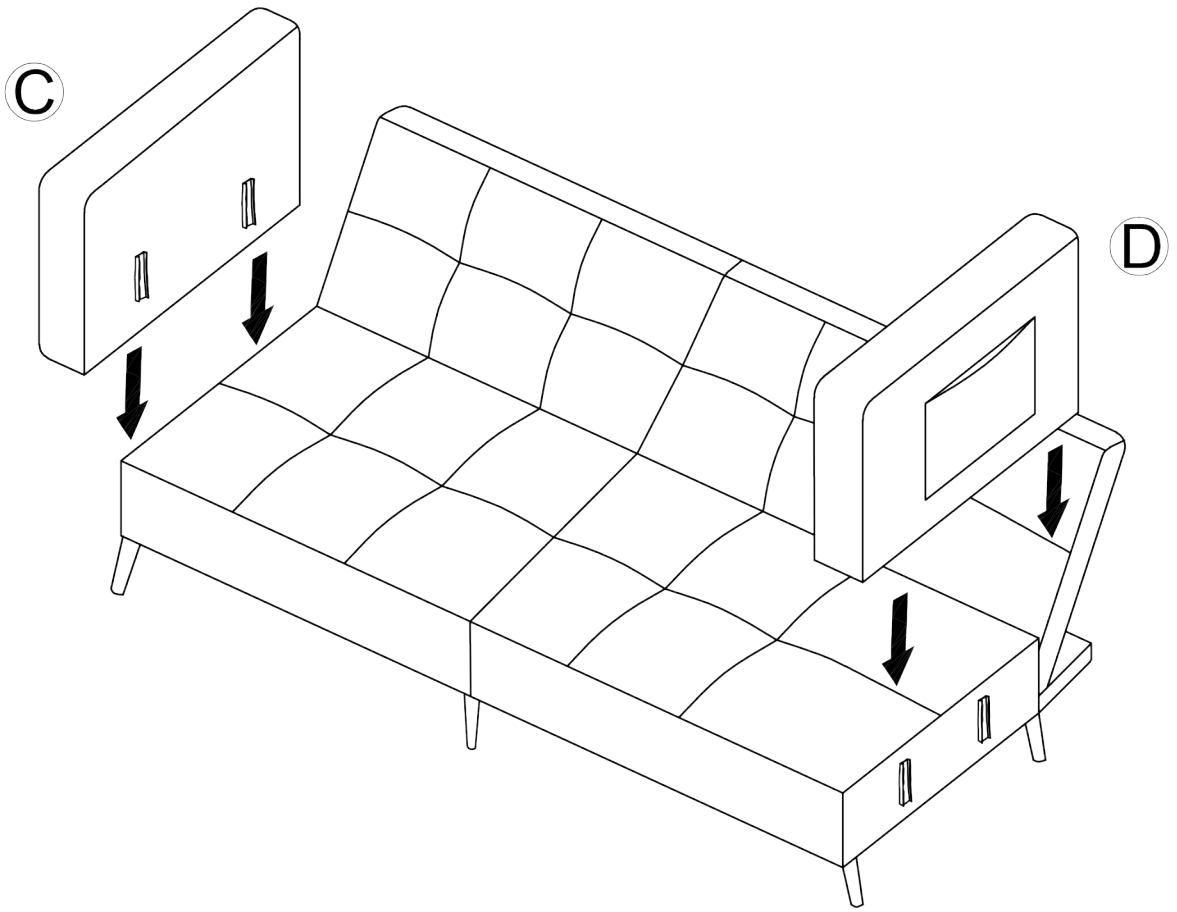
Take out part C,D,E,F from the bottom of sofa.



Step2



Step3



Step4

