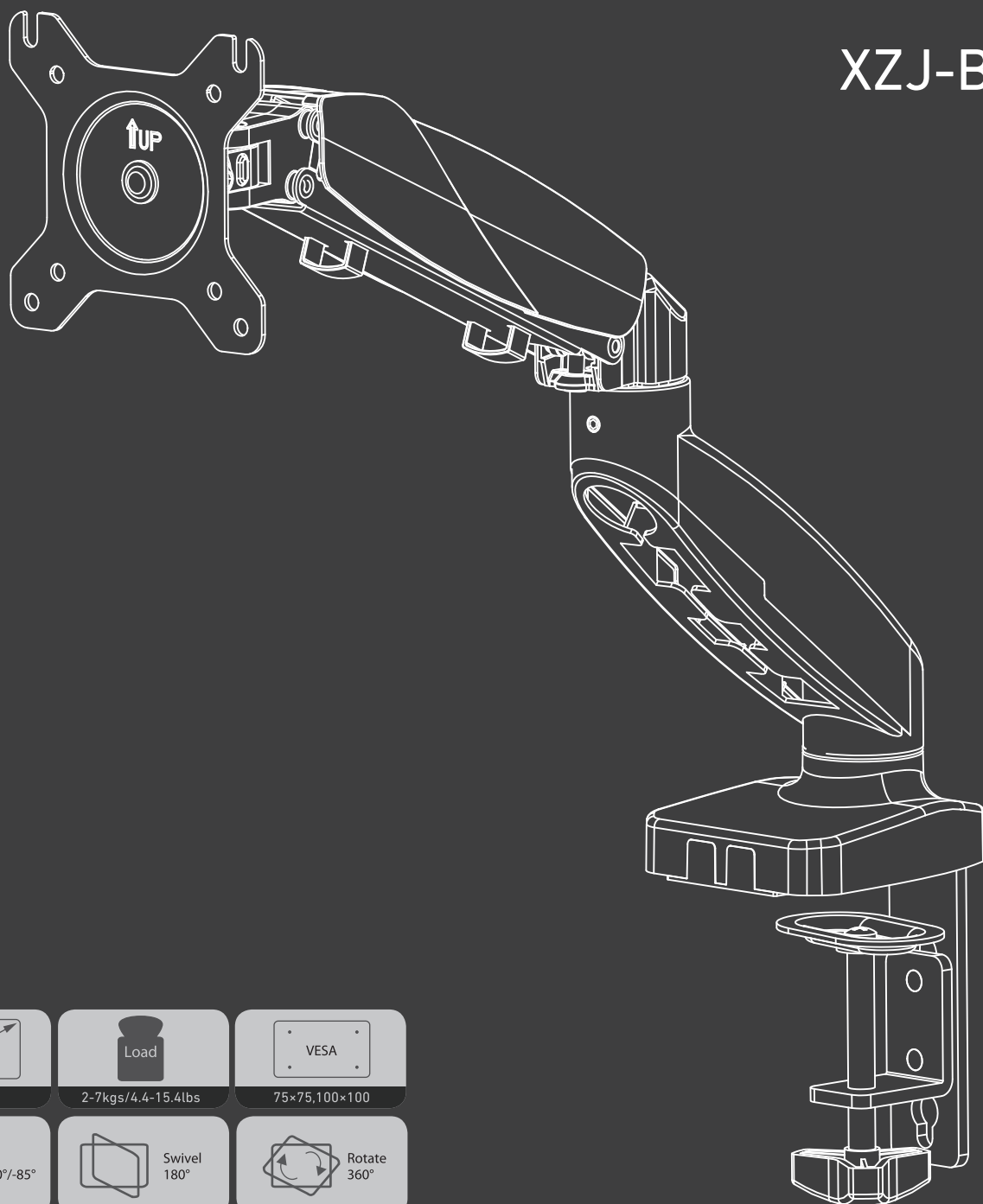


Single-Arm Monitor Stand Instruction Manual

XZJ-B1-BK

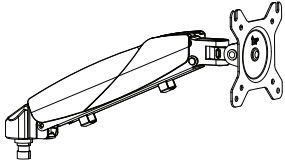


EST 9:00AM--17:00PM

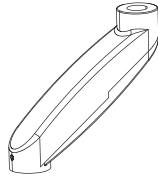
HJ-Customer-Service@outlook.com

(909)637-7665 | (909)637-7593

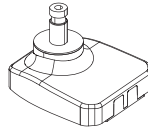
Package List



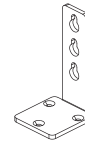
(A)*1 Upper Arm



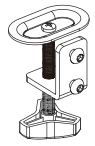
(B)*1 Lower Arm



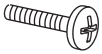
(C)*1 Base



(D)*1 "L" Clamp Plate



(E)*1 Clamp



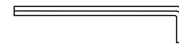
①*4 Screw
M4x12



②*4 Screw
M4x30



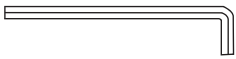
③*4 Gasket
12x5.8x16



④*1 Wrench 3mm



⑤*1 Wrench 4mm



⑥*1 Wrench 5mm



⑦*3 Screw
M6x12

Warning



Prior to the installation of this product, the installation instruction must be read and completely understood. Failure to do so may result in personal injury, property damage or voiding of factory warranty.



Do not install on a structure that is prone to vibration, movement or chance of impact. Reinforce the structure as required before installation.



The desk clamp can support a maximum thickness of 3.93". Confirm the desk edge before installation.



Pay attention to the weight capacity of the mount. Exceeding the limitation can result in function unworkable or even serious personal injury and property damage.

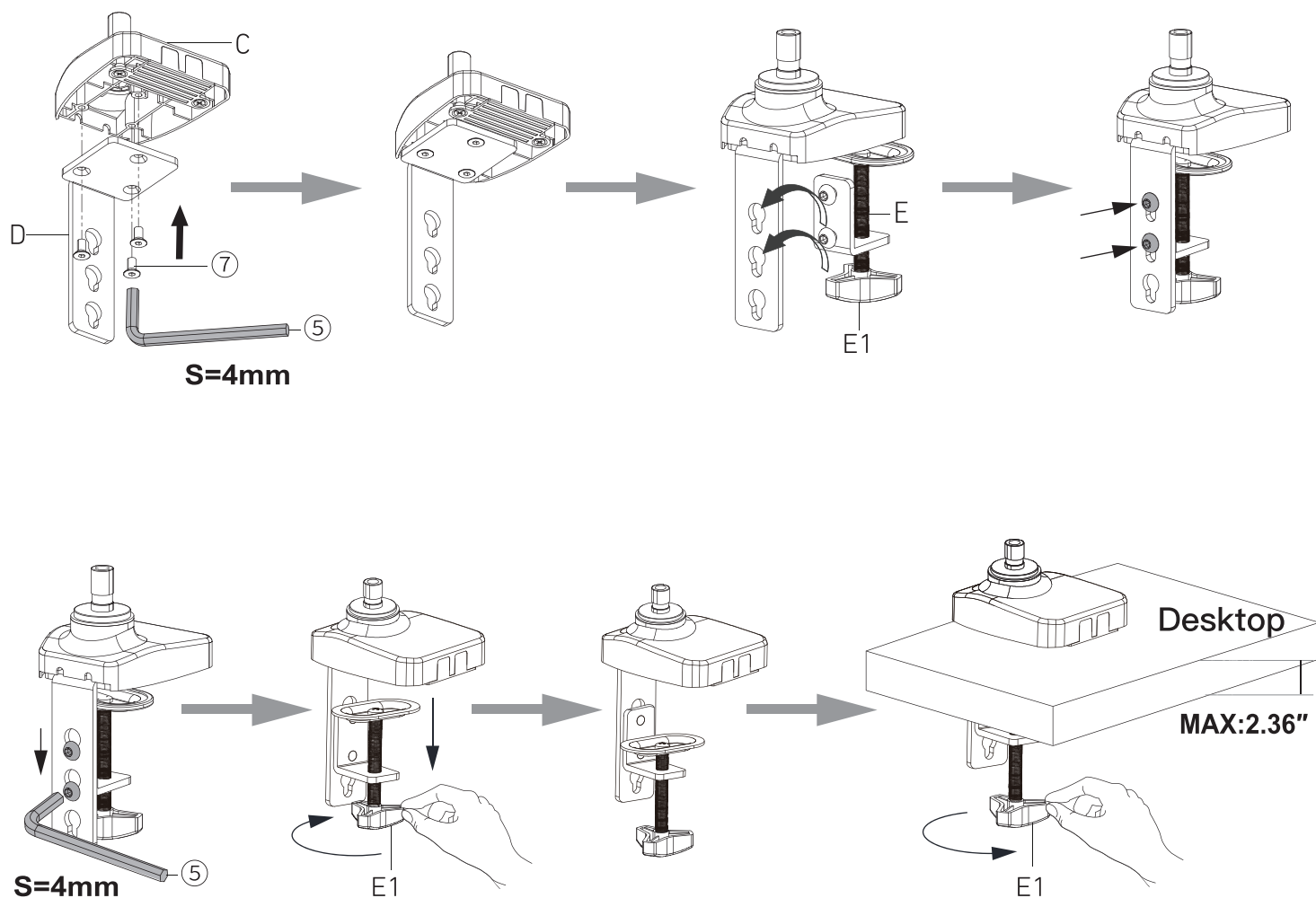


Never operate the mount if parts are missing or damaged. Contact your local service center for warranty service.

MAINTENANCE: Check that the bracket is secure and safe to use at regular intervals (at least every three months).

Step 1-1

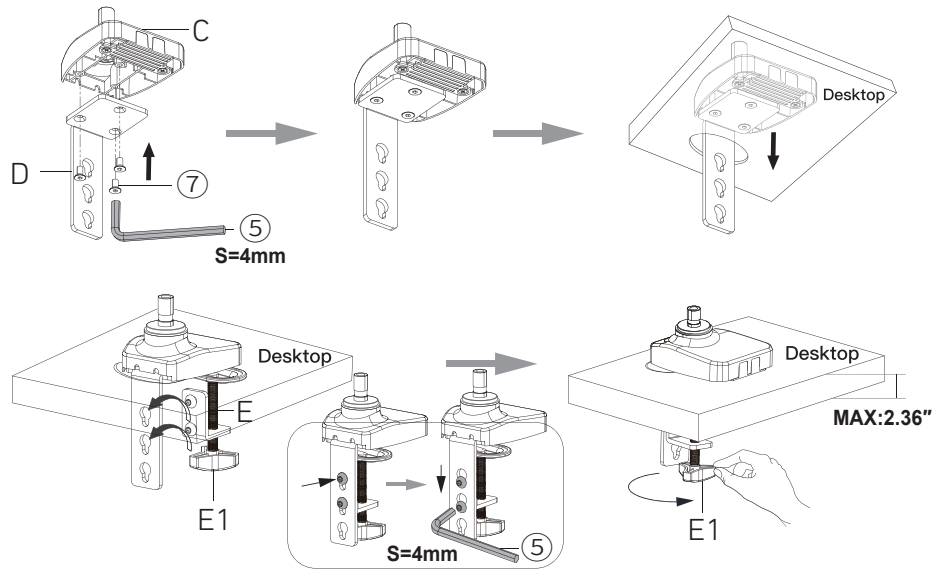
Desk Clamp Installation



Connect the “L” Clamp Plate D and Base C with a Screws ⑦*3 and Wrench ⑤; then connect the screws on the back of the Clamp E with the “L” Clamp Plate D and tighten it with Wrench ⑤. Turn E1 to adjust the height and fix the clamp on the table.

Step 1-2

Grommet Installation

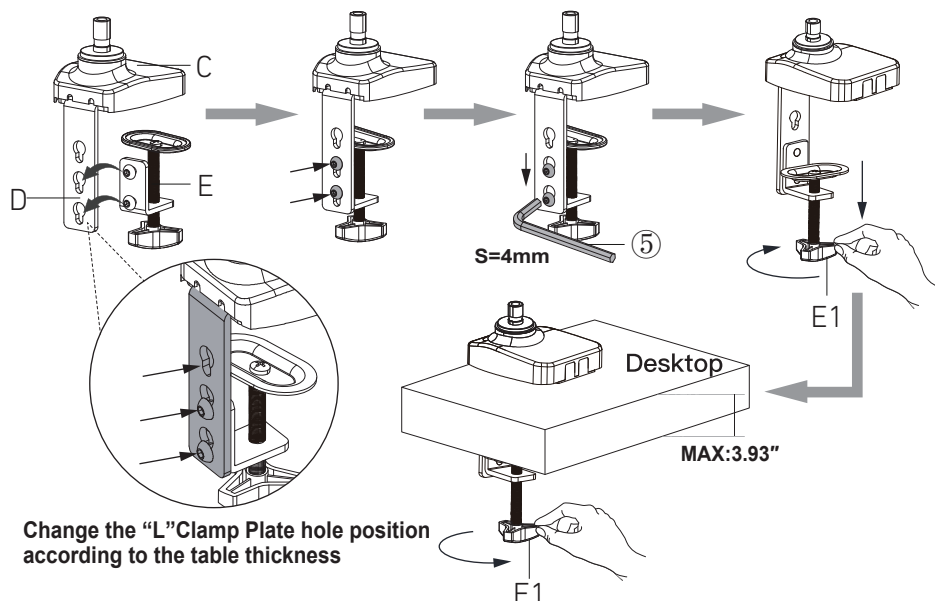


Connect the "L" Clamp Plate D and Base C with Screws ⑦*3 and Wrench ⑤ and tighten them. Pass them through the table holes, then connect the screws on the back of the Clamp E with the "L" Clamp Plate D and tighten them with Wrench ⑤. Turn E1 and tighten it with the tabletop.

NOTE:

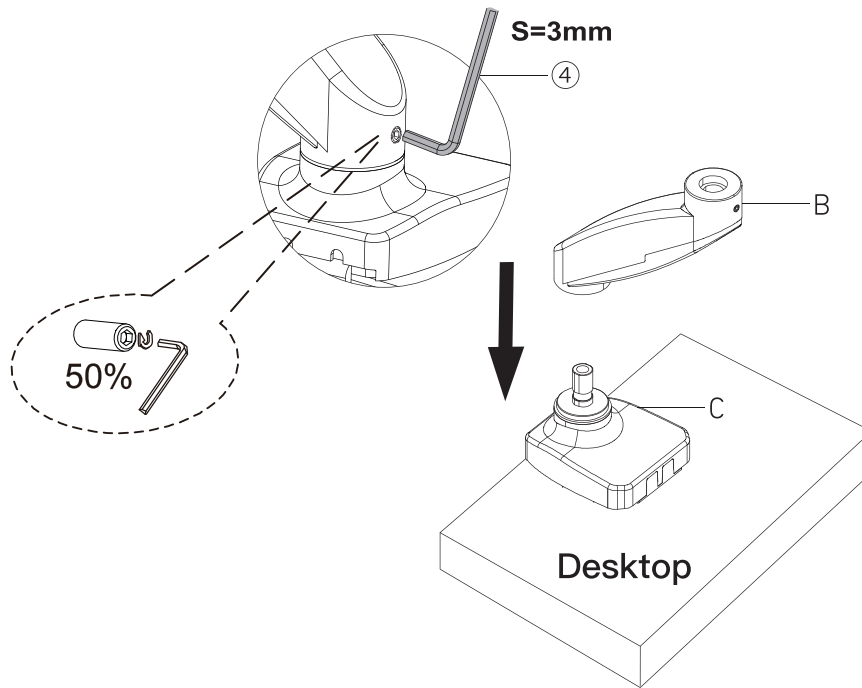
If your desk has an existing table hole, please install directly. If there is no grommet, mark the mounting surface and drill a hole in it with an electric drill (1.57"-2.36").

Step 1-3



Change the "L" Clamp Plate default holes if desktop is between 2.36"-3.93".

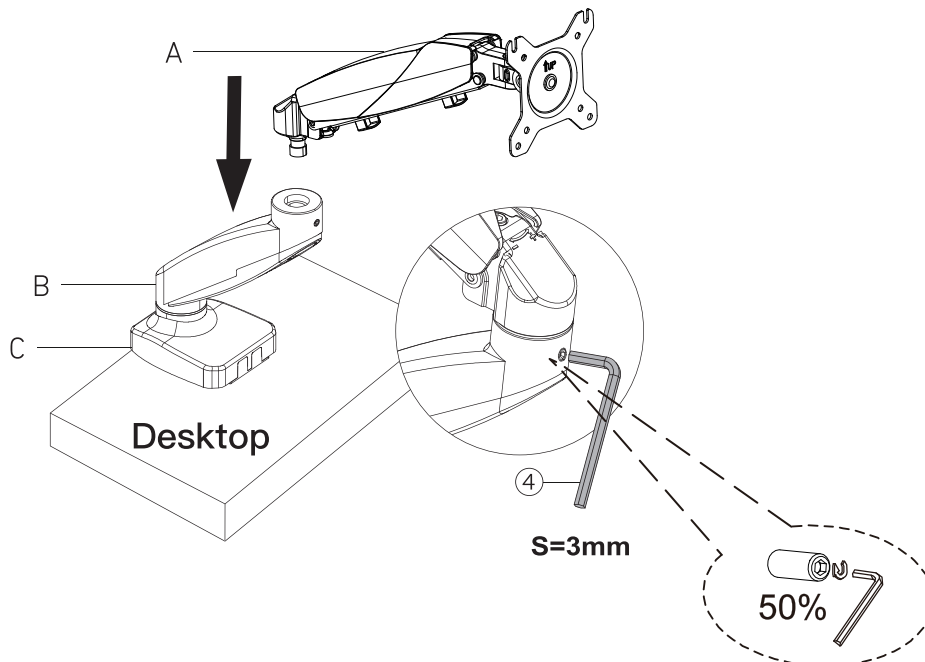
Step 2



Connect the Lower arm B to Base C and tighten 50% with a Wrench ④.

NOTE: The screw is 50% tightened, the Lower Arm can be rotated, the screw is screwed 100% and the Lower Arm is fixed.

Step 3

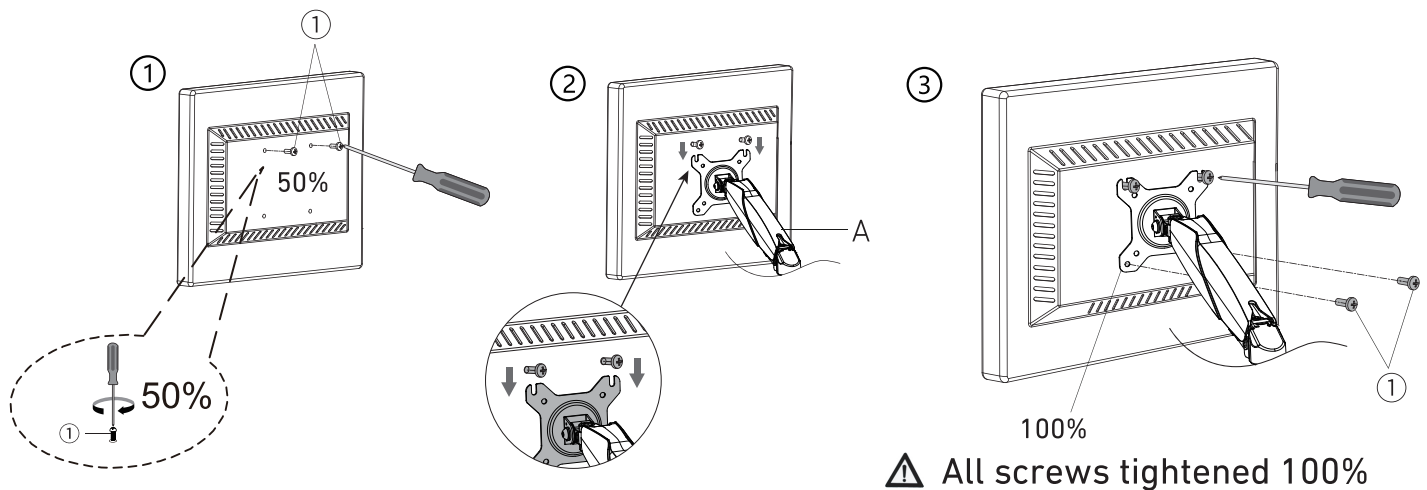


Connect the Upper Arm A to the Lower Arm B and tighten 50% using Wrench ④.

NOTE: The screw is 50% tightened, the Upper Arm can be rotated, the screw is screwed 100% and the Upper Arm is fixed.

Step 4-1

Flush Surface Installation

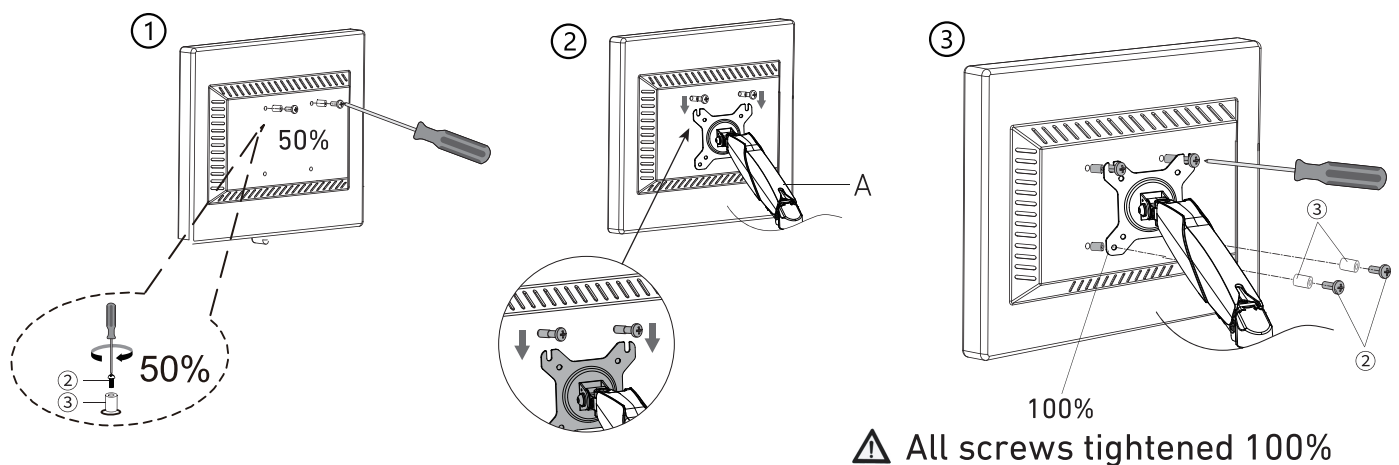


Install the top Screws ①*2 on the back of the monitor first, align them with the holes in the Upper Arm A, and tighten 50% with a screwdriver, then install the bottom Screws ①*2 and tighten them all with a screwdriver.

NOTE: Make sure all screws are tightened 100% before use.

Step 4-2

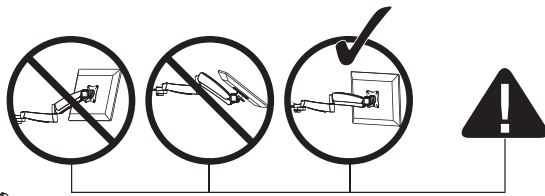
Recessed Surface Installation



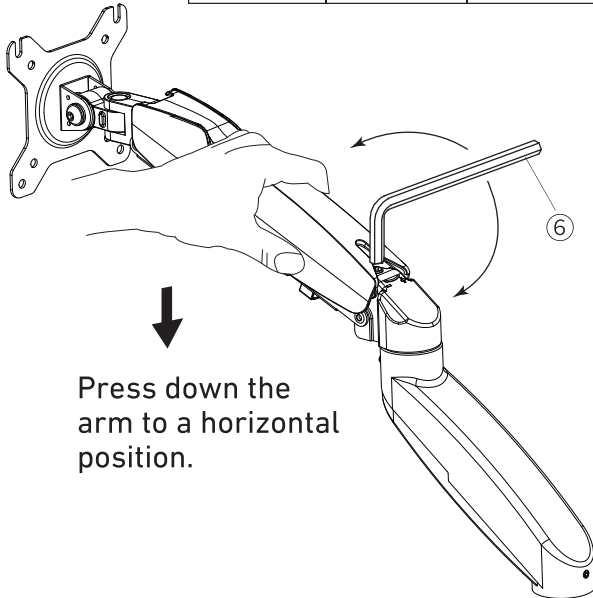
Install the top Screws ②*2 and Gasket ③*2 on the back of the monitor, align them with the holes of the Upper Arm A, and tighten them by 50% with a screwdriver, then install the bottom Screws ②*2 and Gasket ③*2 and tighten them all with a screwdriver.

NOTE: Make sure all screws are tightened to 100% before use.

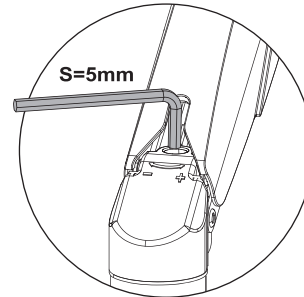
Step 5



Be sure to keep the arm in horizontal position during adjustment. Or else, it would be difficult to adjust the mount.



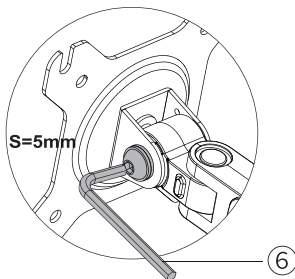
Press down the arm to a horizontal position.



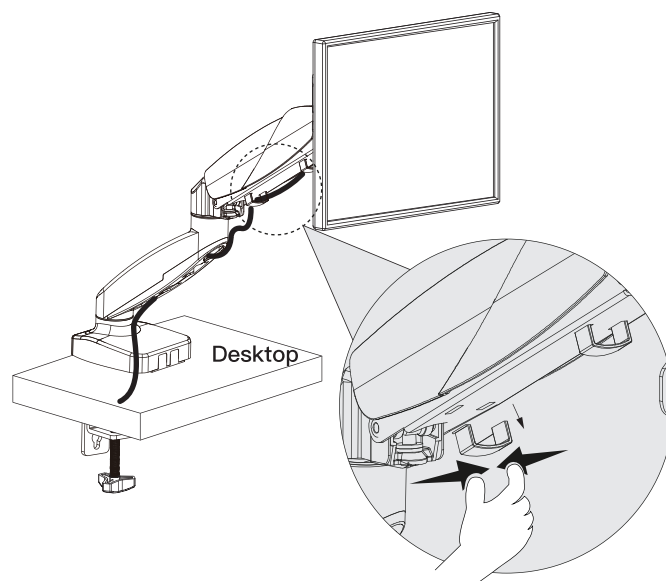
NOTE: Tightening prevents the upper arm from drooping during use.

After installing the monitor, adjust the bracket arm to the horizontal position, and use a Wrench ⑥ to adjust the tightness and position of the Upper Arm A according to the display.

Step 6

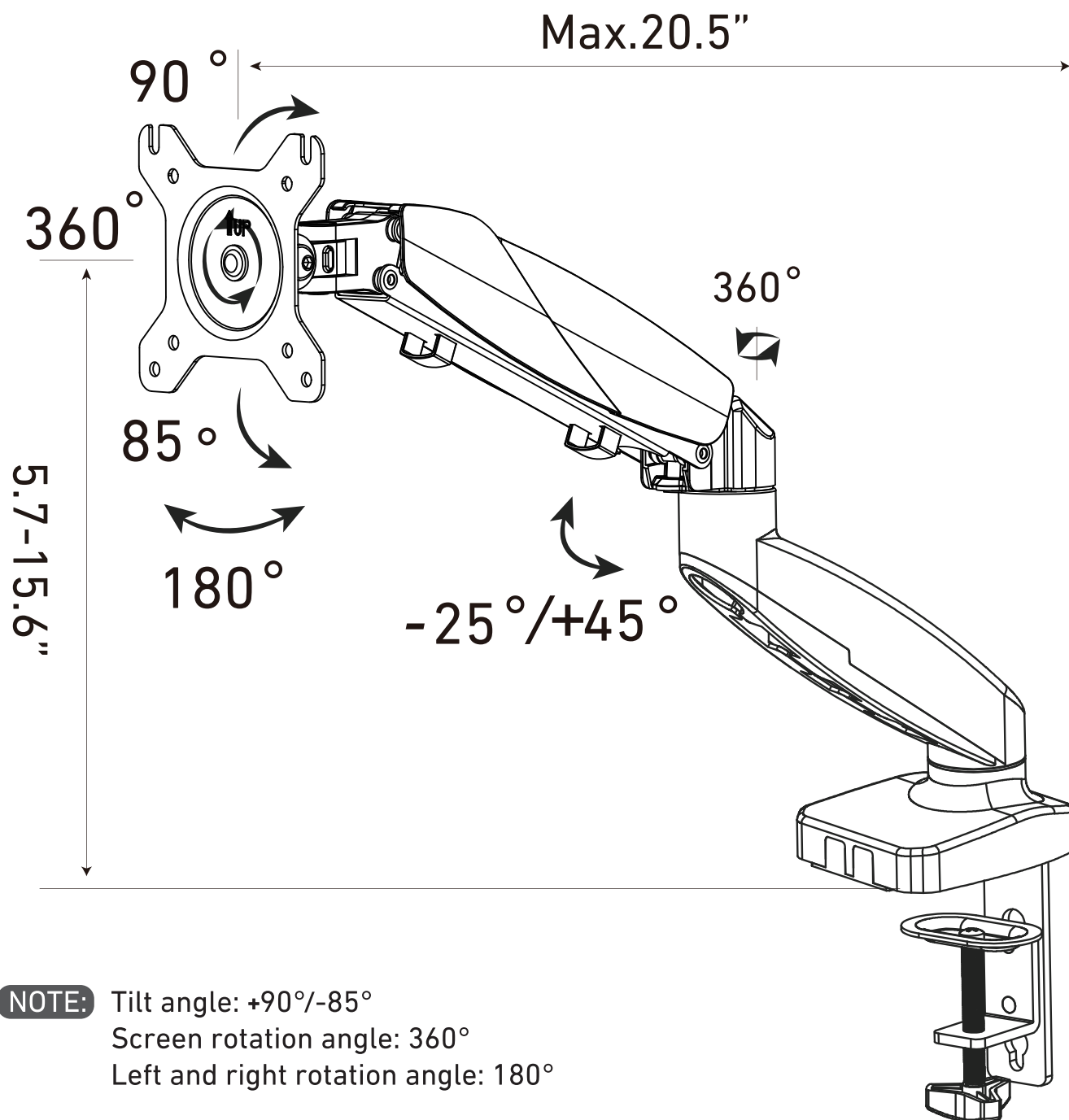


Use Wrench ⑥ to adjust the resistance by turning counter-clockwise to loosen and clockwise to tighten to prevent the monitor from drop off.



Remove the cable cover from the Upper Arm A and the Lower Arm B, store the monitor cables inside the cable cover, and lastly install the cable cover back.

NOTE: Leave enough slack of cables at arm joints for full adjustment.



Technical Support

(909)637-7665 | (909)637-7593

Other Info

HJ-Customer-Service@outlook.com

Thank you for choosing this product. We strive to provide you with the best quality products and service in the industry. Should you have any issues, please don't hesitate to contact us.