

INSTALLATION INSTRUCTIONS

Do not throw away the packaging material until the installation is complete.

Before hanging the shelf, make sure the screw is firmly fixed.

CARE INSTRUCTIONS

Wipe only with a soft and dry cloth.

To protect finish, avoid the use of abrasive cleaners. Any liquid spilled should be cleaned up immediately.



Shelf X 1

PARTS INCLUDED



Wall Plug x 2

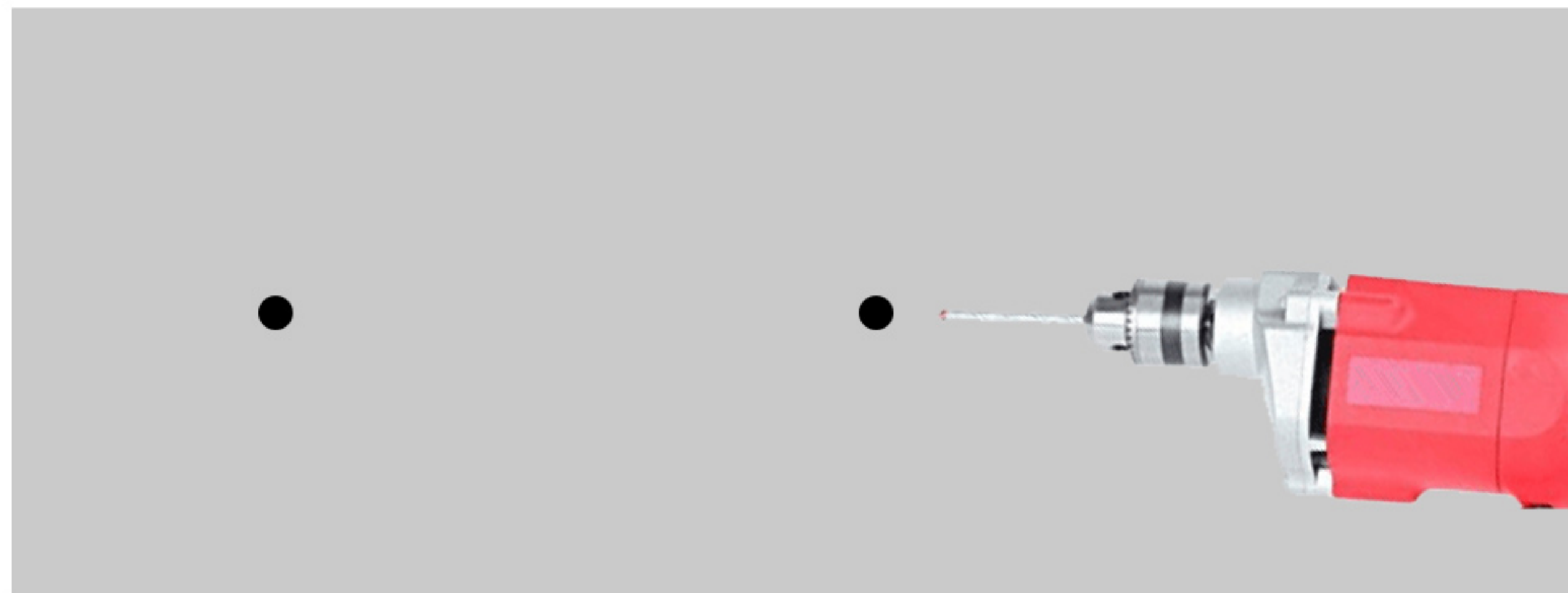


Screw x 2

STEP 1

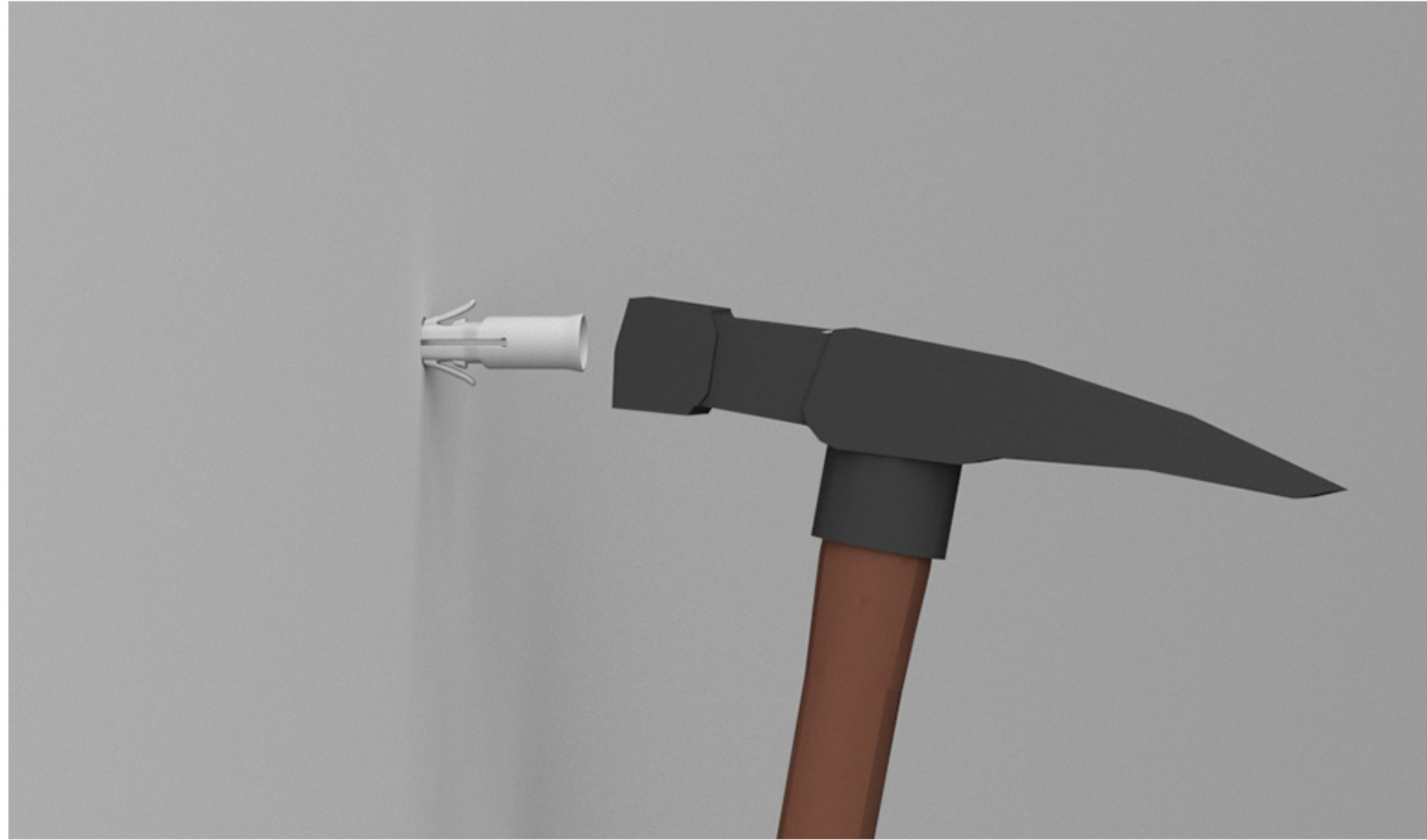


Mark the wall where you want to hang the shelf.



Drill holes at the points you just marked.

STEP 2

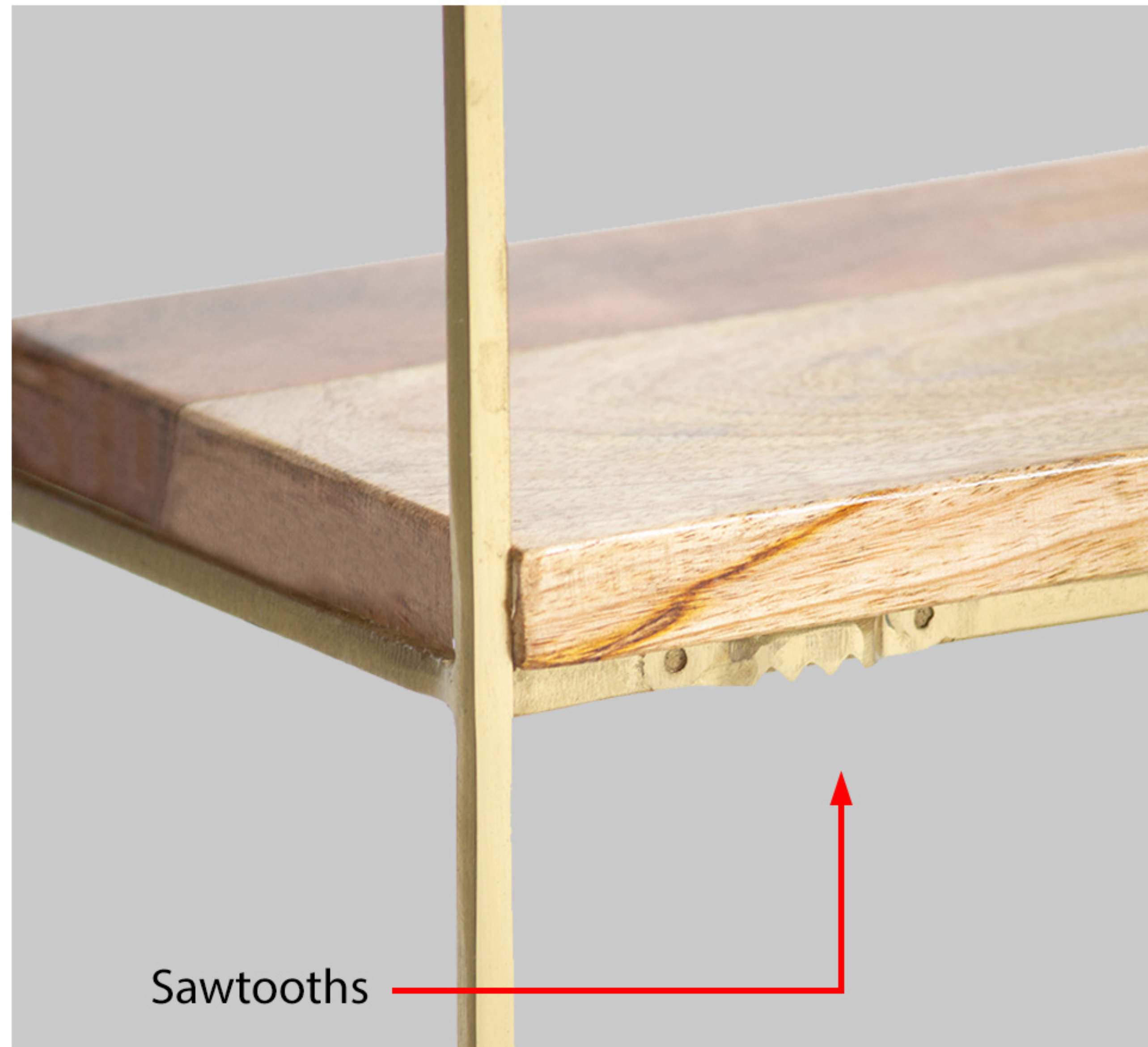


Using a hammer, insert the wall plugs inside the holes.



Fix the screws into the wall plug. Use a screwdriver to make sure they are secure.

STEP 3



Place the sawtooths over the screws.



Your installation is now complete!