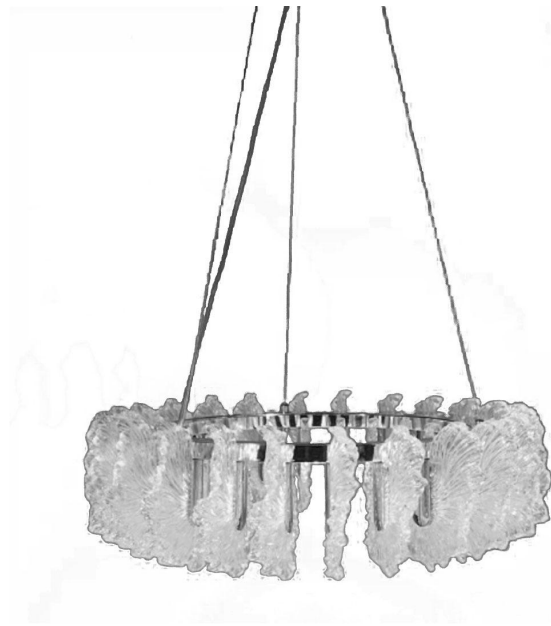
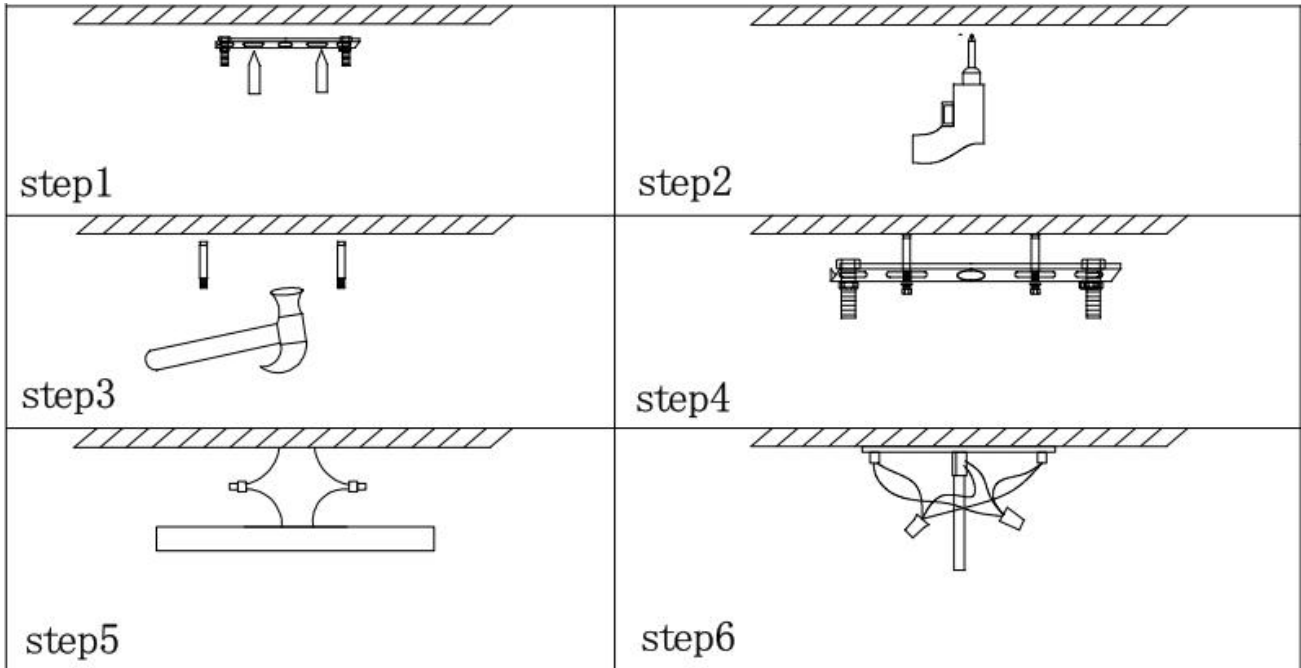


Installation instructions



1. THIS PRODUCT IS SUITABLE FOR THE POWER OF 110V.
2. PLEASE WEAR GLOVES AS INSTALLMENT AND AVOID ROT ON THE PLATE SURFACE .
3. PLEASE TURN OFF THE POWER SOURCE BY THE TIME OF CLEANING,AND MUST USE SOFT CLOTH .
4. PROHIBITED TO USE CORROSIVE DETERGENU .
5. MUST INSTALL IN THE STABLE PLACE,AND DO USUALLY PERIODICAL CHECKING .