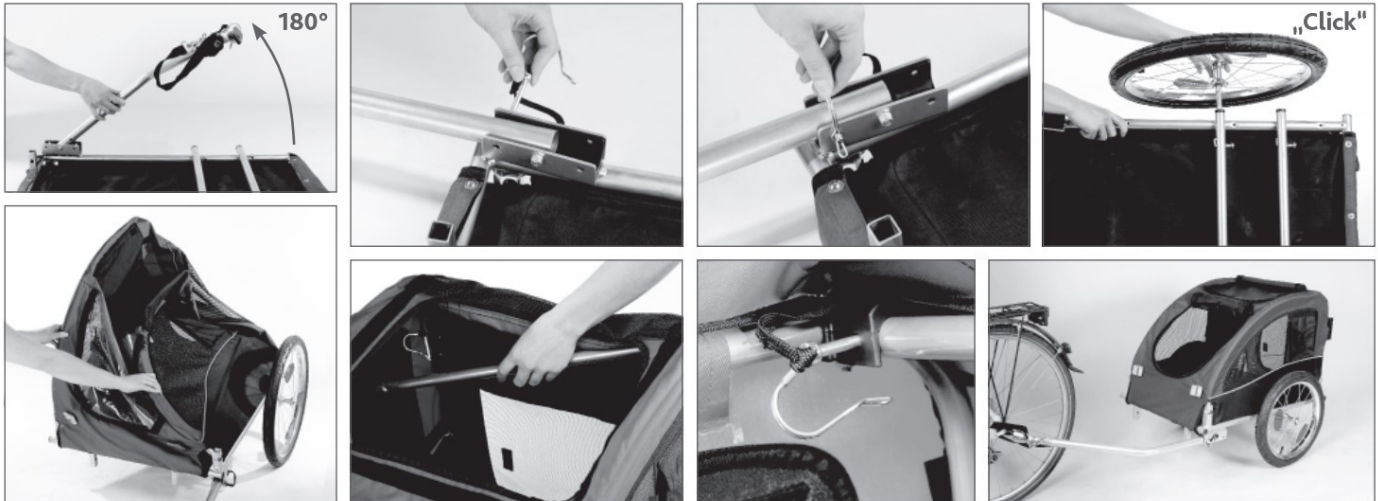


# Assembly Instructions



## GB Instructions

### Note:

- If you want to use the product as a bicycle trailer, please attach the wheels to the front wheel receiver.
- If you want to use the product for jogging with the corresponding conversion kit (item 12815 for Bicycle Trailer 12814 and item 12817 for Trailer 12816), please use the rear wheel receiver for attaching the wheels.
- The trailer is equipped with reflectors at the front and rear of the cabin and on each wheel. There is also a reflective strip across the top of the cabin at the back. When riding in low visibility, use a battery powered light on the trailer.
- Never tow the trailer without a correctly connected hitch and hitch safety strap.
- Carefully check the connection of the trailer to the bike before riding.
- Be aware that riding with the trailer increases your braking distance and may affect your ability to control the bicycle. Thoroughly practise in a safe area before riding with the trailer in busy areas.
- The trailer is intended for carrying pets only and not for transporting children!

### To connect to the bicycle:

The tow bar connects to the bicycle via the included quick-connect hitch. Attach the hitch to the left side of the rear bicycle wheel by removing the axle nut, positioning the hitch on the axle, and re-tightening the axle nut. If your bicycle has a quick-release wheel, remove the quick-release pin from the axle, insert it through the hitch, then re-assemble through the axle. The hitch should be installed with the male connector piece facing backwards and angling away from the bicycle. Position the trailer behind the bicycle so that the female connector on the tow bar can slide over the male connector on the hitch. Lock these connectors in place with the cotter pin. Loop the black safety strap around the bike frame and attach the snap swivel to the D-ring on the tow bar.

### To secure your pet:

Only ever allow your pet to get in or out through the rear door, with the front door closed. Have someone hold the bicycle firmly in an upright position, or lay the bicycle on its side. With the pet inside the trailer, snap one end of the (included) safety leash to the pet's collar and the other end to the D-ring located inside the trailer. Adjust the length of this leash so the pet cannot get out of the front window when it is open. Always close the rear door before riding off.

## How to accustom your dog to the trailer

Please take plenty of time and choose a quiet place so that you can train your dog without interruptions, which might distract or frighten the dog. It is also important to choose an even surface like a tarmac lot, for example. The dog should wear a harness; the rear door should be open and the front door should be closed. If possible take a second person to assist.

To get the dog used to the bicycle trailer the training will ideally be carried out in 3 steps:

### Step 1: The dog becomes acquainted with the bicycle trailer

1. Your assistant holds the bike and trailer steady during the entire training and prevents the trailer from wobbling. Lead your dog through the rear door into the trailer and hold him with the short lead.
2. Now close the rear door and open the front door. Then praise the dog and give him some tasty treats.
3. Close the front door again and open the rear door. Praise and reward your dog and let him get out on command.

### Step 2: The dog becomes acquainted with the trailer's motion

1. The assistant once again holds the bike and trailer steady while you guide the dog into the trailer. Attach the short lead to the dog's harness.
2. Close the rear door again and reward your dog by giving him some treats through the front door.
3. When the dog is sitting still the assistant slowly puts bike and trailer into motion. Walk alongside the trailer and praise and reward your dog.
  - If the dog becomes anxious please stop the trailer. As soon as the dog has calmed down, reward your dog with some treats and stop the training as in step 1.
  - If the dog keeps calm stop the training – as in step 1 – after 2 minutes of a slow ride.

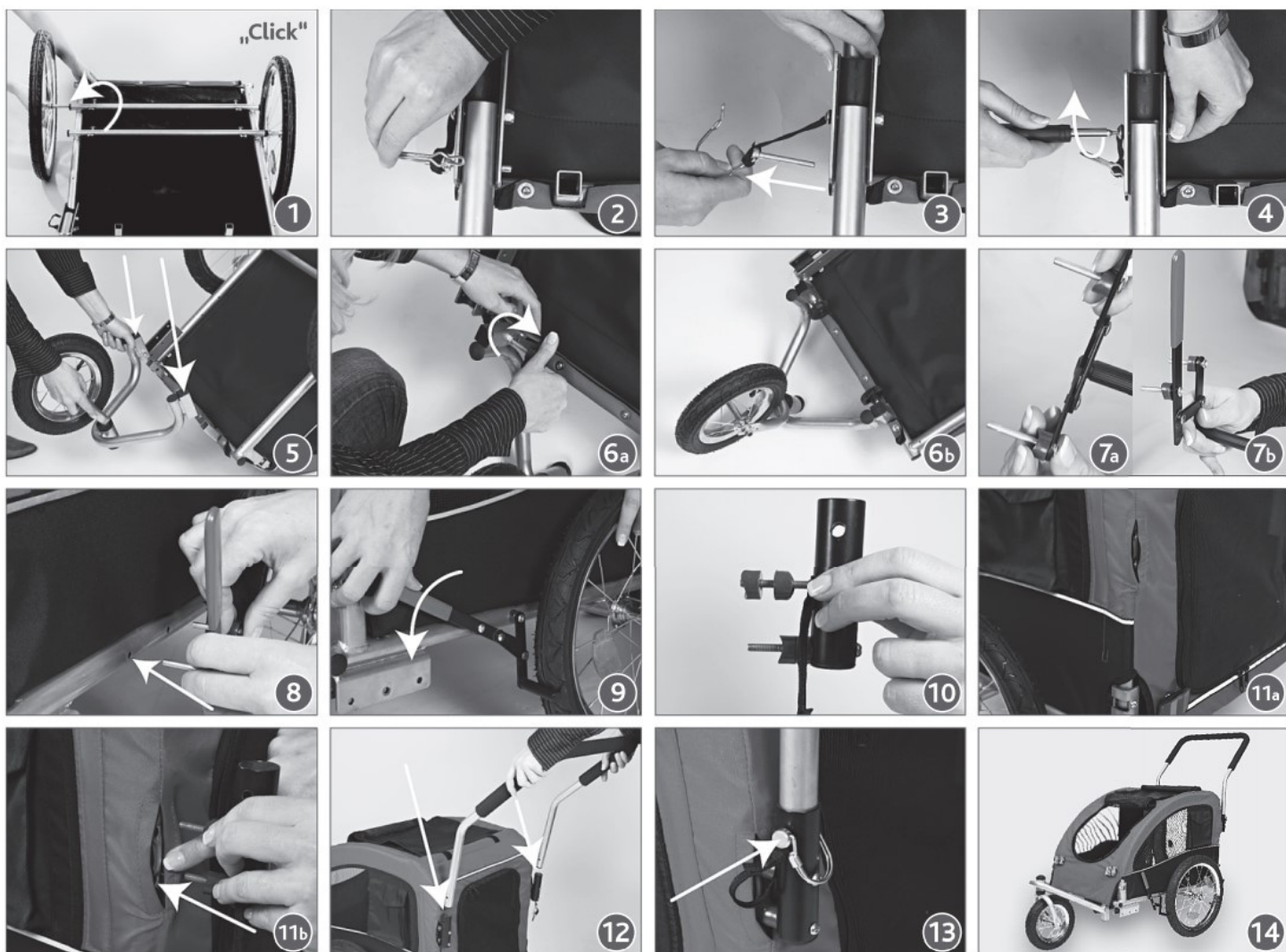
### Step 3: Riding with bike and trailer

1. The assistant once again holds the bike and trailer steady while you guide the dog into the trailer and attach the short lead to the dog's harness.
2. Close the rear door and reward your dog by giving him some treats through the front door.
3. When the dog is sitting still the assistant slowly starts to ride the bike with trailer. Walk alongside the trailer and give your dog tasty treats.
  - If the dog becomes anxious please stop cycling. Wait until the dog calms down again and give him a tasty treat while standing still. Now gently put the trailer into motion again (see step 2) and after a short time stop the training as in step 1 or step 2.
  - If the dog keeps calm stop the training as described after approx. 2 minutes.

If the dog stays calm you can extend the riding time step-by-step and cycle without any escort.

Repeat step 3 if necessary until your dog gets used to riding in the bicycle trailer.

# Conversion Manual



## GB Modification Instructions

### Notes:

- Please use the rear wheel receiver to attach the wheels if you want to convert the trailer into a jogger with this conversion kit.
- The trailer is equipped with reflectors at the front and rear of the cabin and on each wheel. There is also a reflective strip across the top of the cabin at the back. When riding in low visibility, use a battery powered light on the trailer.
- Do not exceed the maximum weight capacity. Regularly check the tyre pressure and tread. From time to time, grease the screws on the lever.
- The trailer is only intended for carrying pets and not for transporting children!

### To secure your pet

Only ever allow your pet to get in or out through the rear door, with the front door closed. When entering or exiting the cabin always apply the brake carefully. With the pet inside the trailer, snap one end of the (included) safety leash to the pet's collar and the other end to the D-ring located inside the trailer. Adjust the length of this leash so the pet cannot get out of the front door when it is open. Always close the rear door before riding off.

If your pet cannot get used to being transported in this way, please refer to the suggestions accompanying the bicycle trailer!