

DESIGNER COLLECTION

ESTEE

6632

SIZE

66" L x 32"W x 24"H

WATER CAPACITY

85 Gallons

WEIGHT

210 Pounds

INSTALLATION

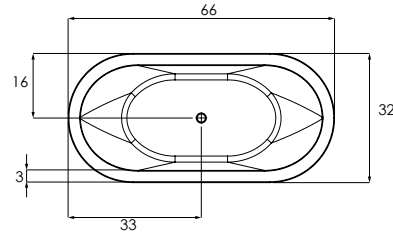
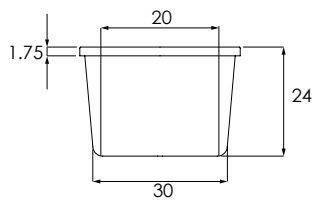
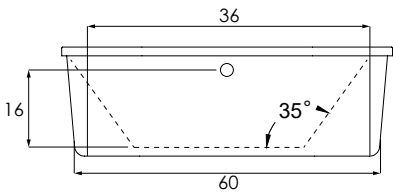
Freestanding

BACK SLOPE

35°

MATERIAL

Acrylic



MODEL

EST6632ATO	Tub Only
EST6632ATA	Thermal Air

COLORS

Standard	White Biscuit Bone
Premium Colors	Black Sterling Silver

FINISH

Matte Finish	MAT (must specify if desired)
Polished Finish	STANDARD

DUAL COLOR OPTION

MODEL/COLOR1/COLOR2	(XXX.XXX.XXX)
---------------------	---------------

SURFACES (outside only)

Metallic: Polished Nickel [PN]	
MODEL/METAL/COLOR	(XXX.XXX.XXX)

COLD PLUNGE | See Website for Install Form CLD.PL

EXPORT CRATE FRT.EXPCRT

EXTRA HIGH DENSITY HI.DEN

GRAB BARS (Pair) Refer to price book for all available finishes

Standard Grab Bars	GRA.BAR-XXX
Universal Grab Bars	UGB.BAR-XXX

MODEL

HEATED BACKREST INCLUDED ON THERMAL AIR

HYDRO BLANKET BLA.HEA-X
2 Zones | 3 Zones | 4 Zones (3 or 4 zones require two keypad)

HYDRO COAT HYC.COA

HYDRO EXPRESS 69.104-HYD.EXP-FRE

HYDRO FUSION | See Website for Install Form
Hydro Fusion (Tub Only) 29.102
Hydro Fusion w/ Ozone (Tub Only) 29.103
Hydro Fusion (TA, Whirlpool, Combo) 29.107

HYDRO INDULGE | See Website for Install Form HYD.IND

HYDRO OZONE INCLUDED ON THERMAL AIR

ISLAND TUB DRAIN ITD.XXX
ABS, PVC ITD.ABS | ITD.PVC
Cast Iron ITD.CST



HYDRO SYSTEMS



Headquarters
29132 Avenue Paine
Valencia, CA 91355

Manufacturing Facility
385 Highway 155 South
McDonough, GA 30253

Technical Support
support@hydrosystem.com

Orders Department
orders@hydrosystem.com

General Information
info@hydrosystem.com

Phone: 661-775-0686

Website: hydrosystem.com

CODES AND COMPLIANCES

Massachusetts code File no: P1-0614-491



All specifications and options subject to change without notice please contact a hydro systems representative for more information.

ESTEE

6632

DESCRIPTION	
LED TEMP. READOUT KEYPAD Upgrade only, must have a keypad controlled system to purchase.	LED.UPG
LIGHTING LED Bath Light Chromotherapy System	LIG.LED
MOLDED ARMRESTS Some molded armrests add an interior detail line to the bathtub 2 Armrests (one pair)	ARM.MOL-2
4 Armrests (two pairs)	ARM.MOL-4

DESCRIPTION	
PADDED HEADREST PILLOW Black only	41.128
REMOTE CONTROL Must must have system to purchase	REM.CON
TOWER Must specify size & location on tub. Can hide plumbing, fusion, or induldge.	TOW-XX
18" or 24"	25" - 30"
31" - 36"	37" - 42"
43" - 48"	49" - 54"
55" - 60"	Access Panel
INTEGRAL W/O (Std. round) Waste and overflow manufactured as part of the bath. Comes standard as a round overflow cover. Drain will be a tip-toe style and drain outlet will be a direct drain. (WHI, BIS, PC, PB, PN, BC, BB, BN, SC, SB, SN, ORB, PE, MB)	IWO.XX (INCLUDED)
W/O - Gold Finish Upgrade (PG, BG)	
LINEAR INTEGRAL W/O Waste and overflow manufactured as part of the bath. Drain will be a tip-toe style and drain outlet will be a direct drain.	LWO-XXX (NO CHARGE UPGRADE)



Headquarters
29132 Avenue Paine
Valencia, CA 91355

Manufacturing Facility
385 Highway 155 South
McDonough, GA 30253

Technical Support
support@hydrosystem.com

Orders Department
orders@hydrosystem.com

General Information
info@hydrosystem.com

Phone: 661-775-0686
Website: hydrosystem.com

CODES AND COMPLIANCES

Massachusetts code File no: P1-0614-491



All specifications and options subject to change without notice please contact a hydro systems representative for more information.

ESTEE

6632



STANDARD ACRYLIC COLORS



WHITE BISCUIT BONE

PREMIUM ACRYLIC COLORS



BLACK STERLING SILVER

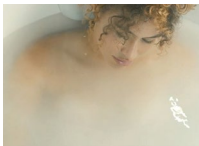
WELLNESS OPTIONS



Cold Plunge
Revitalizing cold hydrotherapy into a traditional tub



Thermal Air
Tiny bubbles into the bathwater and offers untold relaxing benefits, similar to Swedish massage



Hydro Indulge
A concentrated dose of oxygen-rich molecules cleanse and restore skin



Advanced UV system
Ozone and UV light helps to disinfect the water and keep it clean



Chromotherapy
Digitally controlled, multicolored lighting feature LED lighting system



Hydro Fusion
Totally silent operation maintains ideal temperature without adding hot water constantly



Hydro Blanket
Radiant heat emanates through the acrylic tub surface. Choose up to 2-4 panels.

OTHER OPTIONS

Additional options can be found on our website



Integral Waste and Overflow
Seamless built-in protection for bathtub



Grab Bars
Adds functionality and enhanced styling. Affords a mounting solution in virtually any position on any tub.



Tower
Ideal solution adding systems or roman tub faucet to a freestanding bathtub.



Island Tub Drain
Asymmetrical 18 Gauge Epoxy coated Metal Deck Flange makes installation in tight spaces easier.

Installation Tips:

- When adding Thermal Air, blower must be remotely located



Headquarters
29132 Avenue Paine
Valencia, CA 91355

Manufacturing Facility
385 Highway 155 South
McDonough, GA 30253

Technical Support
support@hydrosystem.com

Orders Department
orders@hydrosystem.com

General Information
info@hydrosystem.com

Phone: 661-775-0686
Website: hydrosystem.com

CODES AND COMPLIANCES

Massachusetts code File no: P1-0614-491



All specifications and options subject to change without notice please contact a hydro systems representative for more information.