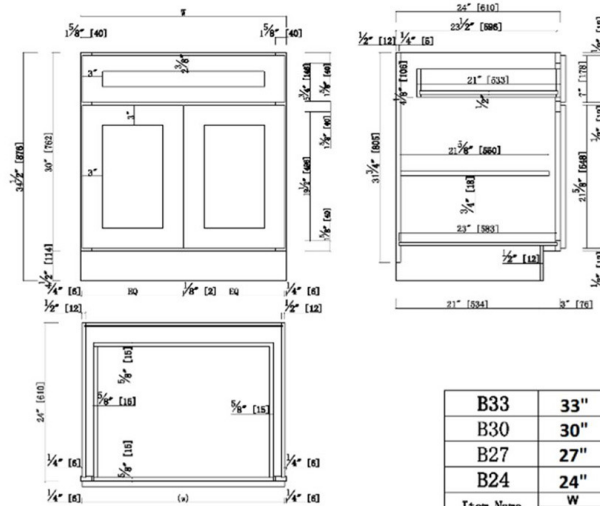


# ASSEMBLED KITCHEN CABINETS

## Base Kitchen Cabinet 24x34.5x24 Espresso



<b>B33</b>	<b>33"</b>	<b>32.5"</b>	<b>16.25"</b>
<b>B30</b>	<b>30"</b>	<b>29.5"</b>	<b>14.75"</b>
<b>B27</b>	<b>27"</b>	<b>26.5"</b>	<b>13.25"</b>
<b>B24</b>	<b>24"</b>	<b>23.5"</b>	<b>11.75"</b>
Item Name	W	(w)	HQ

## SPECIFICATIONS

<b>MATERIAL CONSTRUCTION:</b>	Wood
<b>WOOD SPECIES:</b>	Maple
<b>ASSEMBLED DIMENSIONS:</b>	34.5" H x 24" L x 24" D
<b>ASSEMBLED WEIGHT:</b>	72 lbs.
<b>KITCHEN CABINET TYPE:</b>	Base
<b>MOUNTING TYPE:</b>	Floor Mount
<b>CONSTRUCTION TYPE:</b>	Face Frame
<b>HINGE STYLE:</b>	Soft Close
<b>DOOR STYLE:</b>	2 Wood shaker doors
<b>NUMBER OF DRAWERS:</b>	1
<b>DRAWER DIMENSIONS 1:</b>	4.17" H x 21" L x 20.5" D
<b>DRAWER DIMENSIONS 2:</b>	N/A
<b>DRAWER DIMENSIONS 3:</b>	N/A
<b>DWR BOX MATERIAL:</b>	Solid Wood
<b>DWR CONSTRUCTION:</b>	Dove Tail
<b>DWR GLIDE:</b>	STD Easy Glide
<b>FAKE DWR QTY:</b>	0
<b>FAKE DWR LOCATION:</b>	N/A

<b>NUMBER OF SHELVES:</b>	1
<b>SHELF STYLE:</b>	Flat
<b>ADJUSTABLE SHELVES:</b>	Yes
<b>SHELF ADJUSTIBILITY INCREMENTS:</b>	2.5"
<b>SHELF DIMENSIONS:</b>	22.5" W x 21.625" D
<b>SHELF THICKNESS:</b>	0.75"
<b>SHELF MATERIAL:</b>	Plywood
<b>FACE FRAME MATERIAL:</b>	Solid Maple
<b>SIDES MATERIAL:</b>	Plywood
<b>BOTTOM MATERIAL:</b>	Plywood
<b>BACK PANEL MATERIAL:</b>	Plywood
<b>BACK BRACE MATERIAL:</b>	Wood
<b>TOE KICK INSET WIDTH:</b>	3

<b>WARRANTY:</b>	1-Year limited warranty
<b>LEGAL FOR SALE IN CALIFORNIA:</b>	Yes
<b>CARB COMPLIANT:</b>	CARB Phase 2
<b>TSCA TITLE VI COMPLIANT:</b>	Yes

