



# Fluence®

Frameless shower door  
**K-702221-6L**

## Features

- 1/4" (6 mm) thick Crystal Clear tempered glass.
- Frameless design emphasizes glass and creates a sleek, minimalist look.
- Smooth, quiet operation.
- Gently curved inside and outside towel bars complete the look of this door.
- CleanCoat® nanotechnology provides a smooth, nonstick surface to help prevent buildup of water stains, bacteria and mildew on your glass, to make it easy to clean and keep it looking like new.

## Material

- Tempered glass ensures maximum safety and durability.
- Anodized aluminum hardware prevents rusting or corrosion.

## Installation

- Fits opening widths 49" - 52" (1245 mm –1321 mm).
- 3/8" (10 mm) out-of-plumb adjustability per side allows for simpler installation.
- Door can be installed to open to the left or right to suit your bathroom layout.
- For residential use only.
- Not for use in hospitality.

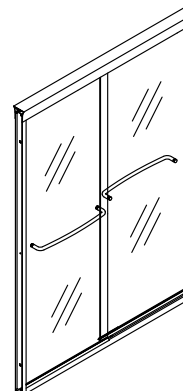
## Recommended Products/Accessories

K-23723 Faucet cleaner

## Included Components

Additional Components:

Hardware kit



## Codes/Standards

ANSI Z97.1

CPSC 16CFR 1201

## KOHLER® One-Year Limited Warranty

See website for detailed warranty information.

## Available Colors/Finishes

*Color tiles intended for reference only.*

Color	Code	Description
-------	------	-------------

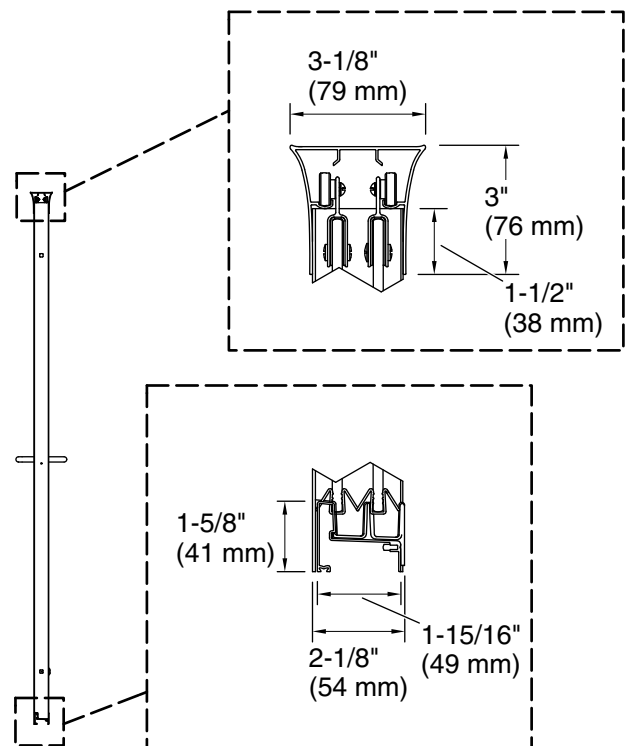
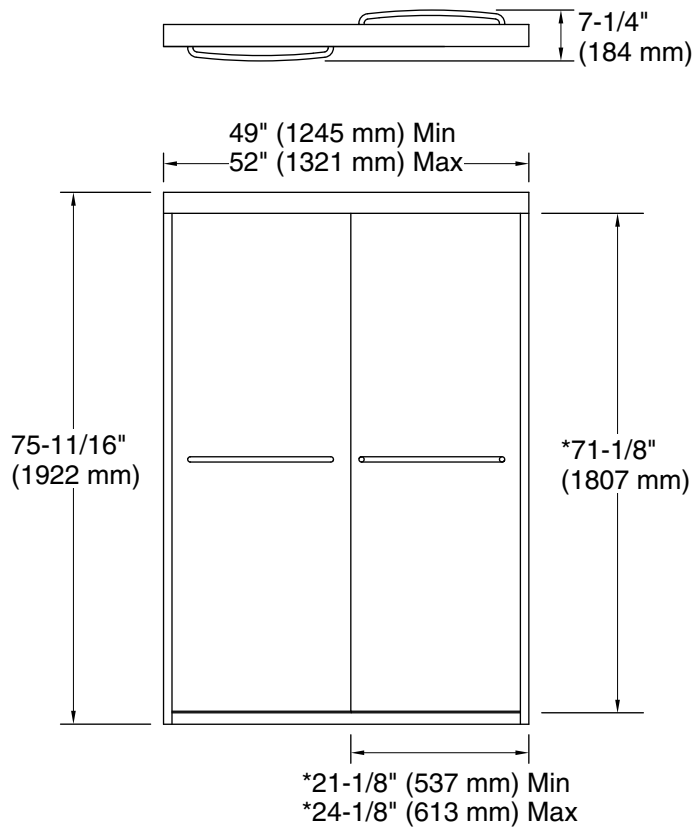


SHP	Bright Polished Silver
-----	------------------------

## Available Glass Options

Code	Description
------	-------------

L	Crystal Clear
---	---------------



**\*Walk-through**

## Technical Information

All product dimensions are nominal.

Installation type: For shower base installation

Opening Width - Min: 49" (1245 mm)

Opening Width - Max: 52" (1321 mm)

Walk-through - Min: 21-1/8" (537 mm)

Walk-through - Max: 24-1/8" (613 mm)

Glass thickness: 1/4" (6 mm)

Glass coating: CleanCoat®

## Notes

Install this product according to the installation instructions.

The vertical opening should be a minimum of 77-3/4" (1975 mm) to allow for installation clearance.