

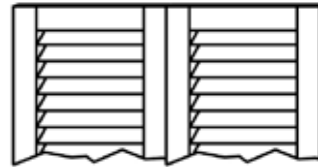
Atlantic

Premium Shutters®

General Guidelines for Installing Traditional Shutters



To deflect rain away from the structure, Louvered shutters should be installed so the louvers face AWAY from the structure when shutters are closed. (see diagram at right)



Shutters in
closed position

1. Pick shutters to fit window and put next to each window on top of saw horses to make sure shutters are paired properly. Lay two shutters face down next to each other and prepare to install hinges.



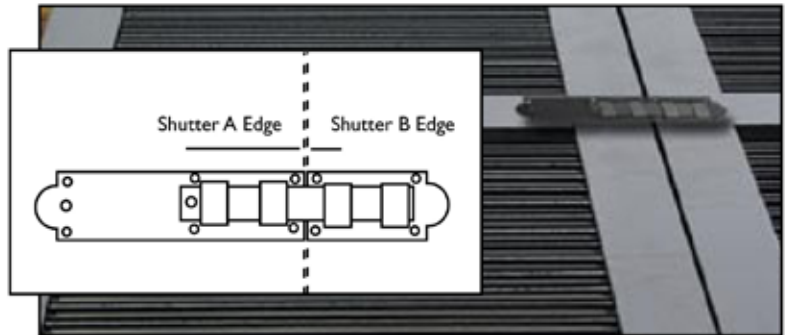
2. Install hinges after determining offset. Hinges are to be set at top and bottom even with outside. Drill holes with 1/8th pilot bit. Be careful not to drill all the way through shutter.



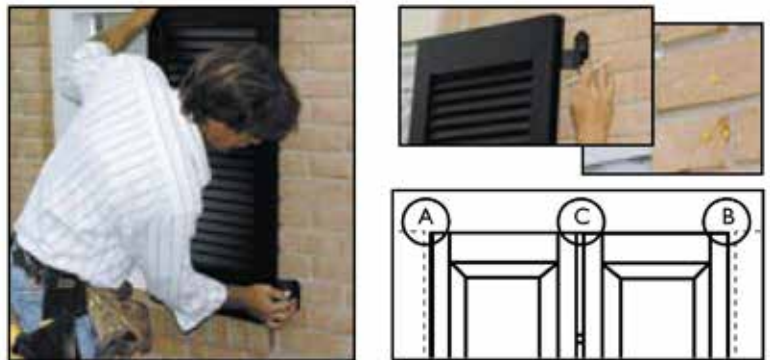
3. Position and install upper holdback clips 1" from top and center edge of stile. Shutters over 58" require sets of acorns; install similarly at top.



4. Install slide bolt. Turn shutters over and line-up slide bolt edge with shutter edge (see diagram at right). Pre-drill 1/8 slot hole (careful not to drill all the way through). Install slide bolt with screws. Shutters are now ready for installation.



5. Position shutter in opening allowing equal amounts of space between shutter and wall (A, B), and between shutters (C) to allow for smooth operation (see diagram at right). When attaching the pintel to the structure you may have to drill into mortar and brick, use appropriate molly's in mortar and brick.

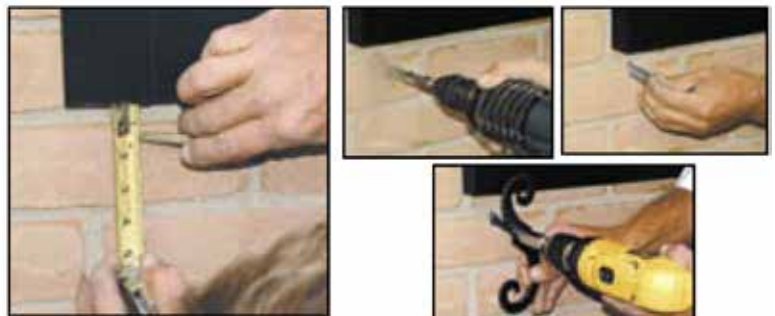


6. Install acorn clip. Swing shutter open and mark center of holdback clip. Install acorn clip into brick.



7. Install "S" Holdback.* The shutter is now held open by acorn anchor. Position shutter dog in correct location and mark for screws. Fasten to wall—1¾" down from shutter and 1¾" from outside edge.

**The acorn clip is better suited for holding the shutters in place, and as such, the "S" Holdback is recommended more for decorative use as opposed to a functional one.*



SHUTTER TERMINOLOGY

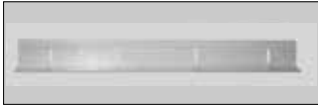
Beaded	A beaded detail that is molded into the inside edge of the face of each stile.
Board and Batten	Traditionally used on barns but ideal for more rustic homes. Authentic tongue and groove look with the front and back of the shutter featuring the same beveled look as if the shutter were made of individual boards.
Flat Panel	A solid shutter where the center portion of the shutter is recessed from the stiles.
Fixed Louvered	The louvers are tilted in towards the wall when the shutter is in the open position.
Leaf	A single shutter or 1/2 pair.
Mullions	The vertical element between the stiles that acts as a divider. Found in Bahama shutters.
Rabbeting	Also called "shiplap", used on many functional shutters. When closed, the shutter leaves fit into one another.
Radius or Arch Top	A shutter which has a curved top.
Rails	The horizontal crosspieces of a shutter (i.e. top rail, bottom rail, center rail).
Raised Panel	A solid shutter where the center portion of the panel protrudes outward from the surrounding routed bevel.
Shutter Capping	A metal (usually copper) capping that was placed over the top edge of the shutter to prevent water intrusion and the resulting wood rot. This capping is not necessary with Atlantic shutters as, due to materials used, they are impervious to both water intrusion and rot.
Stiles	The upright vertical sections of a shutter, which may be beaded or non-beaded.
Tilt Rod	Working louvered shutters have a rod, or tilt-rod, to move the louvers into the open or closed position. These are now non-functional, purely decorative for those who truly desire the more authentic look.

Atlantic

Premium Shutters®

Fixed Mounting Shutter Installation Instructions

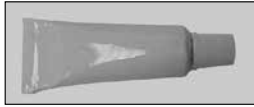
The following components are included for Fixed Mount Applications



(4) Polycarbonate mounting brackets (slotted)



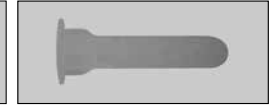
(8) #10 x 3/4" Stainless Steel Mounting Screws



(1) 0.5 oz. Tube All-Weather Silicone Caulk



(8) #10 x 2" Stainless Steel Mounting Screws



(8) Alligator Wall Anchors

1. LOCATE LOWER BRACKET.

Locate and position the mounting bracket next to the lower side of the window opening. The bracket is approximately 1" narrower than the shutter panel, which will leave 1/2" between window opening and the end of the mounting bracket. Using a level to verify that the mounting bracket is located correctly, mark the position of the two slots on the wall. The slots in the mounting bracket will allow for some minor adjustment in the vertical position.



2. DRILL 1/4" HOLE AND INSTALL ANCHOR INTO WALL.

With the slots properly marked on the wall, drill a 1/4" diameter hole 2" in depth at the desired location along the marked slots. In each of the 1/4" holes, place one of the alligator wall anchors. These anchors are suitable for mounting into concrete, aerated concrete, brick, masonry, stone, cinderblock, stucco and wood. Gently tap the head of the anchor until it is flush with the wall.



3. SECURE BRACKET INTO WALL WITH #10 X 2" SCREW.

Place the bracket up against the wall and locate the anchors through the mounting slots. Drive the 2" screw through the slot and into the alligator wall anchor. The anchor will expand in the wall and is not capable of coming out. However, the anchor may be reused if adjustment of the screw depth is necessary during the initial installation. Repeat this step to drive a second screw through the second slot. Make sure the bracket and mounting screws are secure onto the wall.



4. LOCATE TOP BRACKET AND REPEAT STEPS 2 & 3 TO MOUNT.

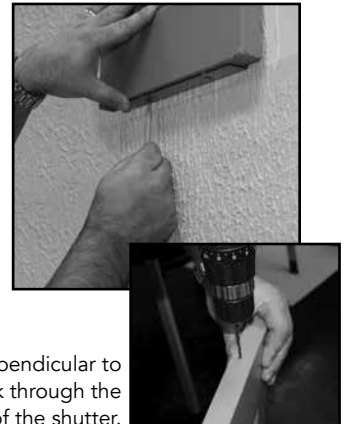
Place the shutter on the lower bracket and stabilize so it cannot tip off. Take the second mounting bracket and locate the correct position at the top of the shutter panel by scribing a line to locate the height. Remove the shutter panel carefully. Place the bracket on the wall and mark the two slots in the desired location. Repeat steps #2 & #3 to complete the installation of the mounting bracket.



NOTE: If your shutter is longer than 48", install side brackets for additional support. See page 3.

5. MEASURE AND DRILL 9/64" PILOT HOLES INTO SHUTTER FOR #10 X 3/4" SCREW.

Place the shutter panel up against the wall in the desired position. The lower mounting bracket will support the weight, but be sure to stabilize the shutter panel so it does not tip off. Mark the location of the holes in the brackets to the top and bottom ends of the shutter. Remove the shutter from the wall and drill a 9/64" diameter hole 1" deep into the ends of the shutter in the 4 marked locations.



Make sure to drill the holes perpendicular to the shutter so as not to break through the surface of the shutter.

6. PLACE SILICONE ON THREADS OF #10 X 3/4" SCREWS.

Take each of the 3/4" mounting screws and spread a bead of all-weather silicone caulk along the threads. This will provide a barrier between the mounting holes and the interior of the shutter panel.



7. DRIVE #10 X 3/4" SCREW INTO SHUTTER.

Drive the 3/4" mounting screw, with silicone on the threads, into the pre-drilled pilot hole until the screw is snug. Make sure not to overtighten the mounting screw, which may cause the material to strip out. Repeat this for each of the mounting screws, two per mounting bracket. The shutter panel is now properly mounted. Repeat steps 1-7 for the second shutter.

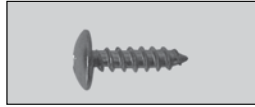


You have successfully mounted a pair of shutters.

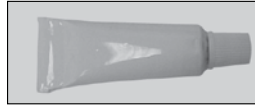
The following components are included for **Fixed Mount Applications over 48" in length.**



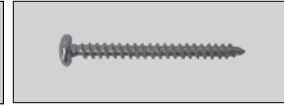
(2) Polycarbonate mounting brackets (slotted)



(4) #10 x 3/4" Stainless Steel Mounting Screws



(1) 0.5 oz. Tube All-Weather Silicone Caulk



(4) #10 x 2" Stainless Steel Mounting Screws



(4) Alligator Wall Anchors

Installation of side brackets for additional support. For shutters longer than 48".

1. LOCATE CENTER

Find the center of the shutter and place a mark.



2. POSITION BRACKET ON WALL

Align your 4 1/2" bracket to the center of the shutter and place your shutter between the upper and lower brackets on the wall. Be sure to stabilize the shutter so it does not tip off. Mark the outside edge of the bracket. With side bracket remaining on the wall, remove shutter and mark slots on bracket.

Note: This is performed on both sides.



3. DRILL 1/4" HOLE AND INSTALL ANCHOR INTO WALL

With the slots properly marked on the wall drill a 1/4" diameter hole 2" in depth at the desired location along the marked slots. In each of the 1/4" holes, place one of the alligator wall anchors. Gently tap the head of the anchor until it is flush with the wall.



4. SECURE BRACKET INTO WALL AT DESIRED HEIGHT WITH #10 X 2" SCREW

Place the bracket up against the wall and locate the anchors through the mounting slots. Drive the 2" screw through the slot and into the alligator wall anchor. The anchor will expand in the wall and is not capable of coming out. However, the anchor may be reused if adjustment of the screw depth is necessary during the initial installation. Make sure the bracket and mounting screw are secure onto the wall.



5. MEASURE AND DRILL 9/64" PILOT HOLES INTO SHUTTER FOR #10 X 3/4" SCREW

Place the shutter panel up against the wall in the desired position. The lower mounting bracket will support the weight, but be sure to stabilize the shutter panel so it does not tip off. Mark the location of the holes in the side bracket. Remove the shutter from the wall and drill a 9/64" diameter hole 1" deep into the side of the shutter in the 3 marked locations.



6. PLACE SILICONE ON THREADS OF #10 X 3/4" SCREWS

Take each of the 3/4" mounting screws and spread a bead of all-weather silicone caulk along the threads. This will provide a barrier between the mounting holes and the interior of the shutter panel.



7. DRIVE #10 X 3/4" SCREWS INTO SHUTTER

Drive the 3/4" mounting screw, with silicone on the threads, into the pre-drilled pilot hole until the screw is snug. Make sure not to overtighten the mounting screw, which may cause the material to strip out. The shutter panel is now properly mounted. Repeat steps 1-7 for the second shutter.



You have successfully side mounted a pair of shutters

Atlantic

Premium Shutters®

Horizontal Storm Bar Installation Instructions



1 Storm Bar Kit (Shutters Less Than 46" in Height)

Contains:

- 1 pc. Storm Bar
- 4 pc. 1/4-20 x 1-1/2 Carriage Bolt
- 4 pc. 1/4" Bolt Retainer
- 4 pc. 1/4" Flanged Wing Nut

2 Storm Bar Kit (Shutters 46"-102" in Height)

Contains:

- 2 pc. Storm Bar
- 8 pc. 1/4-20 x 1-1/2 Carriage Bolt
- 8 pc. 1/4" Bolt Retainer
- 8 pc. 1/4" Flanged Wing Nut



Storm Bar



1/4-20 Flanged Wing Nut



1/4" Bolt Retainer



1/4-20 x 1-1/2" Carriage Bolt

STEP 1

Close shutters over the window.



STEP 2

Reference the chart for the number of Storm Bars required for the shutter size.

Shutter Height	Number of Storm Bars
Less Than 46"	1
46" to 102"	2

For one Storm Bar, see Step 3A.
For two Storm Bars, see Step 3B.

STEP 3A - ONE STORM BAR

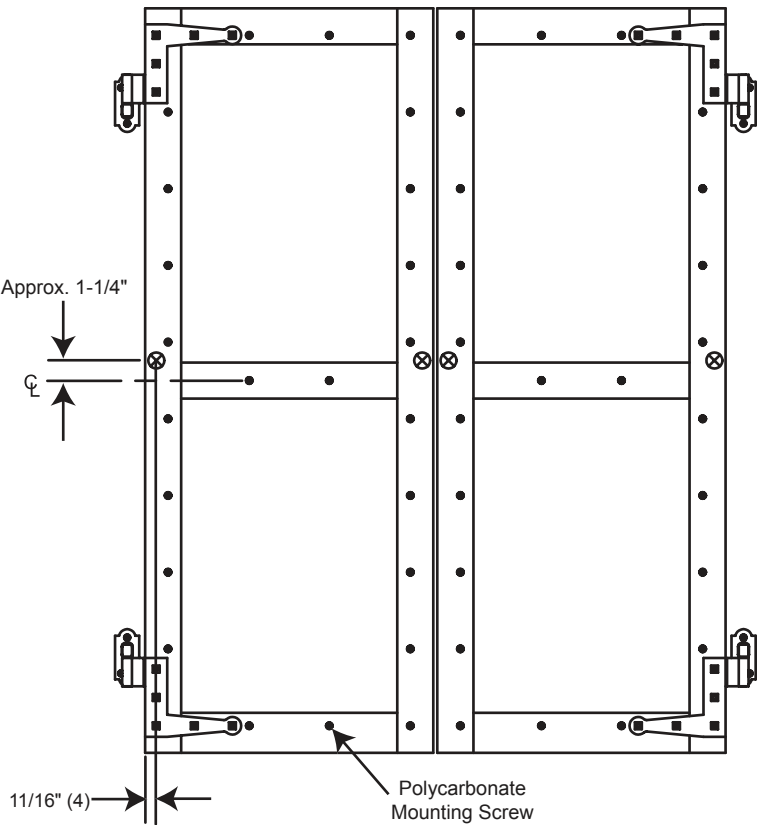
Mark the holes for mounting the Storm Bar. Holes are located in one set of four, horizontally across the shutter assembly.

Vertical location: Measure approximately 1-1/4" above or below the center of the shutters. Choose the direction that will locate the bar between the Polycarbonate Mounting Screws nearest the center of the shutter. Adjust the position of the holes accordingly so the Storm Bar will sit flat on the shutters and removal of the screws is not necessary.

Horizontal location: Measure 11/16" from each side of both shutters at the previous height location and mark (four holes total).

Proceed to Step 4.

Hole locations marked on diagram with 

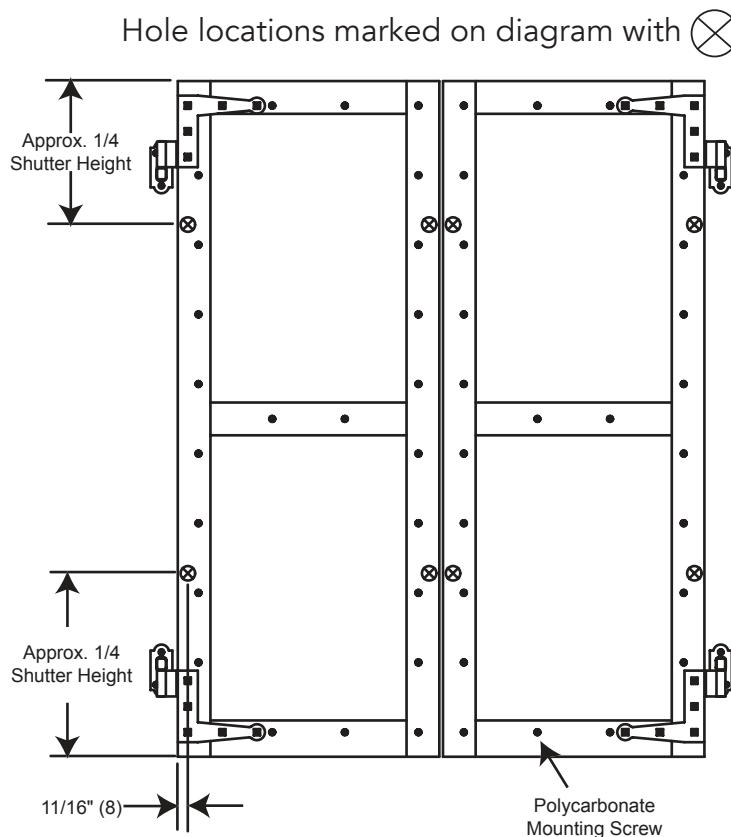


STEP 3B - TWO STORM BARS

Mark the holes for mounting the Storm Bars. Holes are located in two sets of four, horizontally across the shutter assembly.

Vertical location: Measure approximately 1/4 the height of the shutters from the top and mark. Measure approximately 1/4 the height of the shutters from the bottom and mark. This should locate the bar between the Polycarbonate Mounting Screws. Adjust the position of the holes accordingly so the Storm Bars will sit flat on the shutters and removal of the screws is not necessary.

Horizontal location: Measure 11/16" from each side of both shutters at the previous height locations and mark (eight holes total).



STEP 4

Drill eight 1/4" diameter holes completely through the shutters. If installing on Architectural Collection shutters, enlarge the 1/4" hole on the side of the shutters opposite the polycarbonate through the first wall only with a 5/16" drill. (This is so the bolt will seat in the shutter completely in the next two steps.)

Note: Use caution when drilling through the shutters to avoid chipping off any paint on the face of the shutters.



STEP 5A

Insert 1/4-20 x 1-1/2 Carriage Bolts through holes in the shutters. The bolts should be inserted so the stud end sticks out of the side with the polycarbonate attached.



STEP 5B

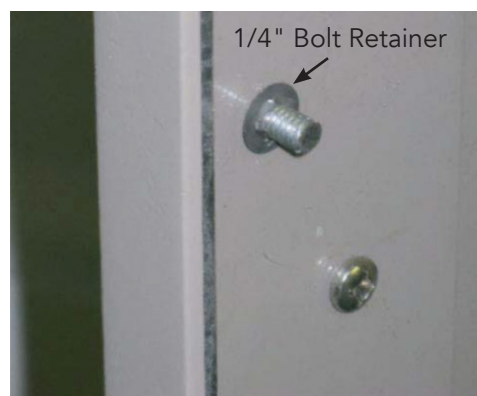
Give each bolt head a firm tap with a hammer to seat the bolt into the shutter.

Note: Use caution to avoid splitting the fiberglass stile if mounting on Architectural Collection Shutters (N/A for Classic Collection Shutters).



STEP 6

Place one 1/4" Bolt Retainer over the end of each bolt (teeth facing out) and press into place, using a 7/16" socket (or similar tool), snugly against the shutter. Hold the bolt head in place while attaching the Bolt Retainer to ensure that it is fully seated (maximum number of threads exposed). *Note: Bolts remain in the shutters during Storm Bar use and also while bars are in storage.



STEP 7

Place one Storm Bar on the shutter assembly by aligning the slots in the bar with one set of the four bolt studs sticking out of the shutter assembly.

Note: Top Storm Bar orientation must be as shown with the protruding leg of the bar positioned on top. Bottom bar is opposite orientation (N/A if shutters are less than 46" tall).



STEP 8

Attach one 1/4-20 Flanged Wing Nut to each stud and tighten.



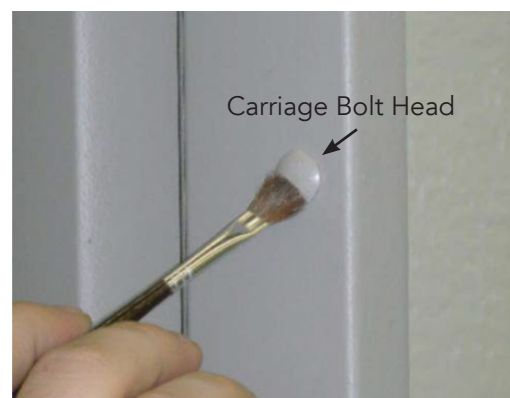
STEP 9

Repeat steps seven and eight for the other Storm Bar. (Skip this step if only mounting one Storm Bar.) When completed, the assembly should resemble the picture.



STEP 10

Optional: Use shutter touch-up paint (supplied with shutters) to paint the heads of the 1/4-20 x 1-1/2 Carriage Bolts.



STEP 11

Final Storm Bar assembly should resemble the picture.

Two Storm Bars



One Storm Bar



STORM BAR REMOVAL AND STORAGE

1. Remove the Wing Nuts and Storm Bar(s).
2. Attach the Wing Nuts to the studs and tighten.
3. Store Storm Bar(s).



Atlantic

Premium Shutters®

U-Bar Storm Bar Installation Instructions

1 Storm Bar Kit (Shutters Less Than 46" in Height)

Contains:

- 1 pc. Storm U-Bar
- 2 pc. 1/4-20 x 1-1/2 Carriage Bolt
- 2 pc. 1/4" Bolt Retainer
- 2 pc. 1/4" Flanged Wing Nut

2 Storm Bar Kit (Shutters 46"-102" in Height)

Contains:

- 2 pc. Storm U-Bar
- 4 pc. 1/4-20 x 1-1/2 Carriage Bolt
- 4 pc. 1/4" Bolt Retainer
- 4 pc. 1/4" Flanged Wing Nut



1/4-20 Flanged Wing Nut



1/4" Bolt Retainer



1/4-20 x 1-1/2" Carriage Bolt

STEP 1

Close shutters over the window.



STEP 2

Reference the chart for the number of Storm Bars required for the shutter size.

Shutter Height	Number of Storm Bars
Less Than 46"	1
46" to 102"	2

For one Storm Bar, see Step 3A.
For two Storm Bars, see Step 3B.

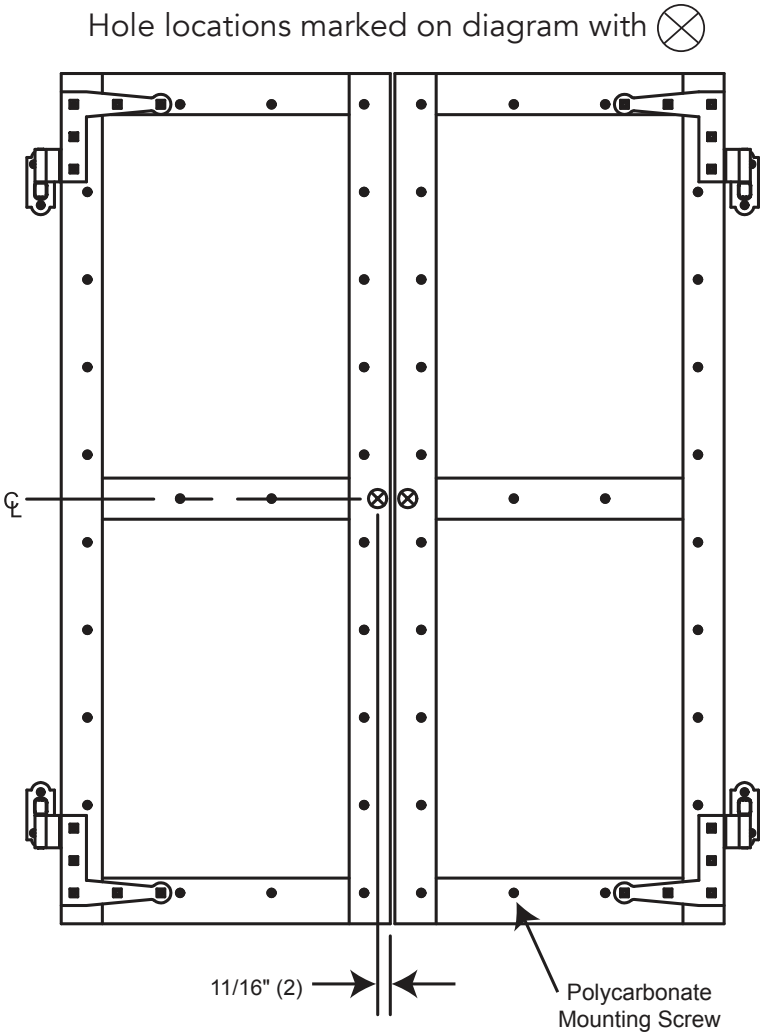
STEP 3A - ONE STORM BAR

Mark the holes for mounting the Storm Bar. One hole is drilled in each shutter, near the center of the assembly.

Vertical location: Measure and find the center of the shutter.

Horizontal location: Measure 11/16" from the inside edge of both shutters at the previous height location and mark (two holes total).

Proceed to Step 4.

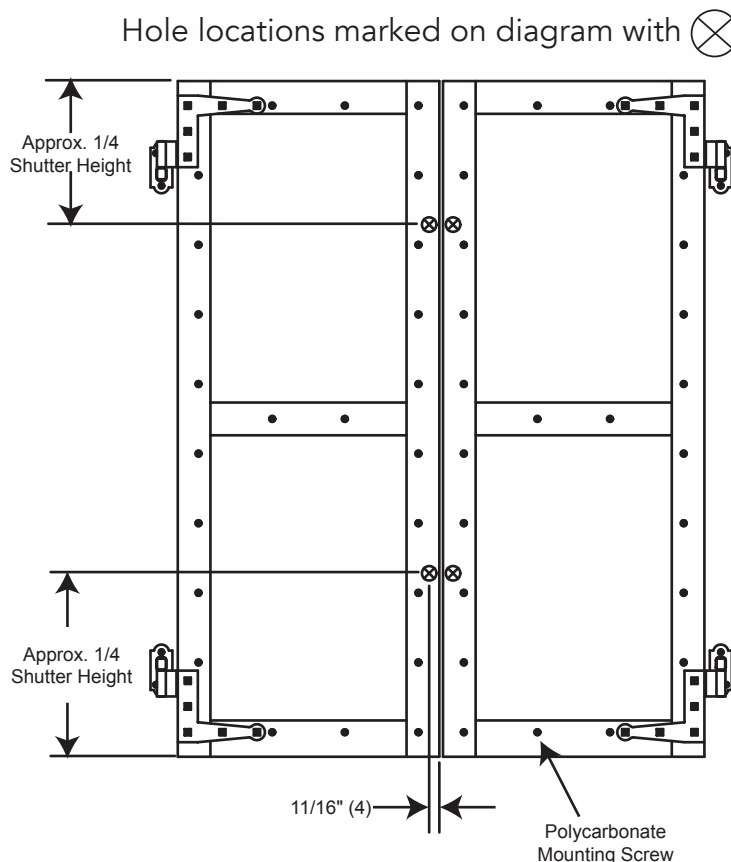


STEP 3B - TWO STORM BARS

Mark the holes for mounting the Storm Bars. Holes are located in two sets of two, horizontally across the shutter assembly.

Vertical location: Measure approximately 1/4 the height of the shutters from the top and mark. Measure approximately 1/4 the height of the shutters from the bottom and mark.

Horizontal location: Measure 11/16" from the inside edge of both shutters at the previous height locations and mark (four holes total).



STEP 4

For one Storm Bar, drill two 1/4" diameter holes completely through the shutters at marked locations.

OR

For two Storm Bars, drill four 1/4" diameter holes completely through the shutters at marked locations. *Note: Use caution when drilling through the shutters to avoid chipping off any paint on the face of the shutters.



STEP 5A

Insert 1/4-20 x 1-1/2 Carriage Bolts through holes in the shutters. The bolts should be inserted from the side with polycarbonate attached, so the stud end sticks out of the side opposite the polycarbonate (inside the house).



STEP 5B

Give each bolt head a firm tap with a hammer to seat the bolt into the shutter.



STEP 6

Place one 1/4" Bolt Retainer over the end of each bolt (teeth facing out) and press into place, using a 7/16" socket (or similar tool), snugly against the shutter. Hold the bolt head in place while attaching the Bolt Retainer to ensure that it is fully seated (maximum number of threads exposed).

Note: Bolts remain in the shutters during Storm Bar use and also while bars are in storage.



STEP 7

Place one Storm Bar on the shutter assembly by aligning the slots in the bar with one set of the two bolt studs sticking out of the shutter assembly.



STEP 8

Attach one 1/4-20 Flanged Wing Nut to each stud and tighten.



STEP 9

Repeat steps seven and eight for the other Storm Bar. (Skip this step if only mounting one Storm Bar.) When completed, the assembly should resemble the picture.



STEP 10

Optional: Use shutter touch-up paint (supplied with shutters) to paint the heads of the 1/4-20 x 1-1/2 Carriage Bolts.



STEP 11

Final Storm Bar assembly should resemble the picture.

Two Storm Bars



One Storm Bar



STORM BAR REMOVAL AND STORAGE

1. Remove the Wing Nuts and Storm Bar(s).
2. Attach the Wing Nuts to the studs and tighten.
3. Store Storm Bar(s).



Hardware for Shutters with Storm System Installation Instructions

For varying heights of shutters, use the following quantities of hinges per shutter:

- Height from 12" to 48", Two hinges per shutter
- Height greater than 48" to 76", Three hinges per shutter
- Height greater than 76" to 102", Four hinges per shutter

L-Hinges and Flat Hinges are the only approved hardware for storm rated mounting.

L-Hinges are typically used at the top and bottom of the shutter. Flat Hinges are used between L-Hinges when 3 or 4 hinges are needed.

The L-Hinge is shown for instructional purposes. If a Flat Hinge is being used, follow the same installation methods.



L-Hinge



Flat Hinge



#12 x 1" Screw

STEP 1

Measure and mark hinge locations as shown. The top and bottom hinges are typically placed 1" from the ends of the shutter.



STEP 2

Align the hinge to the outer edge of the shutter and to one of the marks previously measured. If a Polycarbonate Mounting Screw is in the way, remove it.



Polycarbonate
Mounting Screw

STEP 3

Using the hinge as a template, drill 5/32" pilot holes in the shutter. Use caution not to drill completely through the shutter.



STEP 4

Attach the hinge using the supplied #12 x 1" screws.

STEP 5

Repeat steps 2-4 for the remaining hinge(s).

STEP 6

Repeat steps 1-5 for the other shutter. Make sure to attach hinges to the opposite edge of the shutter as the first. This creates a left and right shutter.



PINTEL MOUNTING

ANCHOR SPECIFICATIONS

- Existing structure may be concrete, hollow block or wood framing. For proper anchor type based on type of existing structure, see anchor schedule below.
- Anchors shall be installed in accordance with manufacturers' recommendations.
- Where existing structure is concrete or hollow concrete block, minimum edge distance shall be 3" for all anchors.
- Where existing structure is wood framing, existing conditions may vary. Field verify that fasteners are into adequate wood framing members, not plywood.
- Minimum embedment and edge distance excludes stucco or other exterior wall finishes.

HINGE PINTEL ALLOWABLE ANCHORS:

To concrete: 3" fastener edge distance
- 3/16" X 1 3/4" embed tapcon or equivalent

To wood: 3/4" fastener edge distance
- #10 X 1 3/4" embed wood screws or equivalent

STEP 1

Hold the shutters in place in the window opening. Using shims, position the shutter in the opening to create an 1/8" gap around the top, bottom, and hinge side of the shutter. This is only necessary when mounting the shutter in an opening. The 1/8" gap does not apply for overlap conditions.



STEP 2

Identify the locations of the Pintels on the wall and mount each Pintel pointing in the upward position, except for the bottom pintel. See anchor specifications above for correct fastener.



STEP 3

Mount the bottom Pintel in the downward position. See anchor specifications above for correct fastener. Mounting the bottom Pintel in the downward position prevents the shutter from lifting off.



STEP 4

If Flat Hinges (not shown) are used between LHinges, the corresponding Pintels should point upward.

Once all the Pintels have been fastened to the wall, remove the shims.



STEP 5

Repeat steps 1-4 for the shutter on the opposite side.

