

Mel lounge chair

by Ramón Esteve

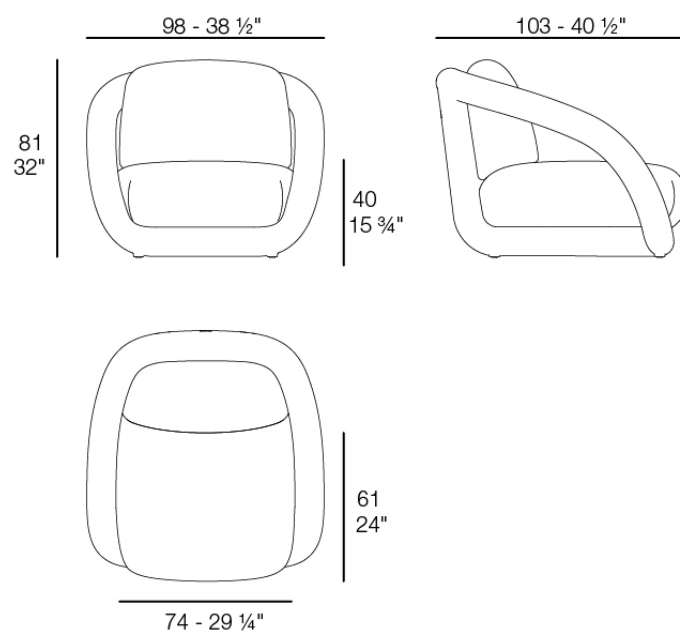
Mel explores the avant-garde from the everyday: enveloping shapes, tubular gestures, and a presence that lingers in the eye. With a sculptural and iconic character, its gentle, sinuous curves generate a strong visual identity while evoking the memory of wicker furniture—reinterpreted through a continuous, tubular, contemporary language.



Info

Description

Weight: 17 Kg



MEL Butaca
MEL Armchair
Ref. 66500

Finishes

finishes

Basic

Ref. 66500



white 2001



black 2002



ecru 2003



tortora 2004



gray 2005



anthracite 2006



brown 2008



garnet 2015



green 2016



cream 2017



blue 2018



camel 2020



clay 2022



ecru granite



cream granite

Matt Polyethylene

Lacquered

Ref. 66500F



white 3101



black 3102



ecru 3103



tortora 3104



gray 3105

VONDOM



anthracite 3106



garnet 3113



green 3116



cream 3117



blue 3118



camel 3120



clay

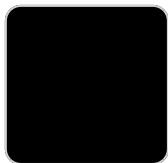


brown 3125

Lacquered Polyethylene

fabric

Ref. 66500CO

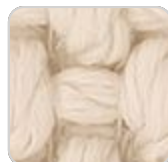


GETARIA

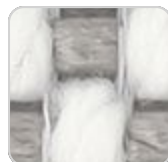
Ref. 66500CO



granite 10008 getaria



cream 10047 getaria



iceberg 10037 getaria



oasis 10007 getaria



garnet 10046 getaria



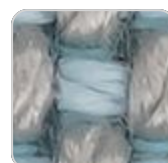
camel 10033 getaria



black 10044 getaria



gallant 10025 getaria



pearl 10006 getaria



anthracite 10043
getaria

VONDOM



blue 10024 getaria



oversea 10002 getaria



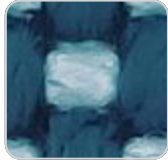
gray 10042 getaria



ocean 10023 getaria



white 10041 getaria



emerald 10016
getaria



niord 10015 getaria



brown 10050 getaria



moon 10040 getaria



dune 10009 getaria



tortora 10048 getaria



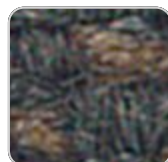
terra 10039 getaria

Group 2. Premium high density 100% acrylic fabric, available in a wide range of colors.

BAIONA Ref. 66500CO



clay 10106 baiona



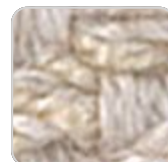
black 10114 baiona



camel 10104 baiona



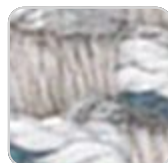
gray 10113 baiona



cream 10103 baiona



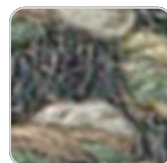
blue 10112 baiona



ocean 10111 baiona



tortora 10102 baiona



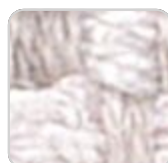
green 10110 baiona



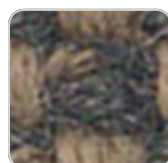
ecru 10101 baiona



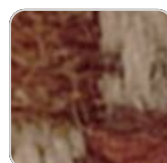
jade 10109 baiona



white 10100 baiona



brown 10108 baiona



garnet 10107 baiona

Group 1C. High density 100% acrylic fabric, which provides a solid feel. It has an

VONDOM

irregular pattern that adds a handcrafted touch.

CALELLA

Ref. 66500CO



blue 10127 calella



jade 10126 calella



clay 10125 calella



mustard 10124 calella



cream 10123 calella



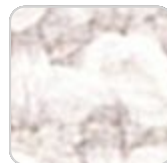
tortora 10122 calella



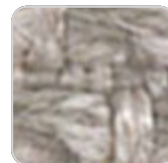
ecru 10121 calella



anthracite 10129
calella



white 10120 calella



gray 10128 calella

Group 1C. PFAS-free 100% acrylic fabric with a rich and unusual texture and an exceptional softness, which enhances the comfort of the furniture.

FISTERRA

Ref. 66500CO



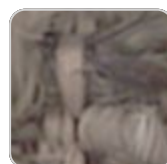
cream 10132 fisterra



white 10130 fisterra



ecru 10131 fisterra



tortora 10135 fisterra



camel 10134 fisterra



mustard 10133
fisterra



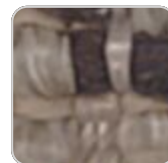
peach 10146 fisterra



clay 10137 fisterra



garnet 10138 fisterra



brown 10136 fisterra



olive 10145 fisterra



jade 10139 fisterra



green 10140 fisterra



ocean 10141 fisterra



blue 10142 fisterra

VONDOM



gray 10143 fisterra



anthracite 10144
fisterra



black 10147 fisterra

Group 1C. 100% acrylic fabric, with a distinctive irregular marbled pattern and a soft feel.

PORTONOVO Ref. 66500CO



ocean 10161
portonovo



cream 10153
portonovo



green 10160
portonovo



tortora 10152
portonovo



jade 10159 portonovo



ecru 10151 portonovo



brown 10158
portonovo



white 10150
portonovo



garnet 10157
portonovo



black 10165
portonovo



clay 10156 portonovo



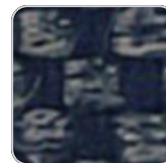
anthracite 10164
portonovo



mustard 10155
portonovo



gray 10163 portonovo



blue 10162 portonovo



camel 10154
portonovo

Group 1A. 100% acrylic fabric, with a flat and simple design, which adapts to any decorative style.

VONDOM

ZUMAIA Ref. 66500CO



blue 10203 zumaia



garnet 10202 zumaia



cream 10201 zumaia



white 10200 zumaia



black 10205 zumaia



green 10204 zumaia

Group 2. Elegant 100% acrylic fabric, with a soft terry, pleasant to the touch and a unique color combination.

SUANCES Ref. 66500CO



gray 10313 suances



mustard 10305
suances



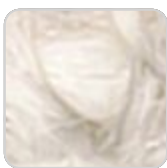
blue 10312 suances



camel 10304 suances



ocean 10311 suances



cream 10303 suances



green 10310 suances



tortora 10302 suances



olive 10317 suances



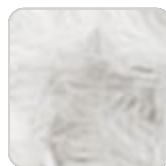
jade 10309 suances



ecu 10301 suances



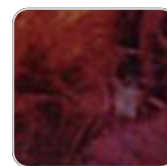
brown 10308 suances



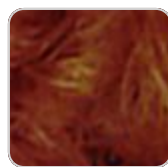
white 10300 suances



peach 10316 suances



garnet 10307 suances



VONDOM

black 10315 suances

clay 10306 suances

anthracite 10314
suances

Group 2. Bocol fabric, which stands out for its warmth and softness, with matching colors that add depth and elegance.

RIBADEO

Ref. 66500CO



ocean 10331 ribadeo



cream 10323 ribadeo



green 10330 ribadeo



tortora 10322 ribadeo



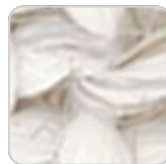
ecru 10321 ribadeo



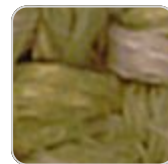
mint 10337 ribadeo



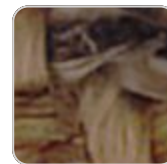
jade 10329 ribadeo



white 10320 ribadeo



olive 10336 ribadeo



brown 10328 ribadeo



peach 10335 ribadeo



garnet 10327 ribadeo



anthracite 10334
ribadeo



clay 10326 ribadeo



gray 10333 ribadeo



mustard 10325
ribadeo



blue 10332 ribadeo



camel 10324 ribadeo

Group 2. Soft fabric with marbled yarns of different thicknesses that create a rich and visually interesting texture. Its Linen look adds a touch of natural style.

LOURO

Ref. 66500CO

VONDOM



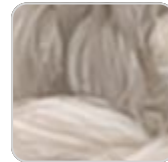
ocean 10351 louro



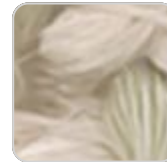
cream 10343 louro



green 10350 louro



tortora 10342 louro



jade 10349 louro



brown 10348 louro



olive 10356 louro



garnet 10347 louro



peach 10355 louro



clay 10346 louro



anthracite 10354 louro



mustard 10345 louro



gray 10353 louro



blue 10352 louro



camel 10344 louro

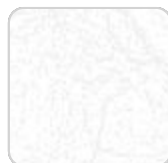
Group 2. Soft and versatile fabric, which presents a neutral base color that makes it easy to combine with different colors and fabrics.

ALTEA

Ref. 66500CO



tortora 1102 altea



white 1100 altea



camel 1120 altea



clay 1122 altea



garnet 1106 altea



brown 1104 altea



jade 1125 altea



ocean 1123 altea



gray 1101 altea



anthracite 1124 altea



black 1105 altea

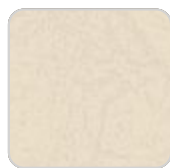
Group 1A. Soft outdoor fabric with leather-like texture.

VONDOM

NAUTIC Ref. 66500CO



ecru 1111 altea



cream 1103 altea



blue 1114 altea

Soft leather like fabric suitable for indoor and outdoor use. Standard option for upholstery.

AROUSA Ref. 66500CO



tortora 1209 arousa



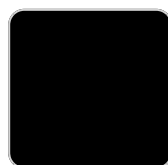
camel 1230 arousa



clay 1231 arousa



brown 1214 arousa



jade 1235 arousa



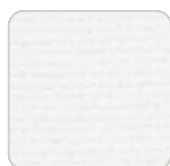
gray 1208 arousa

Group 1B. Soft outdoor fabric with shiny finish.

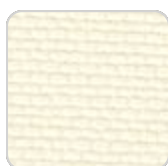
SILVERTEX Ref. 66500CO



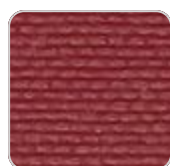
ecru 1221 arousa



white 1219 arousa



cream 1220 arousa



garnet 1223 arousa



blue 1222 arousa

VONDOM



anthracite 1210
arousa

Vinyl fabric suitable for indoor and outdoor use. Special option for upholstery.

