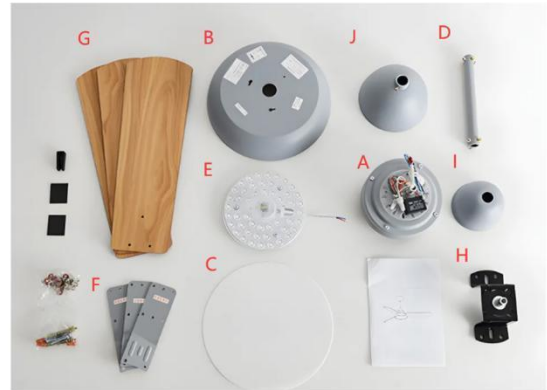


Assembly Instructions

Package Contents

Part	Description	Quantity
A	Motor	1 pc.
B	Lamp Panel	1 pc.
C	Acrylic Lamp Cover	1 pc.
D	Light Pole	1 pc.
E	Light Source	1 pc.
F	Fan Small Insert	3 pcs.
G	Fan Blade	3 pcs.
H	Hanging Frame	1 pc.
I	Big Light Chassis	1 pc.
J	Small Light Chassis	1 pc.



Steps For Assembling The Lamp Body

STEP 1

Assemble the Fan Small Insert(F) and Fan Blade(G), screw in the screws, put on the washers, and then screw in the nuts to fix them. Pay attention to the direction of the grooves.



STEP 2

As shown in the video, unscrew the screws on the Motor(A). Install the fan blade and tighten the screws (the groove side faces down).

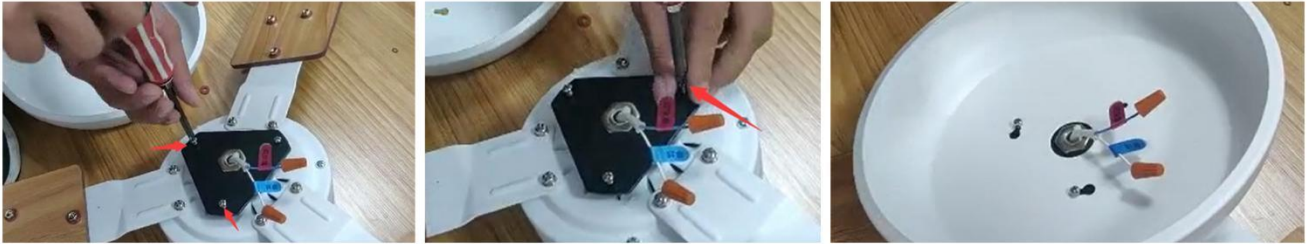


STEP 3

Loosen two screws and remove one screw.

Pass the motor wires through the Lamp Panel(B) and install the Lamp Panel(B).

Screw in and tighten other screws.



STEP 4

Unscrew the wire cap.

The Light Source(E) wire and the Motor(A) wire are connected and the wires are not distinguished.

Screw in the wire cap to fix it or wrap it with electrical tape.

Install the Light Source(E) and Acrylic Lamp Cover(C).



STEP 5

Remove the pins from the Light Pole(D) and loosen the screws.

Wires passing through Light Pole(D).

Install the Light Pole(D) and insert the pins and screws.

Tighten the screws to secure.



STEP 6

Install Small Light Chassis(J).

Loosen the screws of the Big Light Chassis(I) and install the Big Light Chassis(I).



STEP 7

Mark the drilling position on ceiling with the help of the Hanging Frame(F).
Drill holes on the marks and stick the expansion anchors into the holes.
Mount the Hanging Frame(F) on the wall.

STEP 8

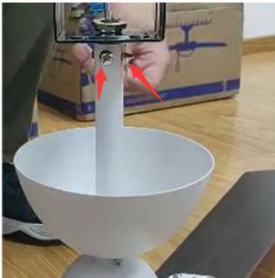
The motor wires pass through the middle of the Hanging Frame(F).
Connect one supply wire with one of the two wire strands from fixture.
Connect the other supply wire with the other wire strand from fixture.



Warm Reminder: The yellow and green wires are ground wires. If there is a ground wire at home, just connect it. If there is no ground wire, you can ignore it and do not connect it. It will not affect the installation and use.

STEP 9

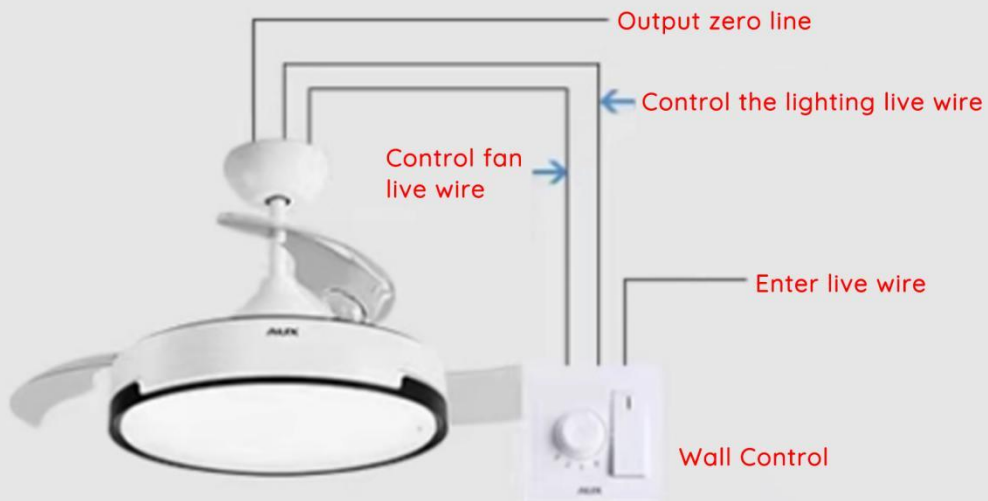
Fix the Light Pole(D) and Hanging Frame(F).



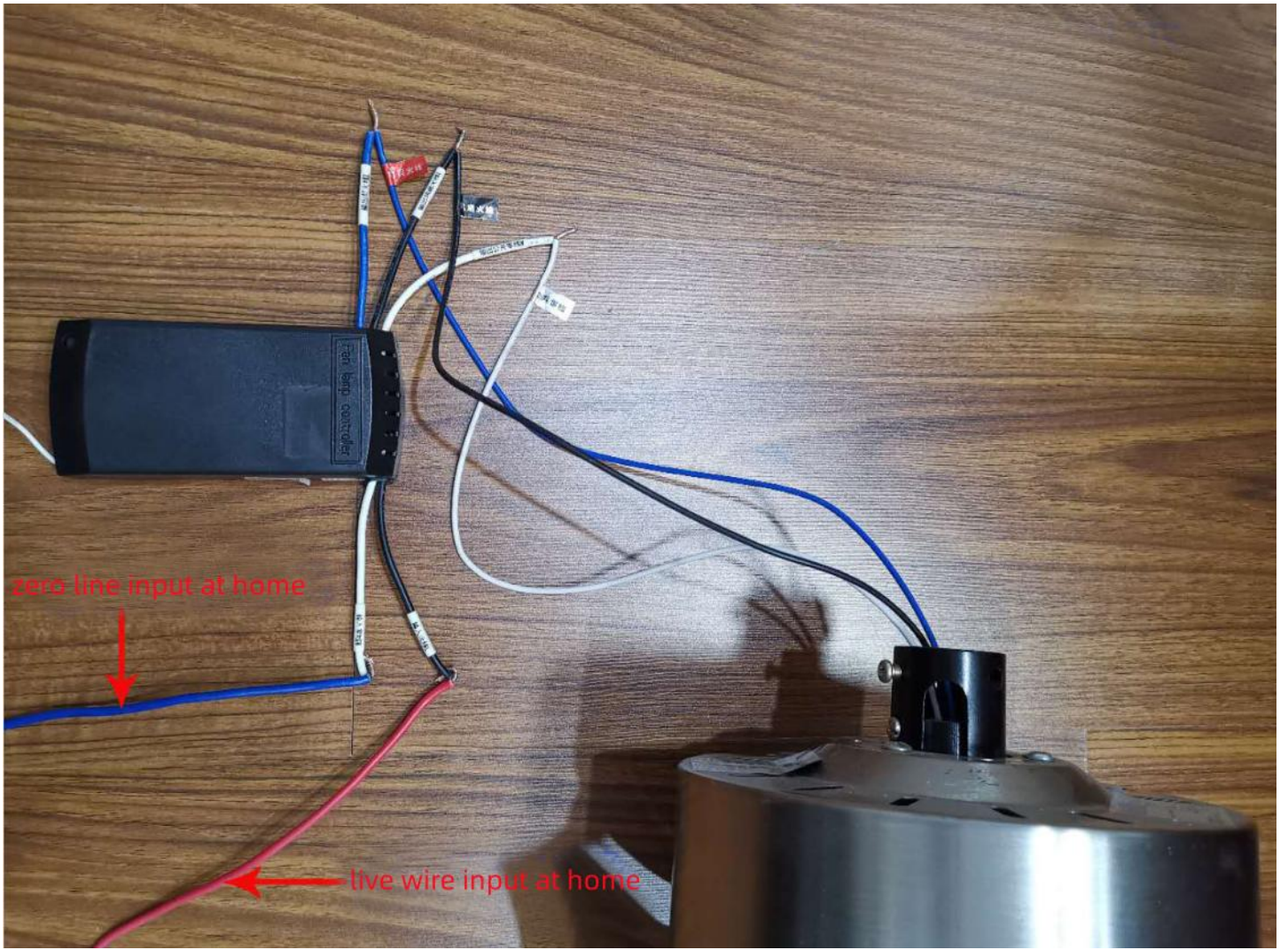
Wall Control Installation Steps

Note: Familiarize yourself with the wiring diagram of the wall control first

Wall Control Wiring Diagram



2 Live 1 Zero (Need to add a live line)

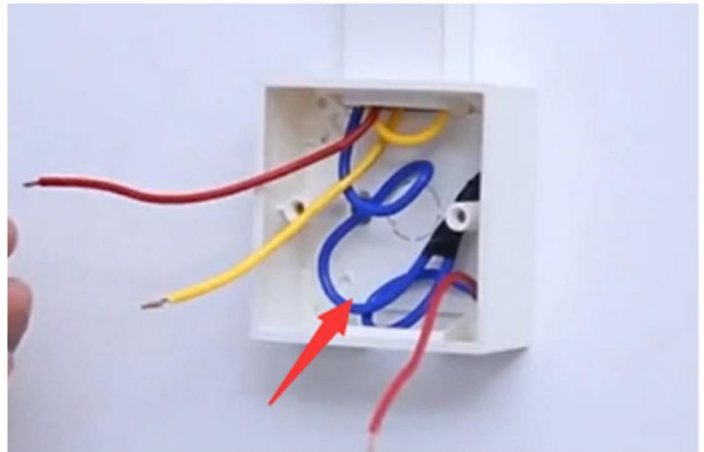
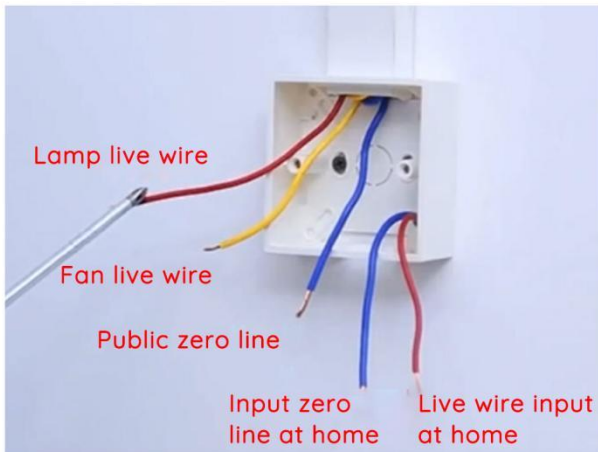


Wall Control Wiring Diagram



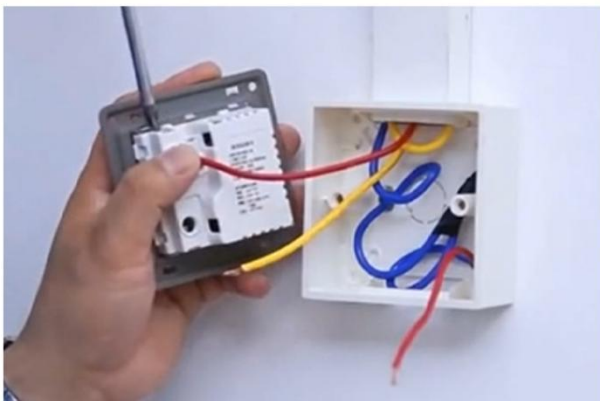
STEP 1

First check whether the appearance and function of the wall control switch are intact. Connect the input zero line at home to the public zero line, and then wrap it with electrical tape.



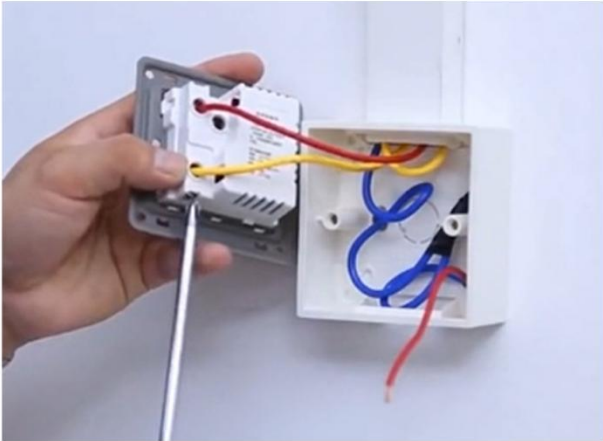
STEP 2

Connect the live wire of the lamp to the L1 terminal.



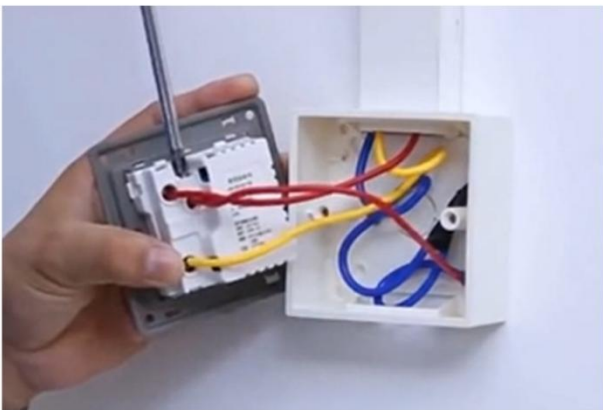
STEP 3

Connect the fan live wire to the L2 terminal block.



STEP 4

Connect the home input live wire to the L terminal.



STEP 5

Check whether all wires are connected properly, and finally install the switch panel. Check if the switch is working properly.



Your fixture is now assembled and ready to use.