

User manual and safety instructions

User manual and safety instructions

Assembly

Unpack the chimney and accessories.

Check the contents for completeness and / or any damage suffered during transport.

Keep children and animals away from packaging.

Table/ ground/ wall fireplace

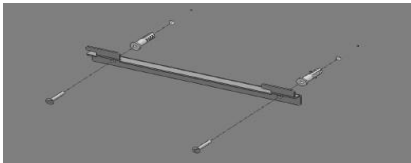
The chimney should be installed only on a solid floor of non-flammable material

1. Assemble the chimneys according to the instructions
2. Place the burner in the combustion chamber of the chimney body.

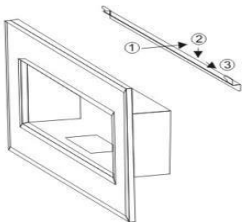
Fixing to the wall

The chimney must be fixed on a solid and non-flammable wall:

1. Mount the chimney in full according to the instruction manual.
2. Mount the wall bar with screwdrivers, screws and dowels.



3. Attach the body of the fireplace to the riser following the arrows:

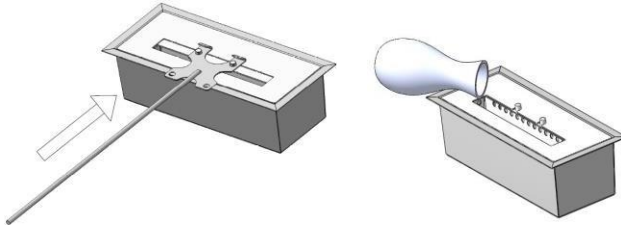


4. Place the burner in the appropriate space of the chimney body.

User manual and safety instructions

How to use:

Step 1: Adjust the sliding cover for its wide opening. Fill the burner with ethanol, carefully watch until you reach below the level of the "Max" line avoid spills.



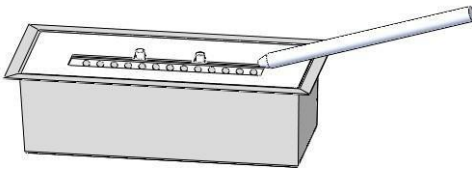
ATTENTION:

Please make sure that the stones or logs do not cover the opening in case of accidental spillage.

The leaked bioethanol should be immediately removed with an absorbent cloth and cleaned with water to prevent ignition outside the burner tank.

The fuel must be kept at a safe distance (min. 1 M / 40 inches) from the fireplace. Do not place fuel in front of the chimney.

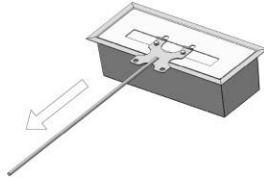
Step 2: Use a long match or a long lighter to light. When the ignition occurs, maintain a safe distance.



Attention:

The fuel will burn at low flame at first. Please allow 10-15 minutes to reach the optimum temperature and flame height. **If the flame is too high, please use the ring to adjust the flame: place the ring in the burner.**

Shutdown

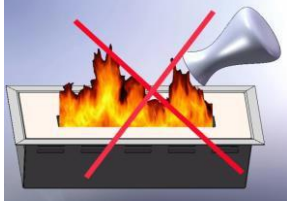


ATTENTION: never extinguish the flame with water!!

1. Let the fuel be consumed completely, if possible. This prevents the alcohol left in the burner from causing explosions when you turn the burner back on.
2. If you want to turn off the fire before the fuel is completely burned, please use the cover to turn off completely cover the burner slot with a fast movement, to completely turn off the flame.
3. In case the flame does not go out immediately, repeat the above instructions until the flame is completely extinguished.
- 4. Do not touch the chimney during cooling. Please allow at least 15 minutes to cool before touching the chimney after the flame goes out.**
5. It is strongly recommended to keep a Class B fire extinguisher at hand near the device in case of fire.

Attention: Do not fill the burner when the chimney is running or still hot. Let the burner cool down for at least 15 minutes.

User manual and safety instructions



Cleaning:

1. Burner surfaces should be cleaned regularly. Use hot water and dishwashing detergent.
2. Stains are removed with a soft cloth and a mixture of warm water and a small amount of cleaning liquid (ph-neutral). It is recommended to clean stainless steel objects at regular intervals to avoid contamination.

ATTENTION:

Never use aggressive chemicals or abrasive sponges, it could ruin the surface of the chimney.

The manufacturer may not be responsible for improper cleaning and maintenance of the product.

SAFETY INSTRUCTIONS:

1. When burning ethanol releases water vapor and carbon dioxide.
2. **Never leave the fire lit unattended.**
3. In a house of normal construction, which is not with sealed shutters, an adequate supply of oxidizing air and ventilation is provided through infiltration. The chimney should not be used in a small room where there is less than 44m³ (1550ft³) per 1000 BTU (considering the maximum adjustment of the burner).
4. Do not use the bio fireplace in the bathroom or bedroom or any small room, childrens bedroom.

Manuale d'uso e istruzioni di sicurezza

ATTENTION:

1. Fireplace and burner will warm up during operation. Do not touch the chimney during cooling. Please allow at least 15 minutes for it to cool down before you touch it on a flame off.
2. **Danger of burns.** Do not use ethanol fireplace without Assembly completed.
3. **Never** add ethanol to a hot flame or burner, wait at least 15 minutes after the flame is extinguished.
4. **Do not** put any flammable liquid at 1 m/ 40 inches near the chimney.. A safe distance of at least 2 m/80 inches from each open window.
5. **Do not** put it under hanging objects.
6. **Do not** smoke while handling.
7. **Facilitate air circulation where the chimney is lit.**

ATTENTION:

1. Risk of explosion
 - i. **Never** use fuel other than bioethanol, do not use gasoline
 - ii. **Never** use in places where gas and gas vapors are present
 - iii. **Do not** store or transport fuel in a container other than metal or plastic that is permitted under the chemicals and containers regulations of 2001 and in original containers of the product itself.
 - iv. Never stow the fuel near the burner.
2. Never use the appliance to boil water or heat food.
3. While using keep children away from the burner.
4. Risk of indoor air pollution-use only in well-ventilated areas with open doors. Do not obstruct the flow of air to the burner by stacking logs over the burner, but only around and do not clog the burner in any other way or with any other material. People with respiratory problems should consult a doctor before using the fireplace..

Guarantee:

1. Our fireplaces are guaranteed 1 year, parts and labor. Warranty starts from the date of purchase.
2. The warranty will be applied upon presentation of a dated receipt and the money is strictly limited to factory service repair of the part or parts that are found to be defective.
3. Installation costs will not be refunded in any case
4. The manufacturer cannot be held responsible for any incidental or consequential defects, for goods or persons.
5. The warranty does not apply if the devices have been subjected to abnormal use or if used in conditions other than those intended.
6. The warranty does not apply in case of deterioration or accident due to negligence, damage caused by failure to maintain and repair the device or resulting from an alteration of the material.