

WALL CLOCK

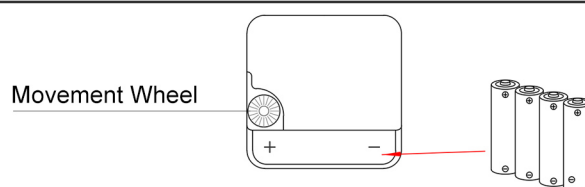
Assembly Instruction

- Do not throw away packing materials until assembly is complete for small parts may come loose inside the carton during shipment. If parts are missing, please contact us.
- Assemble this item on a soft surface, such as carpet to protect the finish.
- During assembly, keep any small part out of reach of children as they may be fatal if swallowed or inhaled. Keep plastic packing bags out of reach of children to avoid any potential danger, such as suffocation.
- Avoid sharp objects and corrosive chemicals to prevent damage to the product or bodily injury.
- Clean with damp cloth. To protect the finish, avoid use chemicals and household cleaners.

Step 1

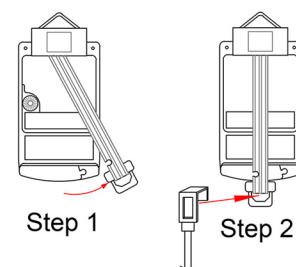
Battery Installation:

1. Battery selection: AA cell/battery (general size: diameter 14mm, height 49mm). Please use carbon dry battery (R6P). Alkaline battery (LR6) or rechargeable battery is not recommended.
2. When unpacking and taking out the clock, do not directly buckle the clock front upside down on the ground or table, as it is easy to deform the pointer and damage the movement. Please check whether the pointer is deformed: it can be used normally without deformation or crossing. Place the battery according to the "-" "+" direction of the battery slot on the back, as shown in the figure below. Last, remove the pointer protective cover, and adjust it to the local time with the movement wheel.



Battery Installation for Clock with Pendulum:

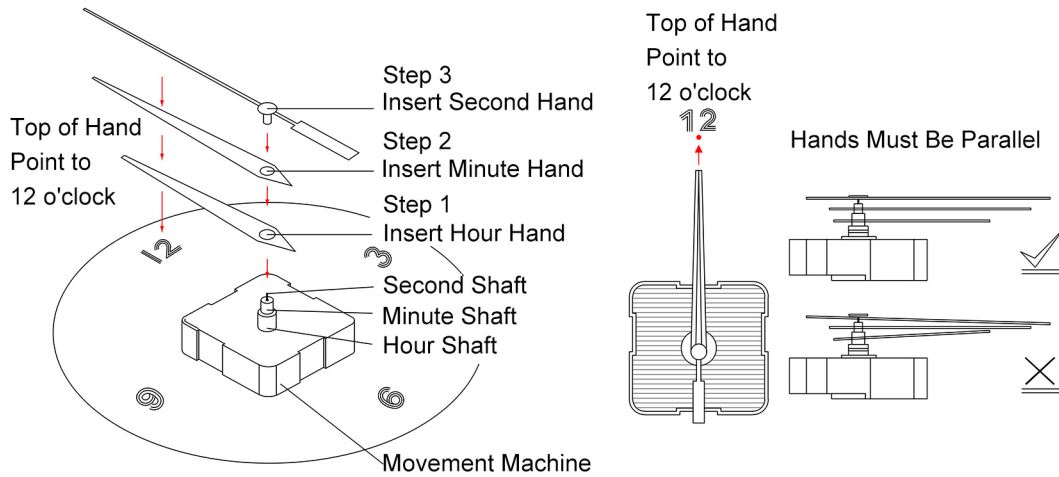
1. Manually remove the buckle on the back of the wall clock. See the right figure for specific operation.
2. Install battery as above mentioned.
3. Then place the clock pendulum in the hanging hole of the pendulum. See the right figure for specific operation.



Step 2

Time calibration:

1. The movement does not move: the gear on the back of the movement does not rotate, check the positive and negative positions of the battery, and place the battery referring to the "-" "+" direction marked in the battery slot.
2. The pointers stop and go, tap once run again:
 - (1) It may be that the fixing nut of the spindle is too tight. Please remove the pointer carefully and loosen slightly the nut of the spindle. Then install the pointer and adjust it to the local time with the movement wheel.
 - (2) It may be that the second hand is too tight inserted that its interface rubs against the shaft, causing movement dysfunction. Method: Pull out the second hand and check the time after running without it for 3 days. If the displayed time is accurate it indicates no problem with the movement. Then install the second hand expect over-tight.
 - (3) Running time fast: For example, when it is 12 o'clock, the hour hand is in the direction of 12 but the minute hand is in the direction of 1. Please put the clock front upwards and do not reverse it. Adjust all the hands to the 11 direction, then adjust the hour hand to the direction of 12 with the movement wheel and gently turn the minute and second hands to the 12 direction by hand. Finally, install the battery and adjust it to the local time with the movement wheel.
 - (4) Running pointers stuck: If the pointer is deformed and overlapped, gently adjust it by hand. Make sure to keep each pointer balanced and straight without crossing, then adjust to the exact time with the movement wheel.

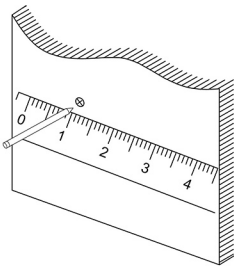


Pointer Replacement:

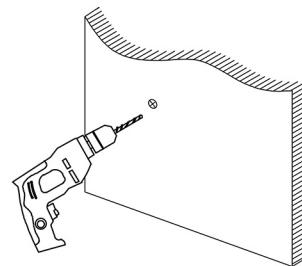
1. Carefully remove the original pointer and prepare a new pointer.
2. First insert the hour hand, with the pointer pointing at 12 o'clock. Then insert the minute hand, with the pointer pointing at 12 o'clock, and finally insert the second hand (except for products without second hand). Gently insert the second hand 1-2mm. Do not press the pointer too hard. As shown in the figure above.
3. Each pointer shall be balanced, straight and without crossing.
4. If has a cover on the dial, please make sure it does not contact the second hand to affect running.
5. Use the movement wheel to adjust to the local time.

Step 4

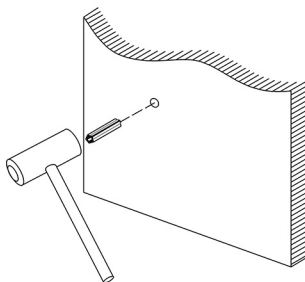
Wall Clock Installation:



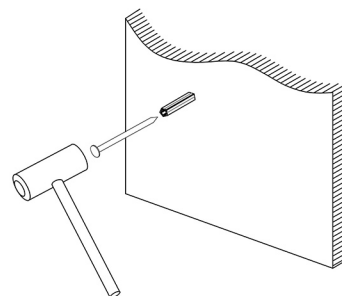
Step 1: Mark the hole position on the wall with a pen.



Step 2: Punch holes at the marked positions with an electric drill, the depth of which is the length of the expanded rubber cap.



Step 3: Plug the expansion rubber cap into the hole.



Step 4: Nail the screw into the expanded rubber cap, with the nail head reserved for 5mm, and hang the product back hook or hanging chain on the screw to finish.