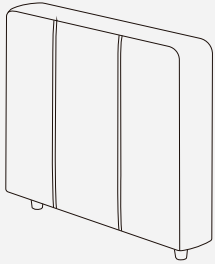


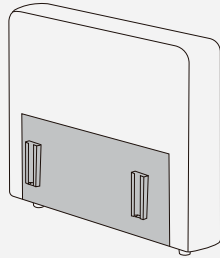
CARTON A PART LIST

A Left Armrest



x1

B Right Armrest



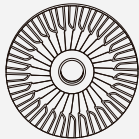
x1

1 Plastic Leg



x4

2 Plastic Washer

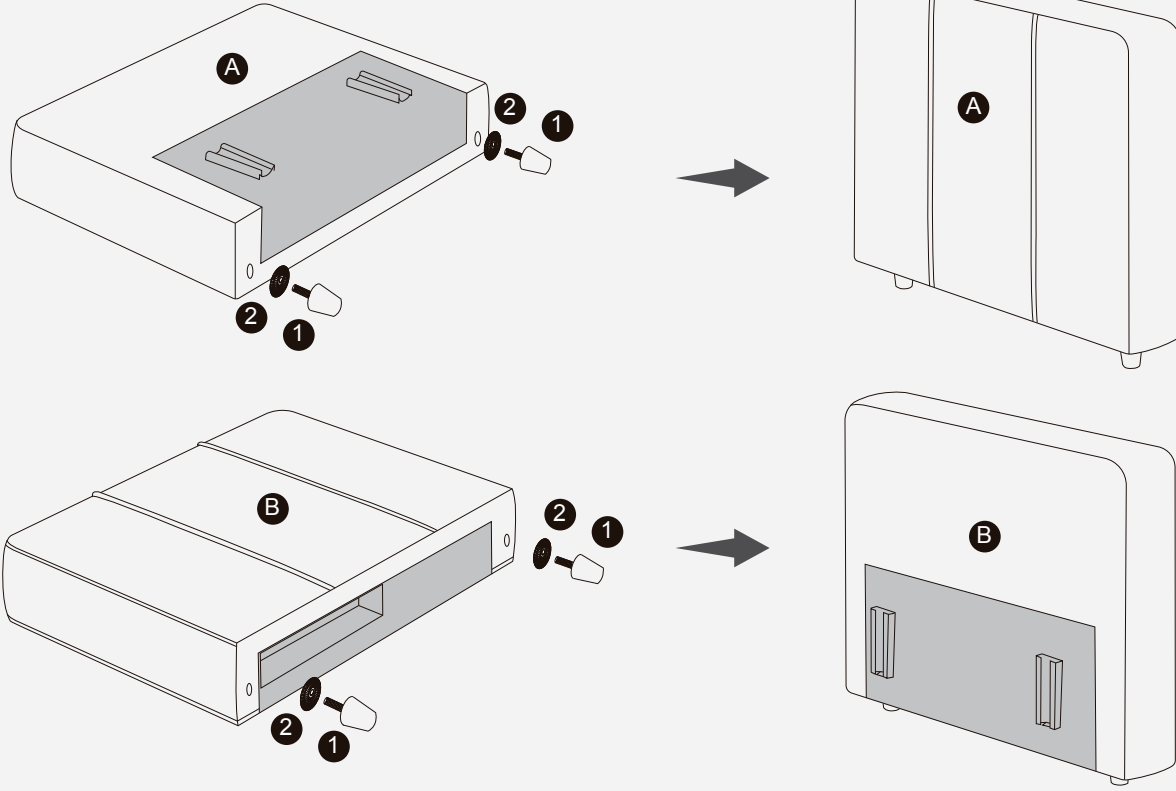


x4

CARTON A ASSEMBLY

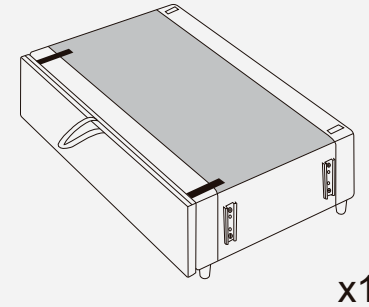
Armrests are in carton A, Remove all parts from the carton A ,
Place them on protected surface or carpet.

Step1: Install plastic sofa leg



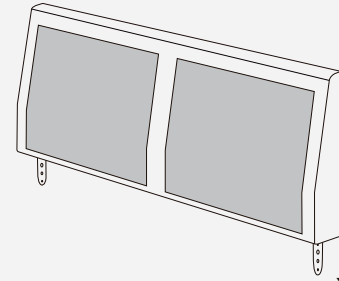
CARTON B PART LIST

C Long Seat Frame



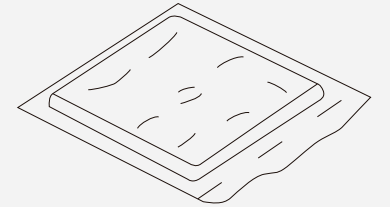
x1

D Long Back Frame



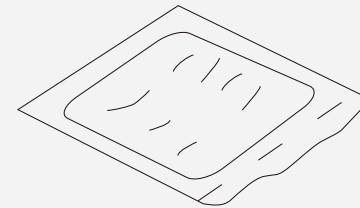
x1

E Seat Cushion



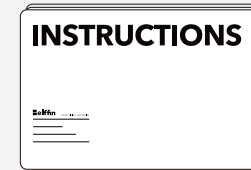
x2

F Back Pillow



x2

G Assembly Instructions

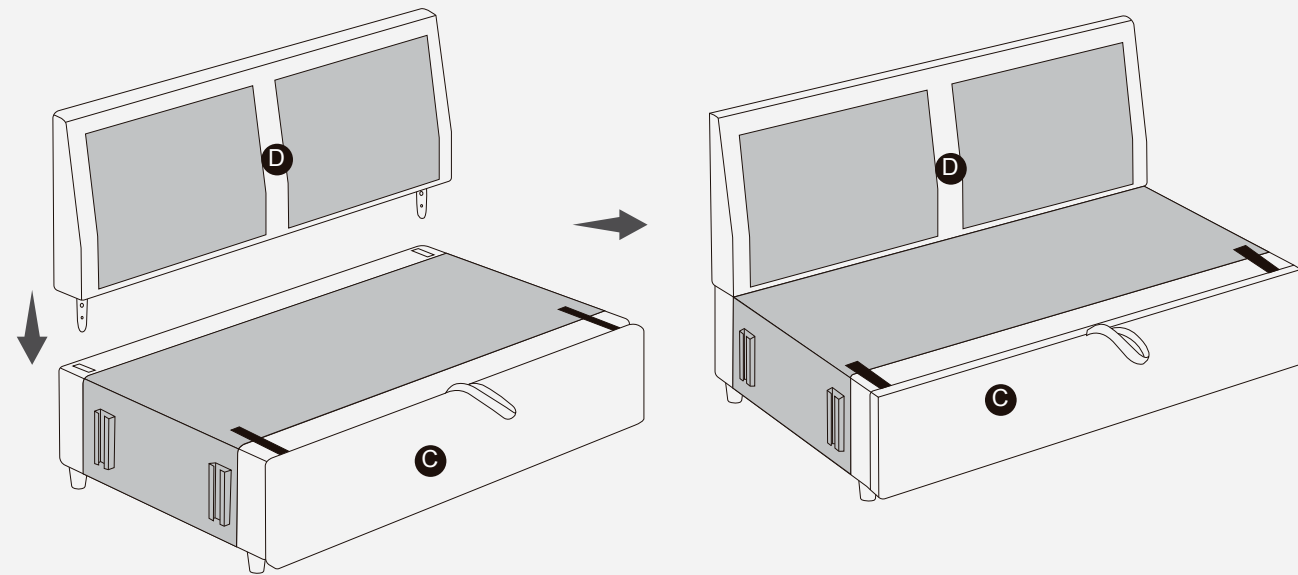


x1

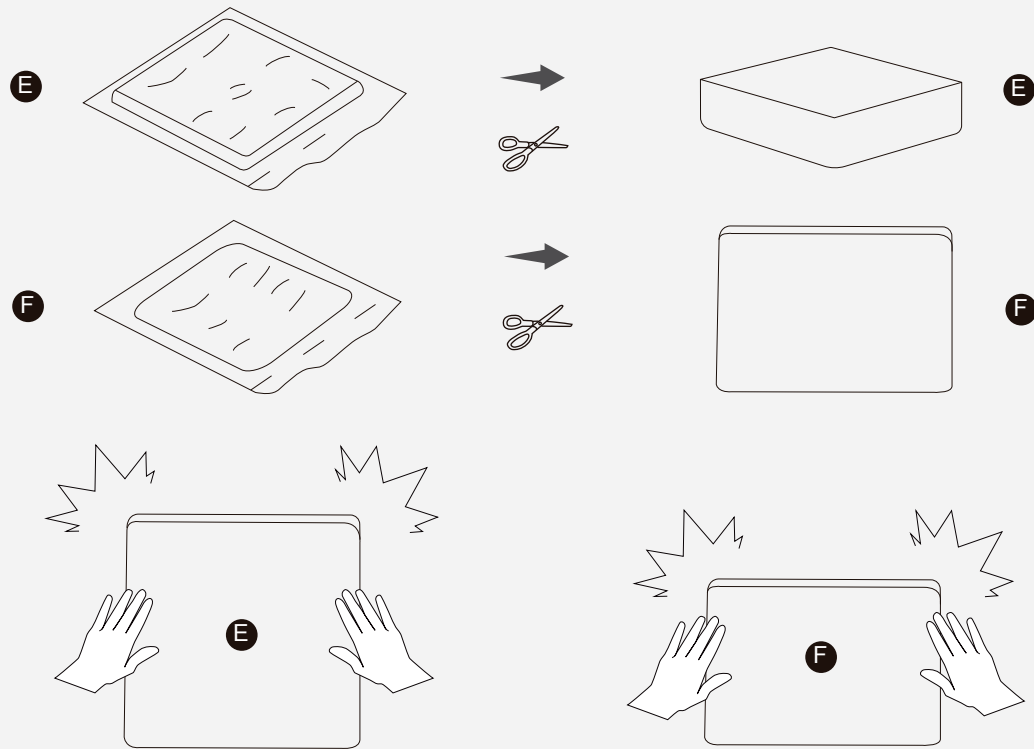
CARTON B ASSEMBLY

Long seat module is in carton B, Remove all parts from the carton B , Place them on protected surface or carpet.

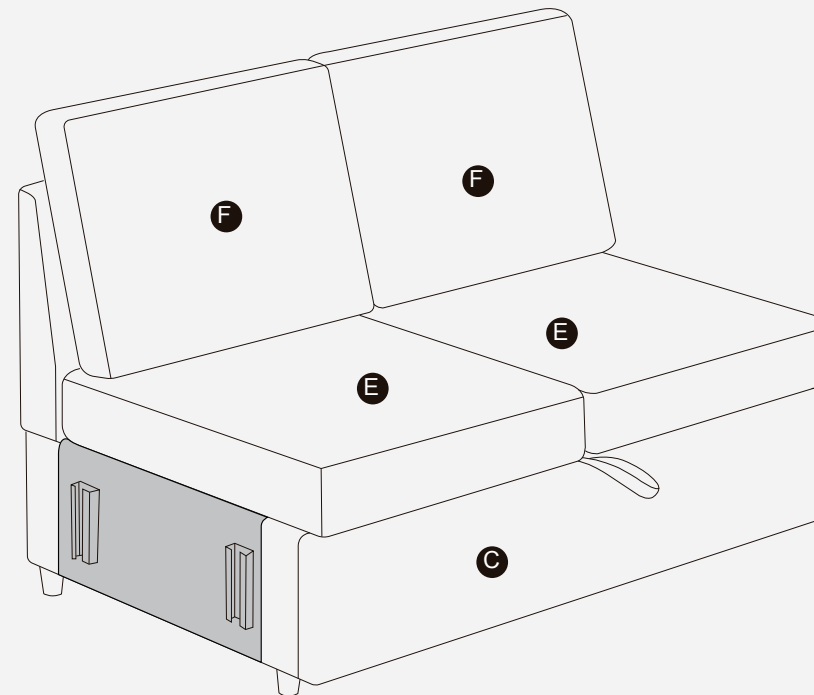
Step1: Install long back frame to long back frame



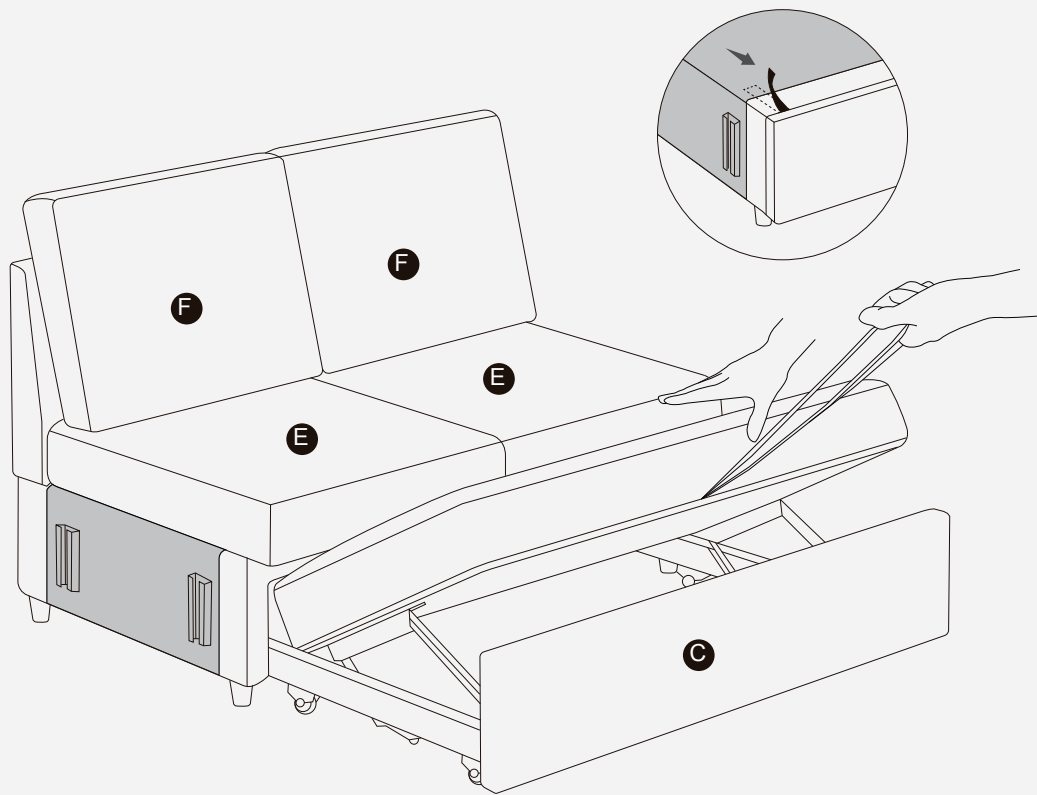
Step2: Cut open the compression pack and pat until fluffy



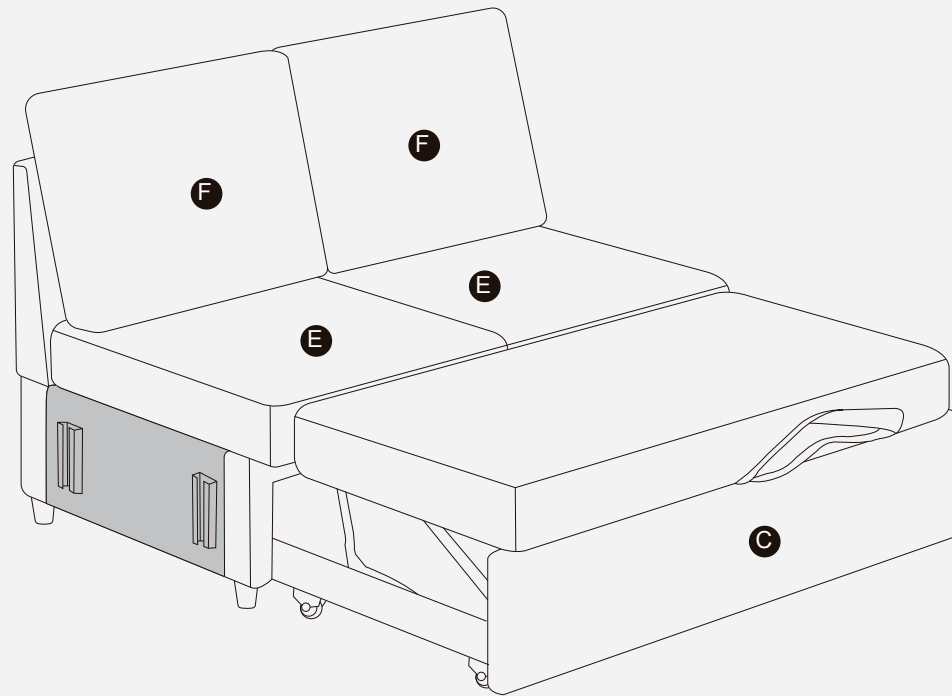
Step3:



Step4:

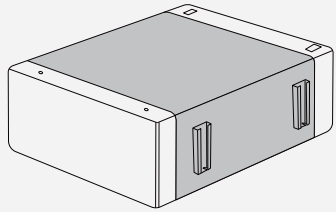


Step5:



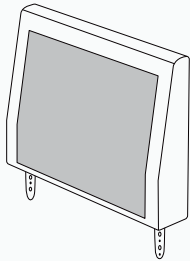
CARTON C PART LIST

G Single Seat Frame



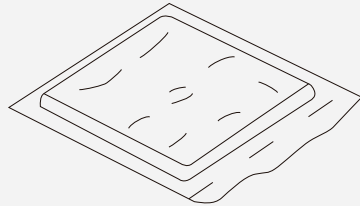
x1

H Single Back Frame



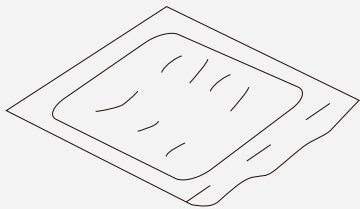
x1

E Seat Cushion



x1

F Back Pillow



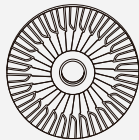
x1

1 Plastic Leg



x4

2 Plastic Washer

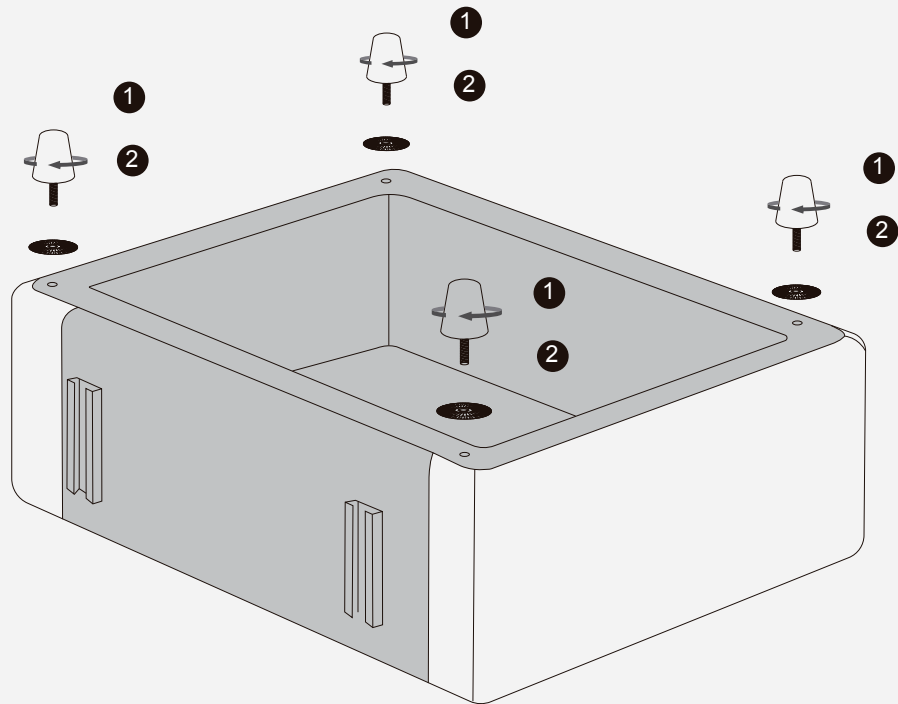


x4

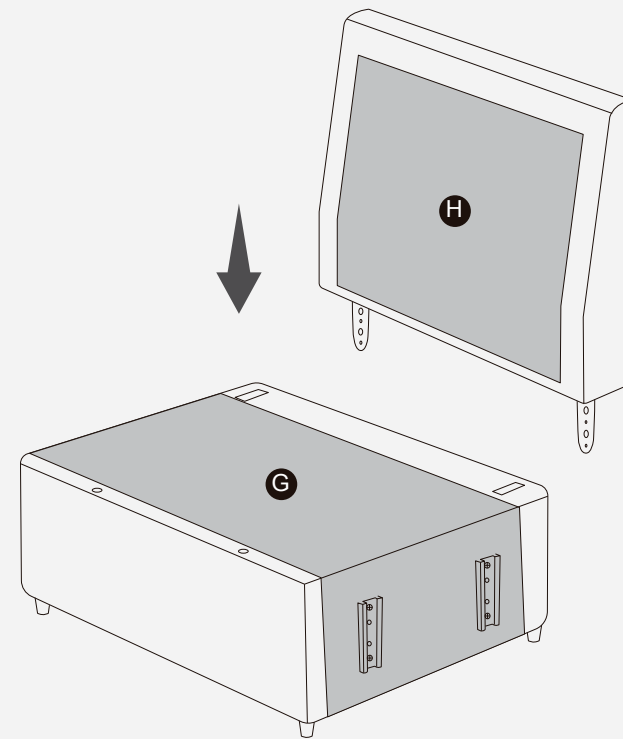
CARTON C ASSEMBLY

Single seat module is in carton C, Remove all parts from the carton C ,
Place them on protected surface or carpet.

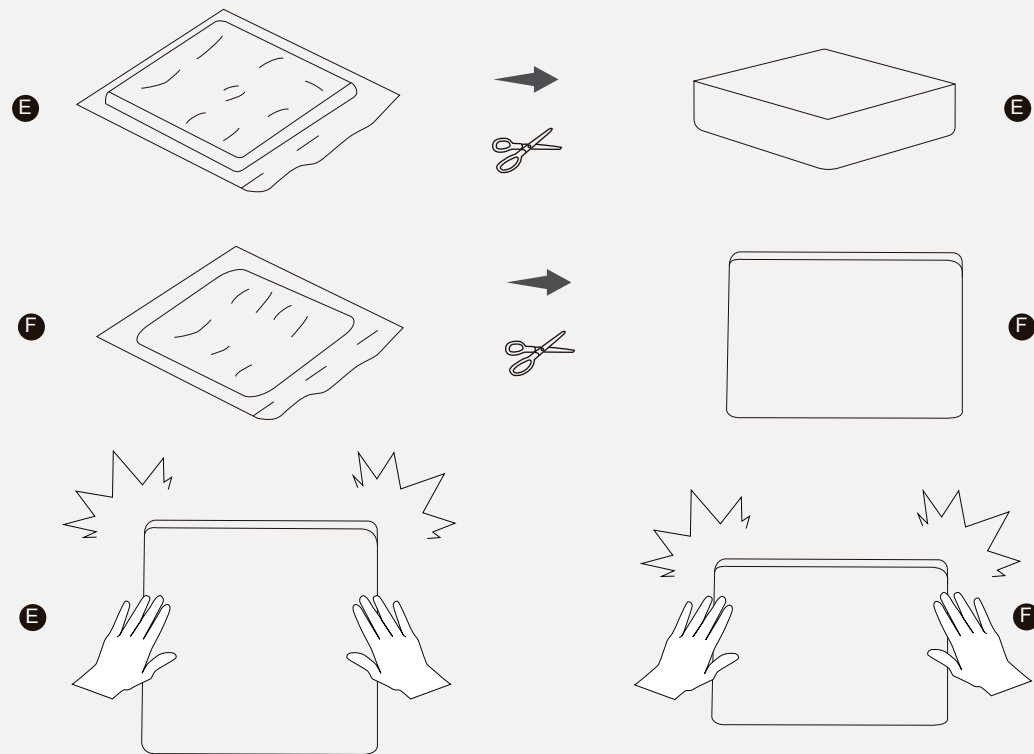
Step1: Install Plastic Sofa Leg



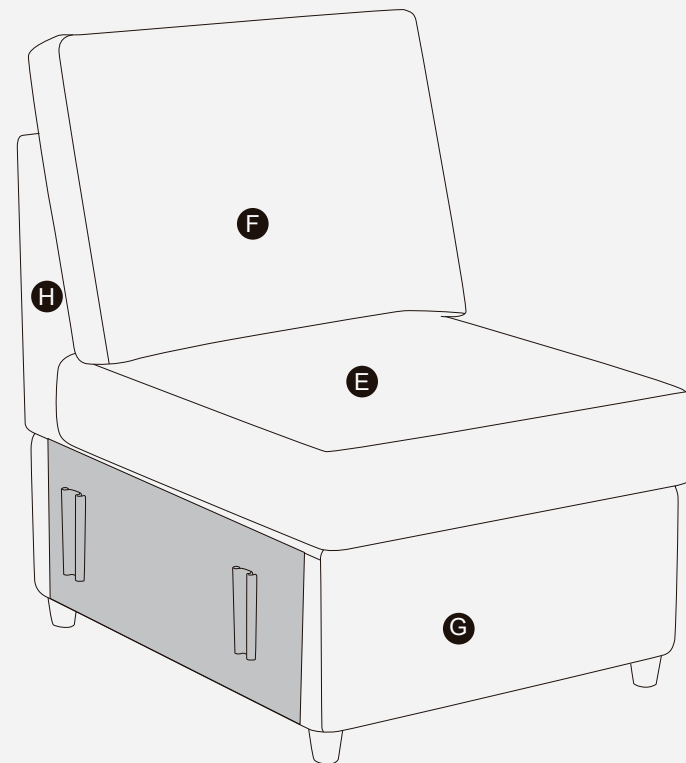
Step2: Install single back frame to single seat frame



Step3:

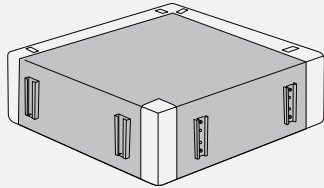


Step4:



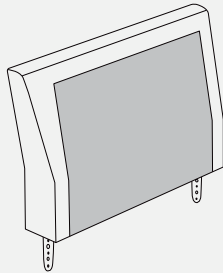
CARTON D PART LIST

J Corner Seat Frame



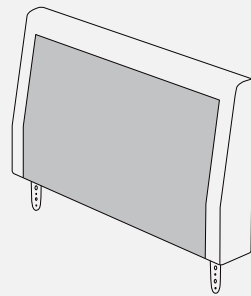
x1

K Corner Short Back Frame



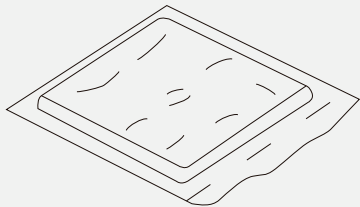
x1

L Corner Long Back Frame



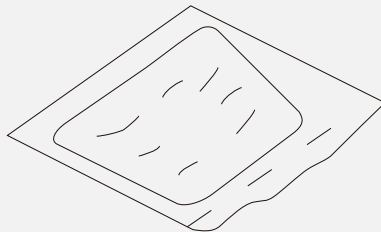
x1

T Corner Seat Cushion



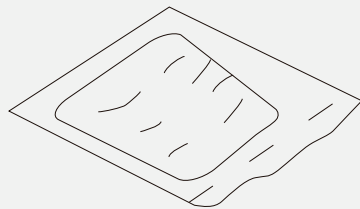
x1

M Long Corner Back Pillow



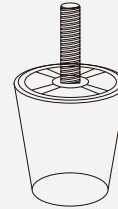
x1

N Small Corner Back Pillow



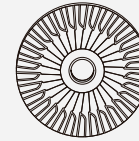
x1

1 Plastic Leg



x4

2 Plastic Washer

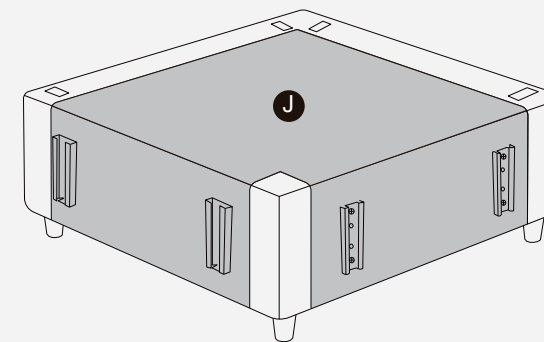
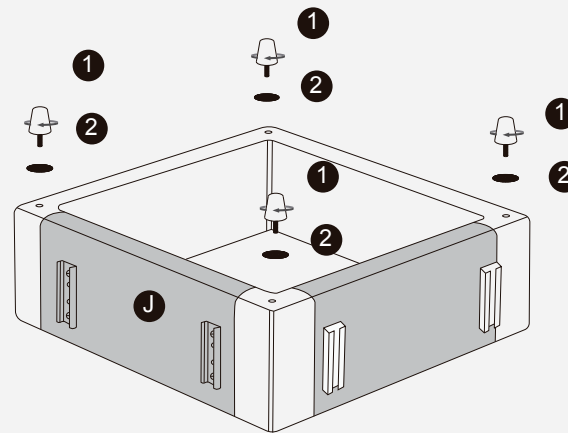


x4

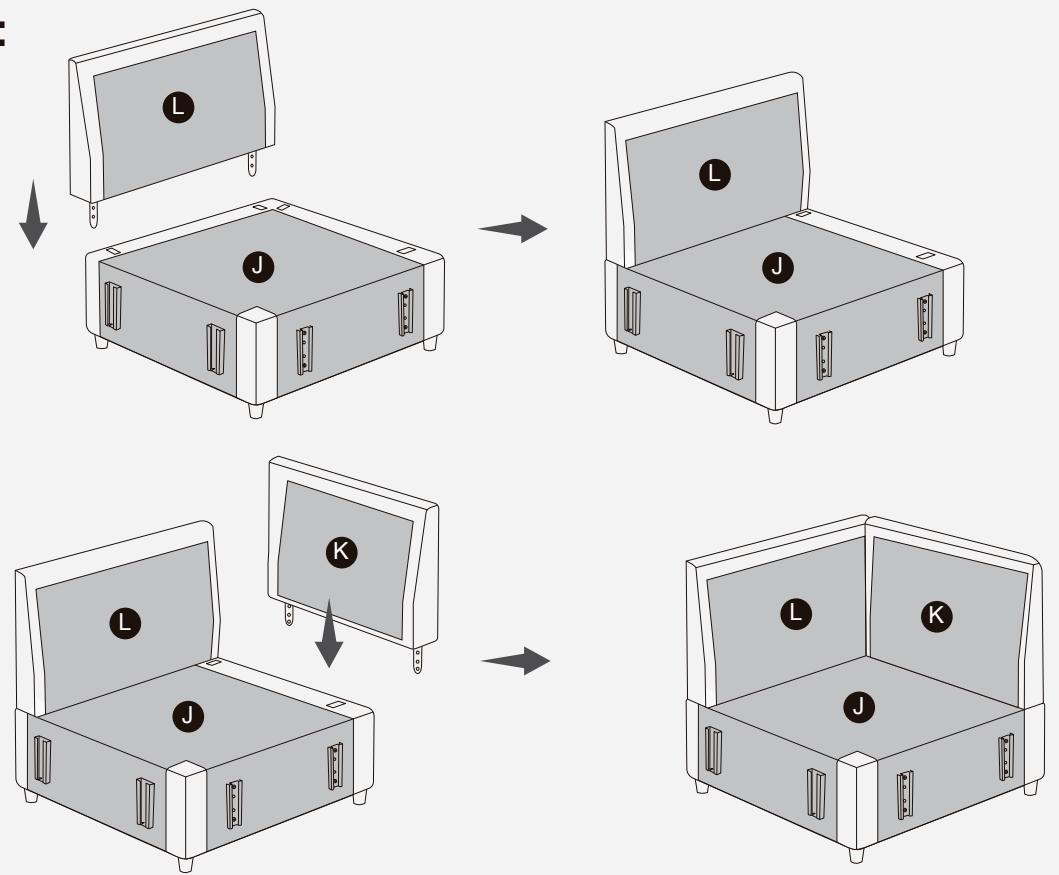
CARTON D ASSEMBLY

Corner seat module is in carton D, Remove all parts from the carton D, Place them on protected surface or carpet.

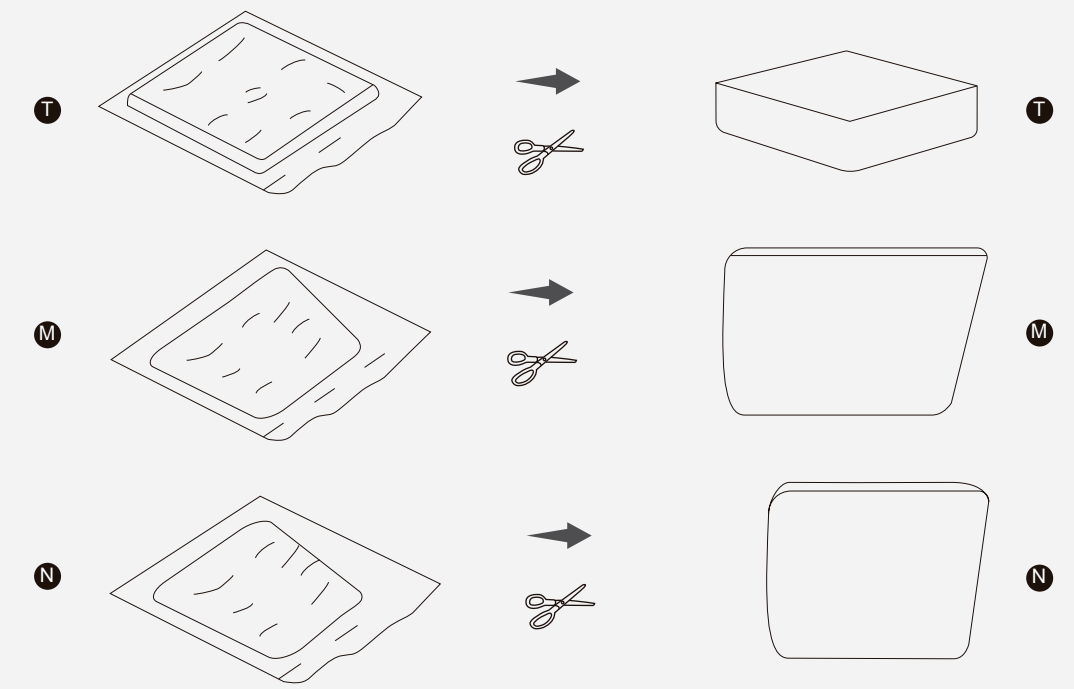
Step1: Install Plastic Sofa Leg



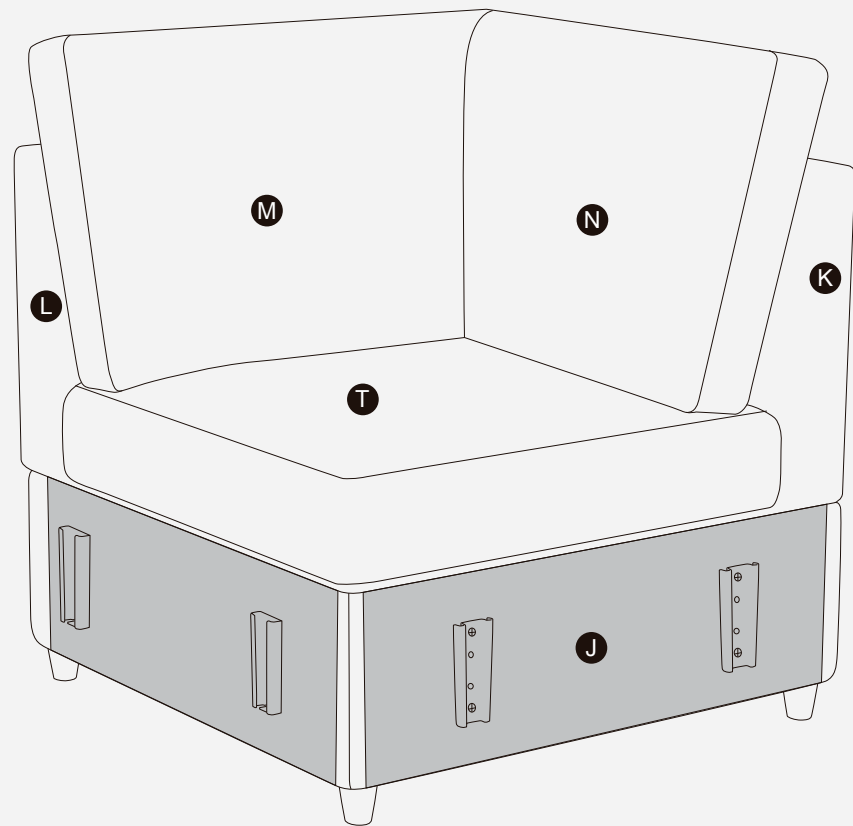
Step2:



Step3: Cut open the compression pack and pat until fluffy

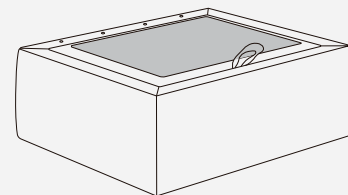


Step4:



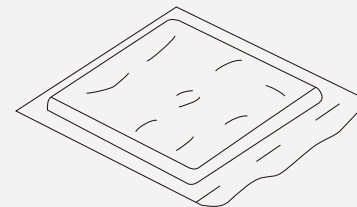
CARTON E PART LIST

P Ottoman



x1

S Seat Cushion



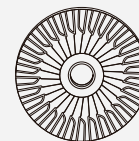
x1

1 Plastic Leg



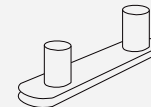
x4

2 Plastic Washer



x4

3 U-shape connector

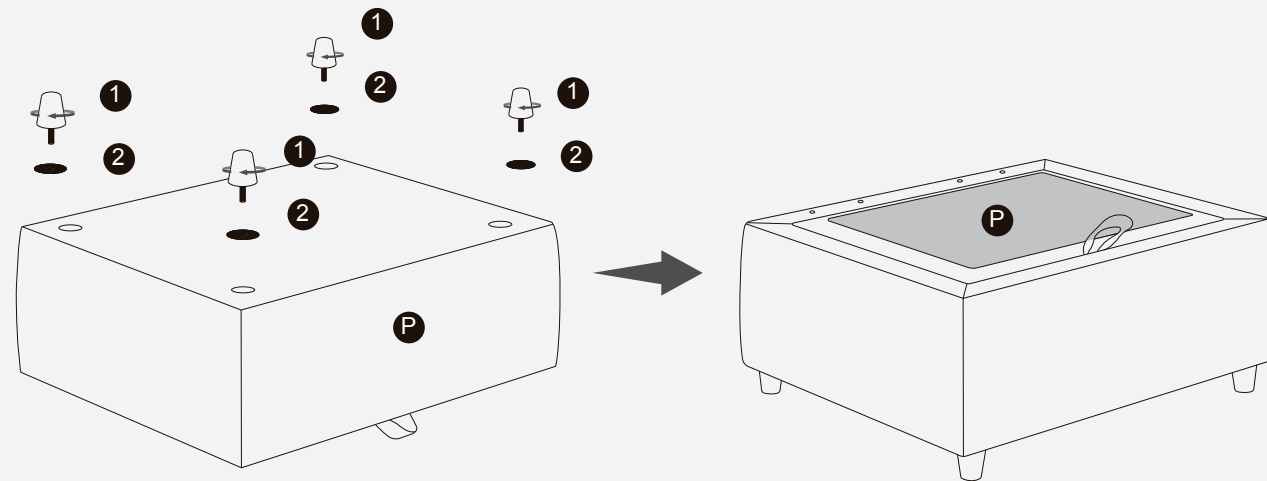


x2

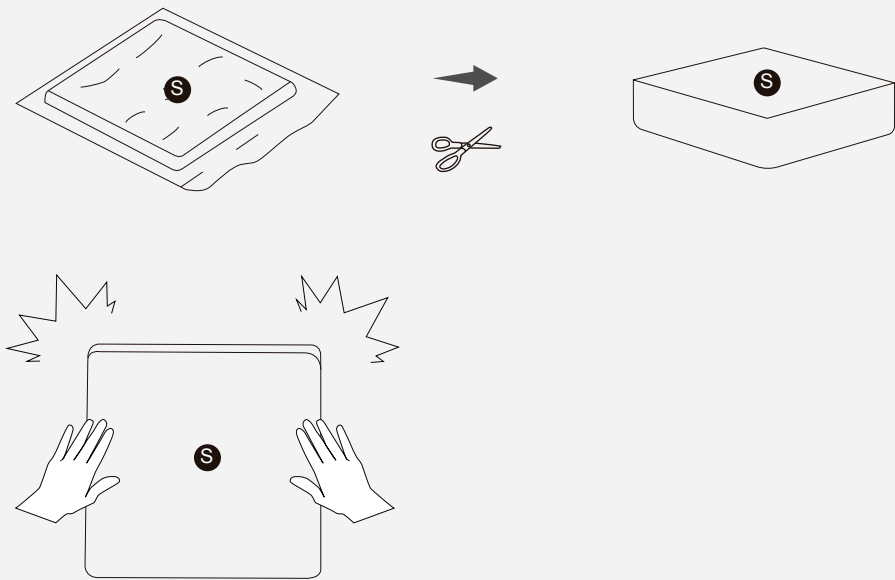
CARTON E ASSEMBLY

Storage seat module is in carton E, Remove all parts from the carton E
Place them on protected surface or carpet.

Step1:



Step2: Cut open the compression pack and pat until fluffy

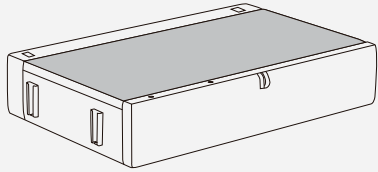


Step3:



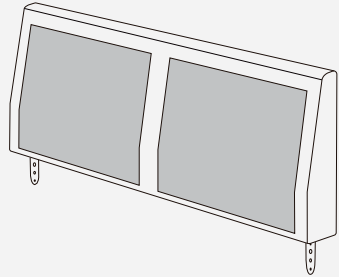
CARTON F PART LIST

Q Long storage seat Frame



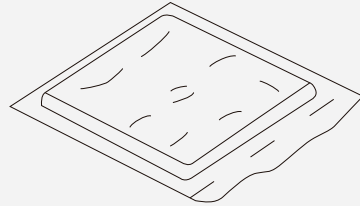
x1

D Long Back Frame



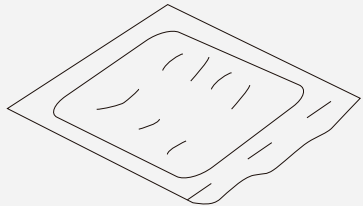
x1

E Seat Cushion



x2

F Back Pillow



x2

1 Plastic Leg

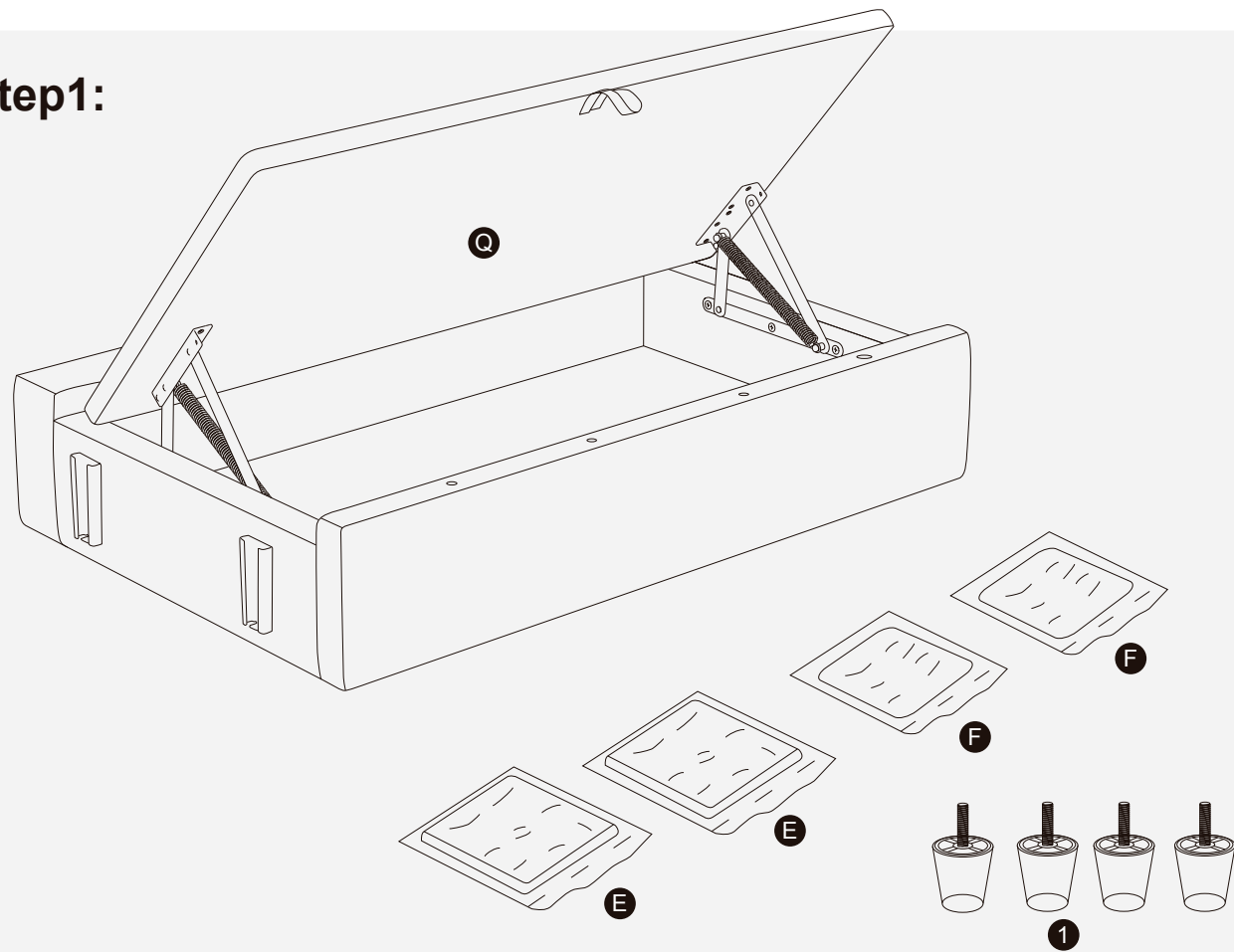


x4

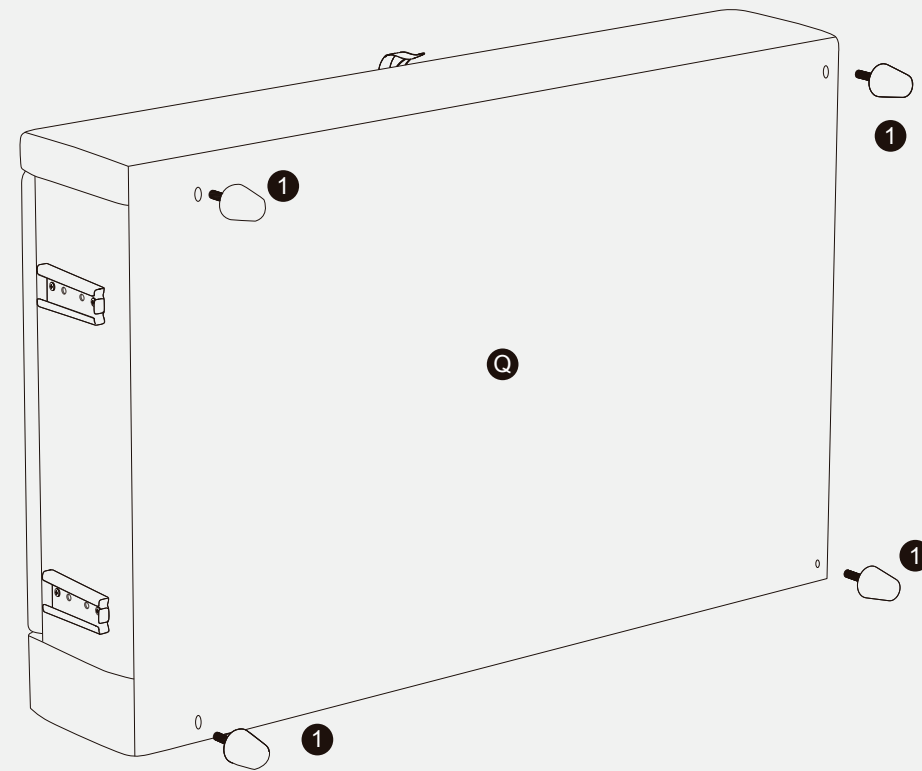
CARTON F ASSEMBLY

Long storage seat module is in carton F, Remove all parts from the carton F.
Place them on protected surface or carpet.

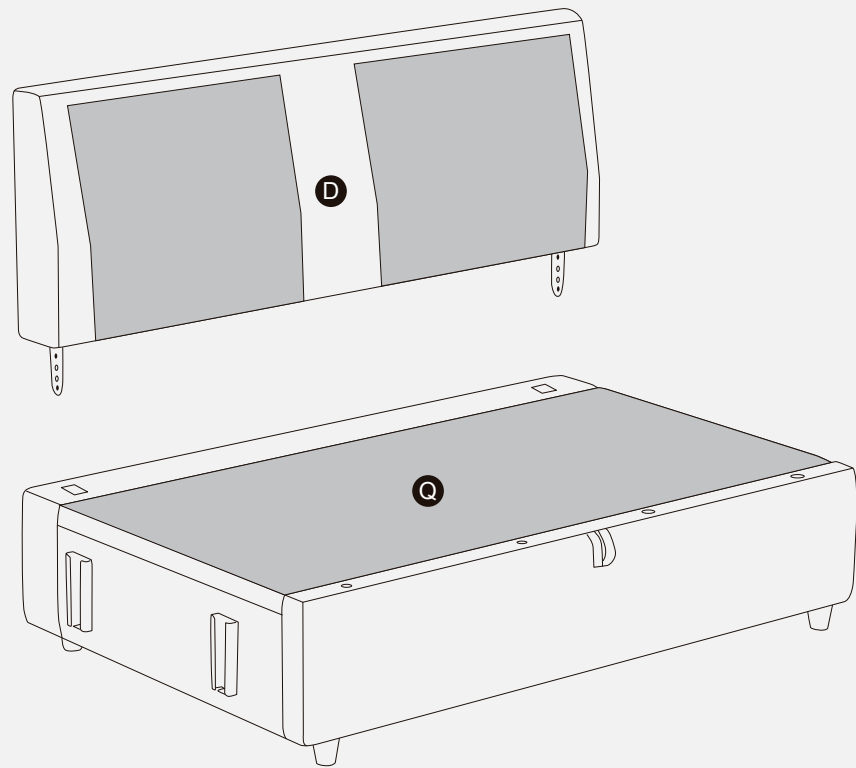
Step1:



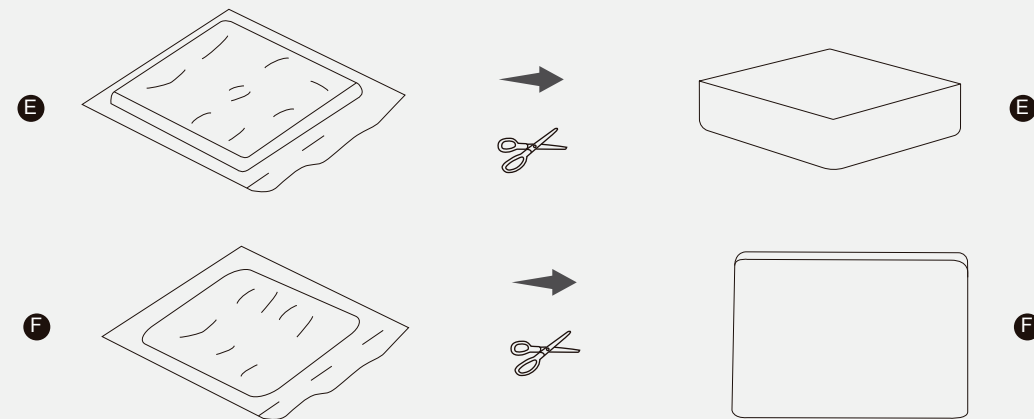
Step2:



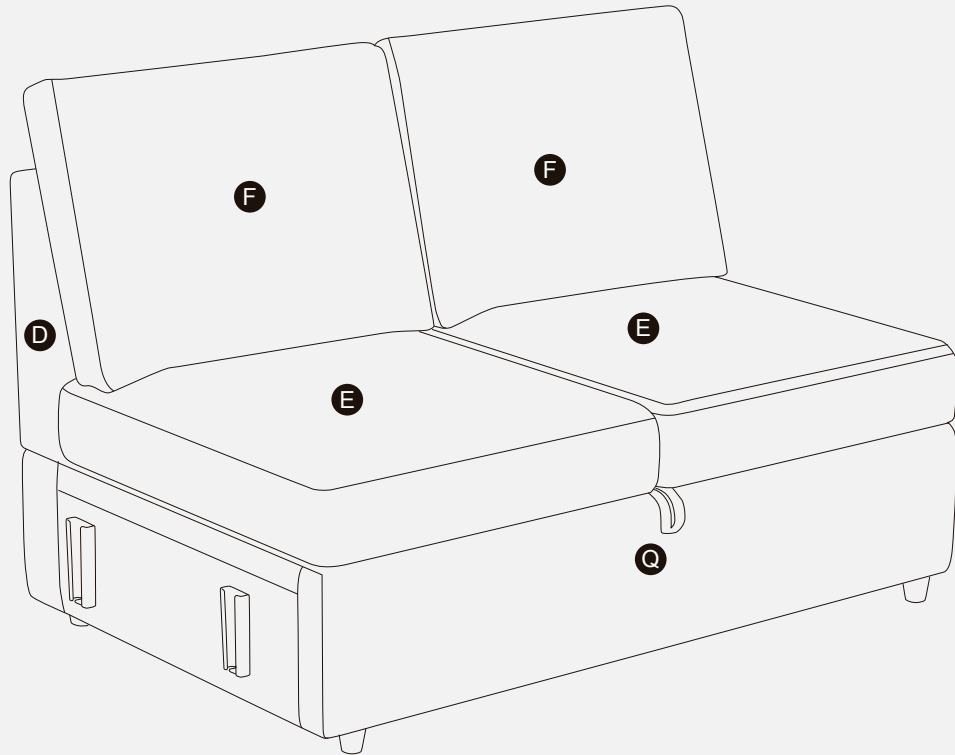
Step3:



Step4:

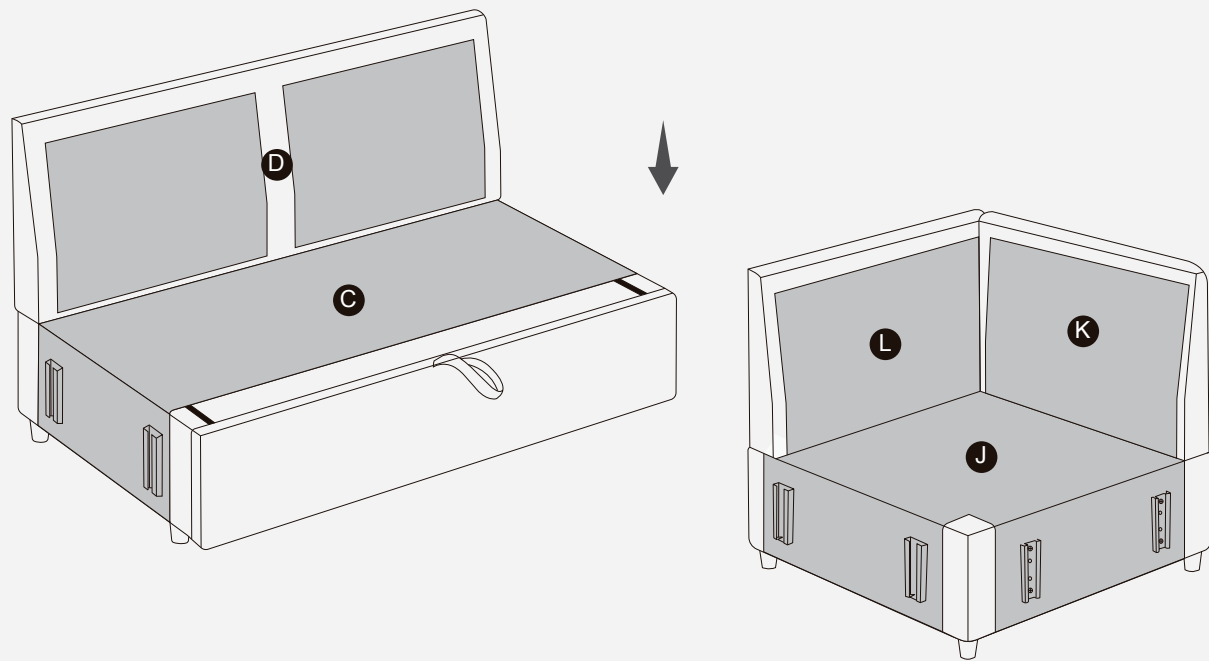


Step5:

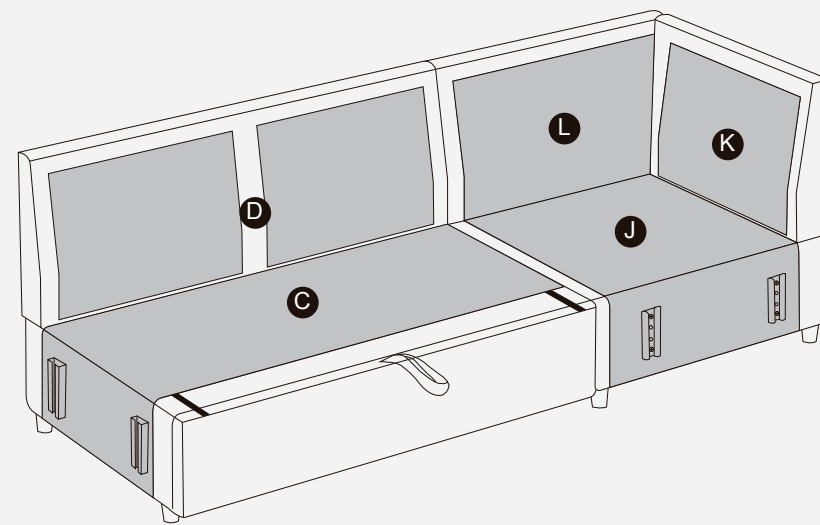


**HOW TO CONNECT
CARTON(A+B+C+D+E+F)**

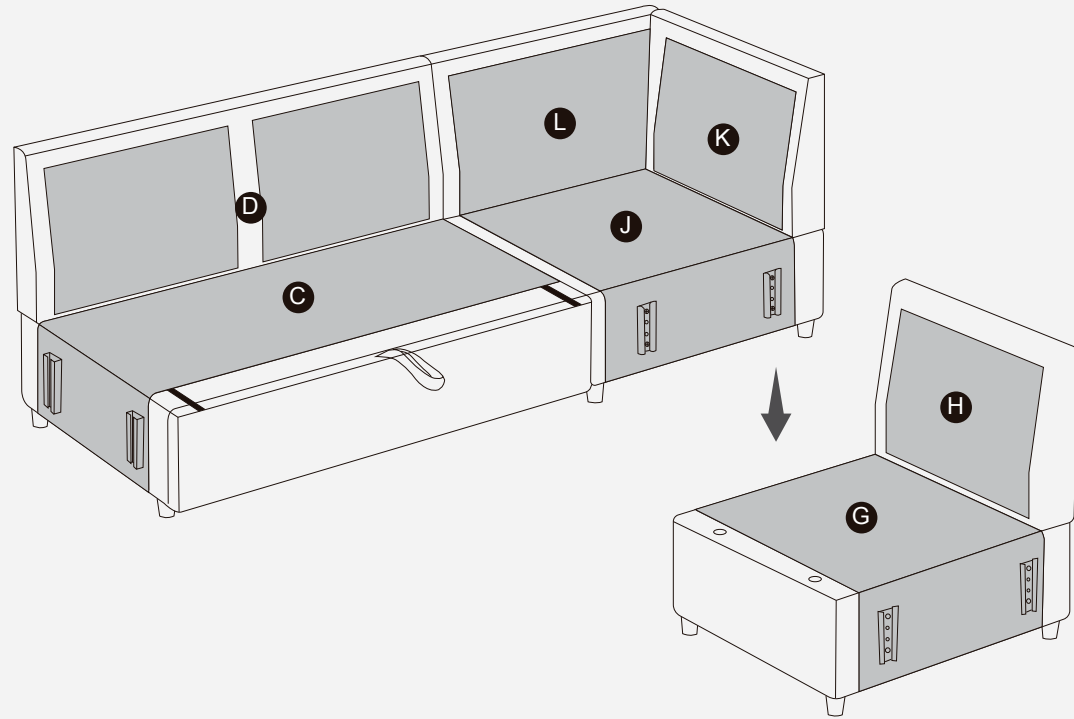
Step1:



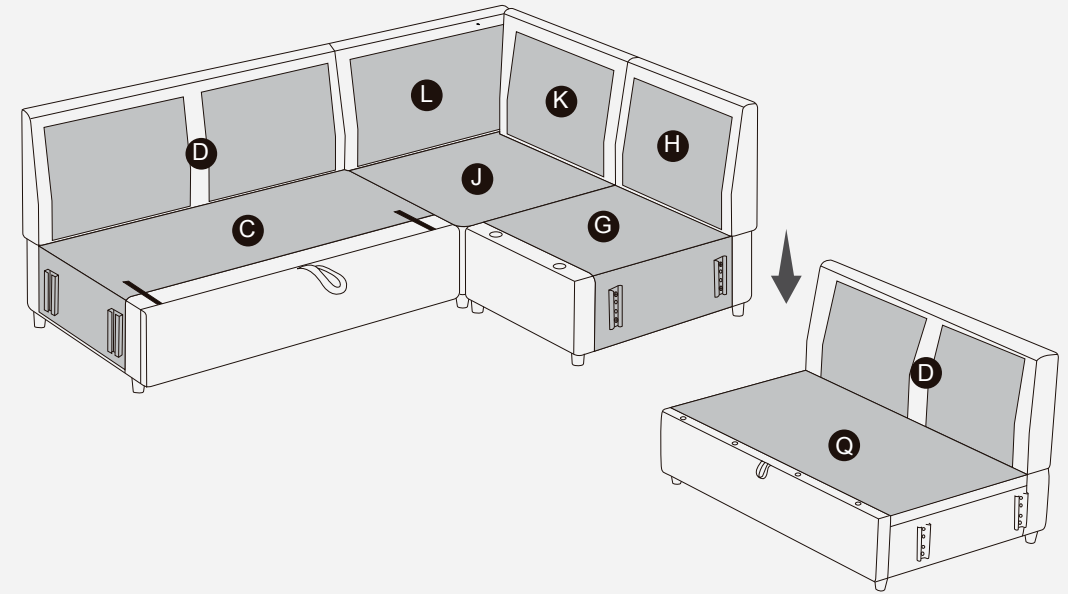
Step2:



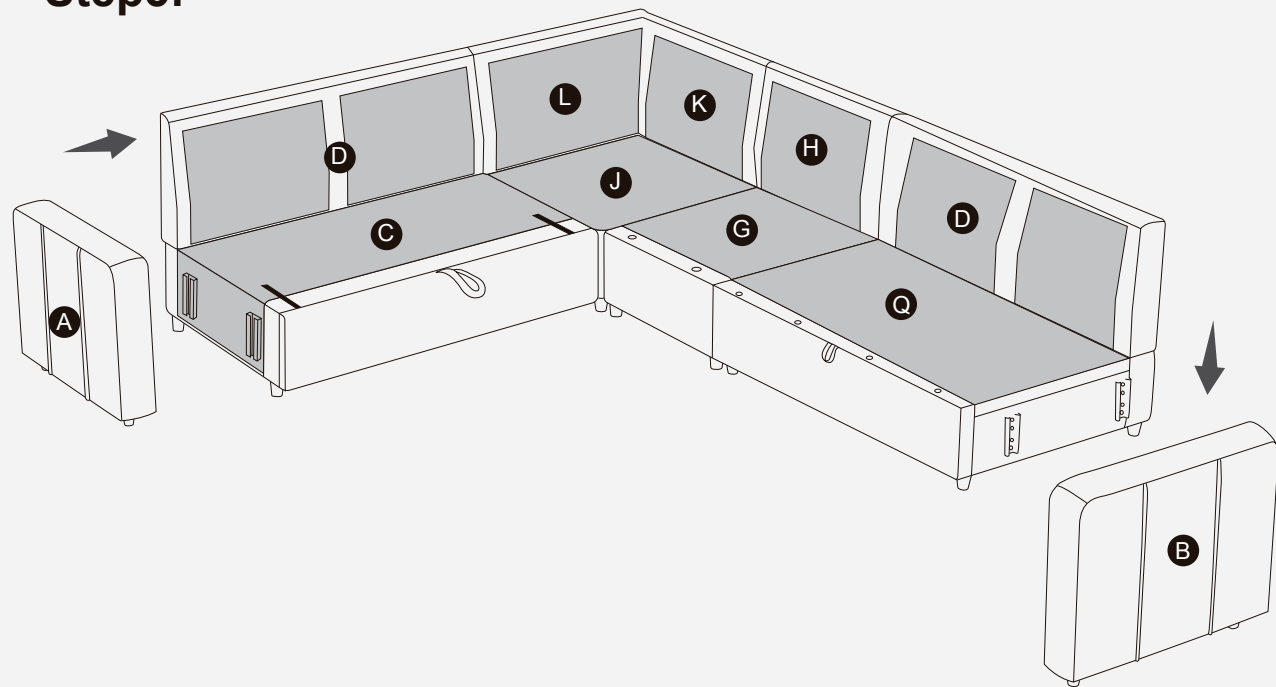
Step3:



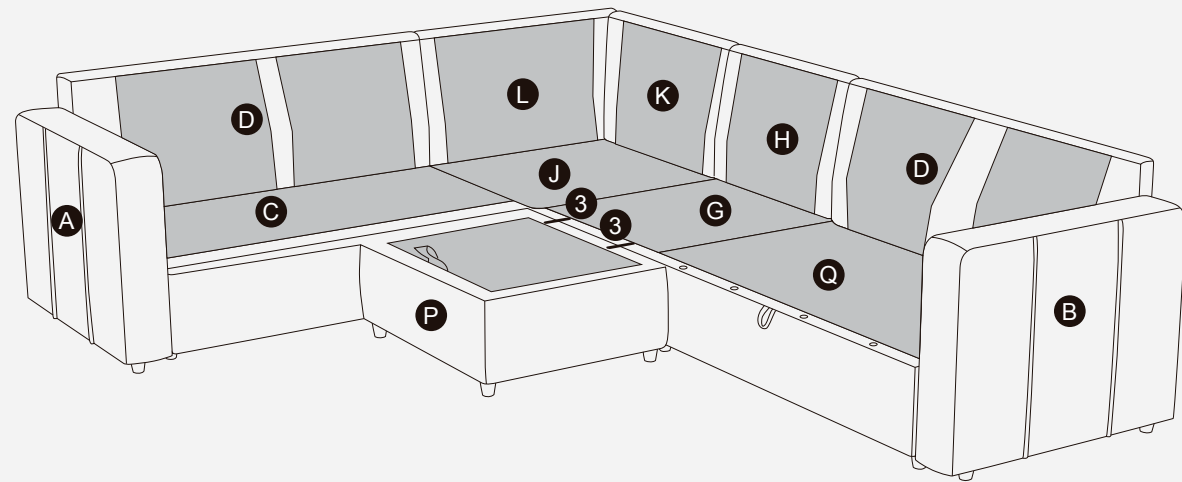
Step4:



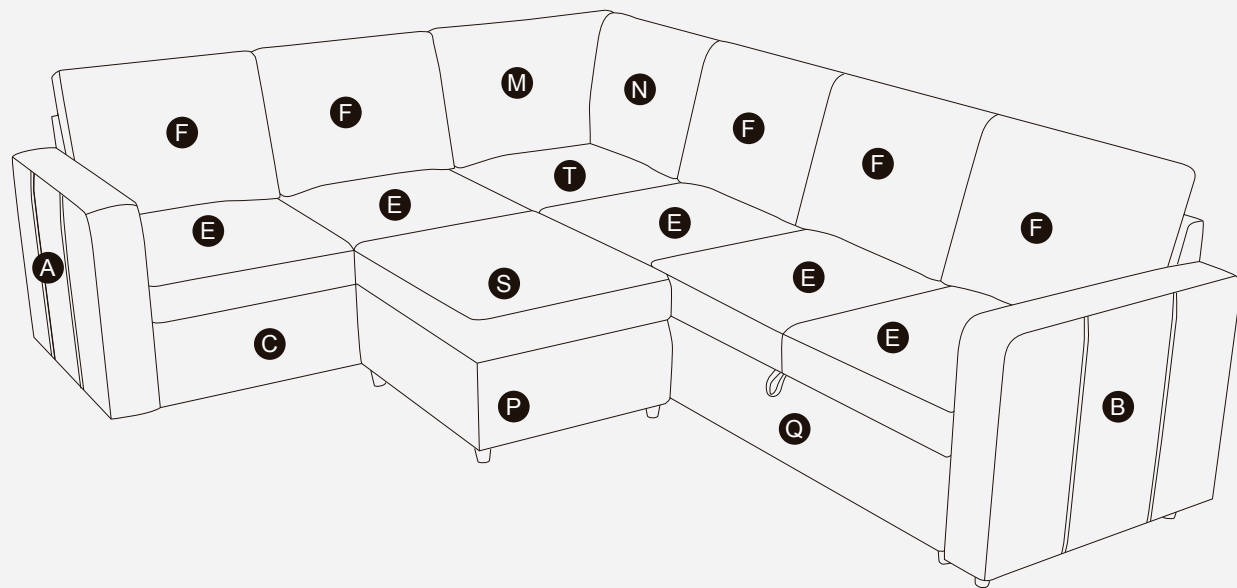
Step5:



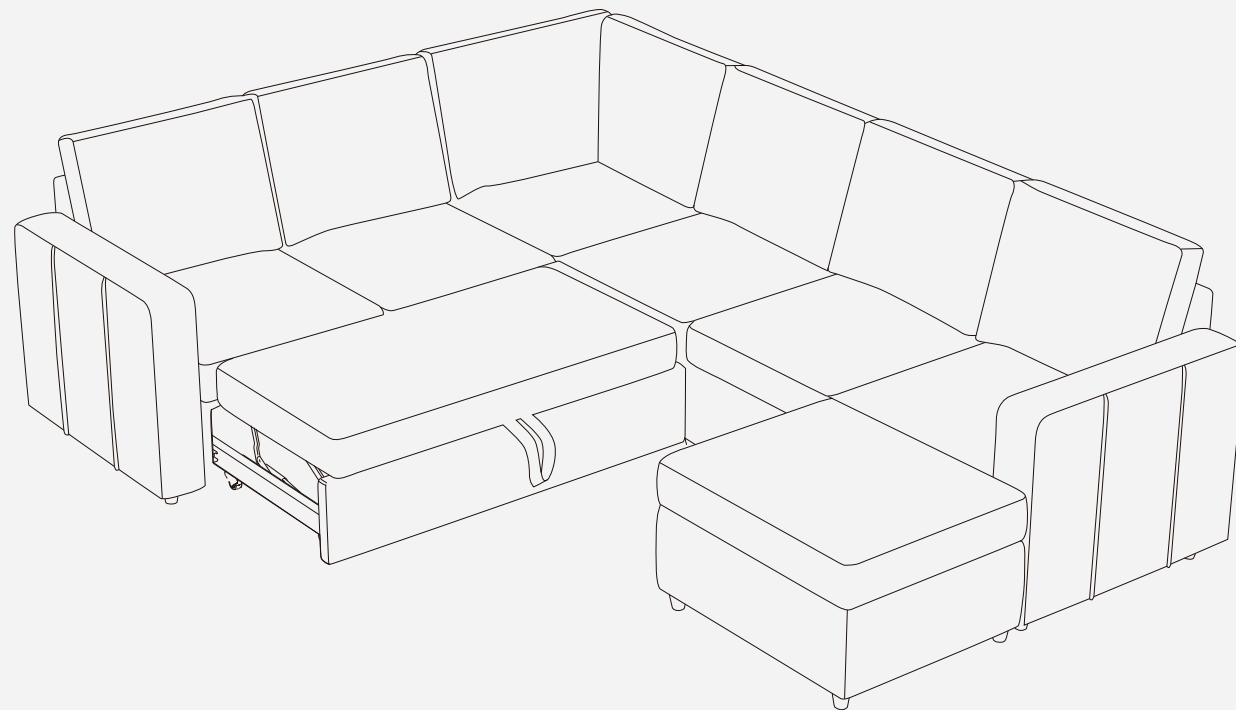
Step6:



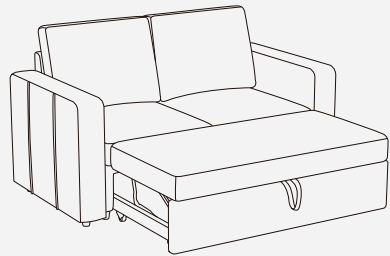
Step7:



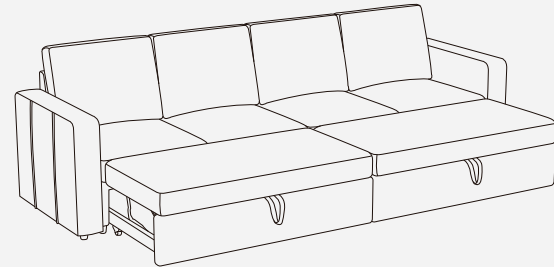
Step8:



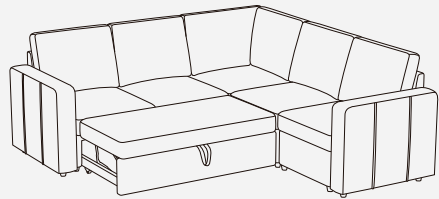
FREE COMBINATION



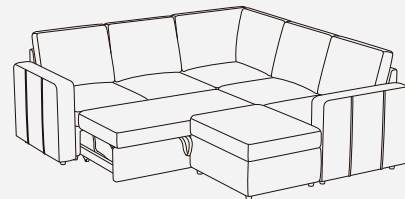
CARTON (A+B)



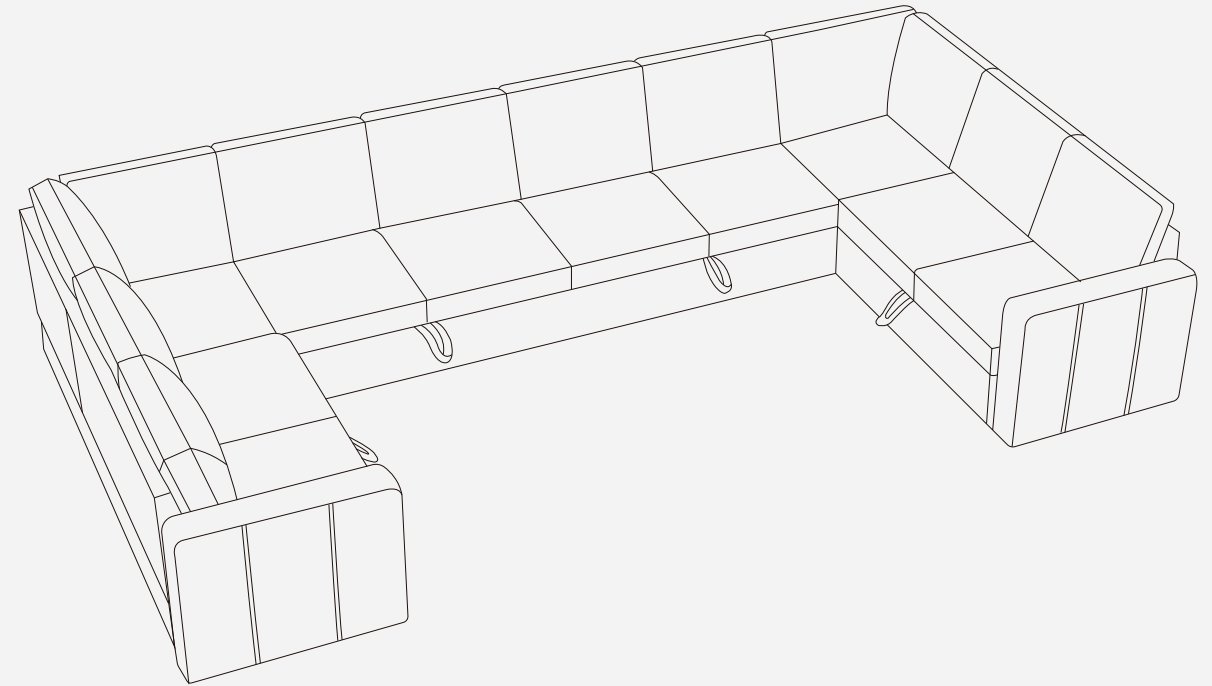
CARTON (A+2B)



CARTON (A+B+2C+D)



CARTON (A+B+D+E+F)



CARTON (A +2B+2D+2F)