



Vestil Manufacturing Corp.
 2999 North Wayne Street, P.O. Box 507, Angola, IN 46703
 Telephone: (260) 665-7586 -or- Toll Free (800) 348-0868
 Fax: (260) 665-1339
 Web: www.vestilmfg.com e-mail: info@vestil.com

HDP-Series Pallet Lifters

Instruction Manual



Receiving instructions

After delivery, remove the packaging from the product. Inspect the product closely to determine whether it sustained damage during transport. If damage is discovered, record a complete description of it on the bill of lading. If the product is undamaged, discard the packaging.

Replacement Parts and Technical Service

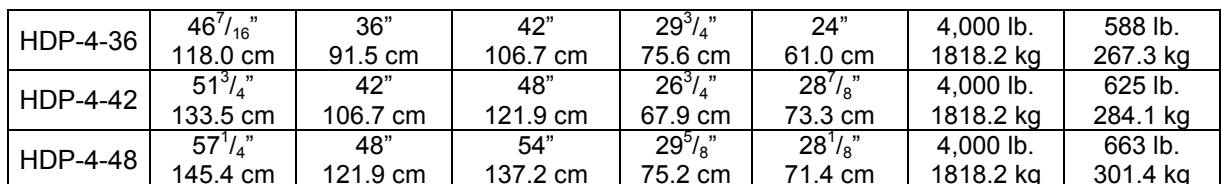
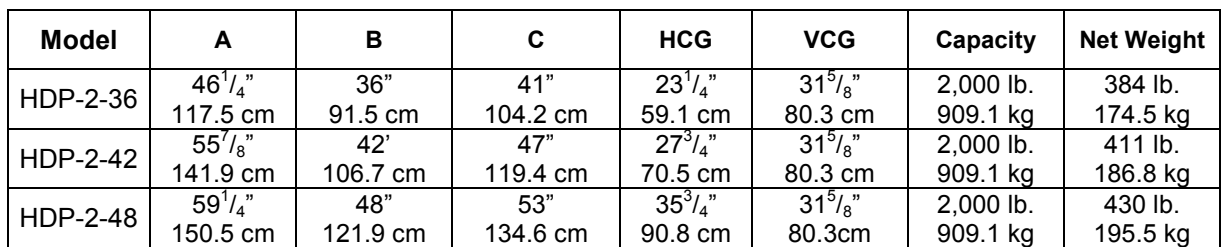
For answers to questions not addressed in these instructions and to order replacement parts, labels, and accessories, call our Technical Service and Parts Department at (260) 665-7586. The department can also be contacted online at http://www.vestilmfg.com/parts_info.htm.

NOTE: The end-user is solely responsible for confirming that product design, use, and maintenance comply with laws, regulations, codes, and mandatory standards applied where the product is used.

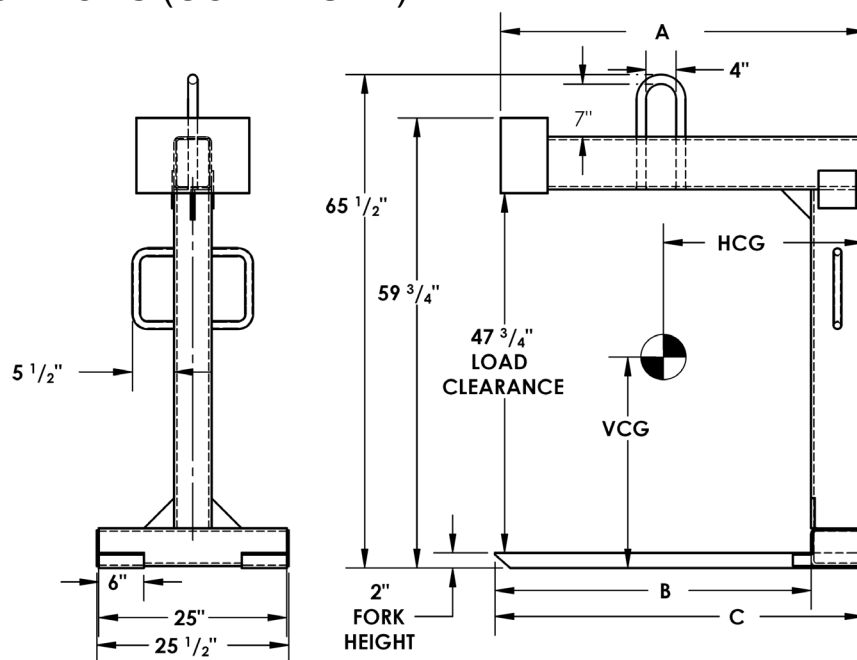
Table of Contents

Specifications.....	2 - 3
Signal Words.....	3
Hazards.....	4
Features.....	4
Using the Lifter.....	5
Record of Satisfactory Condition.....	5
Inspections and Maintenance.....	5 - 6
Labeling Diagram.....	6
Limited Warranty.....	7

Dimensions, net weight, capacity (maximum rated load), and centers of gravity for each HDP model are provided in the following diagrams and table.



SPECIFICATIONS (CONTINUED)



HDP-6-42	48 ¹ / ₂ " 123.2 cm	42" 106.7 cm	49" 124.5 cm	26 ⁵ / ₈ " 67.6 cm	28" 71.1 cm	6,000 lb. 2727.3 kg	776 lb. 352.7 kg
HDP-6-48	57 ¹ / ₂ " 146.1 cm	48" 121.9 cm	55" 139.7 cm	30 ¹ / ₂ " 77.5 cm	27 ³ / ₈ " 69.5 cm	6,000 lb. 2727.3 kg	916 lb. 416.4 kg
HDP-6-54	58 ¹ / ₂ " 148.6 cm	54" 137.2 cm	61" 154.9 cm	32" 81.3 cm	26 ³ / ₈ " 67.0 cm	6,000 lb. 2727.3 kg	960 lb. 436.4 kg

SIGNAL WORDS

This manual classifies personal injury risks and situations that might cause property damage with signal words. Signal words indicate the seriousness of injuries that might result if a particular act does, or does not, occur.



Identifies a hazardous situation which, if not avoided, WILL result in DEATH or SERIOUS INJURY. Use of this signal word is limited to the most extreme situations.



Identifies a hazardous situation which, if not avoided, COULD result in DEATH or SERIOUS INJURY.



Indicates a hazardous situation which, if not avoided, COULD result in MINOR or MODERATE injury.



Identifies practices likely to result in product/property damage, such as operation that might damage the product.

HAZARDS

Vestil strives to identify all foreseeable hazards associated with the use of its products. However, no manual can address every possible risk. The most effective means for avoiding injury are to read all of the instructions before installing the rack and to apply sound judgement whenever using, inspecting, and maintaining it.

⚠ DANGER Electrocution will cause serious personal injury or death.

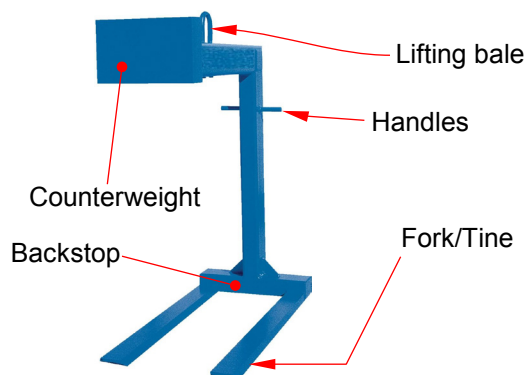
- **DO NOT contact live electrical wires with the lifter or the load!**

⚠ WARNING Improper or careless use of this device might result in serious personal injury or death.

- DO NOT use the lifter until you read and understand this entire manual.
- Before using the lifter, review the operation instructions and safety messages included in the instruction manuals for your crane, trolley, hoist, and any other device/equipment used in conjunction with this pallet lifter.
- This device is a below-the-hook lifting device. ALWAYS inspect it before each use according to the recommendations of the Association of Mechanical Engineers (ASME) in the most recent edition of ASME standard B30.20, "Below-the-Hook Lifting Devices". A copy of the standard can be purchased from the ASME website at <https://www.asme.org/shop/standards>.
- ONLY connect the device to a safety hook, i.e. hook with a self-closing latch. DO NOT connect the clamp to a safety hook that does not function properly or that is damaged.
- DO NOT attempt to lift more than the rated load of the lifter. ALWAYS make sure that loads weigh no more than the rated load.
- DO NOT attempt to lift a pallet if the pallet is damaged. Both the pallet and the lifter must be free of debris such as oil, grease, water, dirt, or other matter on its surface, that might interfere with or degrade the connection between the lifter and the pallet.
- **Instruct all personnel to stay out of the travel path while using the lifter.**
- DO NOT remove or obscure any label. Verify the placement and legibility of all labels shown in the *Labeling Diagram* on p. 6. If a label is not easily readable from a reasonable viewing distance, remove the unit from service and contact *Technical Service* to order a replacement. DO NOT use the lifter UNLESS all labels are present and readable.
- DO NOT attempt to lift an unbalanced load. Raise the load slowly and only a few inches above the ground. Confirm that load does not slide on the forks/tines. If the load shifts, immediately return the load to the ground. If the load cannot be securely and safely lifted, use another piece of equipment to move it.
- DO NOT lift more than one pallet at a time. DO NOT lift stacked pallets.
- DO NOT sit, or ride, on the lifter or the load. DO NOT move loads over people.
- DO NOT lift a load higher than necessary. Only raise the load high enough to avoid contacting items in the travel path. NEVER lift loads over people!
- DO NOT raise the load over your feet or any other part of your body. Stay out from underneath the suspended lifter at all times.
- DO NOT lift people or any apparatus that supports people, such as a work platform. Only lift evenly-distributed, centered, palletized loads.
- DO NOT get in front of or behind a suspended load while moving it. Stand clear of the lifter and load and orient yourself so that the load is visible to you.
- DO NOT leave suspended loads unattended. An unattended, suspended load creates a risk of injury to yourself and others. Always move the load to its desired location, set it down and properly immobilize it; then disengage the pallet.
- DO NOT modify or alter this device in any way without first acquiring written approval from Vestil. Unapproved modifications automatically void the *Limited Warranty* and might make the lifter unsafe to use.

FEATURES

Noteworthy features of the lifter are identified in the diagram. Refer to this diagram if an instruction mentions a lifter feature.



USING THE LIFTER

NOTE: A designated person must verify that the pallet lifter complies with all regulations, codes, and standards that apply to Below-the-Hook Lifting Devices in the location where it is *used*.

This lifter is designed to lift pallets and closed-bottomed skids. Loads must be secured to skids and be evenly distributed on them. If items are not secured to their skids, they might fall off or shift during lifting operations, which could cause the entire load to slide off of the tines.

Connect the safety hook of the hoist to the lifting bale (see *FEATURES* on p. 4) on top of the lifter. Be sure that the hoist has a self-closing latch in working order. The latch prevents the hook from accidentally disengaging the bale.

Stand behind the lifter and grasp the handles. Keep your feet out from underneath the lifter and direct the tines of the lifter into the fork channels of the pallet (or skid). Fully insert the forks, i.e. the pallet (or skid) should contact the backstop. See *FEATURES* on p. 4. Never lift a pallet that extends beyond the tips of the tines.

Use the control of your overhead hoist to slowly raise the lifter and load. Check the balance and stability of the load. If the load is not balanced (the lifter tilts to one side or the other or slides towards the tips of the forks), lower it to the ground and reposition the items on the pallet. Securely attach all items to the pallet. Raise the load and check its balance once again. Repeat this process until the load is balanced. Once the load is balanced, raise the lifter and move the load to the desired location. Do not elevate the load any more than necessary to avoid contact with items that cannot be moved out of the travel path.

Remove the pallet from the lifter by lowering it to the ground. Raise the lifter enough that it disengages to pallet, i.e. does not touch the top or bottom boards. Grasp the handles and carefully back the lifter out of the fork channels.

RECORD OF SATISFACTORY CONDITION

Record the condition of the lifter before putting it into service. Thoroughly photograph the unit from multiple angles. Take close range photographs of all labeling. Collate all photographs and writings into a file. Mark the file appropriately to identify it. This file is a record of the lifter in satisfactory condition. Compare the results of each *inspection* to this record to determine whether the unit is in satisfactory condition. Purely cosmetic changes, like damaged surface finish (paint or powdercoat), are not changes from satisfactory condition. However, touchup paint should be applied to all affected areas as soon as damage occurs.

MAINTENANCE AND INSPECTIONS

Designated inspection personnel must inspect the lifter before it is used for the first time and prior to EACH use. Compare its condition to the *RECORD*. Do not use the lifter unless it is in satisfactory condition.

Inspections:

ASME standard B30.20 ("B30.20") includes detailed inspections procedures. The following inspections mirror the recommendations in B30.20. However, it is highly recommended that the complete B30.20 inspection procedures be applied.

Inspections Before & During EVERY lift: visual examination by the operator prior to AND during each lift. In particular, the *operator* should inspect for:

1. Debris on the load surfaces; AND
2. Surface and frame abnormalities.

Frequent Inspections: the specific meaning of "frequent" varies from daily to monthly depending on the service classification (normal, heavy, severe, and special/infrequent) of the lifter. Definitions of the service classifications appear in B30.20. The *operator* (or other *designated person*) should visually inspect the lifter for:

1. Deformation, cracking, or excessive wear of ANY PART of the lifter;
2. Operating mechanisms for conditions that interfere with proper function; AND/OR
3. Loose or missing fasteners, stops, labels or nameplates.

Periodic Inspections: complete visual inspections performed AND recorded by a *qualified* person. The inspection should specifically look for:

1. Loose bolts or fasteners;
2. Excessive wear of load surfaces (forks/tines) or other frame elements; AND/OR
3. Excessive wear at the points where the lifting bail connects to the hoist hook, and load supporting tines.

Maintenance: Perform maintenance on the lifter each time it is inspected to ensure that it remains in satisfactory condition for as long as possible.

⚠ WARNING ONLY qualified persons may perform maintenance on the clamp. According to ASME B30.20, a qualified person is someone “who, by possession of a recognized degree in an applicable field or certificate of professional training, and experience, has successfully demonstrated the ability to solve or resolve problems relating to the subject matter [pallet lifter] and work [use of the pallet lifter].” See ASME B30.20-0.2-2003.

- 1) Disconnect the lifter from the hoist hook and tag it, “Out of Service.”
- 2) Compare the results of your inspection (every lift, frequent, or periodic) to the **RECORD OF SATISFACTORY CONDITION**.
- 3) Restore the lifter to satisfactory condition. If you are unsure whether damage discovered during an inspection makes the lifter unsafe to use, or for answers to any other questions about inspecting and maintaining this device, contact **Technical Service**. Excessive wear, or rusting, warrants immediate replacement of the entire lifter.
- 4) Make a dated record of all repairs, adjustments, and replacements.

LABELING DIAGRAM

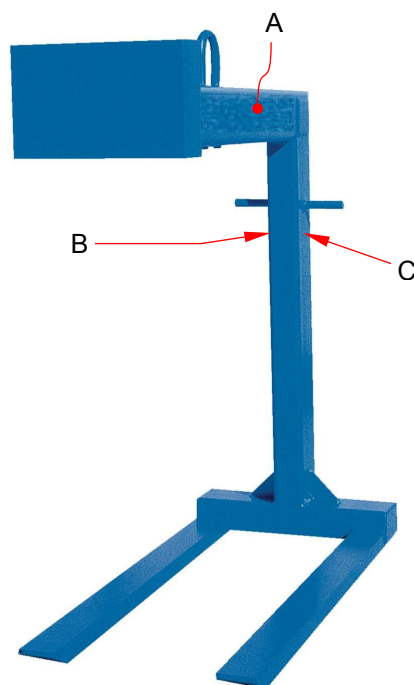
The unit should be labeled as shown in the diagram. However, label content and location are subject to change so your product might not be labeled exactly as shown. Thoroughly photograph the unit when you first receive it as discussed in the **Record of Satisfactory Condition** section of this manual. Make sure that your Record includes a photograph of each label. Modify this diagram, if necessary, to indicate labeling actually applied. Replace all labels that are, damaged, missing, or not easily readable (e.g. faded). Contact the **Parts Department** online at http://www.vestilmfg.com/parts_info.htm to order replacement labels. You may also call (260) 665-7586 and ask the operator to connect you to the **Parts Department**.

A: Label 624

⚠ WARNING	⚠ ADVERTENCIA	⚠ AVERTISSEMENT
CENTER LIFTING HOOK ABOVE LOAD CENTER OR LOAD DUMPING MAY OCCUR. ADJUST LOCATION OF LOAD OR LIFTING HOOK, IF ADJUSTABLE. DO NOT EXCEED RATED CAPACITY. HOIST CAPACITY MUST EQUAL OR EXCEED LIFTER CAPACITY PLUS WEIGHT OF UNIT. LIFT SLOWLY. STAND CLEAR WHILE LIFTING.	CENTRE EL GANCHO DE ELEVACION ENCIMA DEL CENTRO DE LA CARGA O LA CARGA SE PODRIA DESCARDAR. AJUSTE EL LUGAR DE LA CARGA O DEL GANCHO DE ELEVACION, SI ES ADJUSTABLE. NO EXCEDA LA CAPACIDAD TASADA. LA CAPACIDAD DEL TORNO DEBE IGUALAR O DEBE EXCEDER LA CAPACIDAD DE ALZADOR EL PESO POSITIVO DE LA UNIDAD. ELEVE LENTAMENTE. MANTENGASE APARTADO MIENTRAS SE ELEVE.	CENTRER LE CROCHET DE LEVAGE AU-DESSUS DU CENTRE DE LA CHARGE OU UN BENNAGE DE LA CHARGE RÉSULTERAIT. AJUSTER LA POSITION DE LA CHARGE OU DU CROCHET DE LEVAGE, S'IL EST POSSIBLE. NE PAS DÉPASSER LA CAPACITÉ NOMINALE. CAPACITÉ DE L'APPAREIL DE LEVAGE DOIT ÉGALER OU DÉPASSER LA CAPACITÉ DE L'ÉLEVATEUR AVEC LE POIDS DE L'UNITÉ. LEVER LENTEMENT TENEZ-VOUS À L'ÉCART PENDANT LEVAGE.

VESTIL MANUFACTURING CORPORATION
Angola, Indiana USA • Phone (260) 665-7586 • sales@vestil.com • www.vestil.com

624



B: Label 675

⚠ WARNING	⚠ ADVERTENCIA
<ul style="list-style-type: none"> • DO NOT exceed rated capacity • DO NOT use if damaged, malfunctioning, or missing parts • DO NOT lift people OR lift loads over people • DO NOT raise load higher than necessary • DO NOT leave a suspended load unattended • DO NOT use lifter unless you read and understand the owner's manual • DO NOT alter OR modify lifter • DO NOT remove OR obscure any label • STAY CLEAR of suspended loads • Secure load before using this device 	<ul style="list-style-type: none"> • NO exceda la capacidad tasada • NO USE is las partes estan dañadas, no funcionan correctamente o faltan partes. • NO eleve al personal o eleve cargas sobre el personal • NO eleve la carga mas alto de lo necesario • NO deje desatendida una carga que este suspendida • NO use el elevador a no ser que haya leído y entendido las instrucciones del manual del propietario • NO altere o modifique el elevador • NO quite u oscurezca ninguna etiqueta • MANTENGASE alejado de las cargas suspendidas • Asegure la carga antes de usar este dispositivo

675
rev 1213

C: Label 320

MODEL NUMBER/NUMERO MODELO	_____
RATED LOAD	_____ LBS.
CARGA TASADA	_____ KGS.
WEIGHT OF LIFTER	_____ LBS.
PESO DE LA UNIDAD	_____ KGS.
SERIAL NUMBER/NUMERO DE SERIE	_____
BTH-1 Design Category/Diseño BTH-1 Categoría:	B
BTH-1 Service Category/Servicio BTH-1 Categoría:	1
VESTIL MANUFACTURING COMPANY Phone (260) 665-7586 • www.vestil.com	
320	rev 0409

LIMITED WARRANTY

Vestil Manufacturing Corporation ("Vestil") warrants this product to be free of defects in material and workmanship during the warranty period. Our warranty obligation is to provide a replacement for a defective, original part covered by the warranty after we receive a proper request from the Warrantee (you) for warranty service.

Who may request service?

Only a warrantee may request service. You are a warrantee if you purchased the product from Vestil or from an authorized distributor AND Vestil has been fully paid.

Definition of "original part"?

An original part is a part used to make the product as shipped to the Warrantee.

What is a "proper request"?

A request for warranty service is proper if Vestil receives: 1) a photocopy of the Customer Invoice that displays the shipping date; AND 2) a written request for warranty service including your name and phone number. Send requests by one of the following methods:

US Mail

Vestil Manufacturing Corporation
2999 North Wayne Street, PO Box 507
Angola, IN 46703

Fax

(260) 665-1339
Phone
(260) 665-7586

Email

info@vestil.com
Enter "Warranty service request"
in subject field.

In the written request, list the parts believed to be defective and include the address where replacements should be delivered. After Vestil receives your request for warranty service, an authorized representative will contact you to determine whether your claim is covered by the warranty. Before providing warranty service, Vestil will require you to send the entire product, or just the defective part (or parts), to its facility in Angola, IN.

What is covered under the warranty?

The warranty covers defects in the following original, dynamic parts: motors, hydraulic pumps, motor controllers, and cylinders. It also covers defects in original parts that wear under normal usage conditions ("wearing parts"), such as bearings, hoses, wheels, seals, brushes, and batteries.

How long is the warranty period?

The warranty period for original dynamic components is 90 days. For wearing parts, the warranty period is 90 days. Both warranty periods begin on the date Vestil ships the product to the Warrantee. If the product was purchased from an authorized distributor, the periods begin when the distributor ships the product. Vestil may, at its sole discretion, extend a warranty period for products shipped from authorized distributors by up to 30 days to account for shipping time.

If a defective part is covered by the warranty, what will Vestil do to correct the problem?

Vestil will provide an appropriate replacement for any *covered* part. An authorized representative of Vestil will contact you to discuss your claim.

What is not covered by the warranty?

The Warrantee (you) is responsible for paying labor costs and freight costs to return the product to Vestil for warranty service.

Events that automatically void this Limited Warranty.

- Misuse;
- Negligent assembly, installation, operation or repair;
- Installation/use in corrosive environments;
- Inadequate or improper maintenance;
- Damage sustained during shipping;
- Collisions or other accidents that damage the product;
- Unauthorized modifications: Do not modify the product IN ANY WAY without first receiving written authorization from Vestil.

Do any other warranties apply to the product?

Vestil Manufacturing Corp. makes no other express warranties. All implied warranties are disclaimed to the extent allowed by law. Any implied warranty not disclaimed is limited in scope to the terms of this Limited Warranty. Vestil makes no warranty or representation that this product complies with any state or local design, performance, or safety code or standard. Noncompliance with any such code or standard is not a defect in material or workmanship.

