

PRODUCT DESCRIPTION

Dimension	Watts	Lumens	Color Temperature
20" x 28"	16W	1280	6400K
24" x 32"	20W	1680	
24" x 36"	22W	1860	
28" x 36"	24W	1920	
30" x 36"	25W	2000	
36" x 36"	26W	2080	
40" x 24"	22W	1760	
40" x 32"	28W	2240	

01

PRODUCT DESCRIPTION

Dimension	Watts	Lumens	Color Temperature
48" x 24"	30W	2400	6400K
48" x 30"	32W	2600	
48" x 36"	34W	2800	
55" x 36"	38W	3040	
60" x 24"	34W	2720	
60" x 28"	30W	2400	
60" x 36"	39W	3120	
72" x 36"	44W	3520	

02

PRODUCT DESCRIPTION

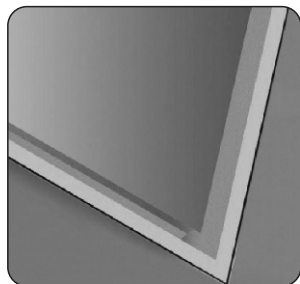
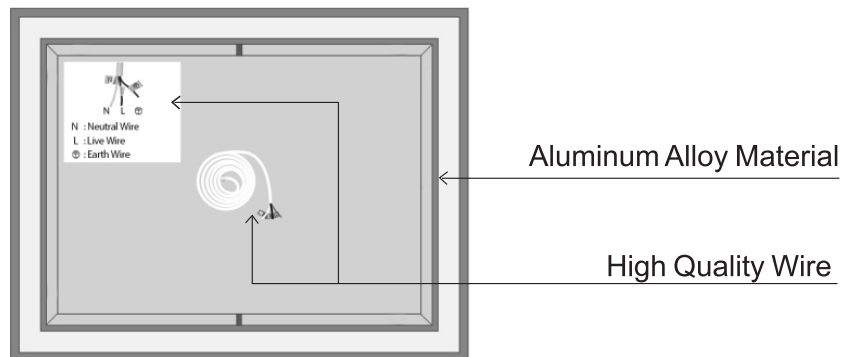
PARAMETER	SPECIFICATION
Color Temperature Option	6400K
Input Voltage	AC100-120V
Output Voltage	12V DC
CRI	85~90 Ra
Working Temperature	-20~50 C
Life Span	>20000+ hours
Anti-fog	Yes

PRODUCT DESCRIPTION

PARAMETER	SPECIFICATION
Safety Compliance	UL
IP Rate	IP54
Mirror Glass	5 mm
Wiring Method	Hardwired / Plug in
Switch	Touch Sensor Switch
Mounting Method	Wall Mount
Double button	Yes

PRODUCT DESCRIPTION

1. This led light mirror with a thickness of 5 mm, is not only copper-free and lead-free, but also is equipped with three silver and paint layers of protection, which is high quality and environmentally friendly.
2. LED lifetime: (20000+ hours) Life time is 5 times longer than traditional mirror.
3. This wall mirror combines simple styles and functionality to create a modern home furnishing ideal for use in bathroom, kitchen, bedroom, or any other.



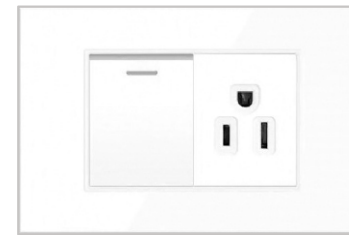
5mm Quality Mirror



Water-proof Design

TWO WIRING CONNECTION SOLUTIONS

Opinion 1

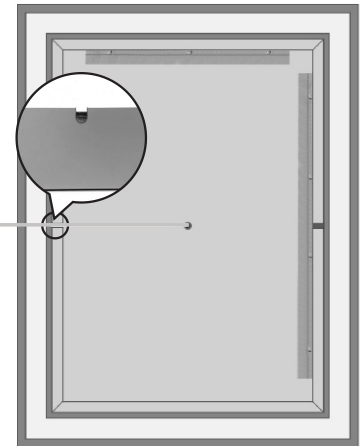


Support wall switch control:

Wall switch can directly control the light ON/OFF as this mirror equipped with a memory touch sensor.

Power plug
(Not included)

Notch design, external wiring will not bulge




Opinion 2

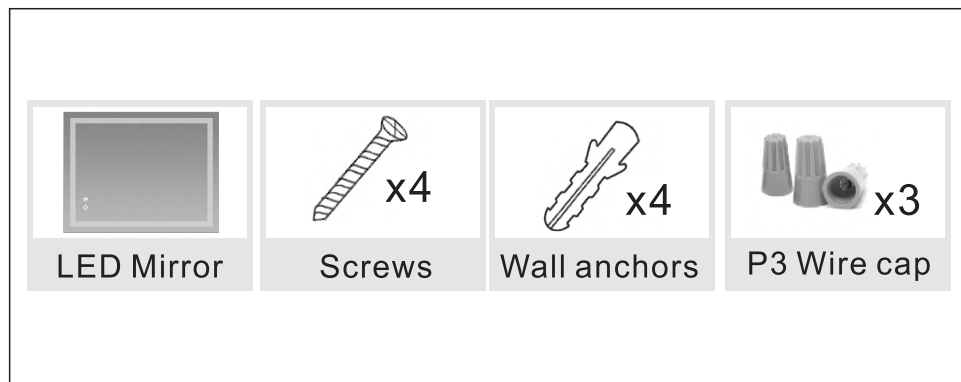


Power lead
(Included)

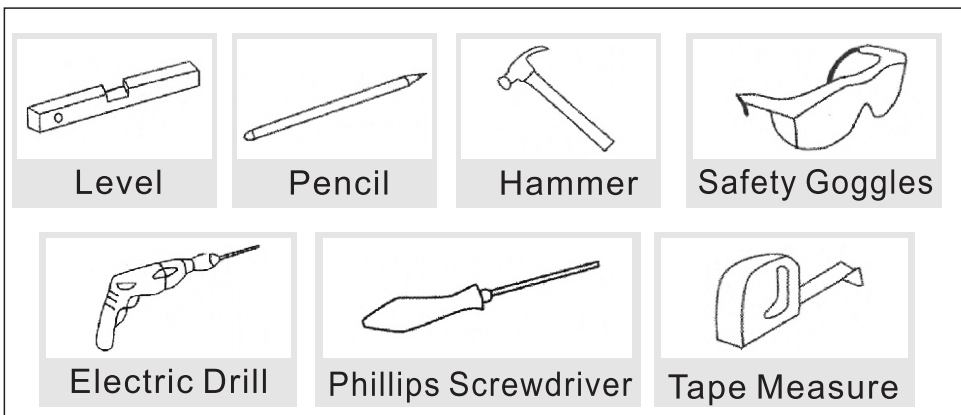
Power line on the wall
(Leave in advance)

First cut the plug, then connect the three wires on the back of the mirror to the wires on the wall.

 **Note:** After opening the package, please inspect the product immediately for damage in transit or missing parts. If there is any missing, Please contact us. This manual is intent to guide the installation and care instruction.



INSTALLATION TOOLS (Not included)



BEFORE INSTALLATION


 **Thank you very much for using our products, in order to facilitate the use of our products, please read this instruction carefully before you begin installation.**

1. Keep the home voltages between 100V and 120 V, the best is 110V. When the home voltage exceeds 120V, please remember to use transformer.
2. You can connect the wires that are coming out of the center of the back of the mirror directly to your electrical connection box or the plug.
3. Handle the product carefully to prevent all sides and edges of the glass from being struck.
4. Ensure there are no hidden pipes or cables in the wall before drilling.
5. Ensure that the fixing location is able to take the weight of the complete fitting. (solid stone / brick walls).
6. Disconnect power before installing, adding or changing any component.
7. Installed by a qualified technician is recommended.
8. Wear suitable eye protection while drilling. Be careful when using power tools near water.
9. A minimum of two people is needed to perform this installation.

10. Before installation, please check to make sure the mirror is working properly:


After connecting the power, the two round buttons will turn white. At the moment the LED and anti-fog function are already on automatically. You don't need to click the button again. If you don't need to use any one of them, just touch it to turn it off, then the button will turn white.

Memory Function : The status of two buttons will have been memorized in the mirror. The next time you open the mirror it will be in the same state it was in before it was last closed, which means that you don't have to touch the buttons each time.

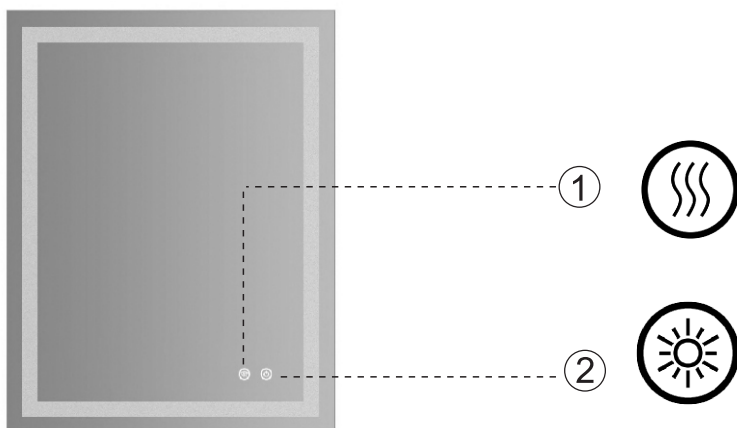
① The above button is the anti-fog switch. 

When you are not using it, remember to turn off the switch to prevent wasting energy.

Anti-fog film working principle: Ant-fog film converts electric energy into heat energy efficiently, and transmits heat directly to the mirror surface to warm the mirror surface. The specific power is kept at a constant temperature, which effectively prevents water vapor from condensing on the surface of the mirror and acts as an anti-fog.

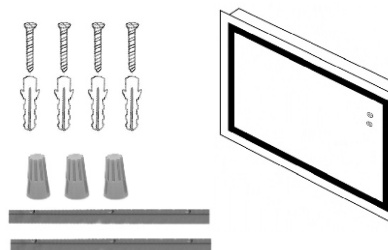
② The below button is the smart switch. 

If you want to adjust different brightness, keep holding the smart switch, and the brightness will change.

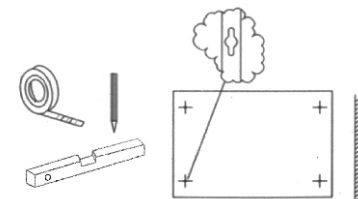


INSTALLATION OF LED MIRROR

Open the carton and make sure all the parts listed below are present.

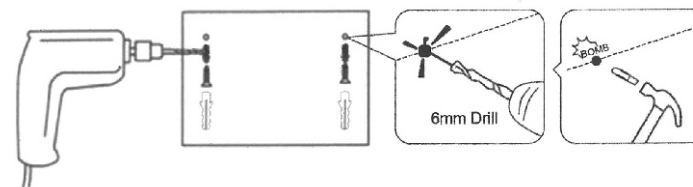


Distance measuring hook



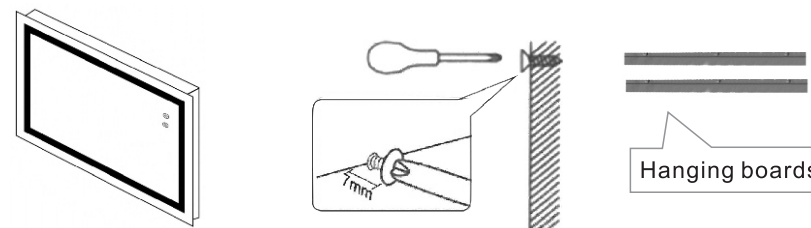
Measure the distance of four hooks center and use the level ruler to draw a horizontal line on the wall and then mark the location of the center of hooks.

Drill pilot holes on the marked spots



Use a electric drill to punch four 6mm holes at the marked spots, and then apply wall anchors with hammer.
(6mm drill bit, drilling depth in 5 cm)

Insert the screw



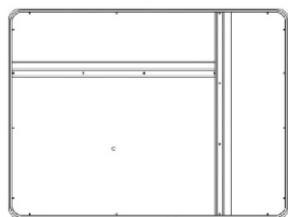
Use a screwdriver to tighten the screws of the wall plate

Recommended Installation (Pegboard)

Self-tapping screw X 2 Expansion tube X2



Aluminum strip

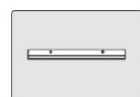


Drill holes on the wall according to the hole position of the aluminum strip.

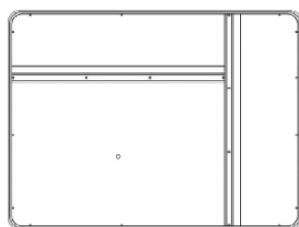


① ② ③

1. expand the expansion pipe into the wall.
2. aligning hole position of aluminum strip to drill hole.
3. twist the screw into the hole and fix the aluminum



After completion, the final wall hangs aluminum strip.



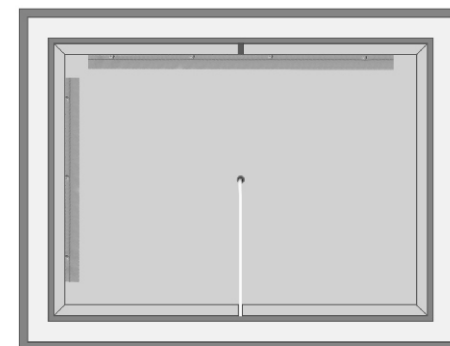
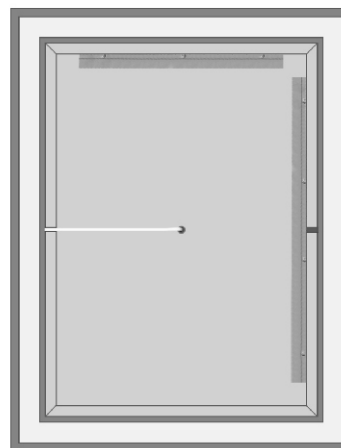
Align the aluminium bar hook on the wall and hang up the mirror.

Can be hung horizontally or vertically

The mirror can be installed in either portrait or landscape orientation, so 2 horizontal panels on the back of the mirror. Before installation, please confirm whether the wall installation is portrait or landscape.

Vertical

Horizontal



★ Hang vertically. Please measure the size and level with a measuring tape and level first

Connect the power

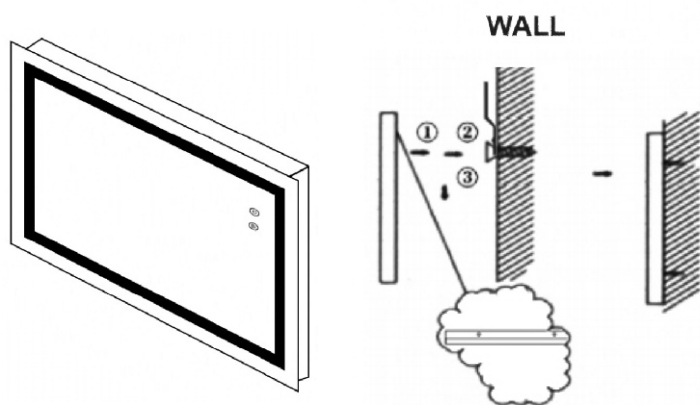
There are three power cords behind the mirror, the LIVE WIRE (L) NEUTRAL WIRE (N) and EARTH WIRE (\oplus). You can connect these wires to a standard switched lighting circuit or to a plug.

If you want to connect power wires to plug, you can refer to the steps:

- Remove the plug cover by either "snapping" or unscrewing it.
- Unscrew the little screws on each of the plug's pins.
- Insert the twisted copper wires into the holes in the pins.
- Tighten the little screw on each of the plug's pins.
- Make sure the electrical cord is firmly gripped by the arrest or clips.
- Replace the cover of the plug.

Other power connection methods are on the same principle.

Mount the mirror on the wall and ensure it is sturdy



USE AND CLEANING INSTRUCTION

⚠ In order to keep the LED mirror look perfectly, we suggest using and cleaning the mirror system regularly.

1. Please use in safe voltage range. (100V-120V)
2. Use electrical tape to wrap around the wires to prevent leakage.
3. Do not strike mirror glass with hard or pointed items.

⚠ Please obey the following procedure when you clean the mirror.

1. It is recommended that the product is cleaned with a soft, non abrasive cloth.
2. Do not use Irritating cleaning agents or abrasive materials on anytype of finished surface. Please use the any following cleanser to remove the dirt.

☒ Gentle liquid detergent.

☒ Colorless cleanser.

★ Product Warranty

Manufacturer warranty for 1 year from date of purchase.