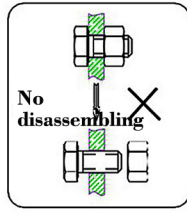


User's Manual

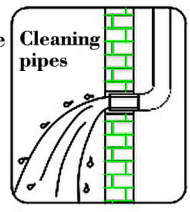


INSTALLATION STEPS

This product has been inspected and debugged by the factory to the best condition. Please do not disassemble and assemble it yourself.

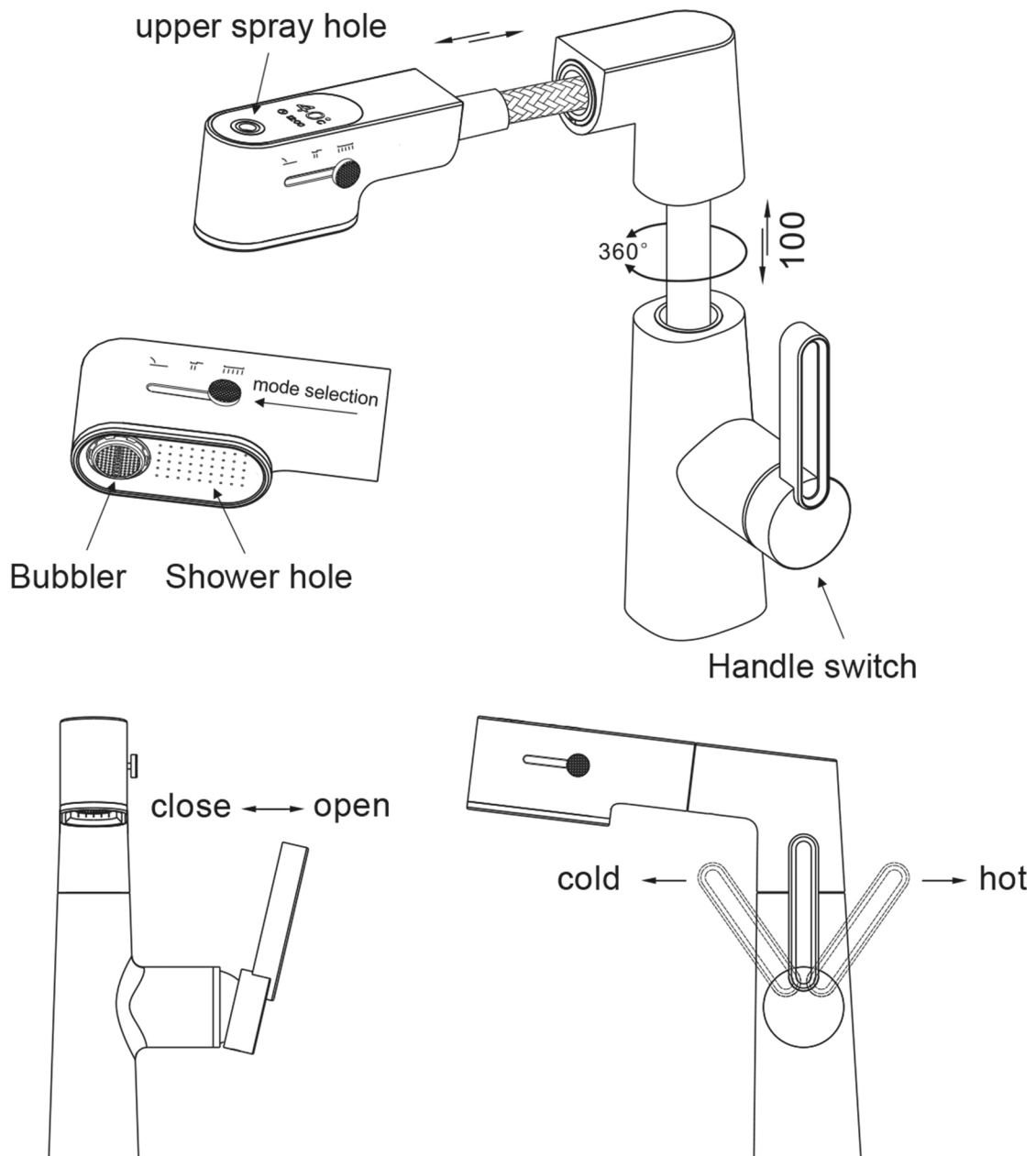


Before installing the faucet, please be sure to remove sundries and sludge from the water pipe to prevent sundries from blocking the faucet.

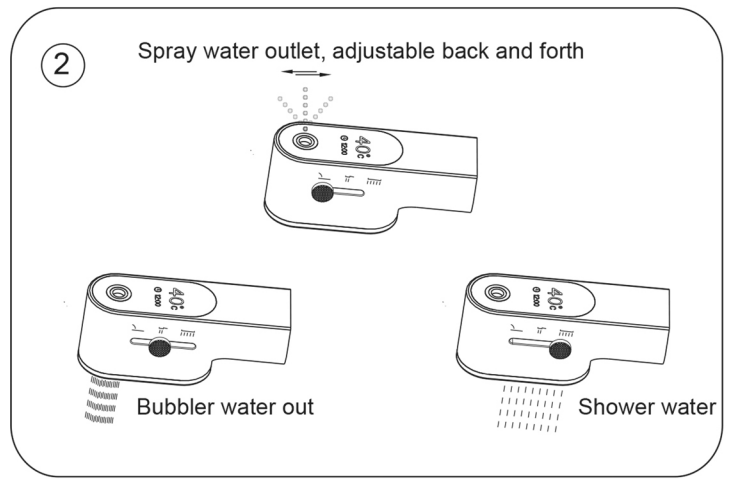
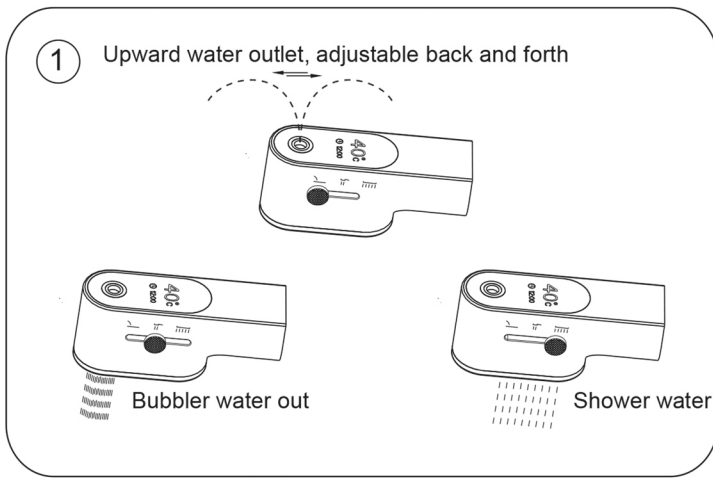


PRODUCT FUNCTION INTRODUCTION

1. This product is a single-handle double-control, suitable for mixing hot and cold water, and can adjust the water flow and water temperature.
2. The spout can be adjusted up and down by 100mm.
3. The spout can be rotated and pulled out 360 degrees in the water outlet state.
4. The three water outlet modes of upper spray, water column, and shower can be selected through the option key on the side.



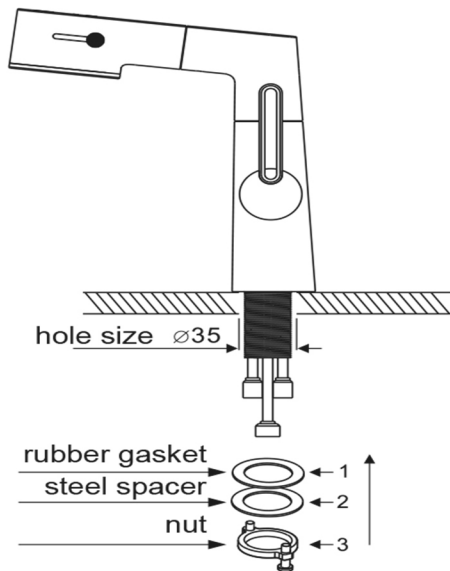
SCHEMATIC DIAGRAM OF THE WAY OF WATER OUTLET



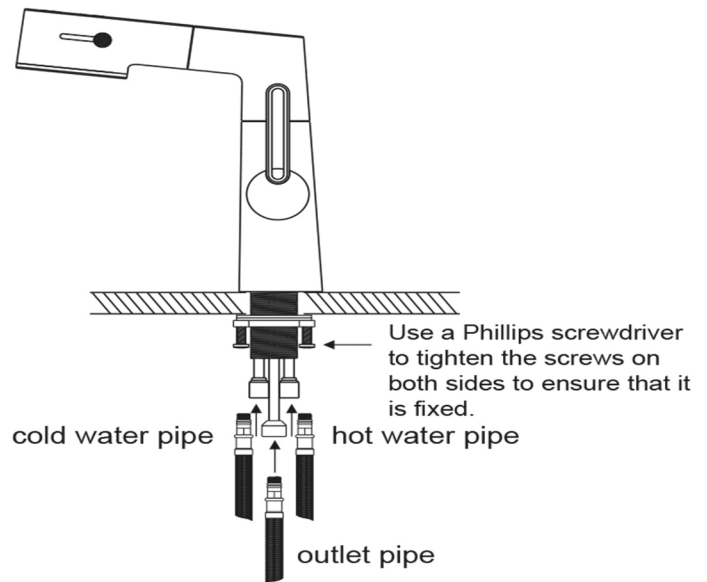
②

INSTALLATION STEPS

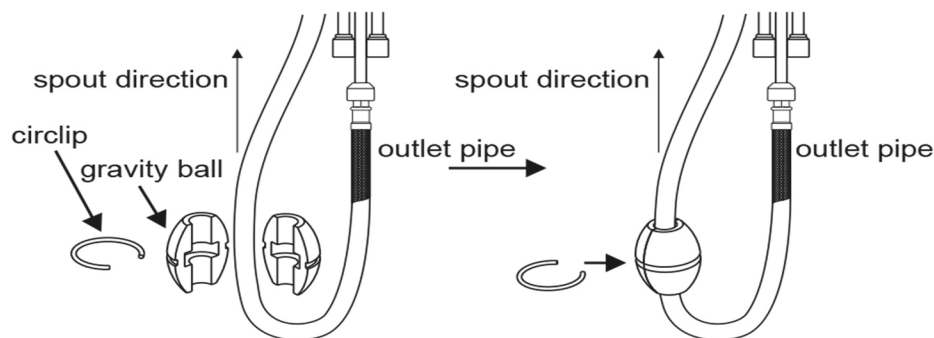
1. Fix the faucet according to the schematic diagram.



2. Connect the corresponding pipeline according to the schematic diagram.



3. How to install the gravity ball: Open the gravity ball, adjust the position (as shown in the picture), wrap the gravity ball around the water outlet hose, and push the circlip in the groove in the middle of the gravity ball.



4. After the installation is complete, turn on the switch and turn the handle switch left and right to check whether the hot and cold water outlets are normal; then turn off the switch and check whether there is water dripping from the connection and the water outlet; if you find that the product is working abnormally, please contact us in time.

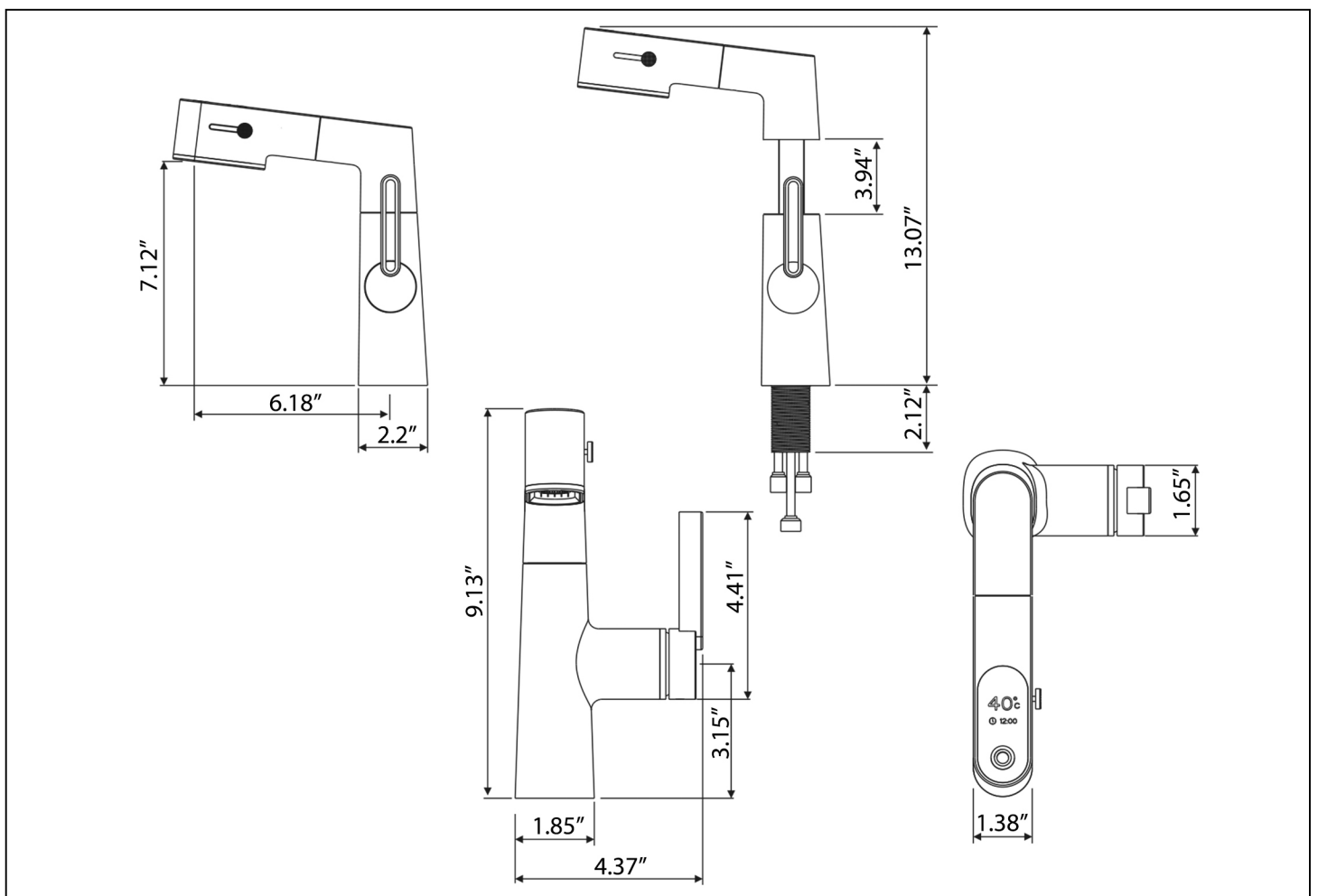
Precautions: Before installing this product, the residues of the hot and cold pipes must be rinsed to avoid clogging the product, affecting normal use or damaging the product.

INSTALLATION STEPS

► Test method

1. Turn the faucet handle to the closed position, open the water inlet valve, and check whether there is any leakage at all water inlet ports.
2. Open the faucet handle to the maximum, and open the water inlet valve to check whether there is leakage at the water outlet and the sprinkler connection port.
3. Operate the reversing valve several times to check the shower water condition and whether there is any leakage outside the connection.
4. If the water pressure is lower than 0.05M Pa (it is possible that the faucet drips while the shower sprinkles water, or the faucet reversing valve does not work), a booster pump should be installed in the pipeline.

INSTALLATION DIMENSION



CLEANING CARE

In order to keep the appearance of faucet clean, bright and good performance, please take care of the faucet as follows;

1. Rinse with water only and dry with soft cotton cloth;
2. Use mild liquid and colorless glass cleaner to remove surface dirt and scale film, or use polish without abrasive effect;
3. Do not use abrasive detergent, polish, emery cloth, paper towel or scraper, etc.;
4. Do not use acid cleaner, or cleaner and soap with insoluble gran etc.;
5. In the process of use, mud may accumulate in the bubbler and make the water flow show, The bubbler can be unscrewed, rinsed with water, and then installed back in place.



Please feel free to contact us if you have any questions. We will help to solve the issue together with you.

