

## Boy and Girl Drinking From Water Fountain with LED Light



## CONTENTS

Contents .....	1
What's Included.....	2
Features.....	3
Specifications.....	3
Assembling & Using Your Product.....	4
Replacement Parts.....	8
Troubleshooting.....	9
Caution.....	10
Warranty.....	11
Notes.....	12

## WHAT'S INCLUDED



Fountain  
(LED lights pre-installed)  
1x



Fountain  
Back Door  
1x



Fountain Pump  
1x



Transformer  
1x

*\*Pump may be packaged separately in an outer box located in the outer Styrofoam packaging.*

## LIMITED WARRANTY INFORMATION

Thank you for choosing product! We aim to please with our wide range of products including Fountains, Birdbaths, Statuary, Pond Supplies & More. All of our products are constructed from the highest quality materials. In the event that we have not achieved our usual standard of excellence, we will repair or replace, at our discretion, within the warranty period. A valid proof of purchase, with the purchase date clearly indicated, must be provided. Photos of defective merchandise will also be required to help distinguish the actual cause of the defect. Please read below for a detailed description of warranty coverage.

- **Water Damage**  
Our products are not manufactured to withstand extreme temperatures. Improper storage that allows water to freeze within a product may cause damage, is considered negligence, and will not be covered under this warranty. The use of "hard water," and/or caustic cleaners, can affect the painted or other finishes.
- **Paint & Color (Retention and/or Loss)**  
The use of water will cause natural erosion to the color. This area can be touched up using standard paint. The paint is designed to protect the entire finish against breakdown of color. As with any product, all finishes with time will gradually fade and discolor. The warranty will only cover against severe or complete fading, within the first year from date of purchase, with the above exclusion.
- **Procedure/Service**  
This may be necessary to distinguish between a partial or complete replacement of a defective product. The warranty does not cover any items with multiple parts; the warranty will ONLY cover the individual component of the unit/item that may be defective. Replacement parts can be made available to a consumer through the original selling party, or an approved parts retailer. If this is not an option, contact our customer service department. **Item is covered under one year limited warranty from the date of purchase. When requesting replacement parts due to a warranty claim after 30 days of purchase, credit card information will be requested for shipping charges.**
- **Not Covered Under Warranty**  
The limited warranty will NOT cover cases of damages due to:
  1. Damages caused in Transit
  2. Inadequate care and/or neglect
  3. Environmental and/or natural elements
  4. Immersion in water, unless specified
  5. Improper Installation/Storage and/or Maintenance

*This warranty is void if the product has been damaged by accident, misuse, negligence, improper installation and/or modifications have occurred. This includes any and/or all defects arising out of freezing water damage, hard water damage, failure to keep the unit clean and free of harmful additives such as bleach, chlorine, etc.... which affects the paint and/or parts. This warranty also does not cover any additional charges or installation, removal, disposal and/or shipping costs or consequential damage associated with any warranty claim.*

## REPLACEMENT PART

## ITEM#

- Submersible Stream Pump
- Replaceable Transformer
- Replacement LED Light
- Replacement Back Cover

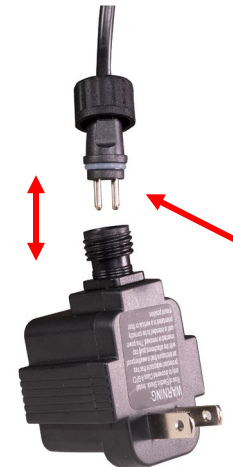
## ALSO AVAILABLE FROM

- **Fountain Care Formula**  
Foam and scale remover for indoor and outdoor fountains.
- **UV Acrylic Sealer**  
Provides protective clear coating for all painted surfaces.
- **Touch Up Paint Kit**  
Includes primer, thinner, 7 paint colors, applicator and sealer.

3. From the back opening of the fountain connect the vinyl tubing from inside the fountain into the water pump, then place the pump back into the fountain.



4. Pull out the LED light cord plug through the back opening & connect to the transformer.



### **Quick Tip #2**

Check all light connectors to make sure they are tight. Fountains with multiple lights have additional connections inside the fountain.

5. Gently pour water into the fountain basin, being careful not to overflow and cause splashing. Make sure the water completely submerges the pump and the water runs clear during operation.

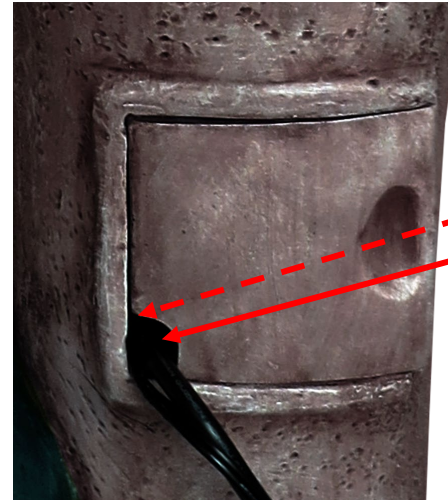
**NOTE:** We recommend that you use distilled water to prevent scale build-up. The first time you operate the pump it can take up to 5 minutes for the air to be completely expelled and water begins to flow properly



6. Plug the pump and light cord into your local power supply. Make sure that there is no water around the plug & always keep the power source in a dry place.



7. You can now adjust the water pump to your flow preference. (see Quick Tip #1) Once set, install the Back Door Cover by sliding it into the designated opening.

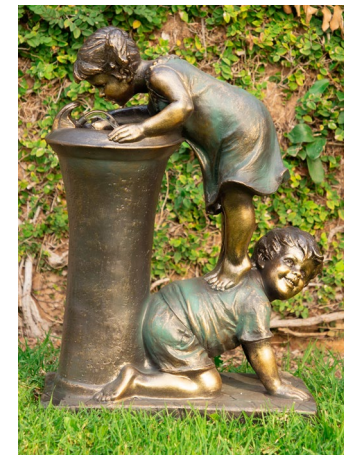


### **Quick Tip #3**

Make sure your pump and light cords are tucked neatly into the cord slot.

8. Congratulations, your fountain is now complete. Don't forget to add water regularly as water will evaporate over time.

**Relax and enjoy your new fountain.**



## ASSEMBLING & USING YOUR PRODUCT

Unpack all components carefully. Please check to ensure all parts have been removed from the packaging. *\*Some splashing may occur when the product is in use.*

1. Place the fountain base on a smooth & level surface. Allow enough space to access the pump.



2. Remove the pump from its packaging and adjust the flow control to the lowest setting to avoid splashing until the fountain is completely assembled.



### Quick Tip #1

Slide the adjuster left to decrease the water flow.  
Slide the adjuster right to increase the water flow.

## TROUBLESHOOTING

If you have any questions and/or problems, please contact the retail store you purchased this fountain.

### • If your pump fails to run

- Check the circuit breaker or try a different outlet to make sure the pump is receiving electrical power.
- Check the pump discharge and tubing for any kinks and/or obstructions
- Any buildup obstructing the water flow can be flushed with a garden hose
- Check the rotor by removing the front cover & plate to access the impeller area. Turn the rotor and make sure that the rotor is not jammed or broken

### • If your pump “spews”

- Check the water level to make sure the pump is completely submerged and there is enough water in the basin to operate your fountain. Not having enough water will cause your pump to spew

### • If your pump is making abnormal loud noises

- Disconnect the pump from the electrical power supply and remove the front cover & plate
- Carefully grip the impeller and gently pull the impeller/rotor assembly out of the pump housing
- Rinse the impeller/rotor assembly and clean the cavity with clean water. If breakage or damage is found, contact your local retailer for parts.



## CAUTION



- Always unplug the pump from the electrical outlet before cleaning & handling
- Use with clean water only, do not place the fountain and/or parts in any other liquid.
- Periodically change water & clean the pump to keep free from microorganisms
- Disconnect and store the unit in a dry place if not in use for an extended period of time, or during freezing weather.
- Do not operate the fountain in temperatures below 41° F / 5° C.
- Do not operate with water above 90°F / 30°C.
- Do not lift, carry or pull the pump by the power cord.
- Do not exceed the maximum voltage & wattage on transformer.
- **NEVER LET THE PUMP RUN DRY.**

## FEATURES

- Flowing water adds a soothing sound to any



- Beautiful bronze finish

- LED light in the basin of this fountain are long-lasting, energy-efficient, and creates a stunning nighttime display

## SPECIFICATIONS

Power Requirements.....Standard Household 120V  
Water Capacity..... 2 2/3 US Gallons / 10 Liters  
Tubing Diameter.....1" I.D.