

**INSTRUCTION MANUAL ENCLOSED**

**ATTENTION**

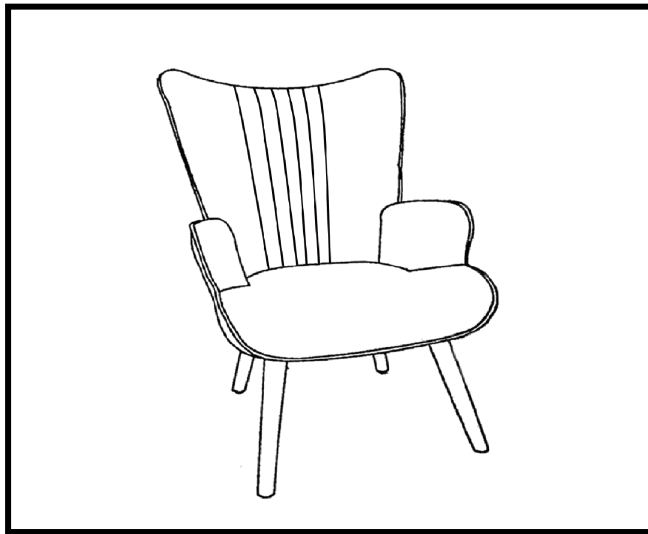
**IF YOU HAVE ANY PROBLEMS OR QUESTIONS, EMAIL OR CALL  
CUSTOMER SERVICE BEFORE YOU RETURN THIS PRODUCT TO THE  
STORE WHERE IT WAS PURCHASED.**

\*\*When emailing Customer Service, please include your Order Number and platform of purchase in the email subject for quicker assistance.

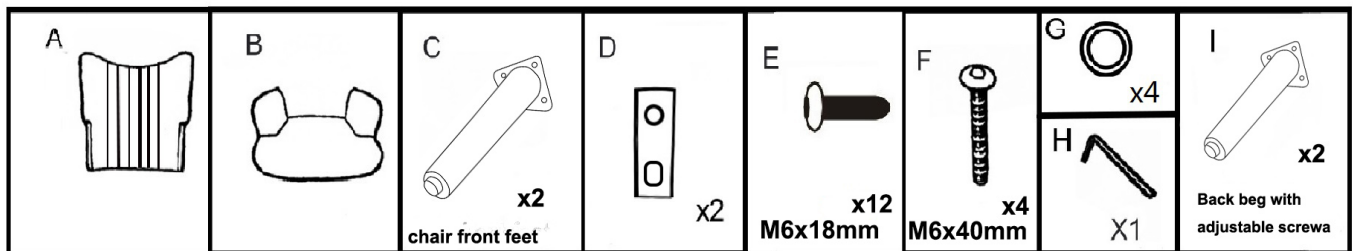
**INSTRUCTION MANUAL ENCLOSED**

# INDOOR ACCENT CHAIR

## INDOOR ACCENT CHAIR ASSEMBLY INSTRUCTION



Part	DESCRIPTION	Quantity
A	Back	1
B	Seat	1
C	Feet (chair front feet)	2
D	Parts	2
E	Bolts(M6x18mm)	12
F	Bolts(M6x40mm)	4
G	Washer	4
H	Allen Key	1
I	Feet(back leg)	2



# PLEASE READ AND FOLLOW ALL SAFETY TIPS

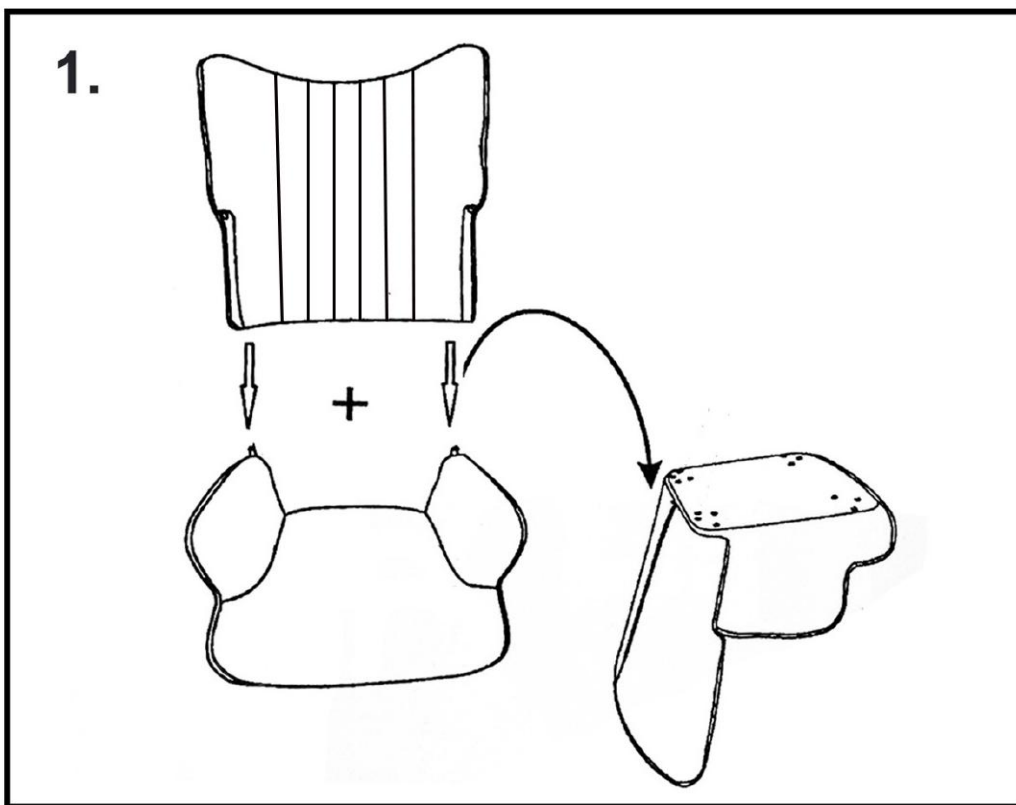
## GETTING STARTED

1. Before assembly, CAREFULLY use scissors or utility knife to cut and unwrap all parts. Make sure you do not discard the hardware.
2. Make sure that you have all the parts listed. If you are missing any parts, please contact Customer Service. Please identify the parts you need and model number. Make sure to include your name and address.
3. Please include your Order Number and platform of purchase in the email subject, and one of our customer service representative will get back to you.

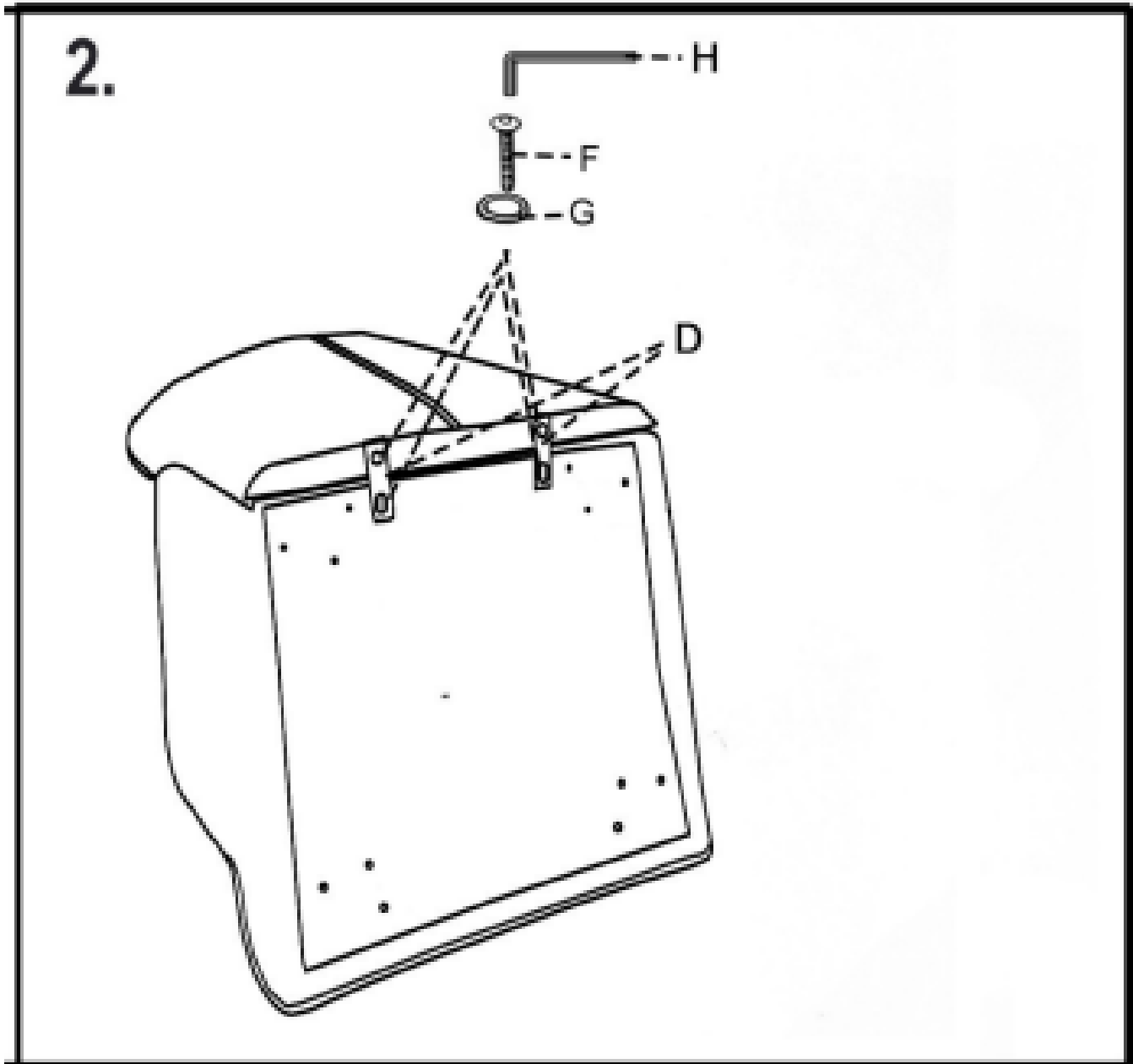
### Warm Tips:

1. The plastic covers on some metal parts are just for product protection. Please remove it before assembly.
2. Please follow the sequence of AI during assembly.
3. Do not tighten the screws until all of them are in right positions.

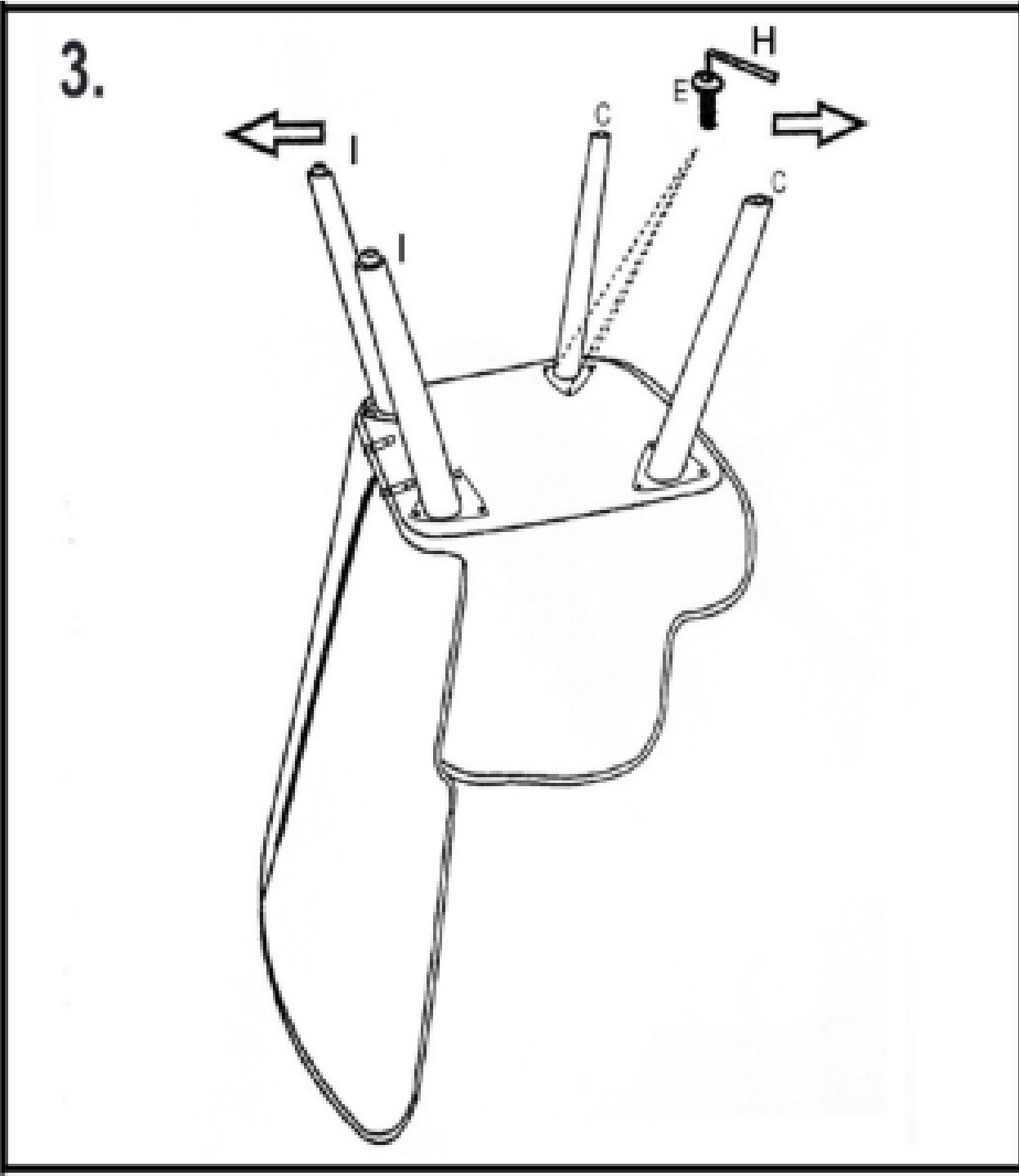
1. Insert the backrest (A) into the seat (B),  
And place the bottom of the product face up. (Photo 1)



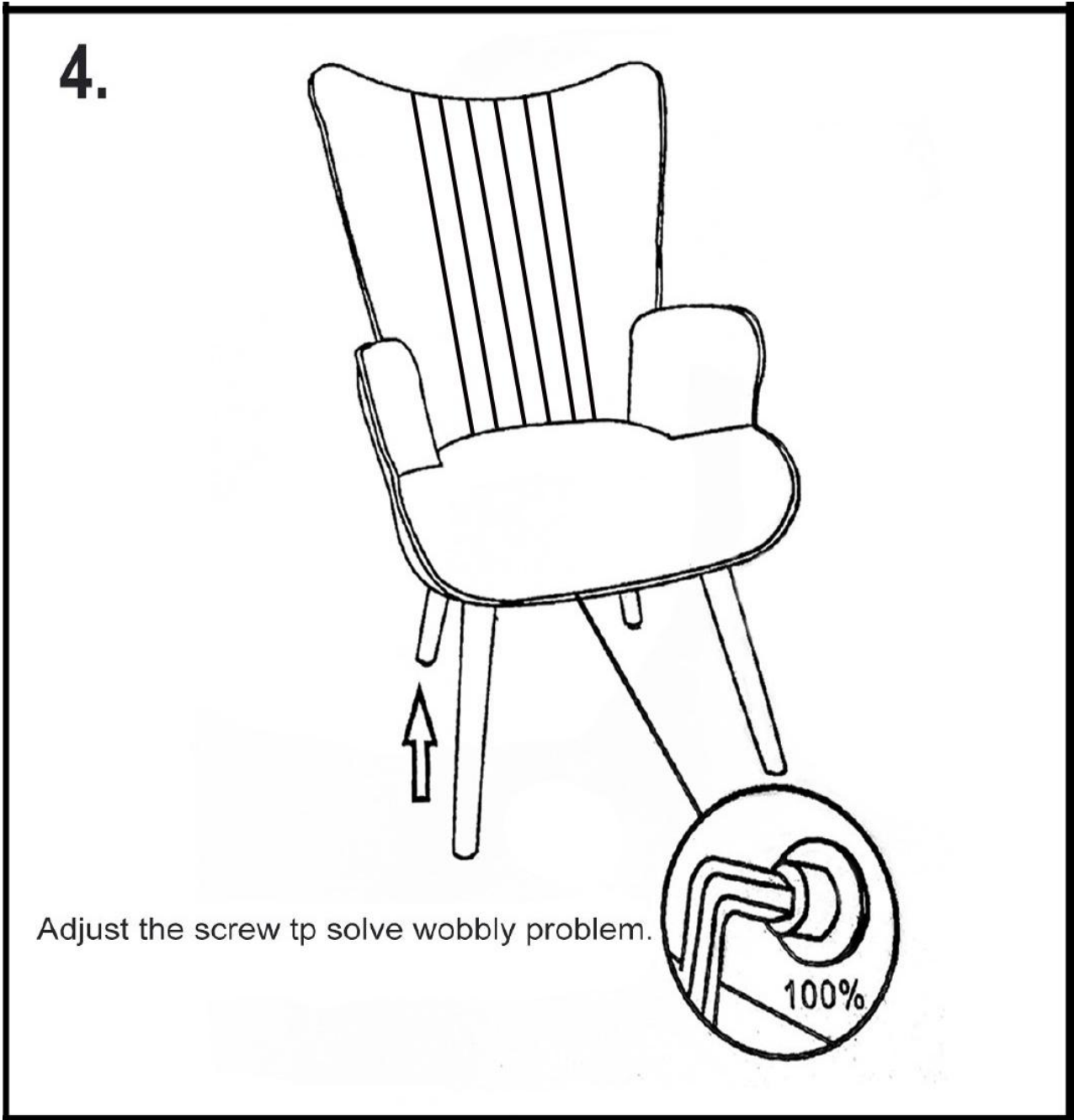
2. Position the Component(D) to the backrest and seat by pre-drilled threads. Use Allen key(H) to fasten bolt(F) with Washer(G). It should have 4 bolts fastened. Do not tighten bolts. (photo 2)



3. Place the Front foot (C) and Rear foot (I) to the seat by pre-drilled threads. Use Allen key(H) to fasten Bolt(E). It should have 12 bolts fastened. Do not tighten bolts. (photo 3)



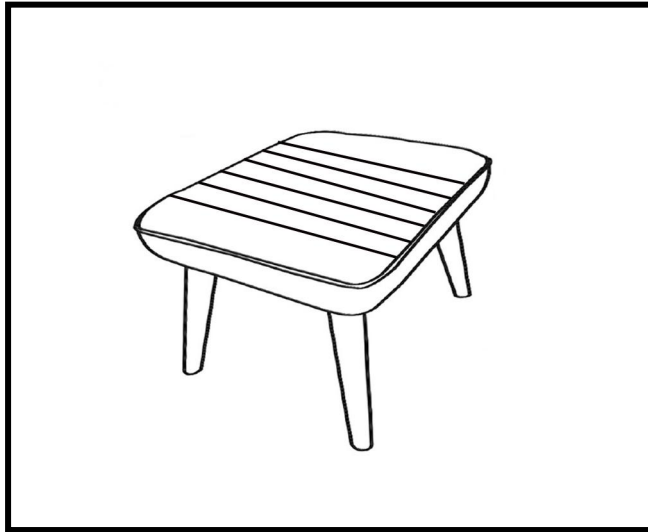
4. Tighten all bolts!



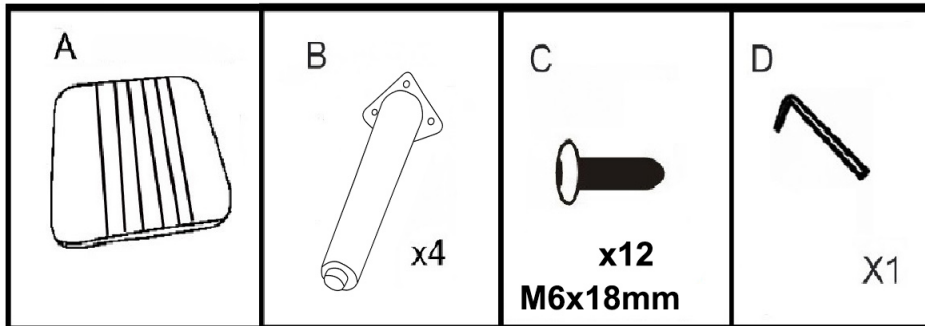
Till now you have finished the whole assembly and enjoy your furniture!

# INDOOR OTTOMAN

## INDOOR OTTOMAN ASSEMBLY INSTRUCTION



Part	Description	Quantity
A	Seat	1
B	Feet	4
C	Bolts(M6x18mm)	12
D	Allen Key	1



# PLEASE READ AND FOLLOW ALL SAFETY TIPS

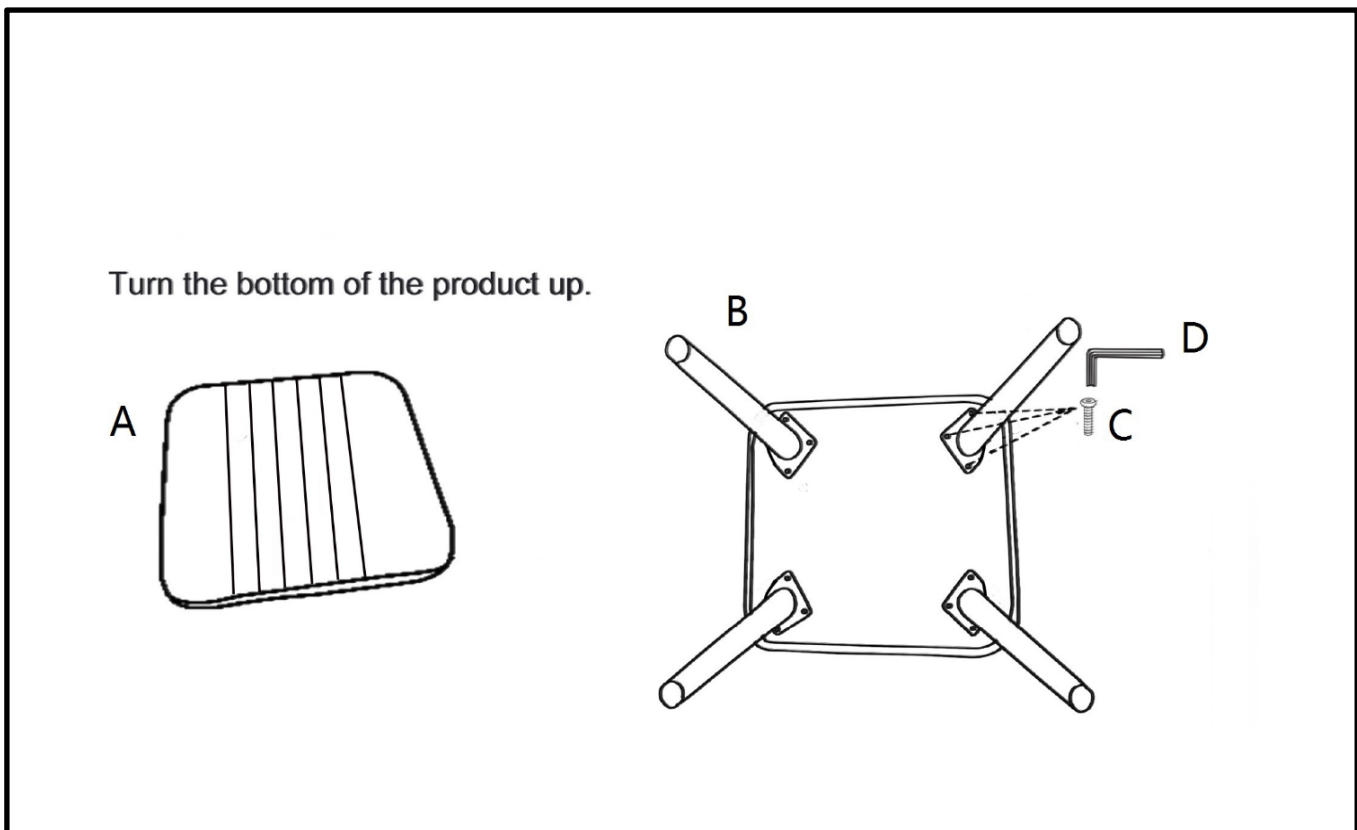
## GETTING STARTED

1. Before assembly, CAREFULLY use scissors or utility knife to cut and unwrap all parts. Make sure you do not discard the hardware.
2. Make sure that you have all the parts listed. If you are missing any parts, please contact Customer Service. Please identify the parts you need and model number. Make sure to include your name and address.
3. Please include your Order Number and platform of purchase in the email subject, and one of our customer service representative will get back to you.

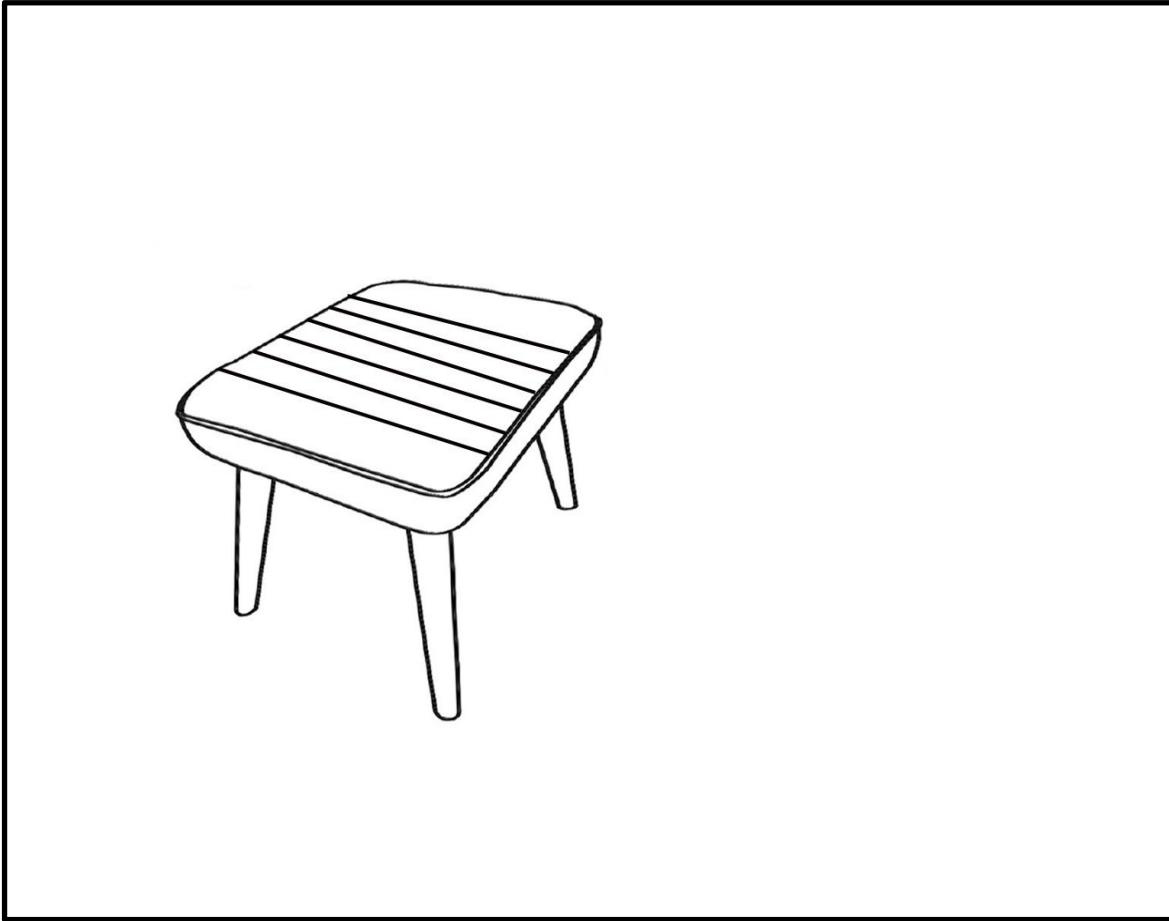
### Warm Tips:

1. The plastic covers on some metal parts are just for product protection. Please remove it before assembly.
2. Please follow the sequence of AI during assembly.
3. Do not tighten the screws until all of them are in right positions.

1. Turn over the seat (A). Position the feet (B) to the seat by pre-drilled threads. Use Allen key (D) to fasten Bolt (C). It should have 12 bolts fastened. Do not tighten bolts. (Photo 1)



## 2. FINISH!



Till now you have finished the whole assembly and enjoy your furniture!