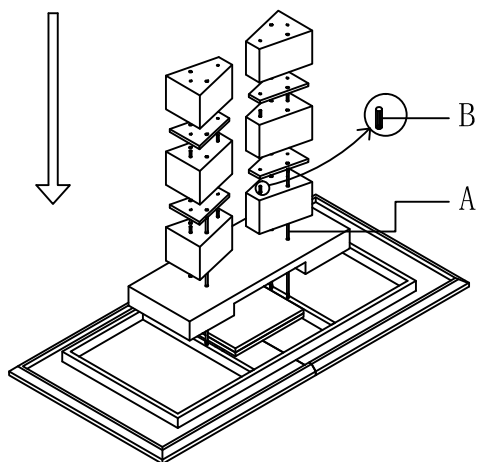
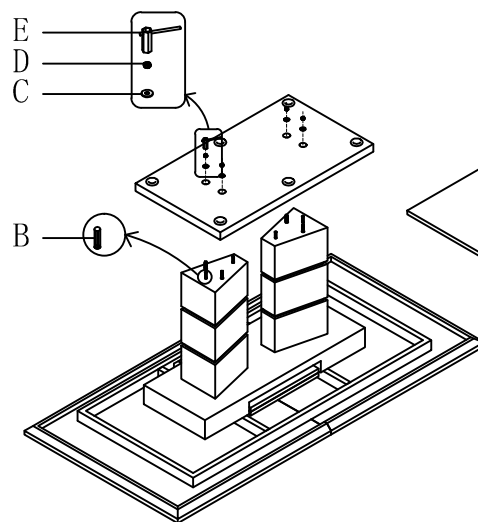


# ASSEMBLY INSTRUCTION

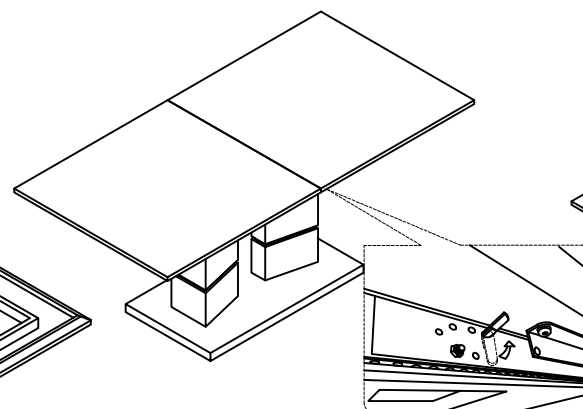
STEP1



STEP2

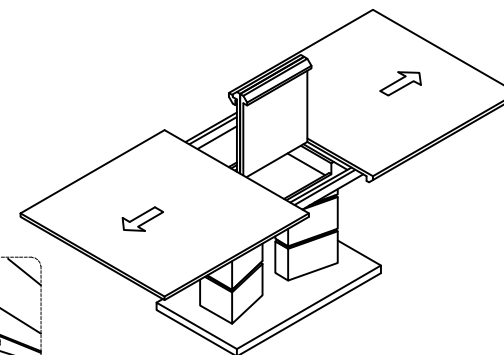


STEP3



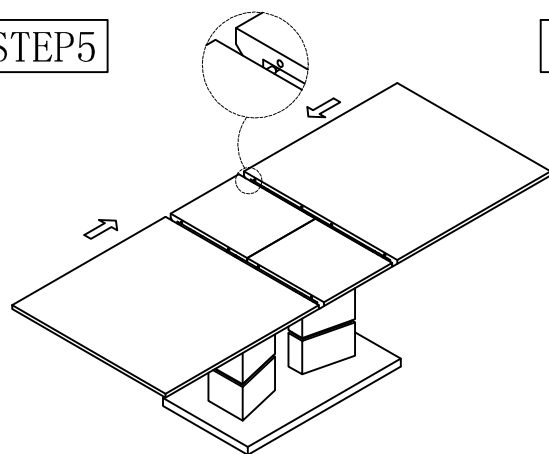
There are 2 locks  
on the table,  
one on each side.  
Unlock and open  
as pictured

STEP4

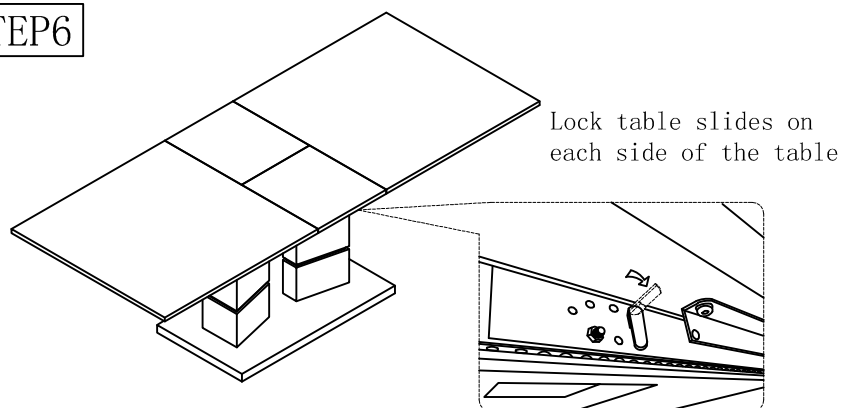


ATTENTION:BEFORE OPENING  
THE LEAF MAKE SURE TO  
OPEN THE TABLE COMPLETELY.

STEP5



STEP6



Lock table slides on  
each side of the table

NOT FOR COMMERCIAL USE

A		4pcs
B		12pcs
C		4pcs
D		4pcs
E		1pc