

# WARNING

PLEASE READ ALL SAFETY WARNINGS AND INSTRUCTIONS CAREFULLY. PLEASE CHECK CAREFULLY BEFORE INSTALLATION

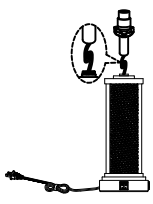

## QUICK RESPONSE SERVICE

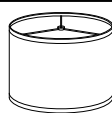


If you receive the lamp has damaged/defective/missing part problem, please feel free to contact us (through your order) and we will respond within 12 hours, solve the problem AS SAP. We are happy to provide better service to you.

## SPECIFICATION PARAMETERS

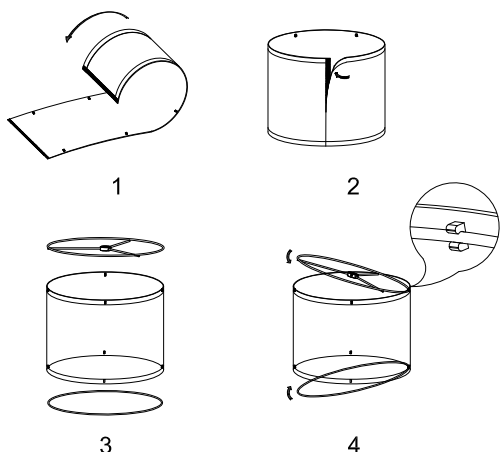
\* Material: Metal, Glass and Fabric

## PACKING LIST

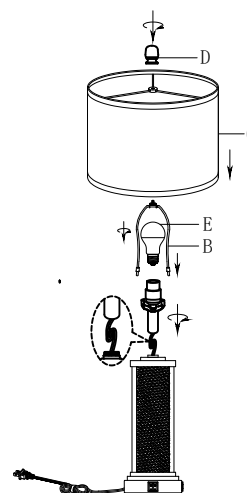
PIECE	DESCRIPTION	PICTURE	QUANTITY
A	Lamp body		X 2
B	Harp		X 2

PIECE	DESCRIPTION	PICTURE	QUANTITY
C	Lamp Shade		X 2
D	Finial		X 2
E	Bulb		X 2

## INSTALLATION STEPS



Step 1: Attach the round lampshade  
Step 2: Clip the round metal piece in the hook



Step 1: Fold up the Extra cord and stuff into socket tube  
Step 2: Press the Lamp Holder onto Lamp body  
Step 3: Press the harp(B) onto saddle  
Step 4: Clip the round metal piece in the hook  
Step 5: Assemble the lampshade(C)  
Step 6: Screw the finial(D) into the harp(B)  
Step 7: Install the bulb(E) onto the socket

## WARRANTY POLICY

Warranty: 1 Year Warranty, We provide 24 hour online service, if you have any question, please feel free to contact us.