

# Side Cabinet

## Assembly Instruction



THIS INSTRUCTION BOOKLET CONTAINS IMPORTANT SAFETY INFORMATION.  
PLEASE READ AND KEEP FOR FUTURE REFERENCE.

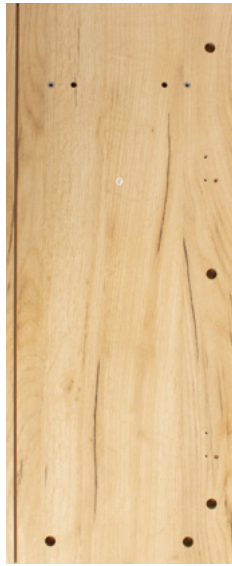
Parts list and Diagram



①  
1PC (790\*350)



②  
1PC (652\*325)



③  
1PC (794\*323)



④  
1PC (795\*325)



⑤  
1PC (666\*325)



⑥  
1PC (650\*60)



⑦  
1PC (650\*60)



⑧  
1PC (795\*60)



⑨  
1PC (795\*60)



⑩  
1PC (601\*370)

# Parts list and Diagram



⑪

3PC (274\*199)



⑫

3PC (215.5\*120)



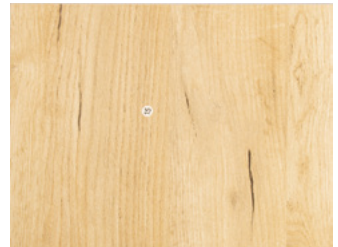
⑬

3PC (300\*120)



⑭

3PC (300\*120)



⑮

3PC (225.5\*294)



⑯















1PC (676\*375)



⑰

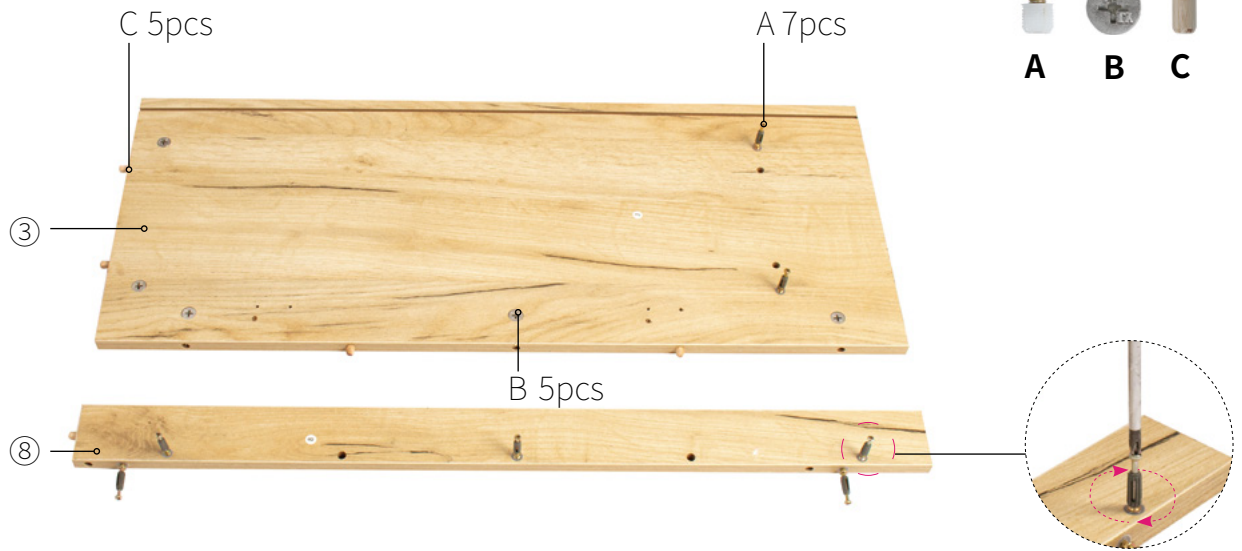
1PC (676\*279)

# Parts list and Diagram

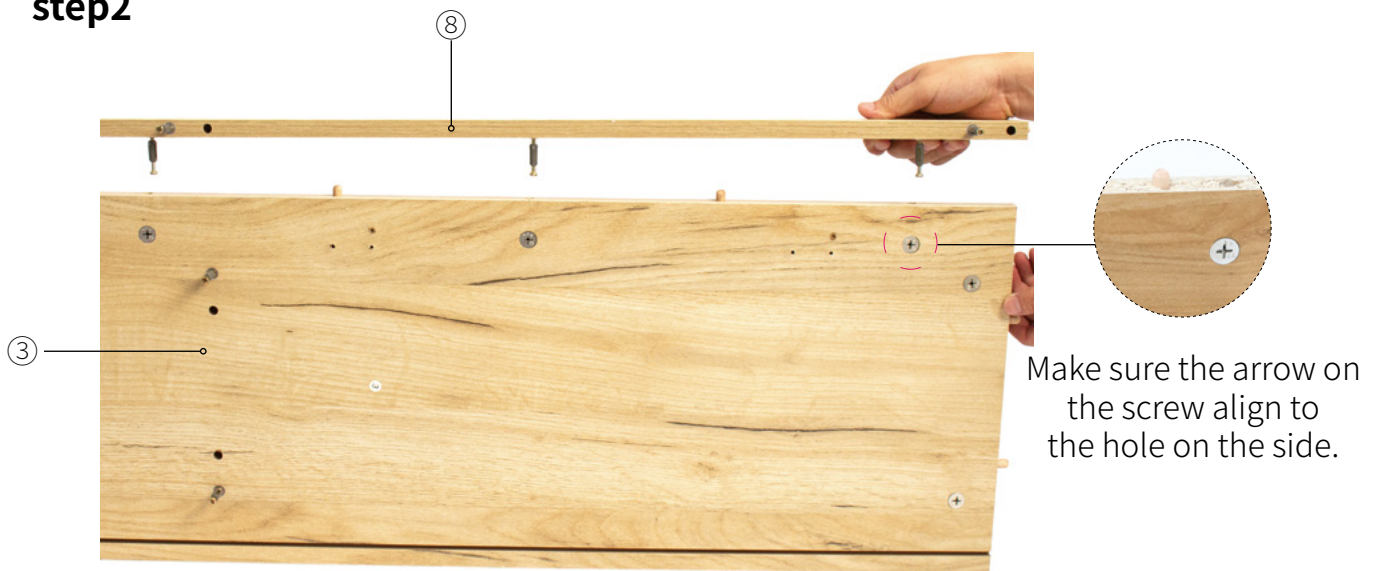
							
<b>A</b> 38PCS	<b>B</b> 38PCS	<b>C</b> 22PCS	<b>D</b> 3PCS(300mm)	<b>E</b> 3PCS(300mm)	<b>F</b> 3PCS(300mm)	<b>G</b> 3PCS(300mm)	<b>H</b> 42PCS(3.5*14)
							
<b>I</b> 12PCS (3.5*35)	<b>J</b> 3PCS (64mm)	<b>K</b> 1PCS	<b>L</b> 1PCS (4*20)	<b>M</b> 15PCS	<b>N</b> 15PCS(3*12)	<b>O</b> 2PCS	

# Assemble steps

## step1

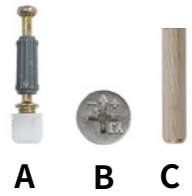


## step2

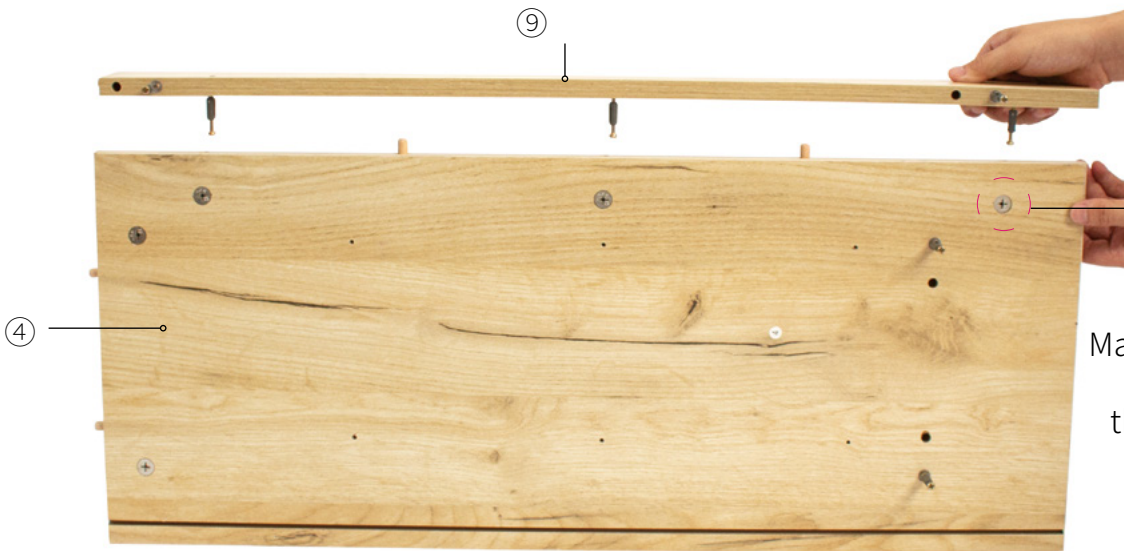


Assemble steps

step3



step4



Make sure the arrow on the screw align to the hole on the side.



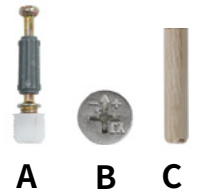
## Assemble steps

### step5

C 6pcs

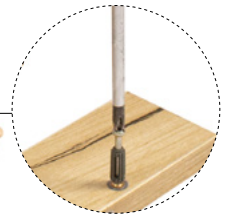
A 4pcs

②



B  
8pcs

⑦

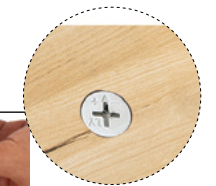


### step6

⑦

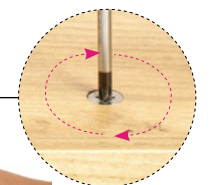


②



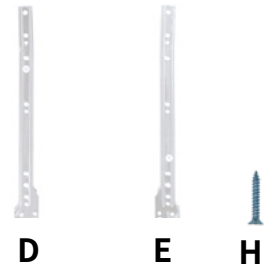
Make sure the arrow on the screw align to the hole on the side.

⑦

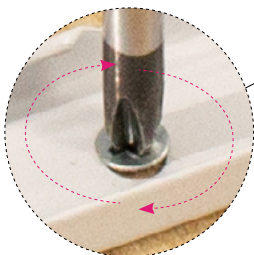
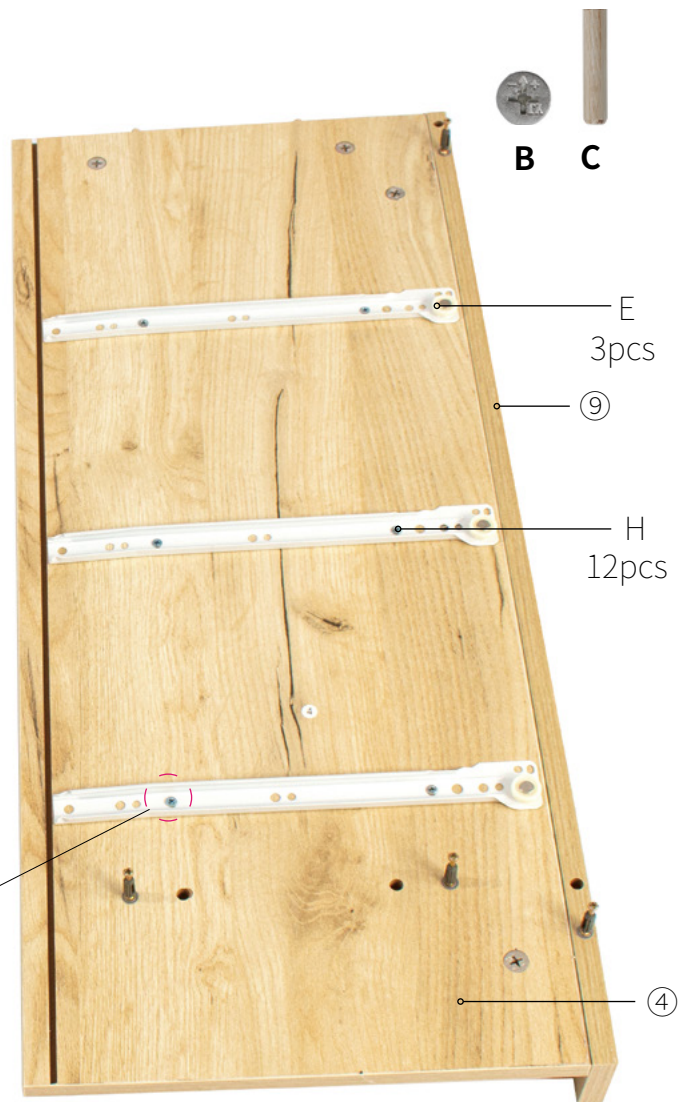


# Assemble steps

## step7



## step8

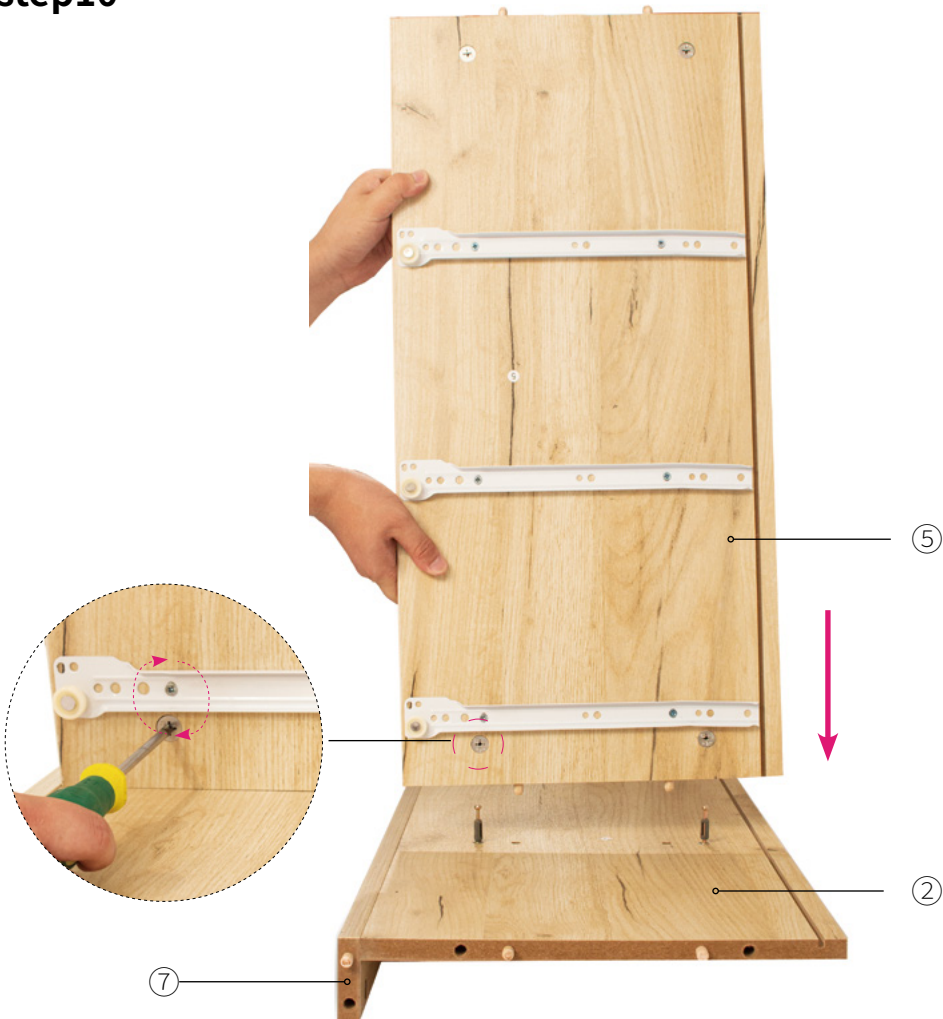


# Assemble steps

## step9

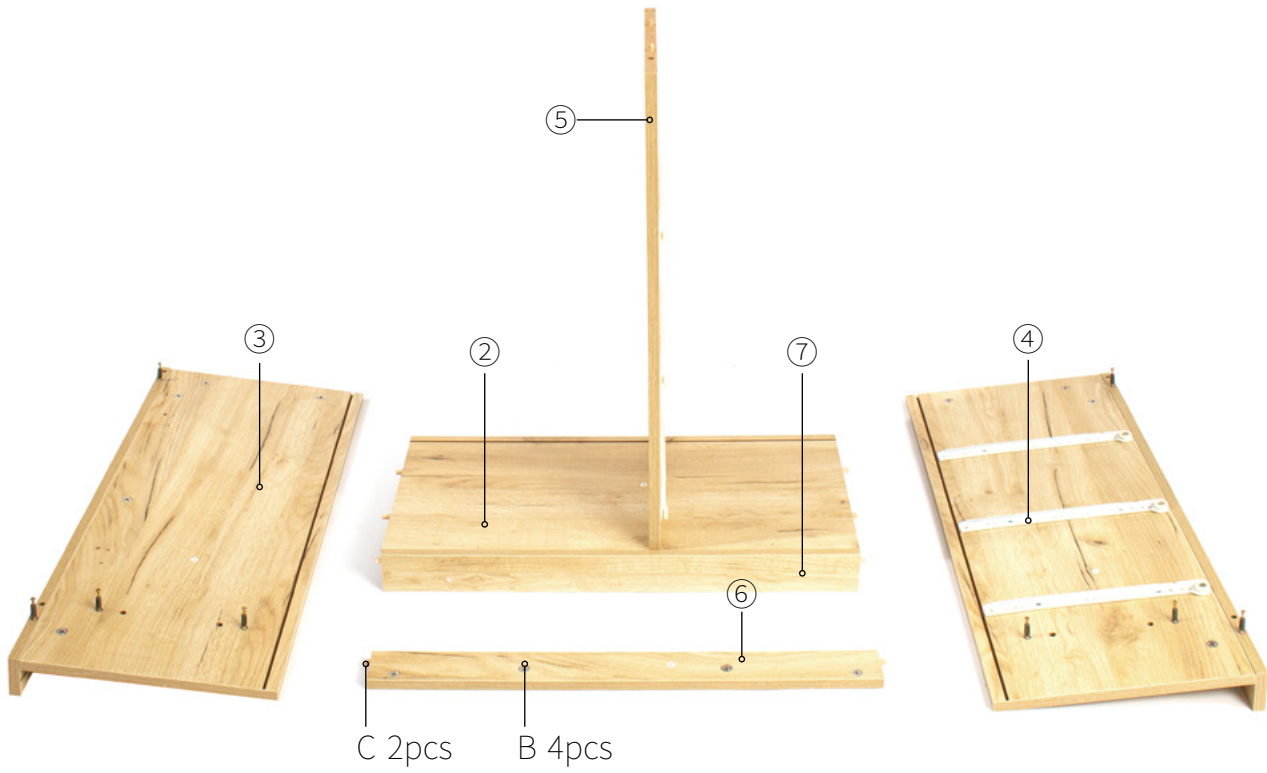


## step10

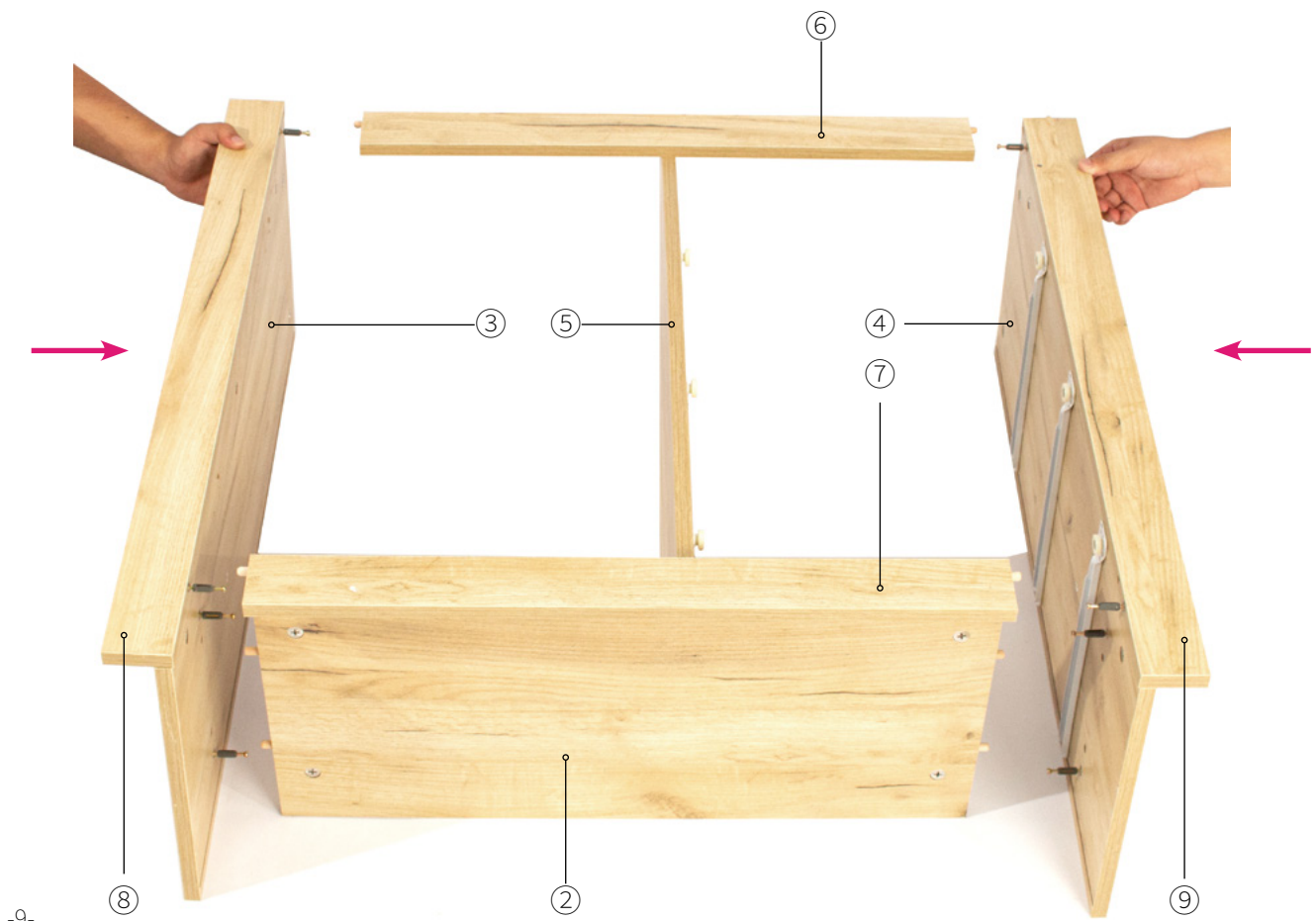


## Assemble steps

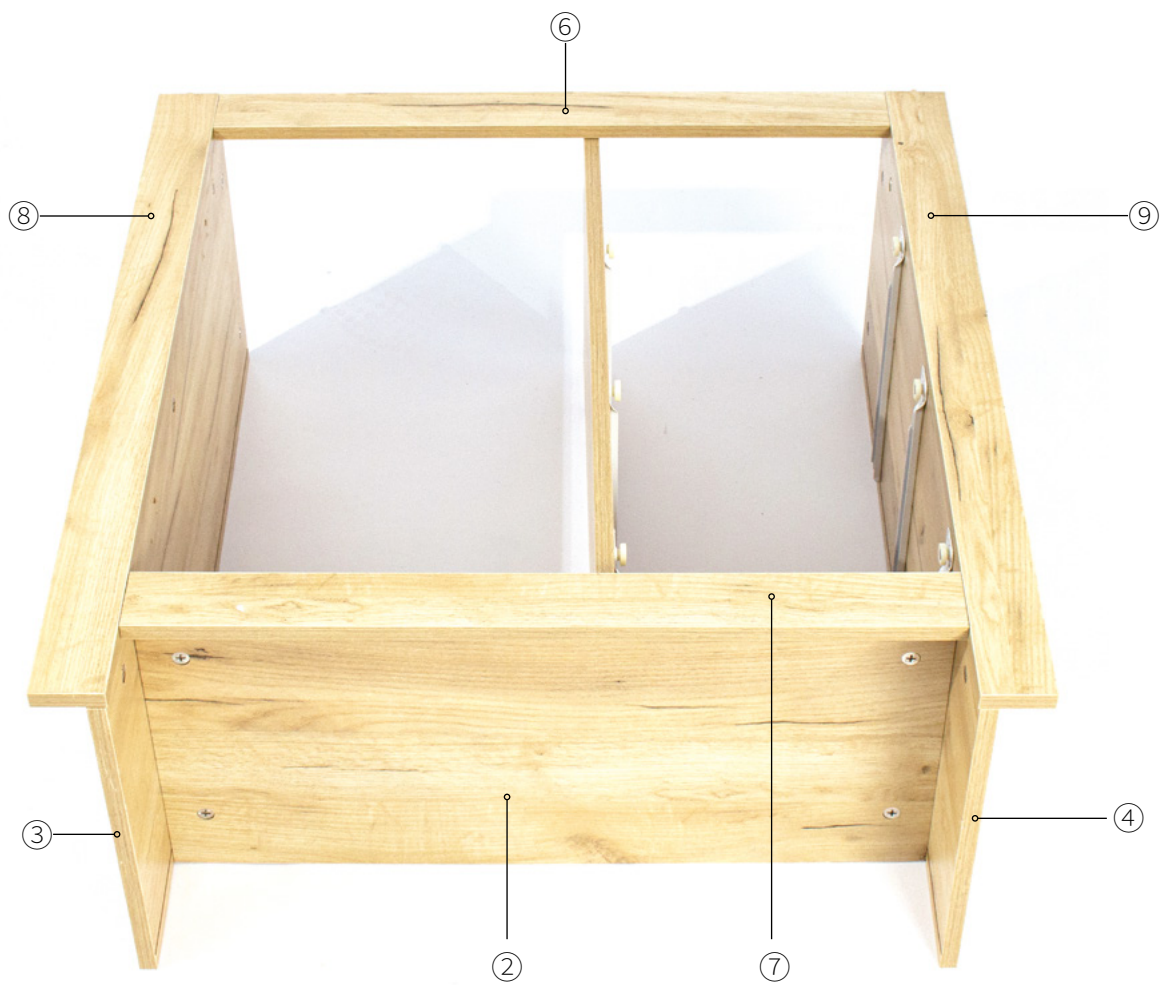
### step11



### step12



## Assemble steps

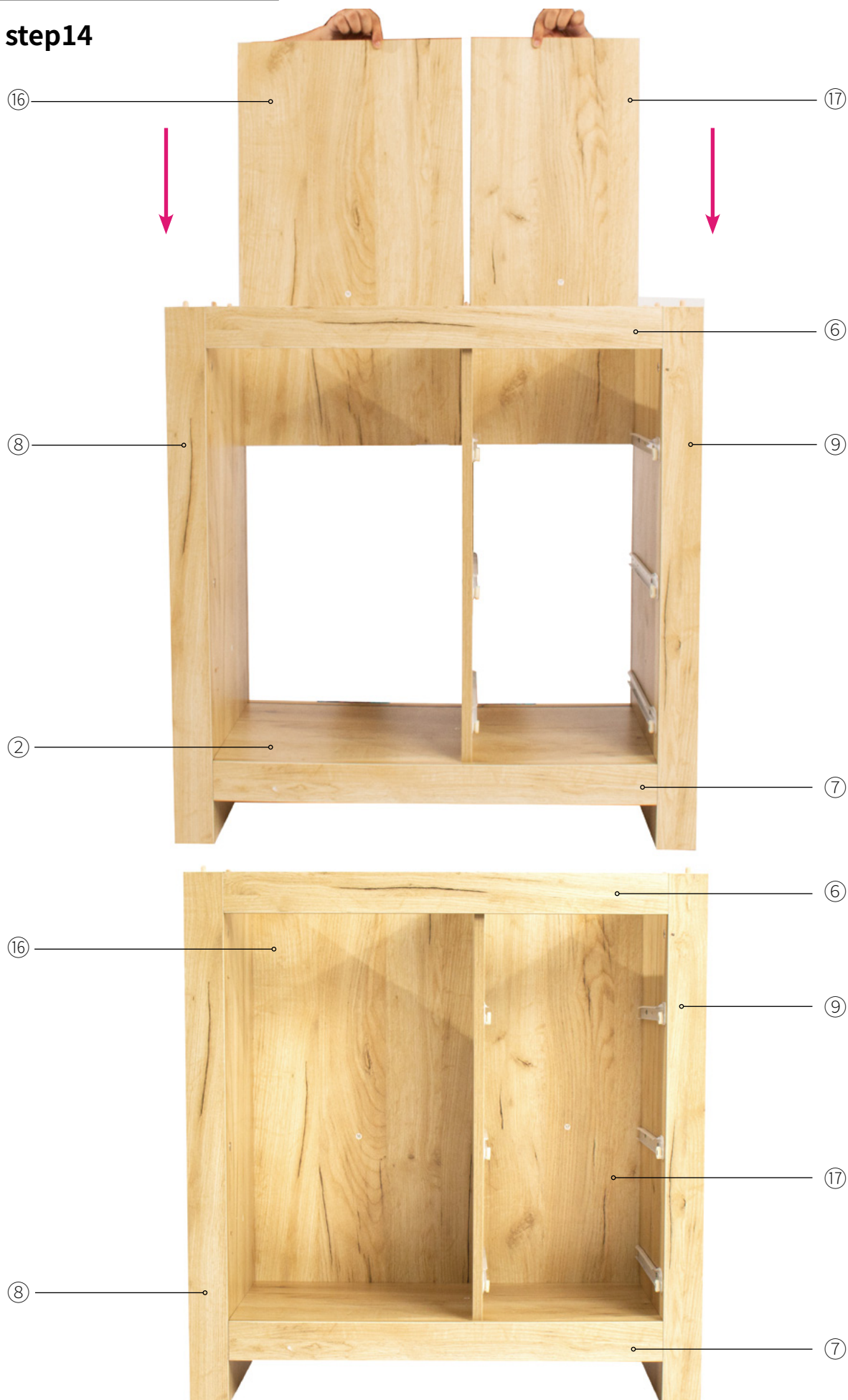


### step13



## Assemble steps

### step14



# Assemble steps

## step15

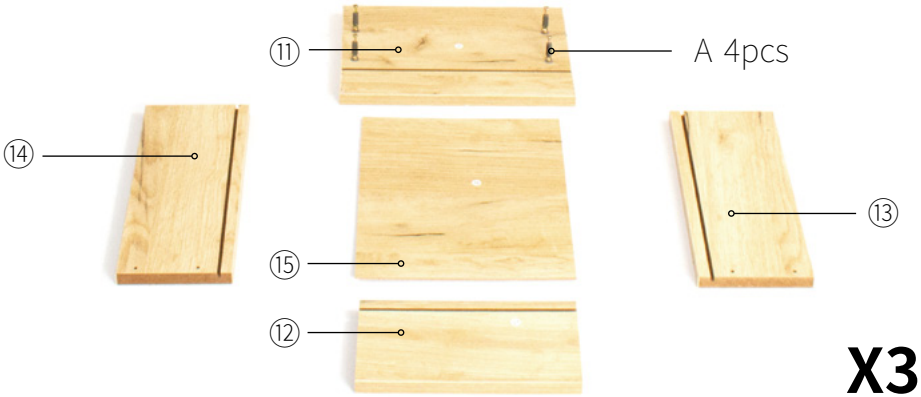


## step16

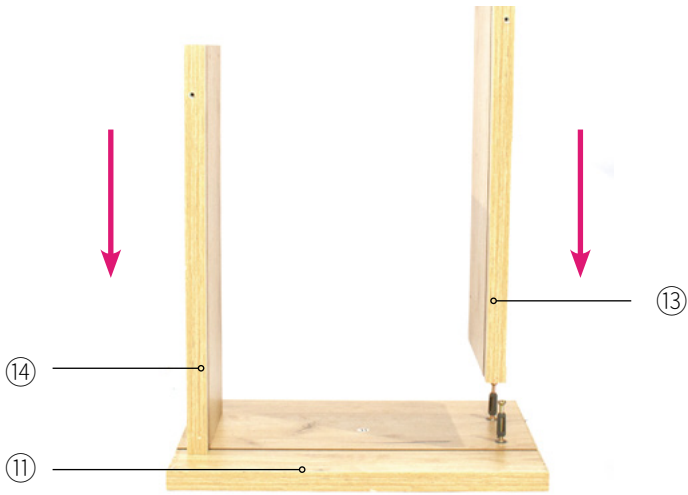


Assemble steps

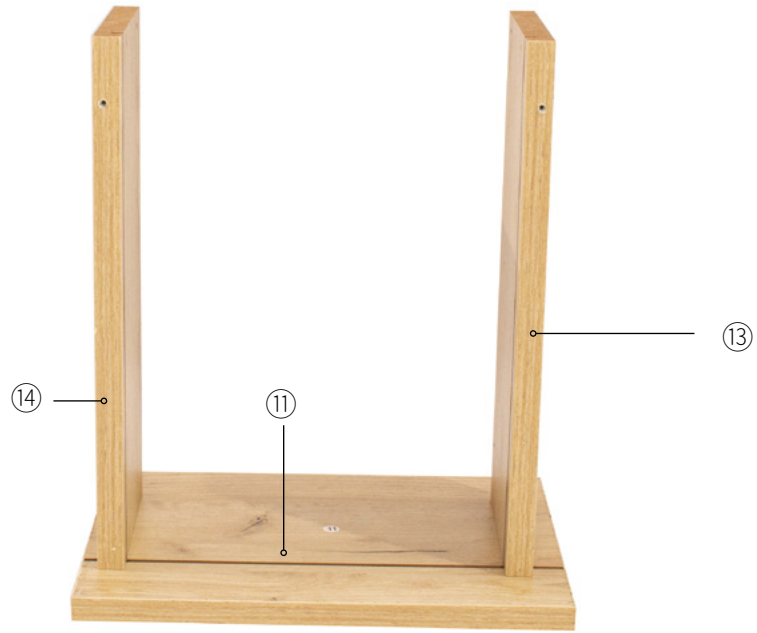
step17



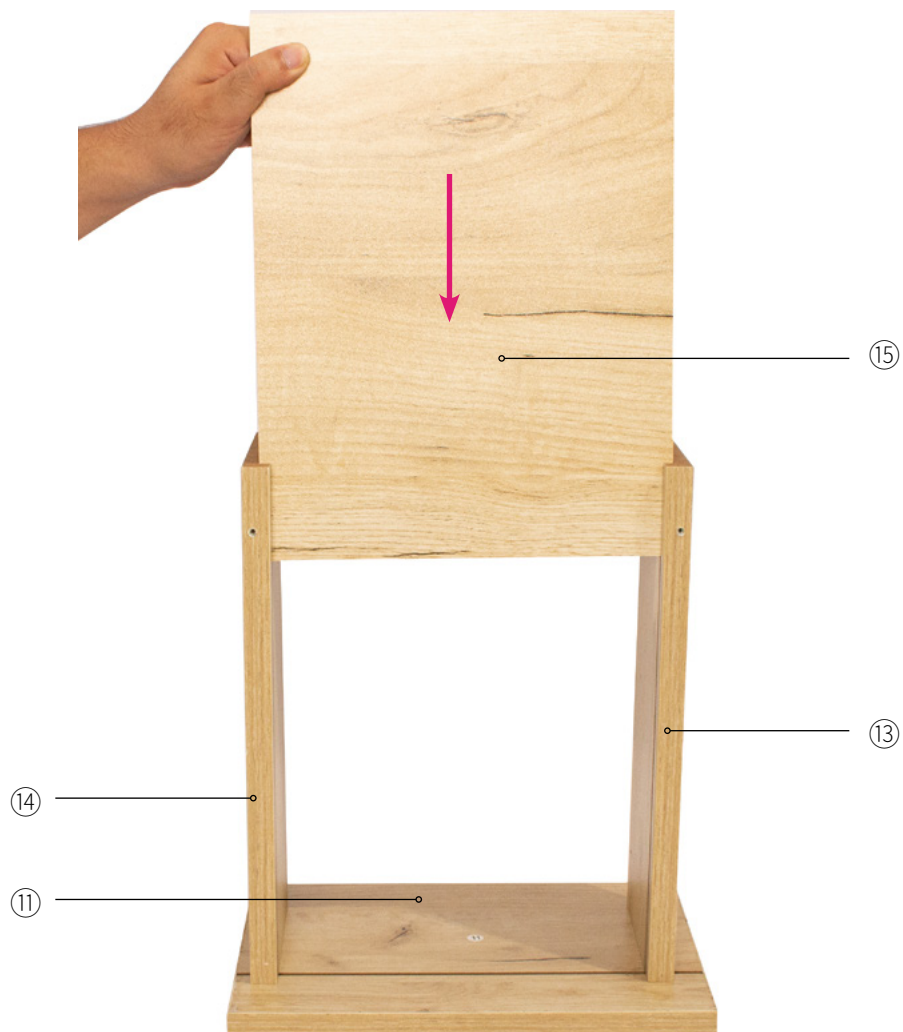
step18



## Assemble steps



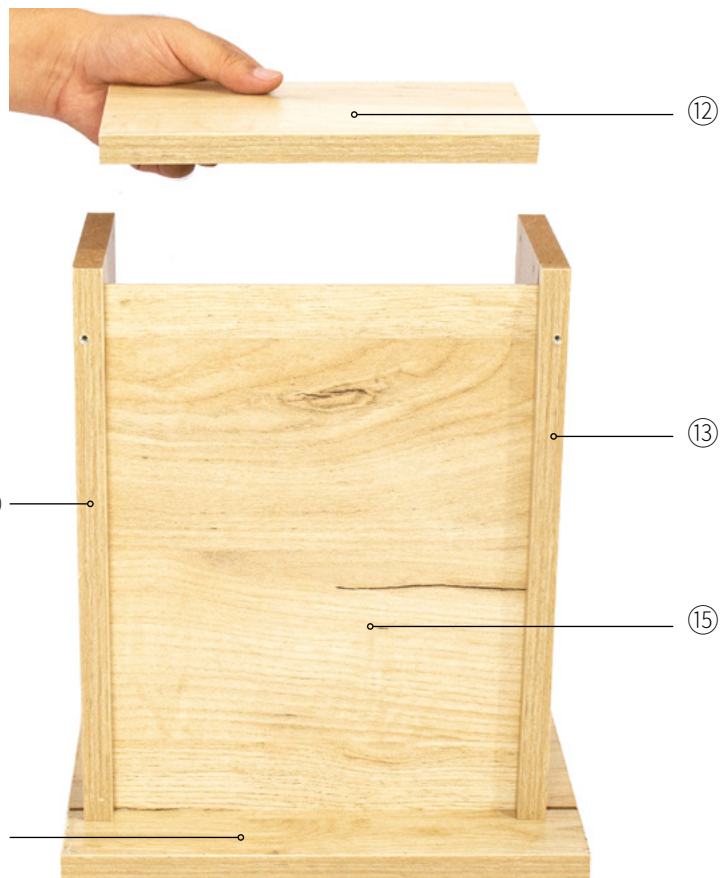
### step19



## Assemble steps

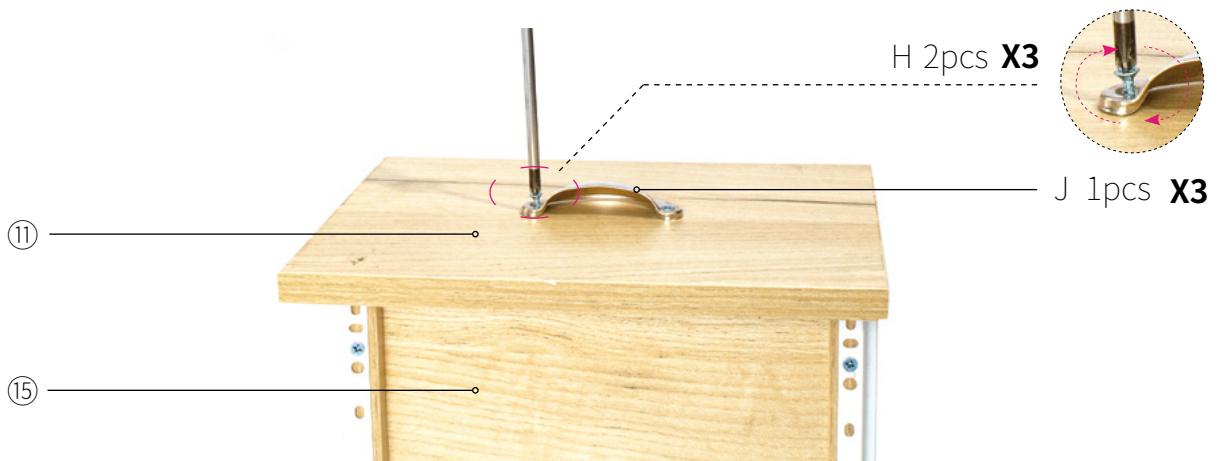
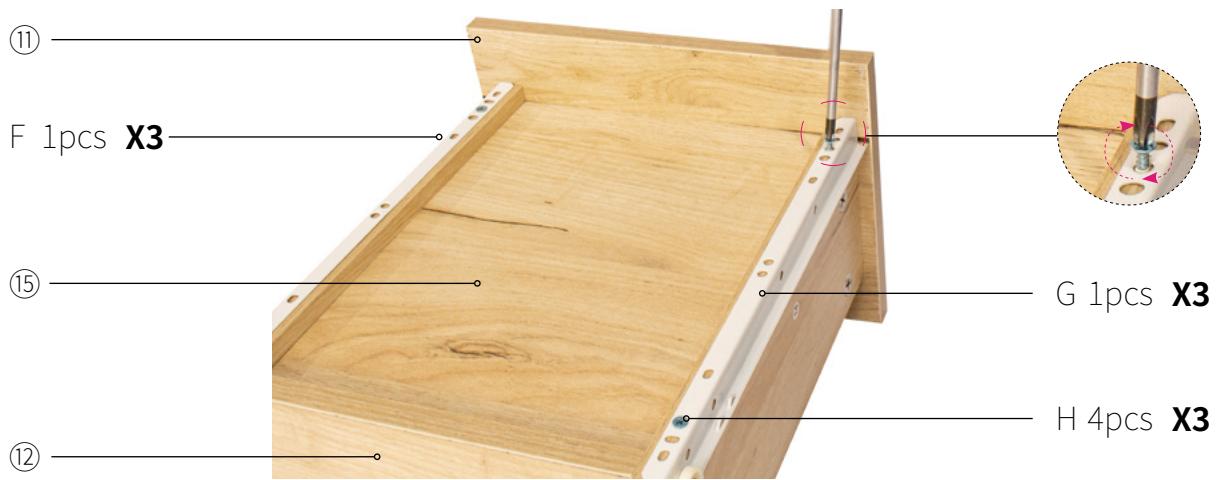
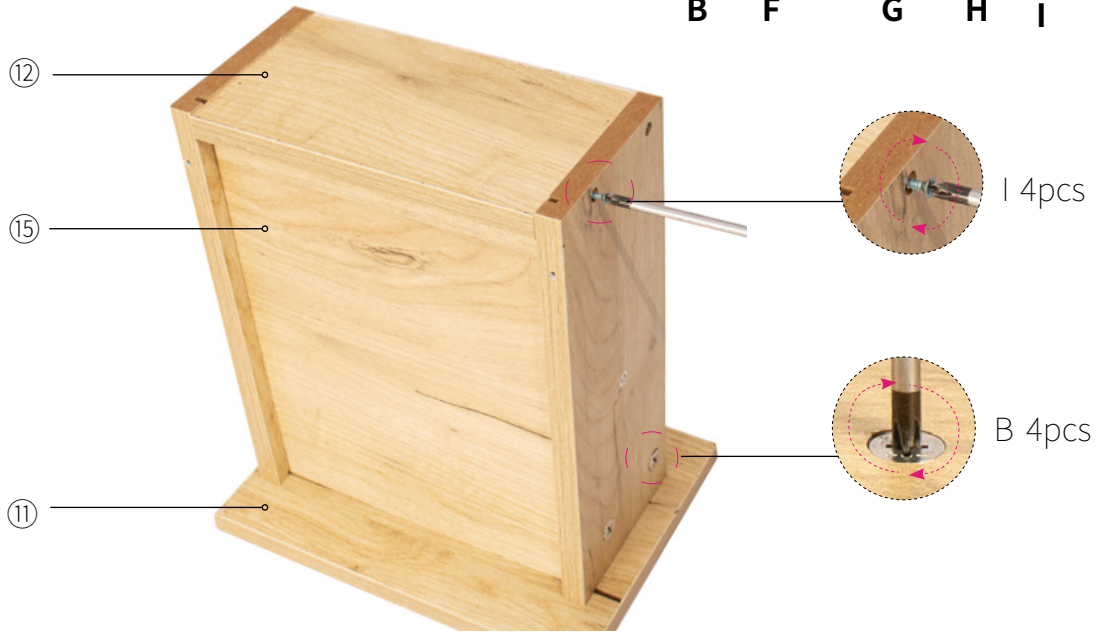
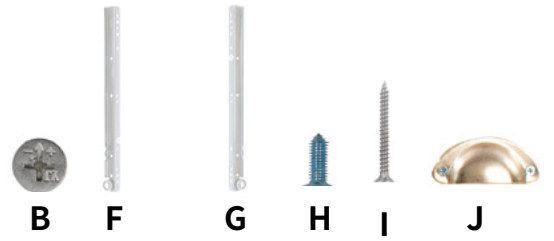


### step20

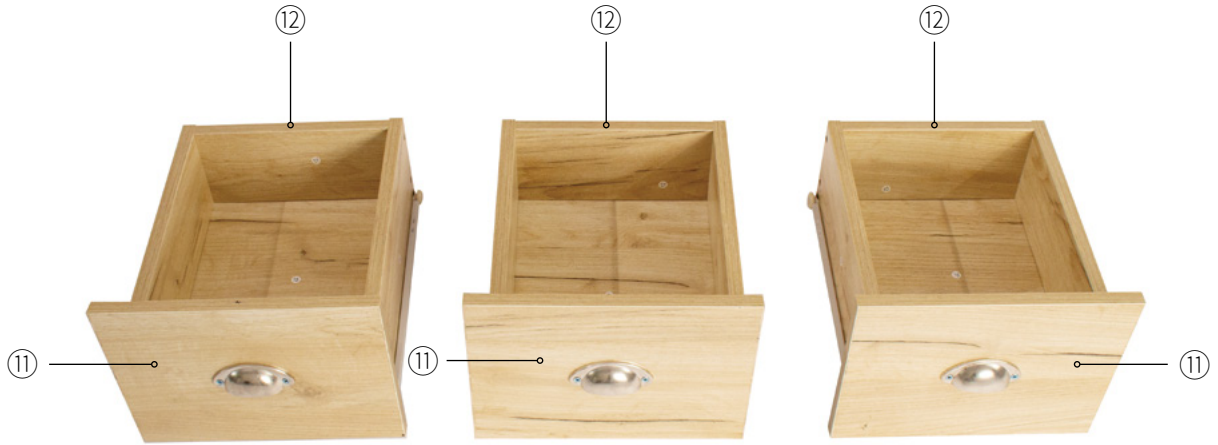


# Assemble steps

## step21



## Assemble steps

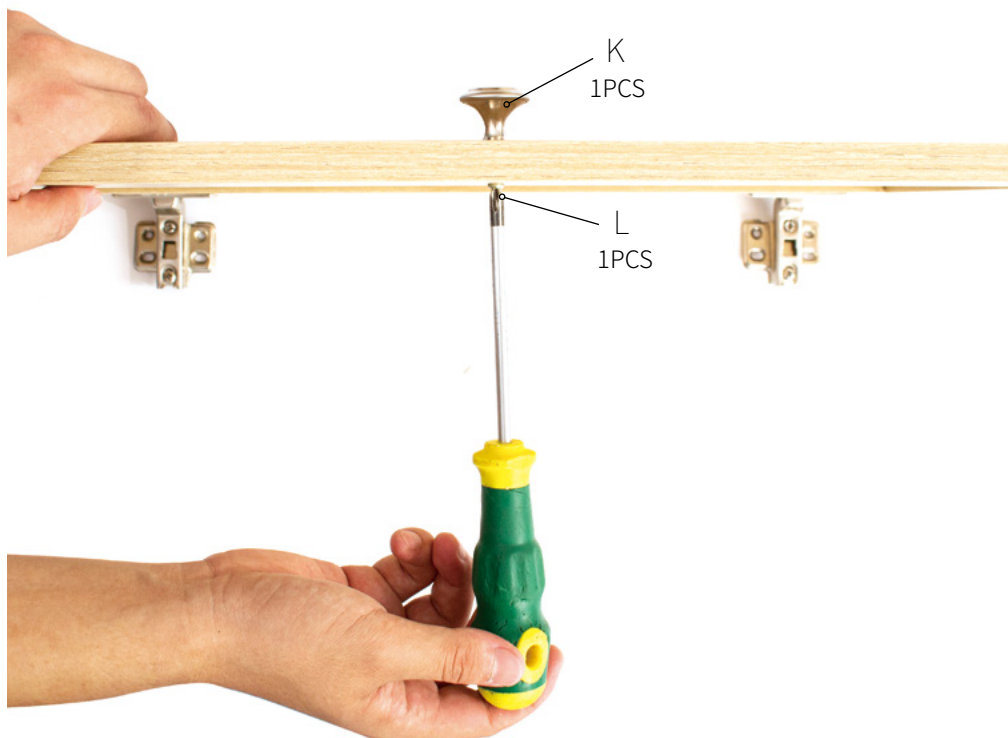
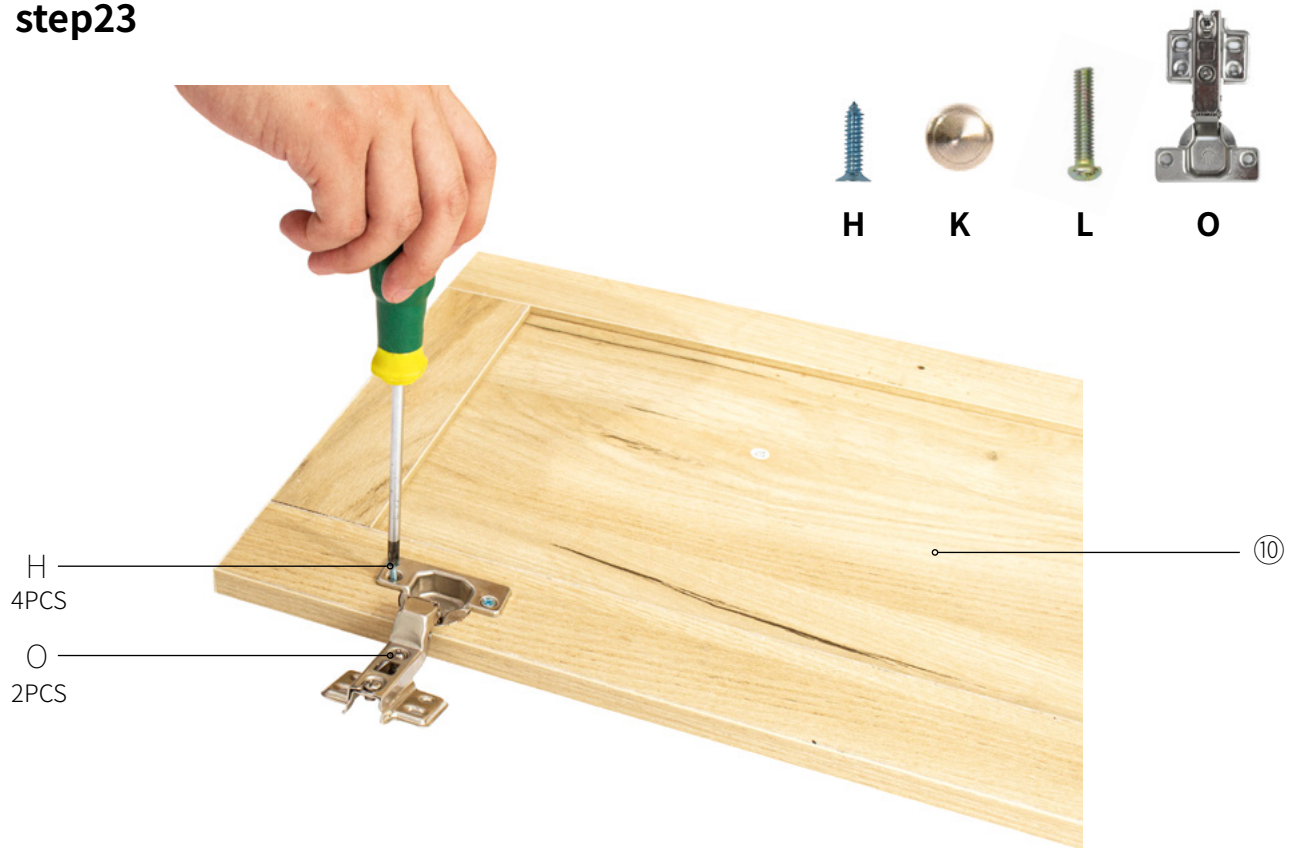


### step22



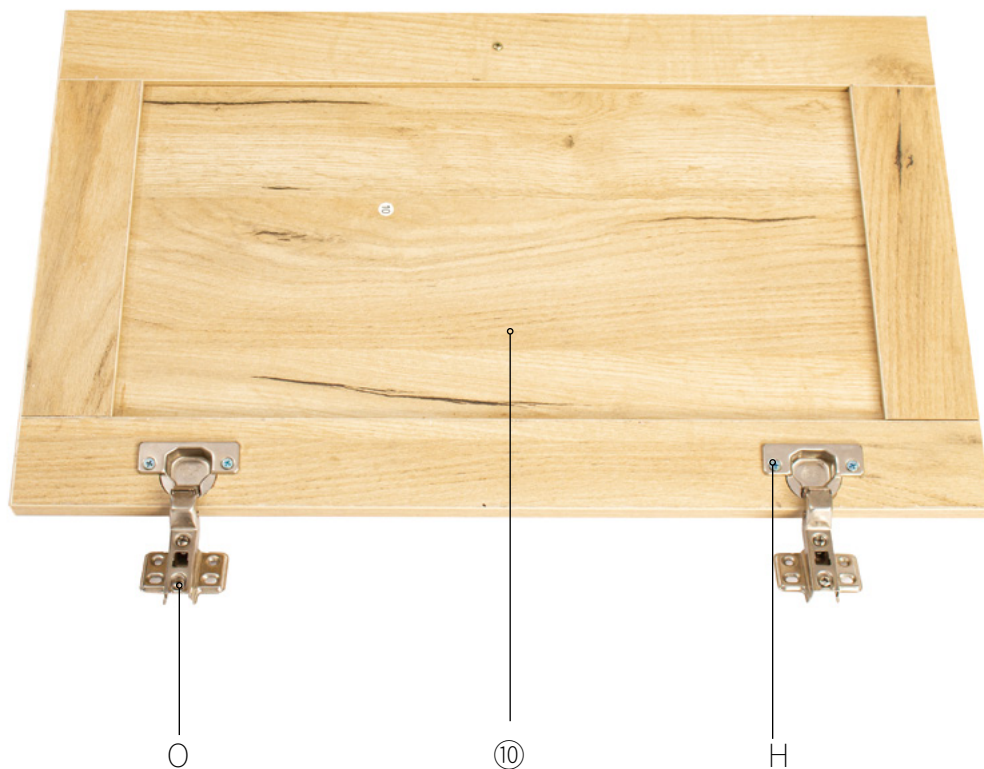
## Assemble steps

### step23



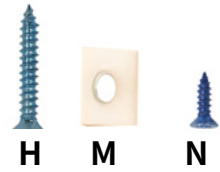
# Assemble steps

## step24

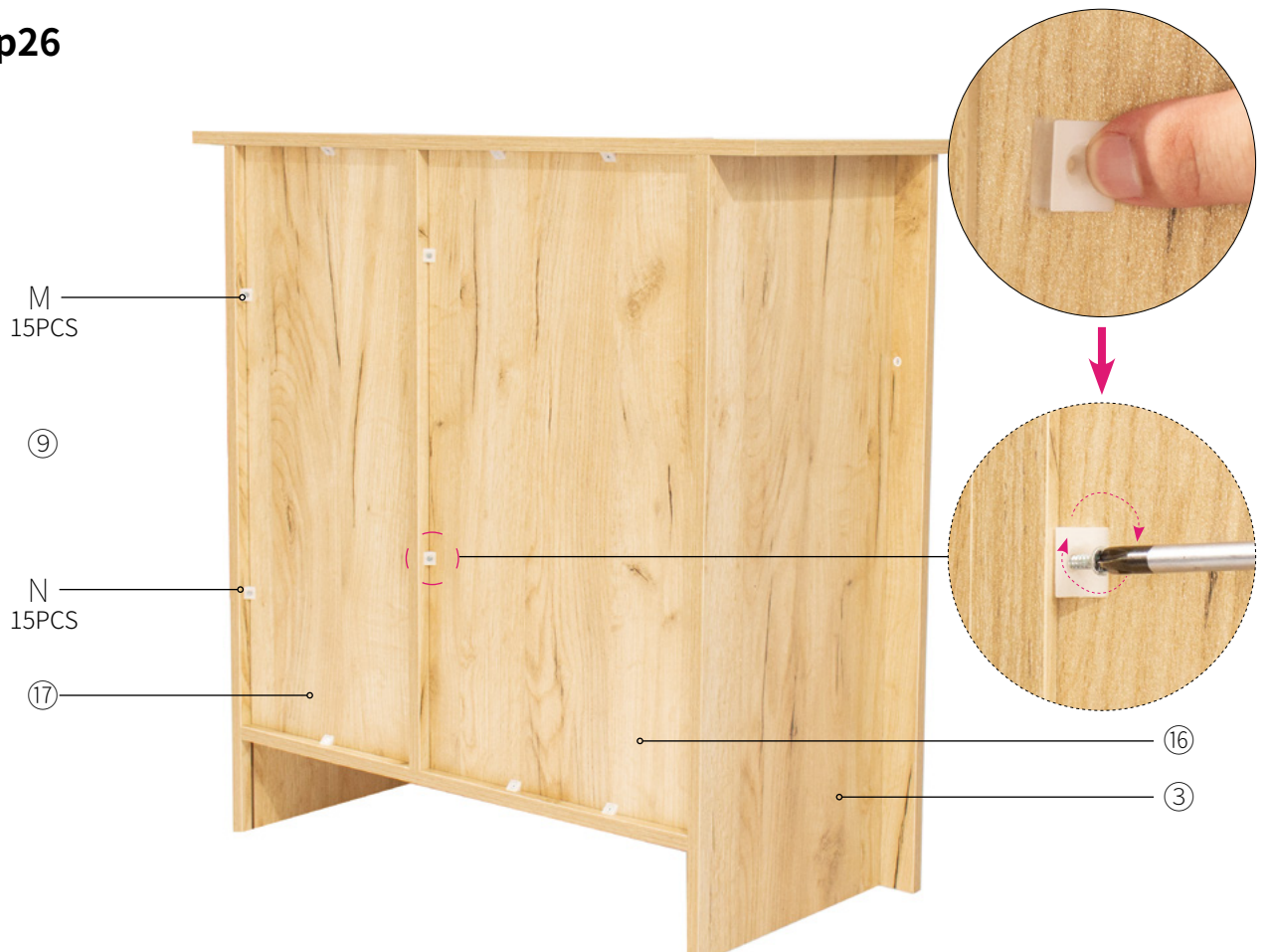


# Assemble steps

## step25



## step26





**-END-**