

ASSEMBLY AND CARE INSTRUCTION

Floor Lamp

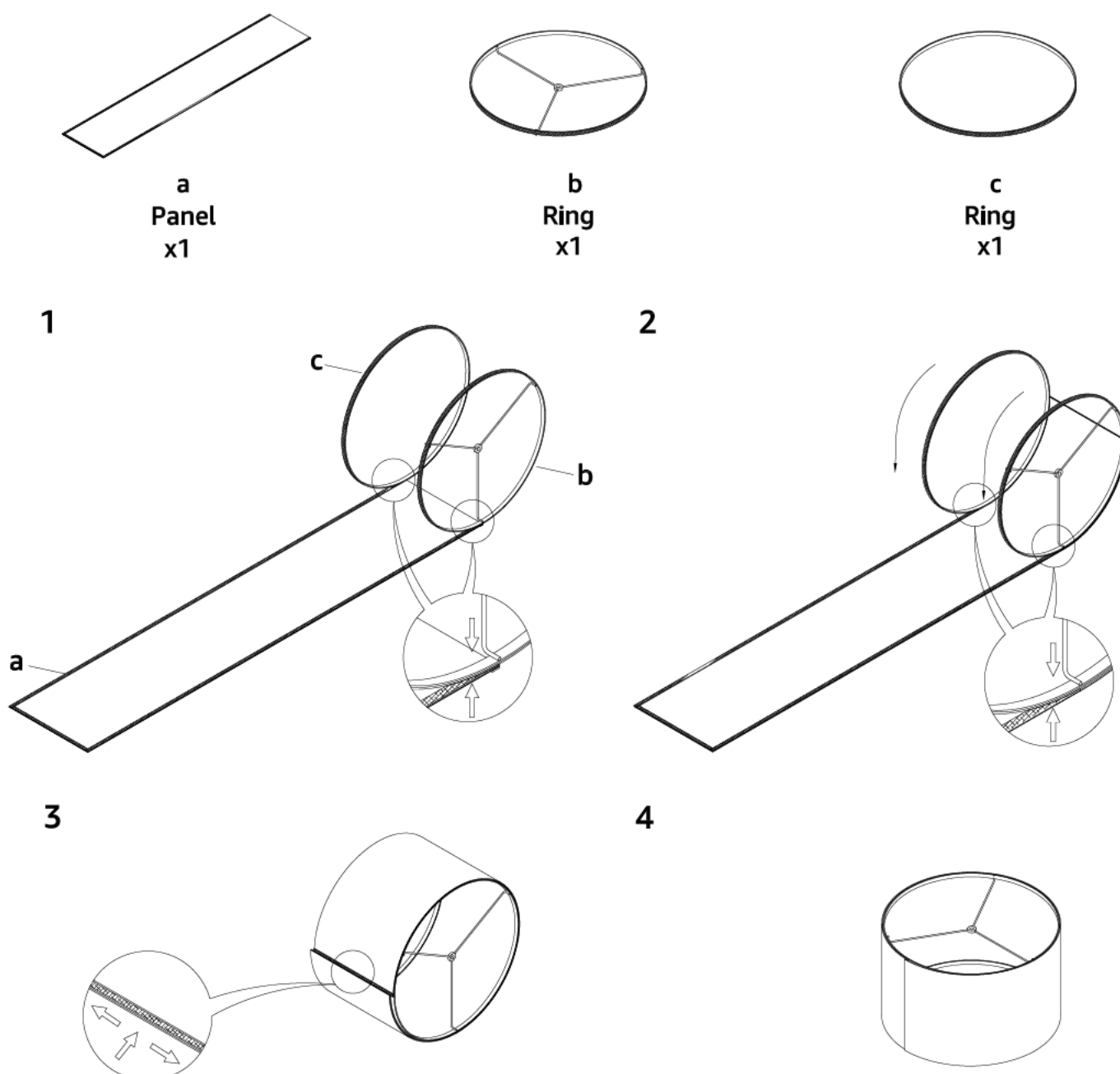
CARE AND MAINTENANCE

Unplug lamps before using any cleaning solutions. Dust shades with a feather duster or with an appropriate vacuum-brush attachment. Wipe with a soft, dry cloth and clean lamp bases with the methods appropriate to the material. Avoid the use of chemicals and household cleaners as they may damage the finish.

NOTICE & IMPORTANT SAFETY INSTRUCTIONS

- * Please make sure that you have all parts indicated before you begin assembly of this item.
- * This item should be assembled on a soft surface to prevent scratching the finish during assembly.
- * To reduce the risk of fire, electrical shock or injury to persons or property, please follow the guideline below for safe use and installation.
- * The external flexible cable or cord of this luminaire cannot be replaced.
If the cord is damaged, the luminaire shall be destroyed.
- ** This portable lamp has a polarized plug (one blade is wider than the other) as a safety feature to reduce the risk of electric shock, this plug will fit in a polarized outlet only one way, if the plug does not fit fully in the outlet, reverse the plug, if it still does not fit, contact a qualified electrician, never use with an extension cord unless the plug can be fully inserted, do not attempt to defeat this safety feature.

Shade Assembly Instructions



PARTS



A
Tube
x3



B1
Tube
x3



B2
Tube
x6



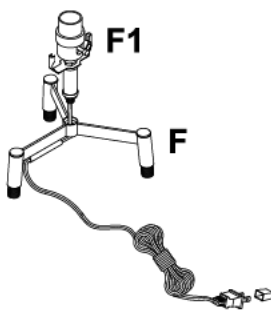
C
Bottom Shelf
x1



D
Middle Shelf
x1



E
Top Shelf
x1



F
Fork frame
x1



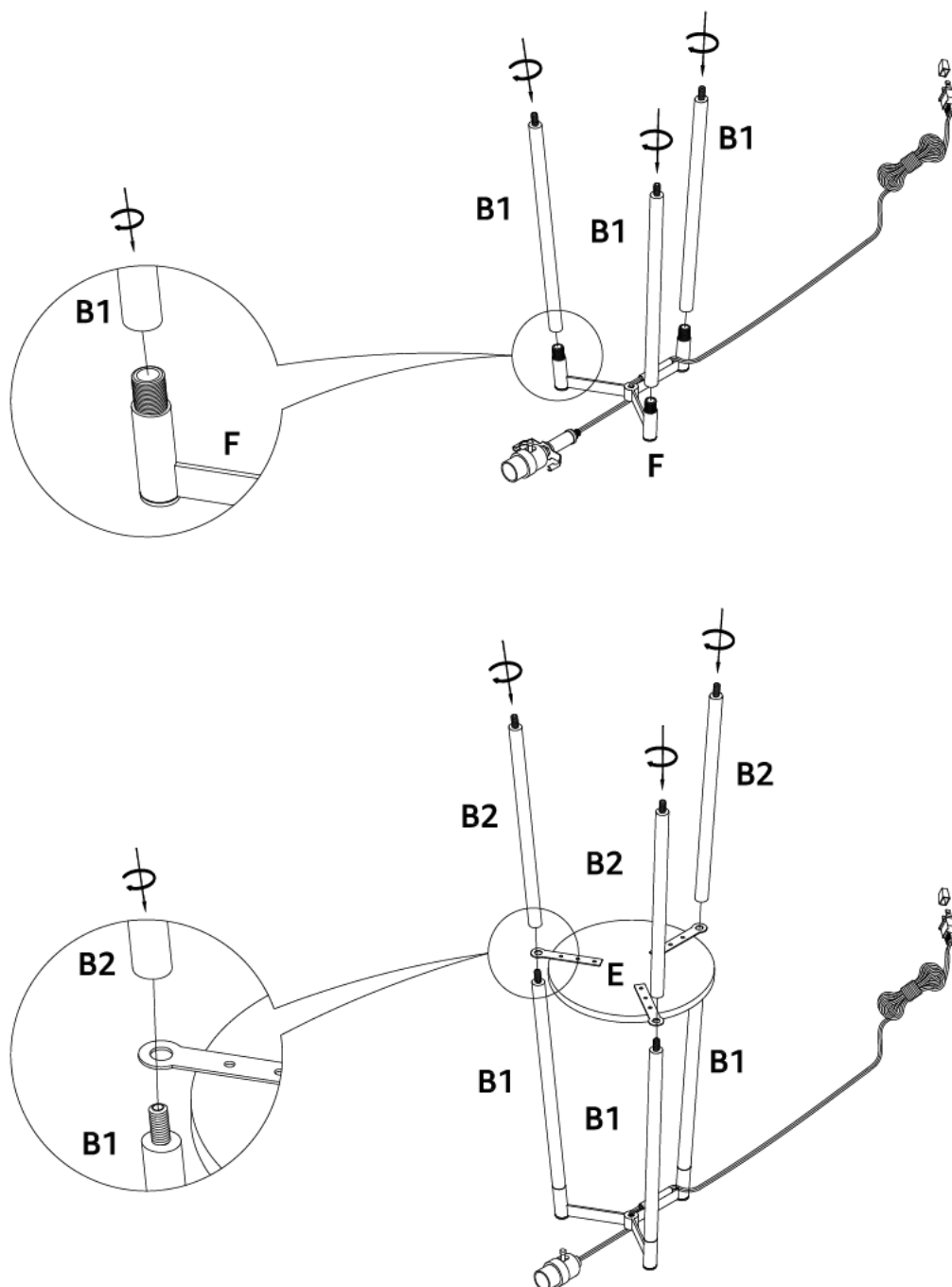
G
Harp
x1



H
Finial
x1

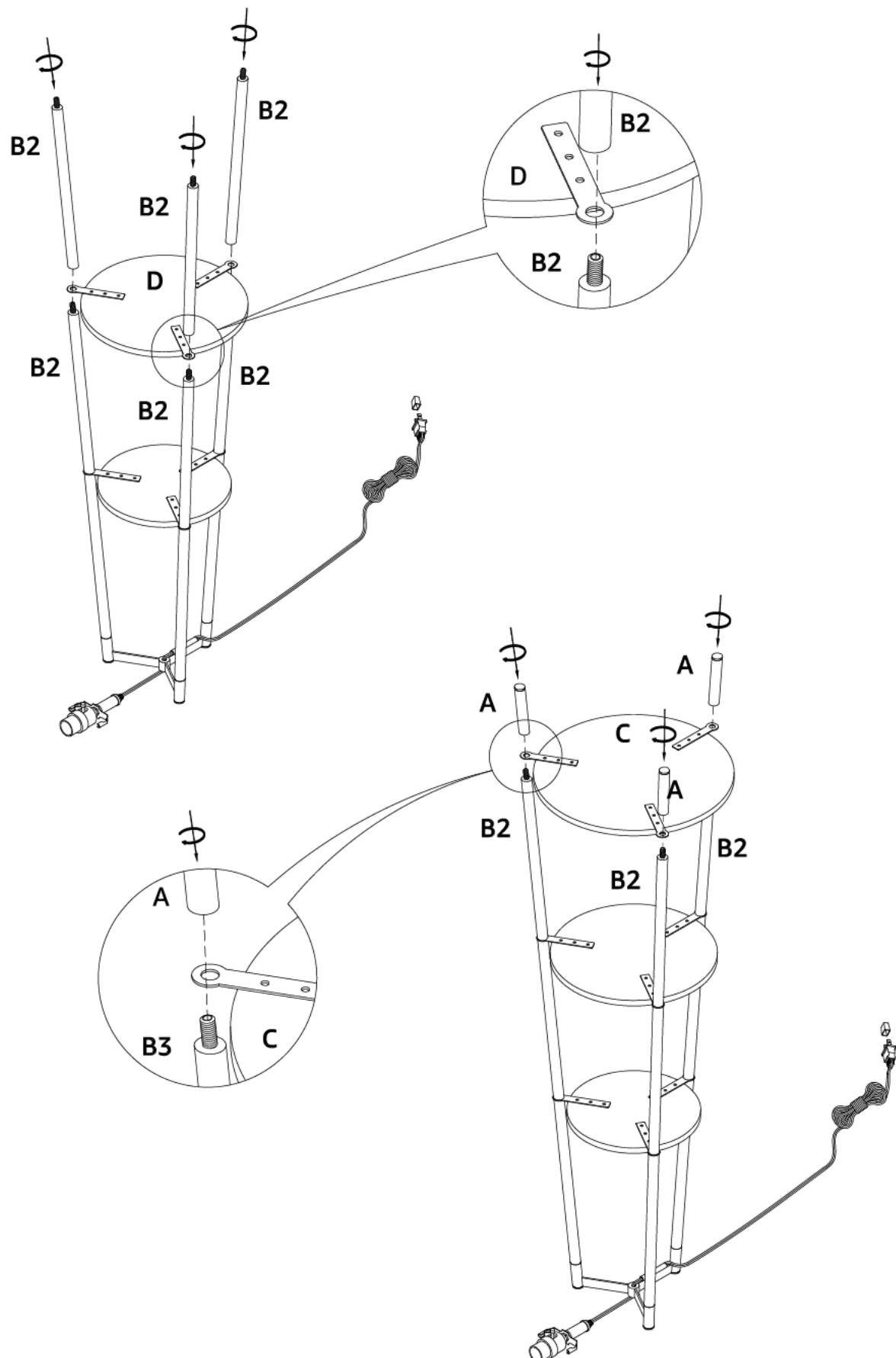
ASSEMBLY INSTRUCTIONS

- 1 Screw the tube B1 onto the fork frame F.
Put the top shelf E to the tube B1, then screw the tube B2 to the tube B1 through the top shelf E.



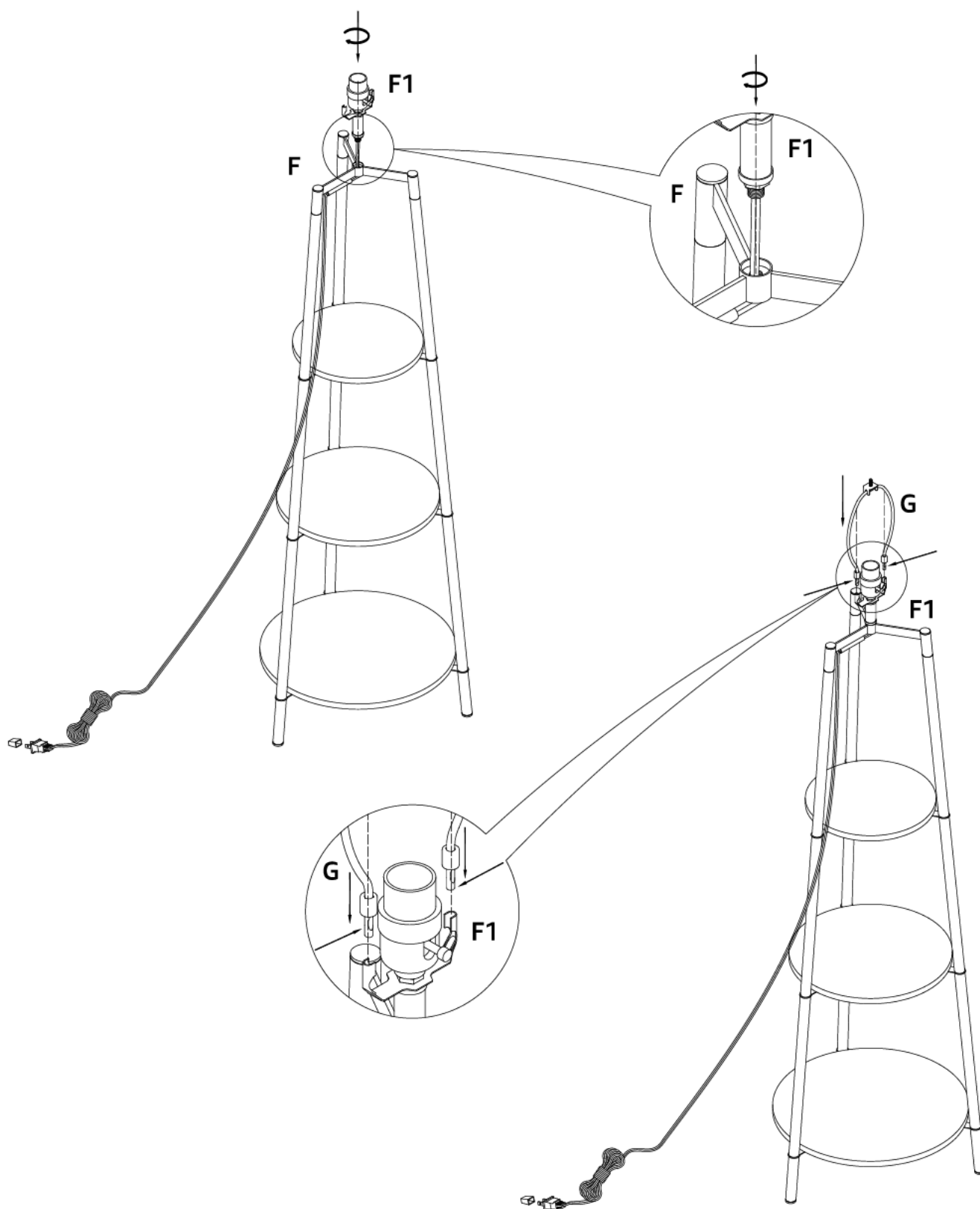
2

Put the middle shelf D to the tube B2, then screw the tube B2 to the tube B2 through the middle shelf D.
Put the bottom shelf C to the tube B2, then screw the tube A to the tube B2 through the bottom shelf C.



3

Screw the saddle of socket assembly F1 to fork frame F.
Screw off the harp G and the finial H at first.
Insert the harp G into the saddle of socket assembly F1.



4

Put the shade on the Harp G, then tighten the finial H into the harp G. Put the light on the level surface to check if everything is stable.

