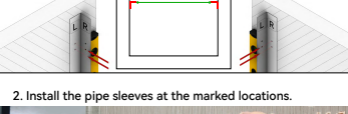


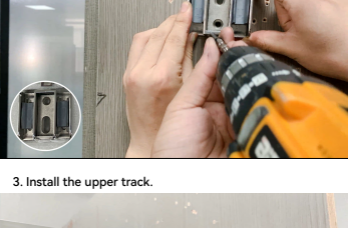
Instruction Manual

GD09

1. Use the hole locator to set the screw holes for the pipe sleeves. Ensure the hole locator stays level.



2. Install the pipe sleeves at the marked locations.



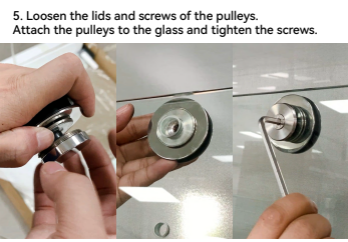
3. Install the upper track.



4. Put the lid back and tighten the screws.



5. Loosen the lids and screws of the pulleys. Attach the pulleys to the glass and tighten the screws.

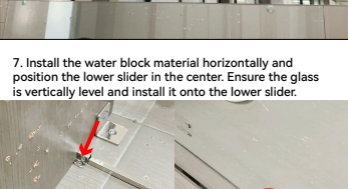


Notice:
Make sure the plastic protector between the glass hole and metal is correctly installed. Glass shouldn't touch the metal parts at any time.

6. Hang the pulleys on the inner side of the track.



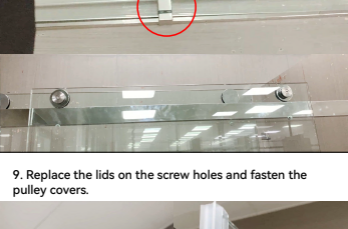
7. Install the water block material horizontally and position the lower slider in the center. Ensure the glass is vertically level and install it onto the lower slider.



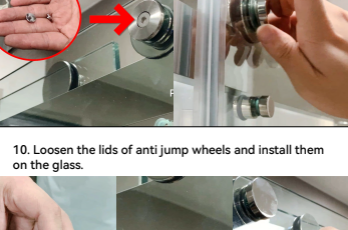
8. Place the outer glass on the lower slider and hang the pulleys on the outer side of the track.



9. Replace the lids on the screw holes and fasten the pulley covers.



10. Loosen the lids of anti jump wheels and install them on the glass.

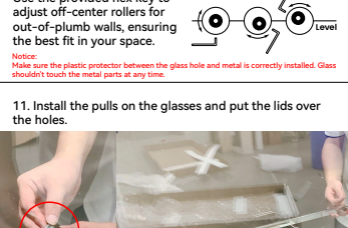


Use the provided hex key to adjust off-center rollers for out-of-plumb walls, ensuring the best fit in your space.



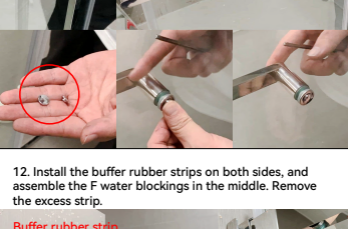
Notice:
Make sure the plastic protector between the glass hole and metal is correctly installed. Glass shouldn't touch the metal parts at any time.

11. Install the pulls on the glasses and put the lids over the holes.



12. Install the buffer rubber strips on both sides, and assemble the F water blockings in the middle. Remove the excess strip.

Buffer rubber strip



F water blocking

Remove the excess strip

FINISH