

EVOLUTION® 5' x 32" IA-LHO / RHO

Comfortable bathing design with form-fitted backrest and molded-in armrests

- ☐ **2425VC-LHO Built-In Integral Apron Left Hand Drain Outlet (specify color)**
- ☐ **2425VC-RHO Built-In Integral Apron Right Hand Drain Outlet (specify color)**
 - EverClean® System
 - Acrylic with fiberglass reinforcement
 - Integral apron with removable access panel
 - Integral three-sided, tiling/water retention flange
 - 1.25 HP self-draining pump/motor
 - Eight flow adjustable jets including:
 - Two adjustable Comfort Jets™ Hi Flo
 - Six adjustable Comfort Jets™
 - Two silent air volume controls
 - Side-mounted On/Off control
 - Deep Soak Overflow Drain for maximum water depth
 - Complete factory installed and tested whirlpool system
- ☐ **2425V-LHO Built-In Integral Apron Left Hand Drain Outlet (specify color)**
- ☐ **2425V-RHO Built-In Integral Apron Right Hand Drain Outlet (specify color)**
 - Same as above without the EverClean® System
- ☐ **2425V-LHO.002 Bathing Pool**
- ☐ **2425V-RHO.002 Bathing Pool**

Nominal Dimensions:

60" x 32" x 21-1/2"
(1524 x 813 x 546mm)

Compliance Certifications -

Meets or Exceeds the Following Specifications:

- Underwriters Laboratories - Hydromassage Bathtubs UL 1795
- ASME A112.19.7M for Whirlpool Appliances
- ANSI Z124.1 for Plastic Bathtubs
- ASTM E162 for Flammability
- NFPA 258 for Smoke Density

American Standard whirlpools and air baths with EverClean® incorporate a safe and effective silver-ion antimicrobial additive right into the circulation piping to protect the pipes from mold, mildew, algae and fungus that could cause deterioration or staining of the pipes.



Components Required:

- ☐ Bath Filler*: (specify finish)
- ☐ Bath Drain: 1599.205.XXX (specify color)

Custom Accessories Available:

- ☐ Safe-T-Heater: 9075.120

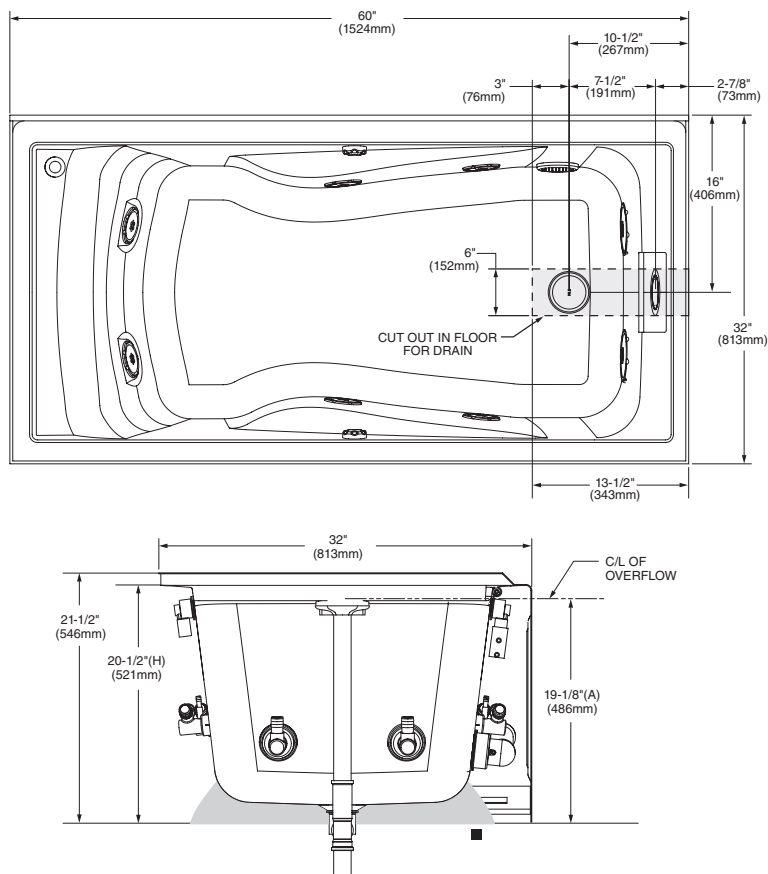
* See American Standard Faucet Selector

For color/finish availability and other faucet choices, please see the Product Selector and Pricing Guide.

NOTE: Whirlpool Heater is designed to maintain water temperature during operation. It will not heat cold water to desired bathing temperature.

**SEE REVERSE FOR ROUGHING-IN DIMENSIONS
AND PRODUCT SPECIFICATIONS**

Model **2425V-LHO**
shown



GENERAL SPECIFICATIONS FOR 2425V WHIRLPOOL

INSTALLED SIZE _____ 60 x 32 x 20-1/2 (1524 x 813 x 521mm)
WEIGHT _____ 92 Lbs. (42 Kg.)
WEIGHT w/WATER _____ 675 Lbs. (306 Kg.)
GAL. TO OVERFLOW _____ 70 Gal. (265 L.)
WHIRLPOOL MIN. OPERATING VOL. _____ 39 Gal. (148 L.)
BATHING WELL AT SUMP _____ 42 x 22 In. (1067 x 559mm)
BATHING WELL AT RIM _____ 53 x 25-1/2 In. (1346 x 648mm)
WATER DEPTH TO OVERFLOW _____ 17-1/2 (445mm)
FLOOR LOADING _____ 51 Lbs./Sq.Ft. (247 Kgs./Sq.m)
(PROJECTED AREA)

WHIRLPOOL ELECTRICAL SPECIFICATIONS

PUMP _____ 1.25 HP, 9.7 AMPS, 120V.

GENERAL SPECIFICATIONS FOR 2425V BATHING POOL

INSTALLED SIZE _____ 60 x 32 x 20-1/2 (1524 x 813 x 521mm)
WEIGHT _____ 77 Lbs. (35 Kg.)
WEIGHT w/WATER _____ 661 Lbs. (299 Kg.)
GAL. TO OVERFLOW _____ 70 Gal. (265 L.)
BATHING WELL AT SUMP _____ 42 x 22 In. (1067 x 559mm)
BATHING WELL AT RIM _____ 53 x 25-1/2 In. (1346 x 648mm)
WATER DEPTH TO OVERFLOW _____ 17-1/2 (445mm)
FLOOR LOADING _____ 50 Lbs./Sq.Ft. (242 Kgs./Sq.m)
(PROJECTED AREA)

NOTES:

BATH CAN BE INSTALLED EITHER ABOVE OR BELOW FLOOR LINE AS PIER, ISLAND, OR PENINSULA TYPE INSTALLATION. SUPPORT OF BATH BY SUMP BEDDING. SUPPORT AND ENCLOSING MATERIAL BY OTHERS.

■ REFER TO INSTALLATION INSTRUCTIONS SUPPLIED WITH WHIRLPOOL FOR ADDITIONAL INFORMATION.

FITTINGS NOT INCLUDED AND MUST BE ORDERED SEPARATELY.

PROVIDE SUITABLE REINFORCEMENT FOR ALL SUPPORTS.

IMPORTANT: Dimensions of fixtures are nominal and may vary within the range of tolerances established by ANSI Standard Z124.1 and A112.19.7. These measurements are subject to change or cancellation. No responsibility is assumed for use of superseded or voided leaflet.