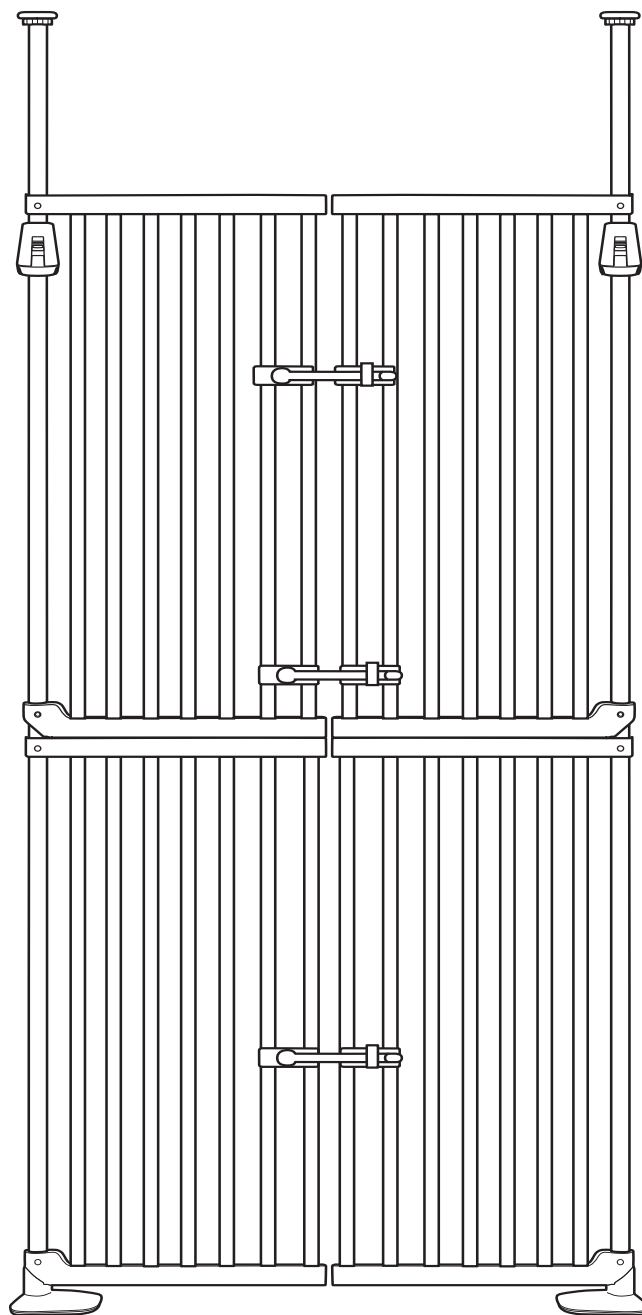


**Fit Opening:**  
**About 33.5-36.42Inch**

**Fit Height:**  
**About 74.8-98.43Inch**



- Thank you for your purchase. Before using, please read the instruction manual carefully to avoid any accidents.
- Please install the gate on the floor, otherwise, it will get fingers stuck or cause any other accidents.

## Parts

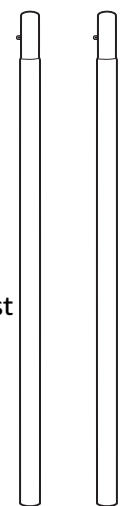
Please confirm all parts are ready for assembly.

⑧ Circle Screw X 2pcs



③

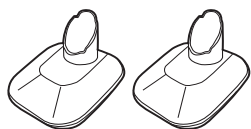
Adjustable Post  
X 2pcs



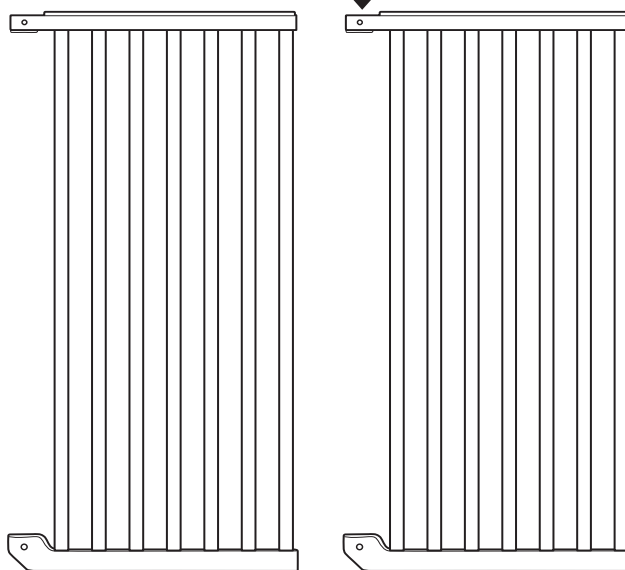
④

Connecting Post  
X 2pcs

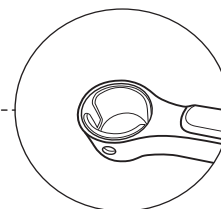
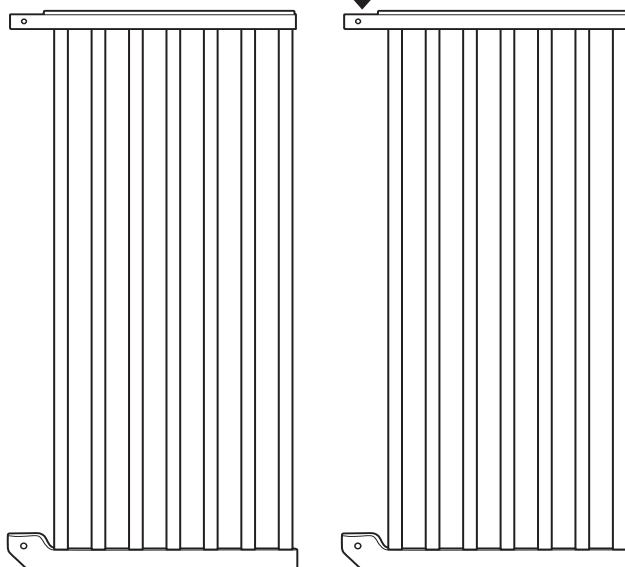
⑤ Non-Slip Base X 2pcs



① Top Frame X 2pcs

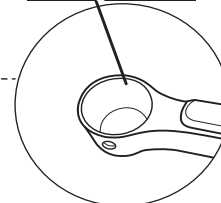


② Bottom Frame X 2pcs

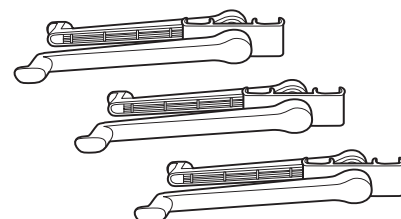


※ Rings inside

No rings inside



⑥ Latch X 3pcs

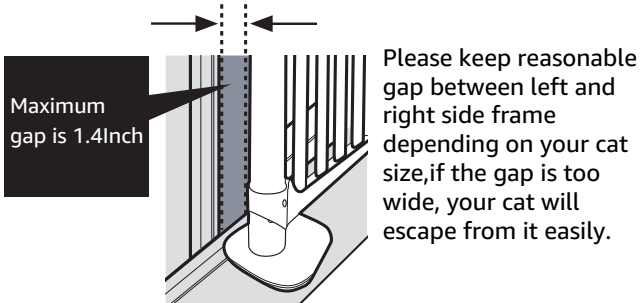
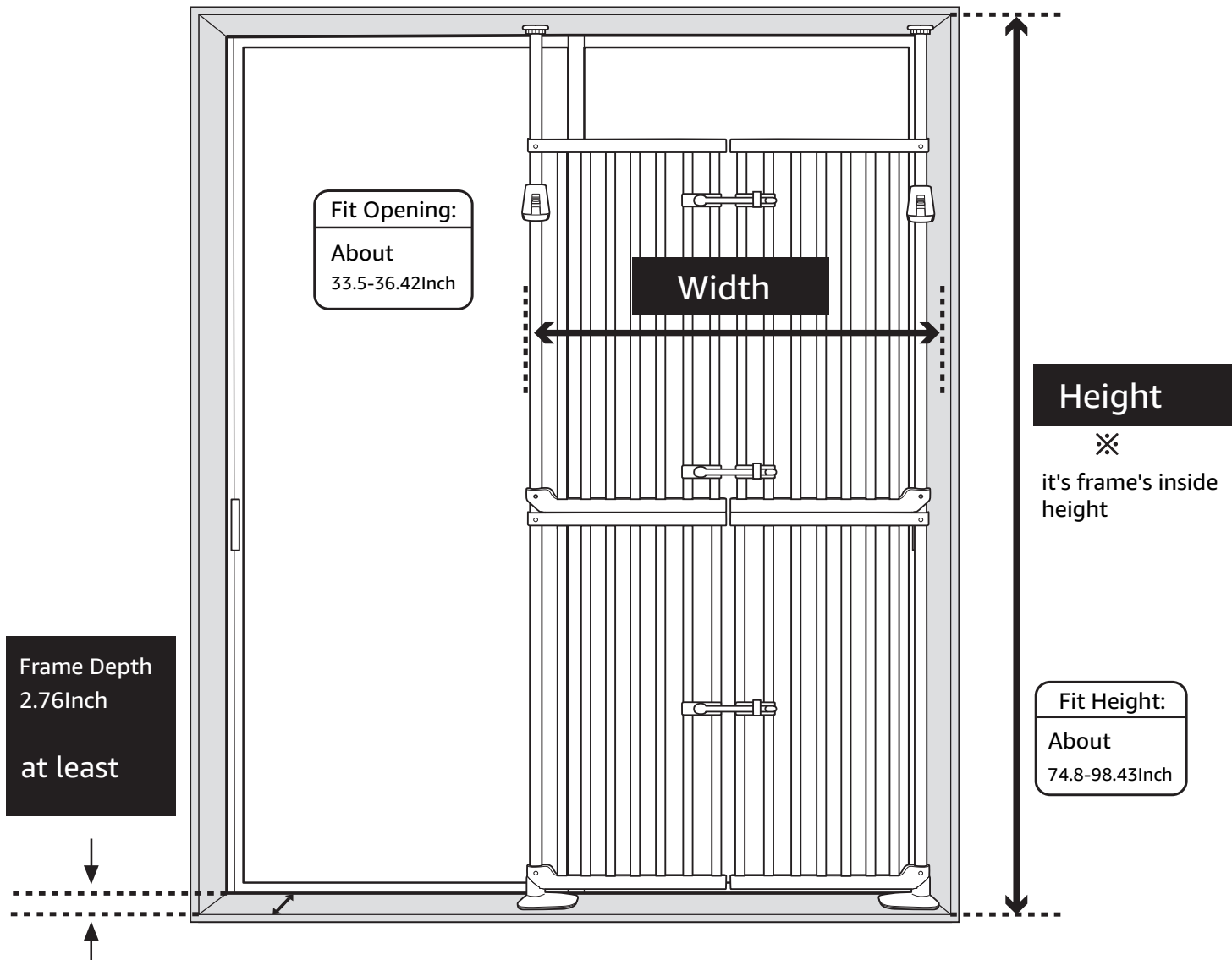


⑦ Fixing Pin X 3pcs

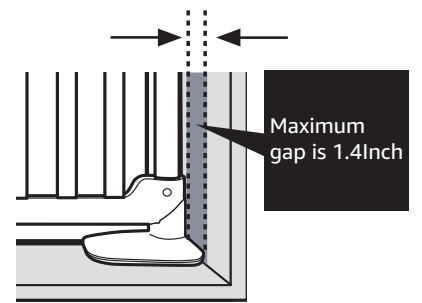


## About the place for installation

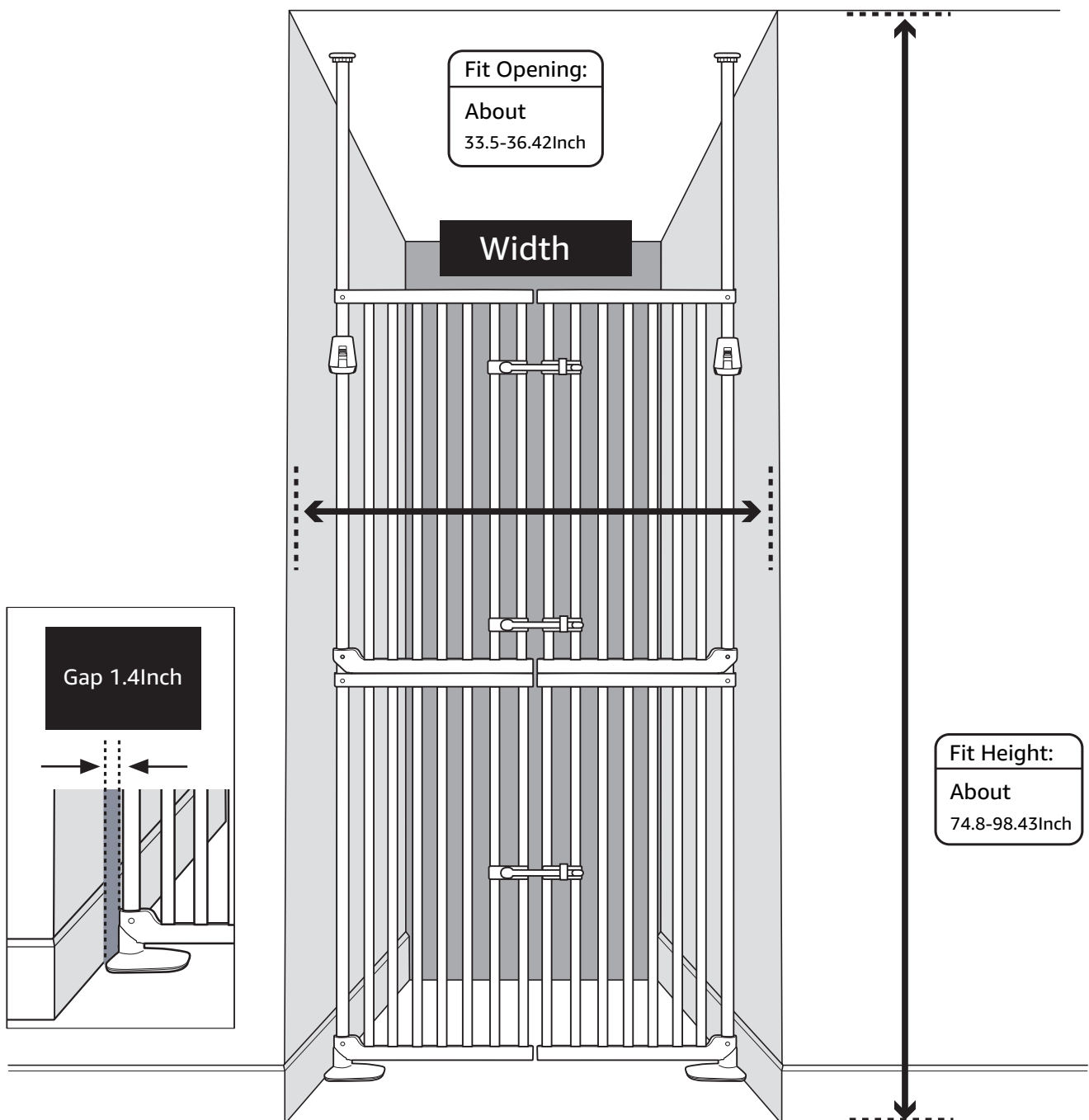
### When set at door frame



Please keep reasonable gap between connecting post and frame depending on your cat size, if the gap is too wide, your cat will escape from it easily.

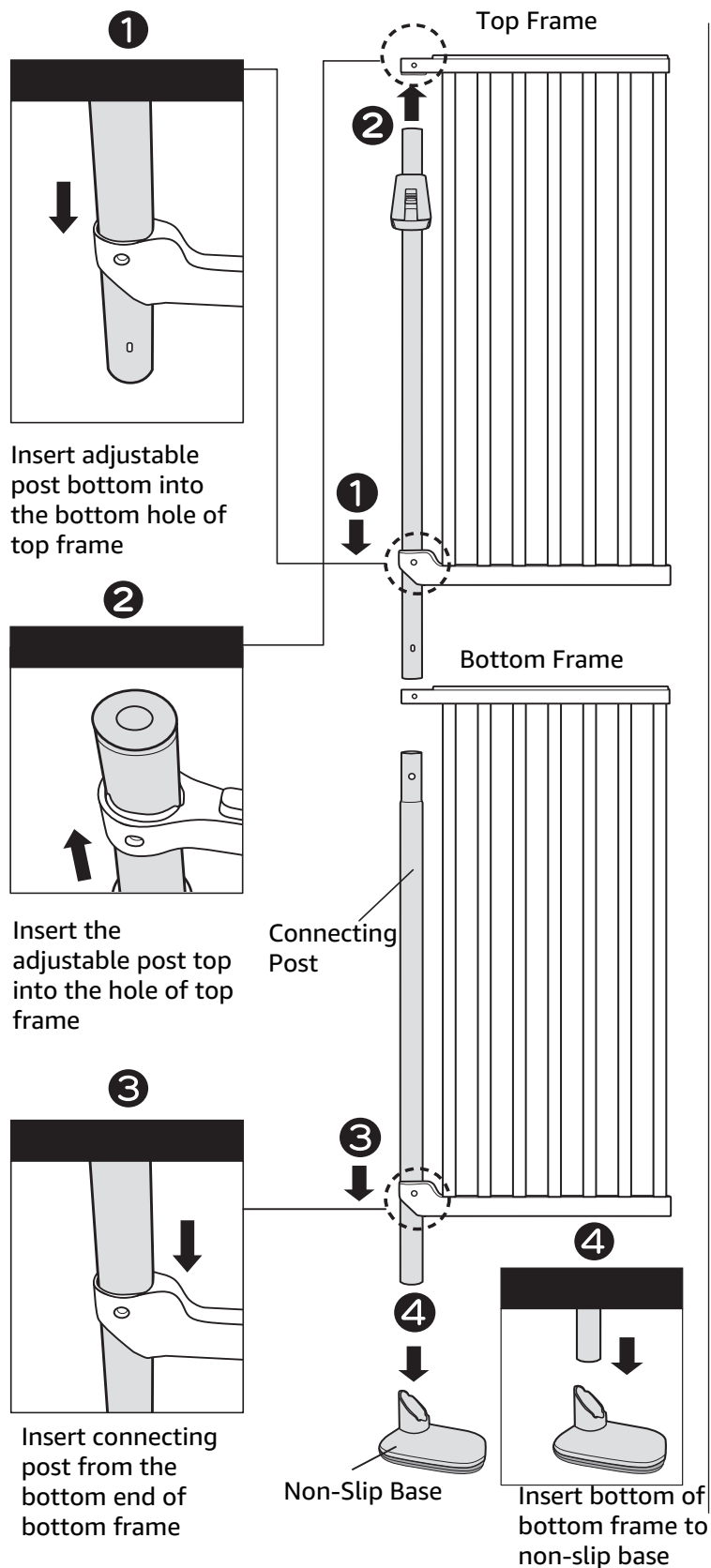


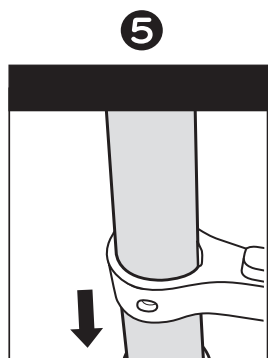
### When set at entryway & passage



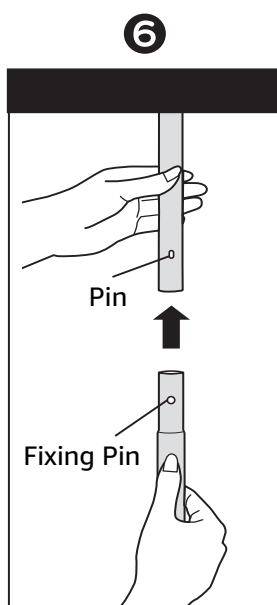
# Assembly Instruction (For post and frame)

## 1 Connect post and frame( please follow below steps 1 to 8)

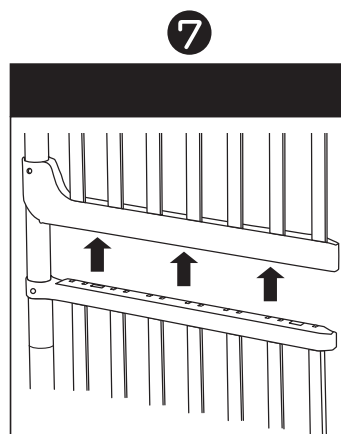
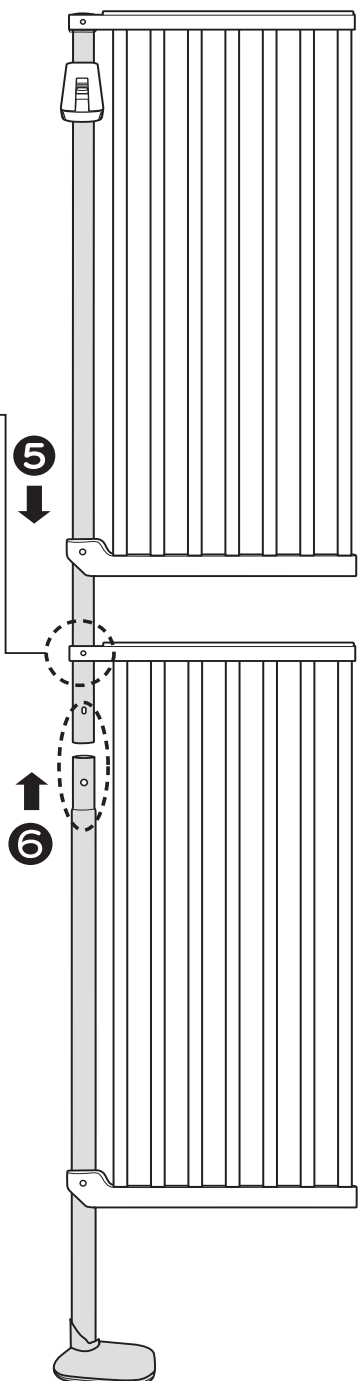




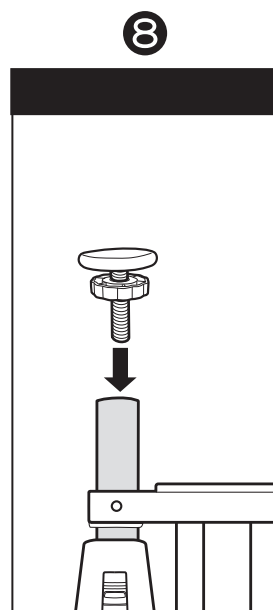
Insert adjustable post into the top of connecting post



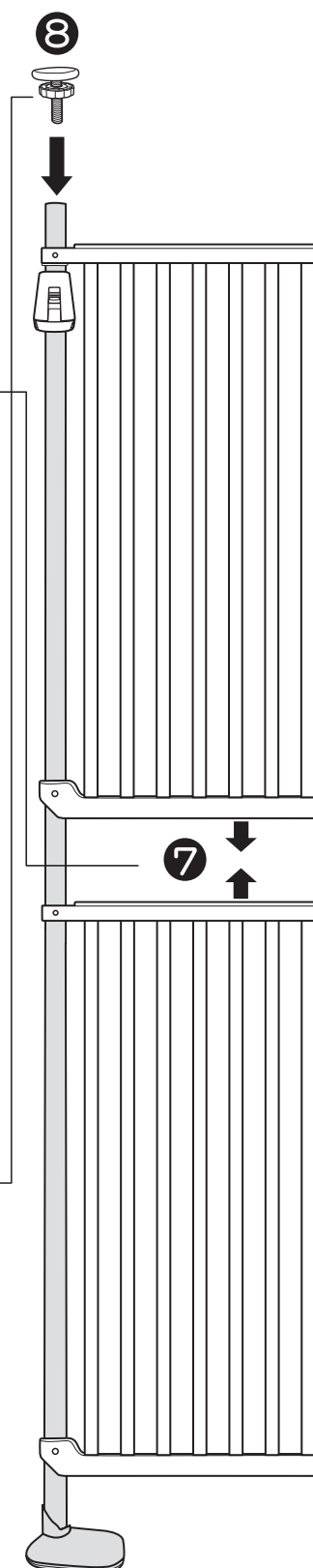
Fix top and bottom post through pin



Connect top and bottom frame (press top frame for fixing)

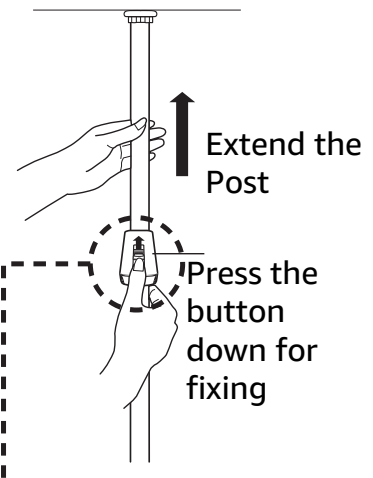
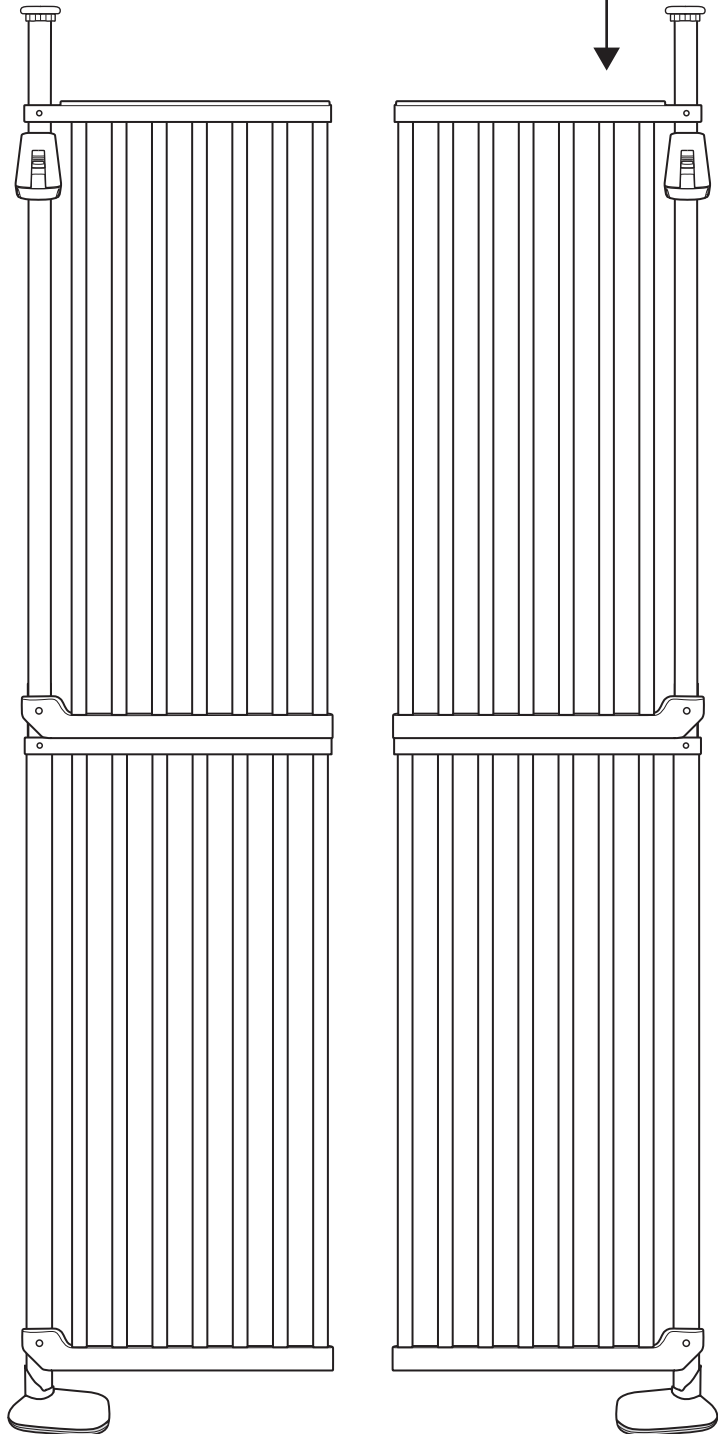


Insert circle screw into the top hole of adjustable post

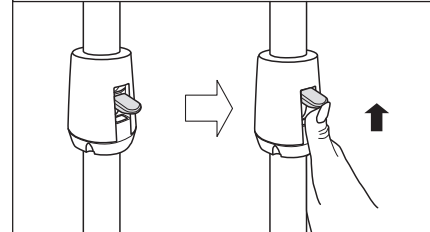


## Assembly Instruction (For post and frame)

※ Please install right side frames like left side



How to adjust the height

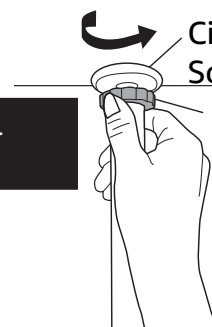


Pull the button up

Circle Screw

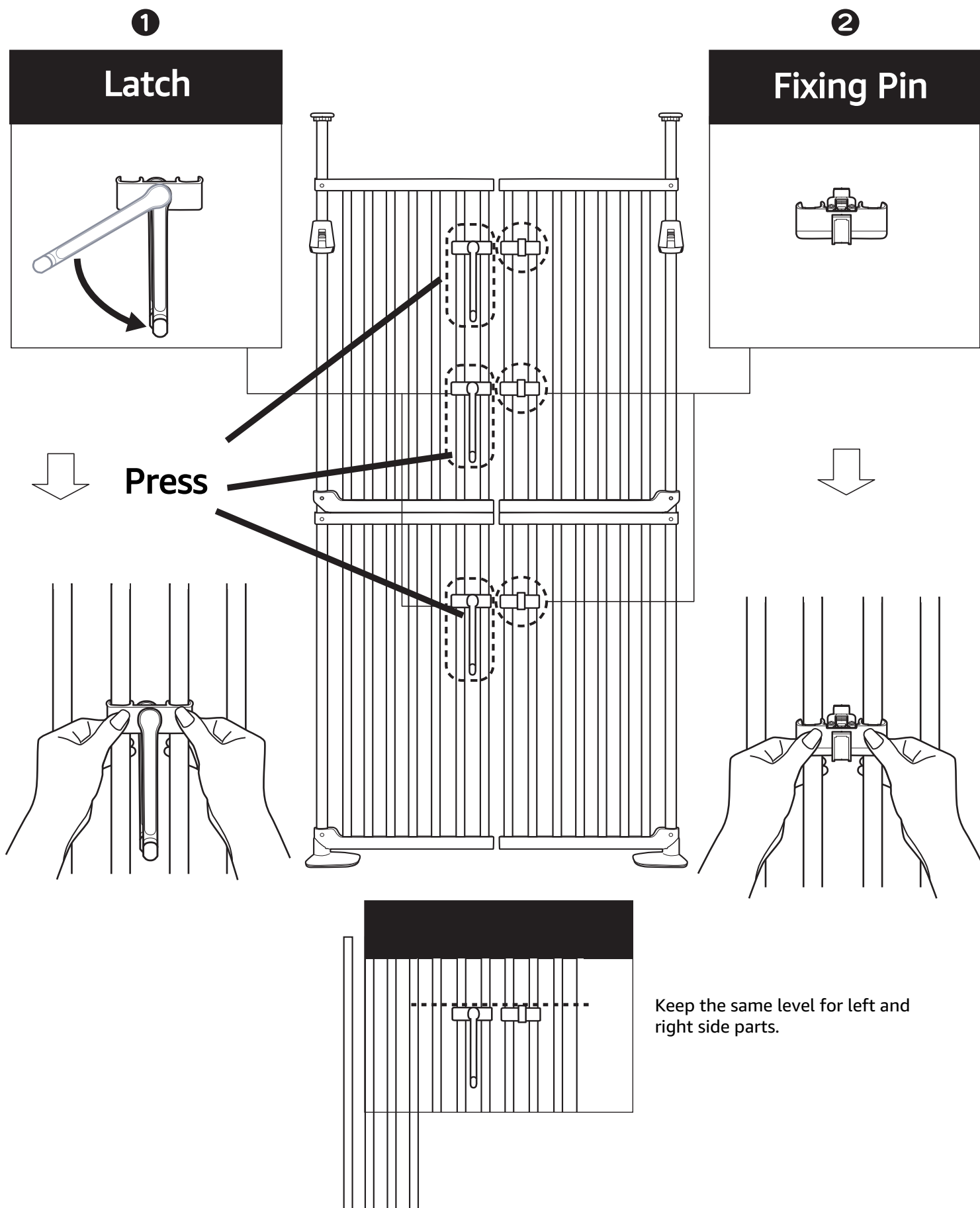
Vertical Setting

Twist the circle screw counterclockwise for fixing



## Assembly Instruction (Door and latch)

**2** Install latch and fixing pin to gate as below diagram shown.



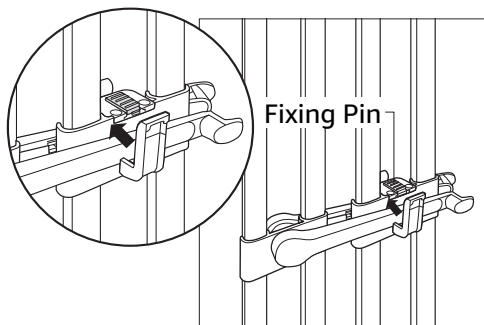


# How to open and close the gate door

## How to open the door

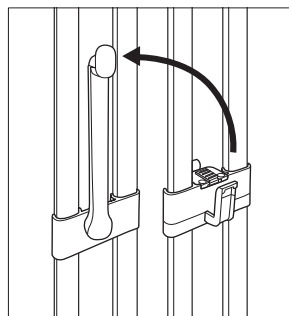
### ① Unlock

- Slide the fixing pin



### ② Lift the latch

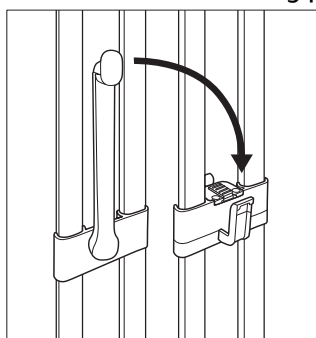
- Open the door with lifted latch



## How to close the door

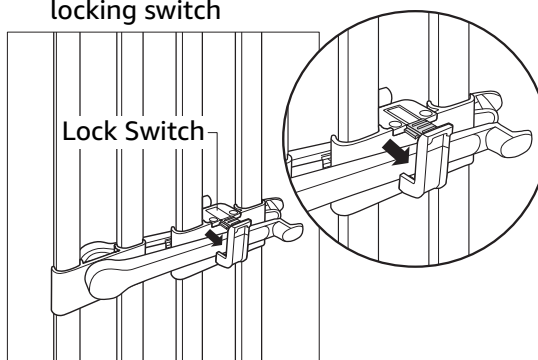
### ① Put the latch down

- Keep the latch on the same level with fixing pin

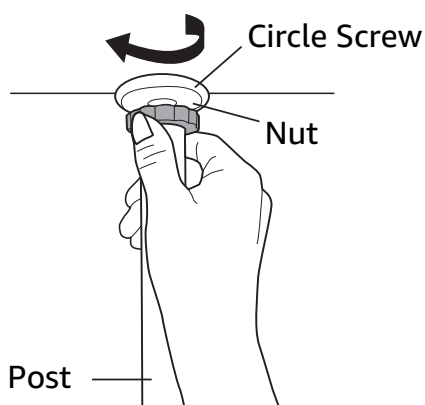


### ② Locking

- Slide the fixing pin for locking switch



## How to disassemble the gate



1

Twist the nut on clockwise, then take off the adjustable post from inserted location.

2

Please disassemble the frame and post in reverse order of how to assemble it. (Please refer to page 7 & 8)

### ⚠ Warning

Please must disassemble the frame and post in orders, otherwise, wall and ceiling will be damaged.