

# The Southshore Difference

## ✓ Southshore Typical Quilts ✗



### Durable Stitched Quilting

Traditional stitching keeps fill secure and prevents shifting.



### Quilted Both Sides + Envelope Closure

Fully quilted front and back with a clean envelope finish.



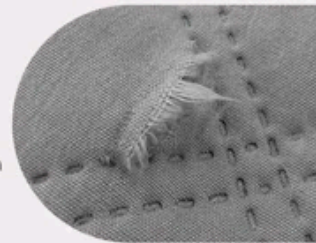
### Oversized for Better Coverage

Designed larger to provide fuller drape on your bed.

**Our Full/ Queen oversized quilt is 98 inches wide x 98 inches long**

### Embossed Pattern

Adhesion used to form the pattern may weaken over time.



### Front Quilted Only

Back side often left plain with no quilting.



### Standard Size Coverage

Smaller sizing may leave less coverage on the bed.



**Standard Queen Size is 86 inches wide x 86 inches long**