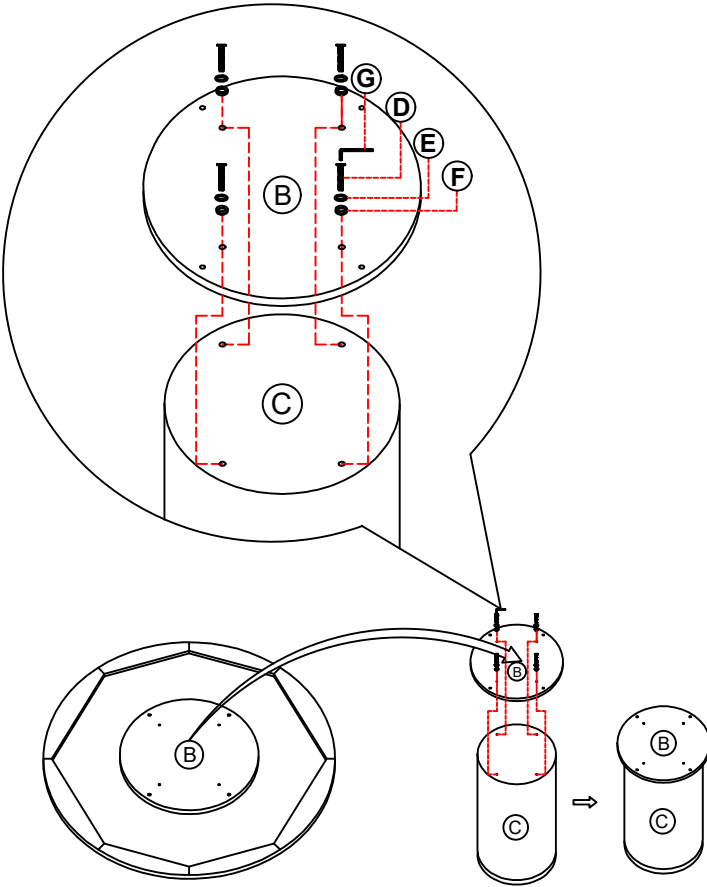


STEP 1

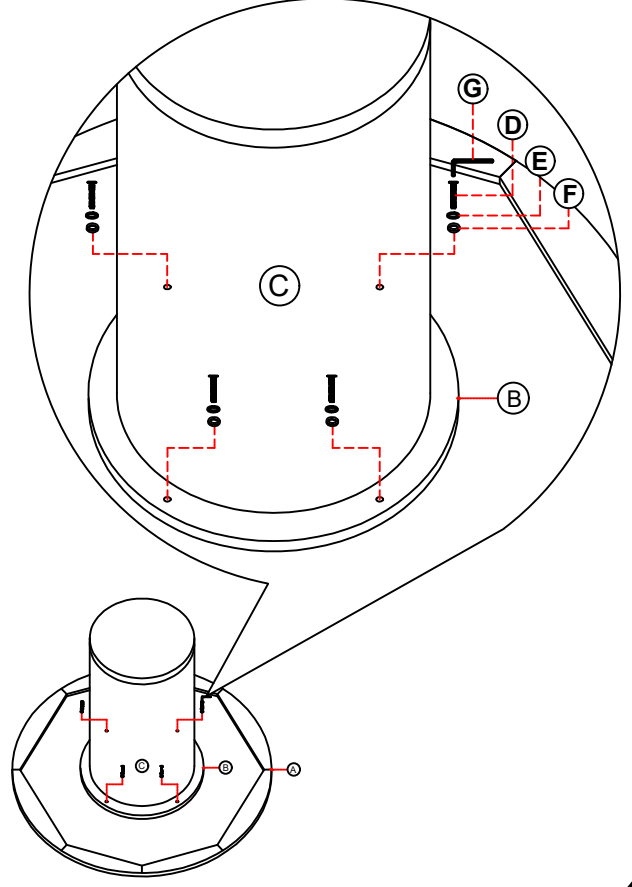
1. Attach Mounting Plate (B) to the Base (C) Using bolt M6 x 40mm (D) Lock washer M6 (E) flat washer 13 x 6 x 1 (F) Allen Key 4mm (G) Clockwise to tighten as shown below



Page 2 of 4

STEP 2

2. Attach Base (C) Mounting Plate (B) to the Top Table (A) Using bolt M6 x 40mm (D) Lock washer M6 (E) flat washer 13 x 6 x 1 (F) Allen Key 4mm (G) Clockwise to tighten as shown below



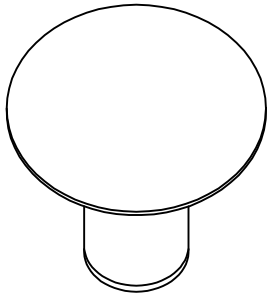
Page 3 of 4

**BUTLER**  
SPECIALTY COMPANY  
Est. 1980

Assembly Instruktion

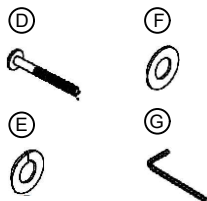
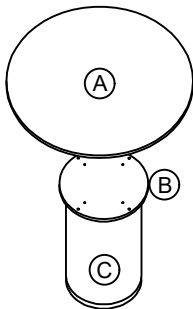
- 5988506T
- 5988506B
- 5988059T
- 5988059B
- 6252492T
- 6252492B
- 6252513T
- 6252513B

Round Dining Table

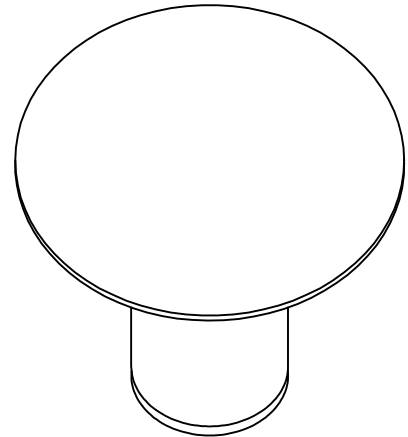


ITEM DESCRIPTION QUANTITY

- |   |                  |   |
|---|------------------|---|
| A | Top Table        | 1 |
| B | Mounting Plate   | 1 |
| C | Base             | 1 |
| D | Bolt M6 x 40mm   | 4 |
| E | Spring Washer M6 | 4 |
| F | Flat Washer M6   | 4 |
| G | Allen Key 4mm    | 1 |



Page 1 of 4



**Congratulations**

Assembly complete, Your Dining Table is ready to use.

(\*) Caution : DO NOT OVERTIGHTEN

In any correspondence regarding this product, please include the complete Butler identification number located on the underside of the product.

We hope this product will be a useful and decorative addition to your home for years to come.

Copyright © Butler Specialty Company, 07 / 25

Page 4 of 4