



**VESTIL MANUFACTURING CO.**

2999 North Wayne Street, P.O. Box 507, Angola, IN 46703

Telephone: (260) 665-7586 -or- Toll Free (800) 348-0868

Fax: (260) 665-1339

[www.vestil.com](http://www.vestil.com) [info@vestil.com](mailto:info@vestil.com)

**TRAILER STABILIZING JACKS  
BFSJ-2748; CJ-BEAM; H-LO-J-BEAM; LO-J; SJ; SP-TOP-R**



**BFSJ**



**CJ-BEAM**



**LO-J-BEAM**



**LO-J & HI-J**



**SJ**



**SP-TOP**

**Receiving Instructions**

After delivery, remove the packaging from the product. Inspect the product closely to determine if it sustained damage during transport. If damage is discovered, record a complete description of it on the bill of lading. If the product is undamaged, discard the packaging.

**NOTE:** The end-user is solely responsible for confirming that product design, use, and maintenance comply with laws, regulations, codes, and mandatory standards applied where the product is used.

**Technical Service & Replacement Parts**

For answers to questions not addressed in these instructions and to order replacement parts, labels, and accessories, call our Technical Service and Parts Department at (260) 665-7586. The department can also be contacted online at <https://www.vestil.com/page-parts-request.php>.

**Electronic copies of Instruction Manuals**

Additional copies of this instruction manual may be downloaded from <https://www.vestil.com/page-manuals.php>.

<b>Table of Contents</b>	<b>Page</b>
Specifications.....	2
Capacities by Model.....	2
Signal Words.....	2
Safety Instructions.....	3
BFSJ-2748 & CJ-BEAM Exploded Views & Bills of Materials.....	4
H-LO-J-BEAM Exploded View & Bill of Materials.....	5
HI-J, LO-J, & LO-J-BEAM Exploded Views & Bills of Materials.....	6
SJ Exploded View & Bill of Materials.....	7
SP-TOP & SP-TOP-R Exploded Views & Bills of Materials.....	8
SP-TOP-BEAM Exploded Views & Bills of Materials.....	9
Using a Stabilizing Jack.....	10 - 12
Record of Satisfactory Condition.....	12
Inspecting and Maintaining the Stabilizing Jack.....	12 - 13
Labeling Diagram.....	14
Limited Warranty.....	15

# I. SPECIFICATIONS

Documents that provide specifications for each model of trailer stabilizing jack are available online to anyone who visits Vestil's website. Specifications include dimensions, net weight, and capacity information. Navigate to <https://www.vestil.com/product.php?FID=90>. Scroll to the *Product Specifications Table* portion of the page. Find the entry for the jack you purchased and click the button in the "PDF" column that looks like a pencil inside a blue-bordered box. A PDF file will open. This file is the specifications document. Print a copy of the document and keep it with your copy of this manual. The following is an exemplar specifications document for model BFSJ-2748.

**BIG FOOT TRAILER STABILIZING JACK - BFSJ-2748**

APPROX WEIGHT: 133.54 lbs.  
DOES NOT INCLUDE WEIGHT OF POWER OR PACKAGING!!!

\*\*\* ANY ADDITIONS, DELETIONS, OR OMISSIONS MUST BE CORRECTED ON THIS DRAWING AS THIS DRAWING WILL BE CONSIDERED ALL INCLUSIVE \*\*\*  
ALL GRAPHICS PROVIDED ARE FOR REFERENCE ONLY. IF CERTAIN DIMENSIONS ARE CRITICAL PLEASE VERIFY THOSE DIMENSIONS WITH YOUR SALESPERSON

**STANDARD FEATURES**

MODEL NUMBER: BFSJ-2748  
OVERALL WIDTH: 48"  
OVERALL LENGTH: 35 7/16"  
HANDLE LENGTH: 20"  
SERVICE RANGE: 39 1/2" TO 51"  
LIFTING CAPACITY: 40,000 LBS. (20 TONS)  
STATIC CAPACITY: 100,000 LBS. (50 TONS)  
TOP CAP: 8" DIAMETER  
WHEEL SIZE IS Ø10"  
REMOVABLE HANDLE USED TO MOVE & LIFT JACK  
HANDLE LENGTH IS 20"

**SPECIAL FEATURES**

NONE

DIMENSION TOLERANCE ± 1/4"

I, THE UNDERSIGNED, AGREE THAT THE PRODUCT AS REPRESENTED SATISFIES DESIGN AND DIMENSION REQUIREMENTS. I ALSO ACKNOWLEDGE MY DUTY TO CONFIRM PRODUCT AND INSTALLATION COMPLIANCE WITH ALL APPLICABLE FEDERAL, STATE AND LOCAL REGULATIONS AND STANDARDS.

**ANY MODIFIED UNITS ARE NON-RETURNABLE**

[ ] As drawn [ ] As marked

Signed: \_\_\_\_\_ Date: \_\_\_\_\_

Printed Name: \_\_\_\_\_

LEAD TIME WILL START UPON RECEIPT OF SIGNED APPROVAL DRAWING

FOR INTERNAL USE ONLY PROJECT SIGN OFF	DISTRIBUTOR'S NAME: <b>VESTIL MANUFACTURING</b>
SALES	P.O.# X
ENG.	W.O.# X
FAB.	DRAWN BY: B.NOTHNAGEL DATE: 05/15/2015 SALES: X
POWER	REFERENCE: X SCALE: 1:12 FILE NAME:
	QUOTED LEAD TIME: X QUOTE # 13-007-002




## CAPACITY BY MODEL

MODEL	UNIFORM STATIC CAPACITY	UNIFORM LIFTING CAPACITY	MODEL	UNIFORM STATIC CAPACITY	UNIFORM LIFTING CAPACITY
<b>BFSJ-2748</b>	100,000LB.	50,000LB.	<b>LO-J-BEAM-100</b>	100,000LB.	50,000LB.
<b>BFSJ-2748-100</b>	100,000LB.	50,000LB.	<b>SJ-35</b>	50,000LB.	5,000LB.
<b>CJ-BEAM-PN</b>	100,000LB.	50,000LB.	<b>SJ-35-2H</b>	50,000LB.	5,000LB.
<b>CJ-BEAM-SN</b>	100,000LB.	50,000LB.	<b>SJ-35-EF</b>	50,000LB.	5,000LB.
<b>H-LO-J-BEAM</b>	100,000LB.	40,000LB.	<b>SJ-40</b>	50,000LB.	5,000LB.
<b>HI-J</b>	100,000LB.	40,000LB.	<b>SP-TOP</b>	100,000LB.	40,000LB.
<b>HI-J-100</b>	100,000LB.	50,000LB.	<b>SP-TOP-100</b>	100,000LB.	50,000LB.
<b>LO-J</b>	100,000LB.	40,000LB.	<b>SP-TOP-BEAM</b>	100,000LB.	40,000LB.
<b>LO-J-100</b>	100,000LB.	50,000LB.	<b>SP-TOP-BEAM-100</b>	100,000LB.	50,000LB.
<b>LO-J-125</b>	100,000LB.	50,000LB.	<b>SP-TOP-R</b>	100,000LB.	40,000LB.
<b>LO-J-BEAM</b>	100,000LB.	40,000LB.	<b>SP-TOP-R-100</b>	100,000LB.	50,000LB.

NOTES: Pounds to kilograms conversion: 2.2LB. = 1KG  
Static capacity = maximum weight the jack can stabilize; and  
Lifting capacity = maximum weight the screw mechanism of the jack can lift.  
DO NOT exceed the load ratings!

## II. SIGNAL WORDS

This manual uses SIGNAL WORDS to draw readers' attention to risks that could cause personal injuries, as well as the probable seriousness of those injuries, if the product is misused in the ways described. The *NOTICE* signal word calls attention to uses of the product likely to result only in property damage. The following are signal words used in this manual and their definitions.

 <b>DANGER</b>	Identifies a hazardous situation which, if not avoided, <b>WILL</b> result in <b>DEATH</b> or <b>SERIOUS INJURY</b> . Use of this signal word is limited to the most extreme situations.
 <b>WARNING</b>	Identifies a hazardous situation which, if not avoided, <b>COULD</b> result in <b>DEATH</b> or <b>SERIOUS INJURY</b> .
 <b>CAUTION</b>	Indicates a hazardous situation which, if not avoided, <b>COULD</b> result in <b>MINOR</b> or <b>MODERATE</b> injury.
<b>NOTICE</b>	Identifies practices likely to result in product/property damage, such as operation that might damage the product.

## III. SAFETY INSTRUCTIONS

Vestil strives to identify foreseeable hazards associated with the use of its products. However, no manual can address every conceivable risk. To minimize the likelihood of being injured as a result of using this device, inspect and maintain the product as instructed in *INSPECTIONS & MAINTNENANCE* and exercise sound judgment whenever using this device.

### **WARNING**

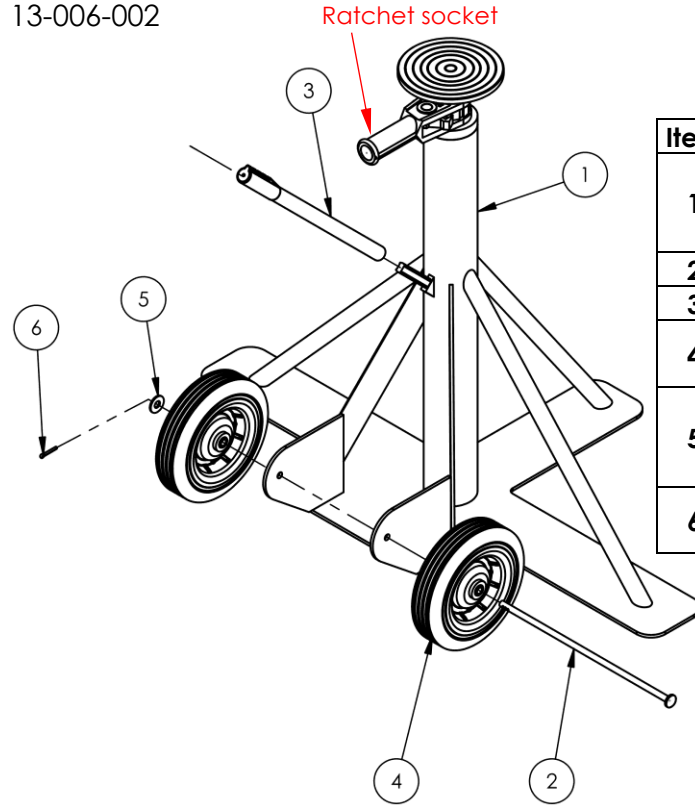
Risks of serious personal injuries or death.

- **Read this manual in its entirety before assembling, using, inspecting or servicing the product.** A copy of this manual should always be available to any person who assembles, installs, uses, inspects, or maintains this stabilizing jack.
- DO NOT use this jack to *support* trailers. It is a stabilizing jack and is not intended to support the weight of a trailer. ONLY use this jack in conjunction with trailer landing gear in nominal condition.
- DO NOT exceed the maximum rated load.
- Inspect the jack as instructed in [INSPECTING & MAINTAINING YOUR STABILIZING JACK](#) on p. 12-13. Remove the jack from service if an inspection reveals changes from [SATISFACTORY CONDITION](#). DO NOT use the jack until it is restored to satisfactory condition. ONLY use manufacturer-approved replacement parts to repair your stabilizing jack.
- DO NOT use a damaged jack. ONLY use a jack that is in satisfactory condition. See [RECORD OF SATISFACTORY CONDITION](#) on p. 12; also see [INSPECTING AND MAINTAINING YOUR STABILIZING JACK](#) on p. 12-13.
- DO NOT perform maintenance on, or attempt to repair, a jack that is stabilizing a trailer. If you suspect that a first jack that is currently in use requires maintenance/repairs, deploy a replacement jack before removing the first jack.
- ONLY qualified maintenance personnel should maintain and repair this product. An improperly maintained jack could become unsafe to use.
- ONLY use a stabilizing jack on compacted, improved surfaces (concrete) that are even and level. This jack cannot be used to stabilize trailers parked on unimproved, uneven, or sloping surfaces. *EXCEPTION: IF a loading dock ramp is sloped, stabilizing jacks may be used to stabilize a trailer parked on the ramp. All jacks used to stabilize the trailer must stand on the ramp so that jacks are perpendicular to the underside of the trailer.*
- DO NOT use a jack unless all labels are in place, undamaged, and easily readable from a reasonable, safe distance. DO NOT remove or obscure labels.
- DO NOT modify this jack in any way. Modifications automatically void the [LIMITED WARRANTY](#) (see p. 15) and might make the jack unsafe to use.

**IV. EXPLODED VIEWS & BILLS OF MATERIALS**

**BFSJ-2748 & BFSJ-2748-100 EXPLODED VIEW AND BILL OF MATERIALS**

13-006-002

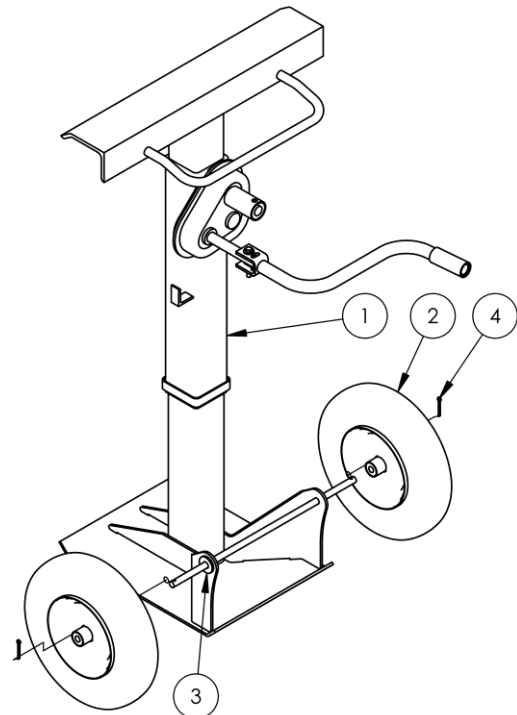


Item	Part no.	Description	Qty.
1	13-514-007	FRAME, WELDMENT	1
	13-514-044	BFSJ-2748-100	1
2	13-112-001	PIN, AXLE	1
3	13-525-001	HANDLE ASS'Y	1
4	16-132-287	WHEEL, Ø10" x 2 1/2", 13mm STEEL HUB	2
5	33012	FLAT WASHER, LOW CARBON, ZINC FINISH, 1/2"	1
6	65125	COTTER PIN Z PLATED, 3/16" x 1 1/2"	1

**CJ-BEAM-PN; CJ-BEAM-SN; CJ-BEAM-SN-AH EXPLODED VIEW AND BILL OF MATERIALS**

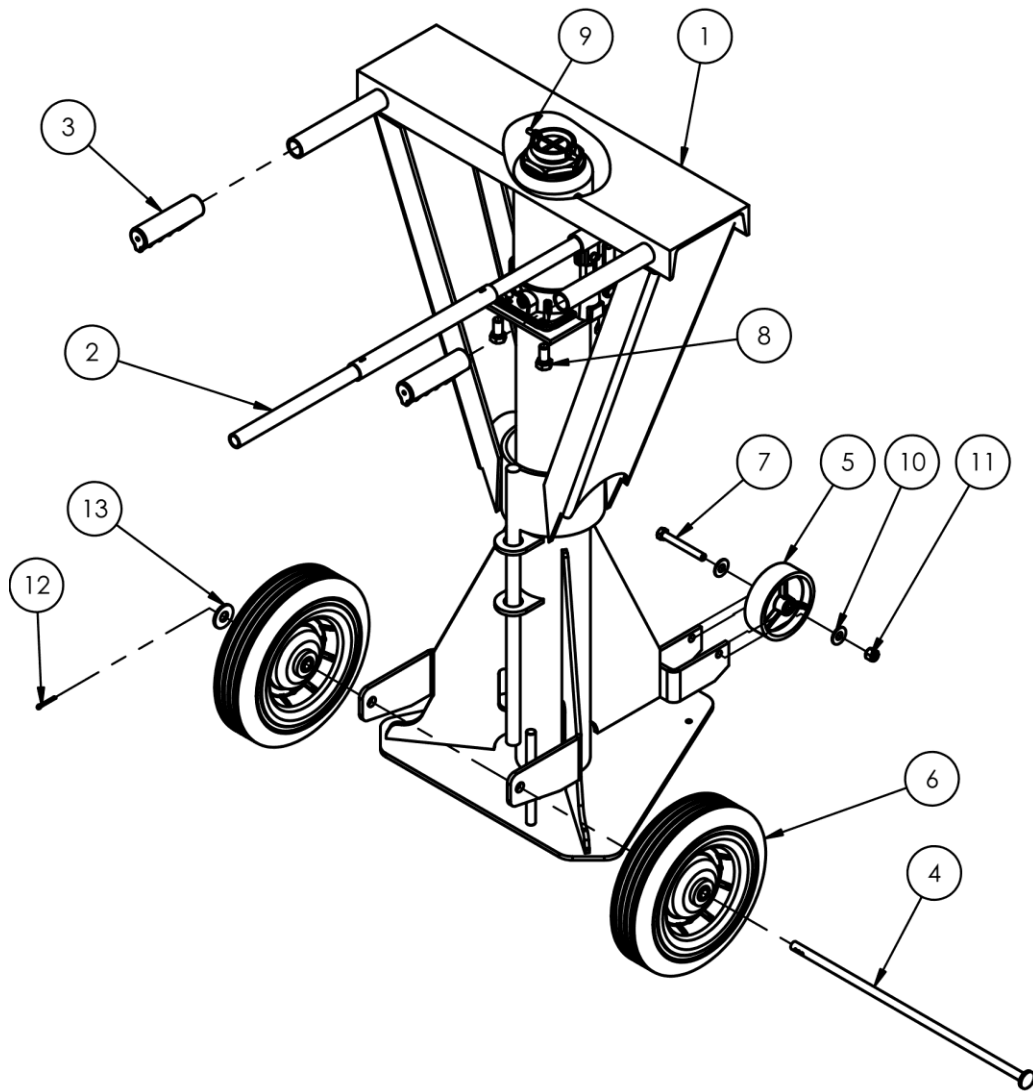
13-006-076

Item	Part no.	Description	Qty.
1	13-514-055	WELDMENT, FRAME	1
	13-514-070	CJ-BEAM-PN & CJ-BEAM-SN CJ-BEAM-SN-AH	
2	16-132-126	WHEEL SUBASSEMBLY CJ-BEAM-PN: PNEUMATIC TIRE, 4" X 16"	2
	16-132-246	CJ-BEAM-SH: FOAM FILLED TIRE, 4" X 16"	2
	16-132-246	CJ-BEAM-SN-AH: FOAM FILLED TIRE, 4" X 16"	2
3	33016	FLAT WASHER, LOW CARBON, USS, ZINC PLATED, 5/8"	4
4	65127	COTTER PIN Z PLATED, 3/16 x 2	2



## H-LO-J-BEAM EXPLODED VIEW AND BILL OF MATERIALS

13-006-007

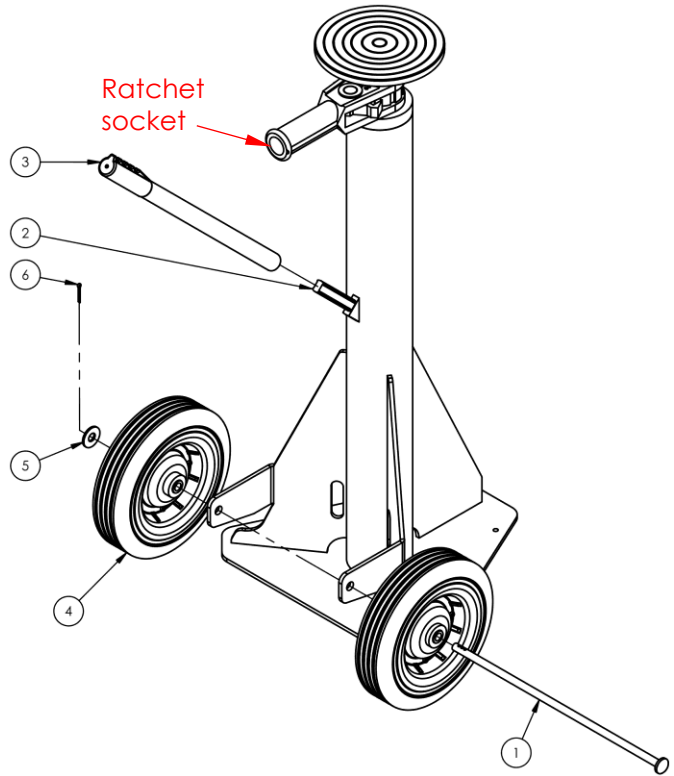


Item	Part no.	Description	Qty.
1	13-514-010	WELDMENT, FRAME	1
2	13-543-001	ASSEMBLY, J-20 TON JACK & HANDLE	1
3	13-025-023	HANDLE, GRIP, 1 1/8" I.D., RED	2
4	13-112-001	PIN, AXLE	1
5	16-132-007	4 X 1-1/4 SEMI STEEL WHEEL (3/8" PLAIN BORE)	1
6	16-132-287	WHEEL, Ø10" x 2 1/2", 13mm STEEL HUB	2
7	11115	HHCS, #2 Z PLATED, GRADE A, 3/8 - 16 x 3 LG.	1
8	11205	HEX BOLT, GRADE A, ZINC PLATED, 1/2"-13X 1"	3
9	25334	1/4-20 X 1" LG SOCKET SET SCREW	2
10	33008	FLAT WASHER, LOW CARBON, USS, ZINC PLATED, 3/8"	2
11	37024	NYLON INSERT LOCK NUT, GRADE 2, ZINC FINISH, 3/8"-16	1
12	65077	COTTER PIN, ZINC PLATED, 1/8" X 1-1/4"	1
13	33012	FLAT WASHER, LOW CARBON, ZINC FINISH, 1/2"	1

# HI-J; HI-J-100; LO-J; LO-J-100; LO-J-125 EXPLODED VIEW AND BILL OF MATERIALS

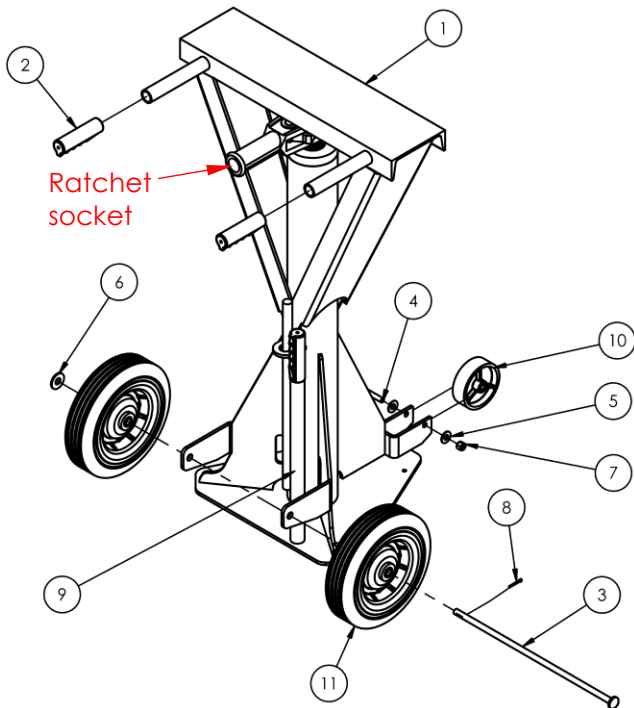
13-006-005

Item	Part no.	Description	Qty.
1	13-112-001	PIN, AXLE	1
2	13-514-058	WELDMENT, FRAME	1
	13-514-073	HI-J	1
	13-514-001	LO-J	1
	13-514-019	LO-J-100	1
	13-514-019	LO-J-125	1
3	13-525-001	HANDLE ASS'Y	1
4	16-132-287	WHEEL, Ø10" x 2 1/2", 13mm STEEL HUB	2
5	33012	FLAT WASHER, LOW CARBON, ZINC FINISH, 1/2"	1
6	65077	COTTER PIN, ZINC PLATED, 1/8" X 1-1/4"	1



# LO-J-BEAM & LO-J-BEAM-100 EXPLODED VIEW AND BILL OF MATERIALS

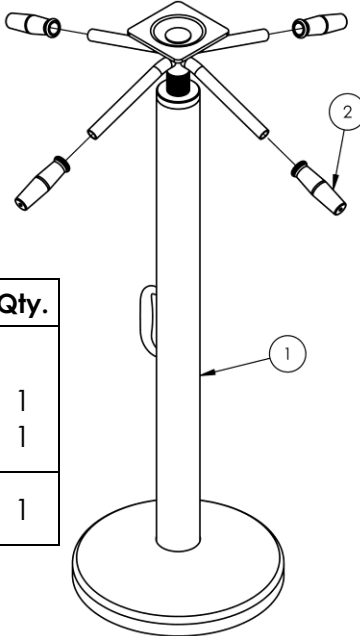
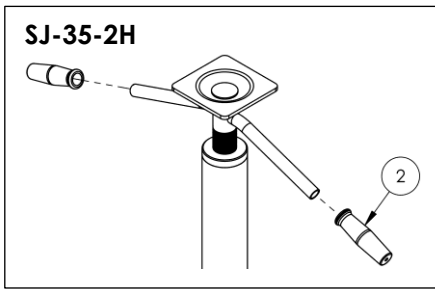
13-006-027



Item	Part no.	Description	Qty.
1	13-514-043	WELDMENT, FRAME	1
	13-514-026	LO-J-BEAM-100	1
2	13-025-023	HANDLE, GRIP, 1 1/8" I.D., RED	2
3	13-112-001	PIN, AXLE	1
4	11115	HHCS, #2 Z PLATED, GRADE A, 3/8 - 16 x 3 LG.	1
5	33008	FLAT WASHER, LOW CARBON, USS, ZINC PLATED, 3/8"	2
6	33012	FLAT WASHER, LOW CARBON, ZINC FINISH, 1/2"	1
7	37024	NYLON INSERT LOCK NUT, GRADE 2, ZINC FINISH, 3/8"-16	1
8	65077	COTTER PIN, ZINC PLATED, 1/8" X 1-1/4"	1
9	13-525-001	HANDLE ASS'Y	1
10	16-132-007	4 X 1-1/4 SEMI STEEL WHEEL (3/8" PLAIN BORE)	1
11	16-132-287	WHEEL, Ø10" x 2 1/2", 13mm STEEL HUB	2

### SJ-35; SJ-35-2H EXPLODED VIEW AND BILL OF MATERIALS

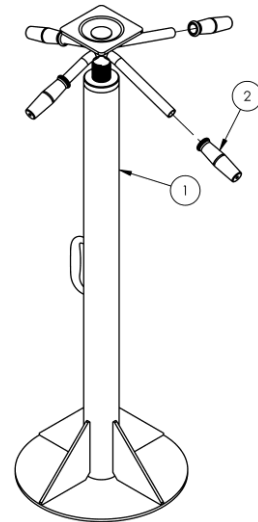
13-006-004



Item	Part no.	Description	Qty.
1	13-514-023	WELDMENT, FRAME SJ-35	1
	13-514-024	SJ-35-2H	1
2	13-514-001	HANDLE/GRIP /KNOB	1

### SJ-40 EXPLODED VIEW & BILL OF MATERIALS

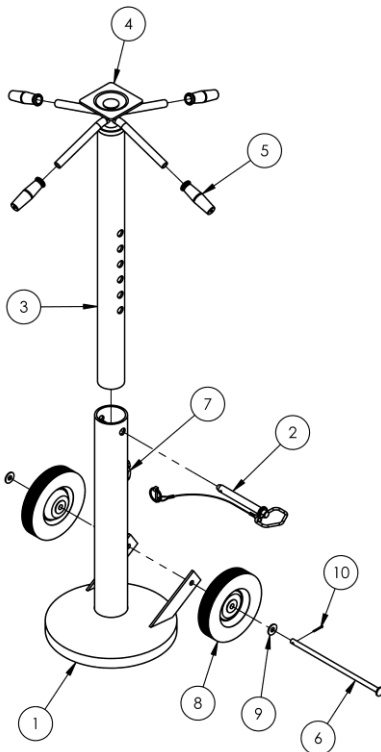
13-006-016



Item	Part no.	Description	Qty.
1	13-514-016	WELDMENT, FRAME	1
2	13-025-043	HANDLE/GRIP/KNOB	4

### SJ-35-EF EXPLODED VIEW AND BILL OF MATERIALS

13-006-015

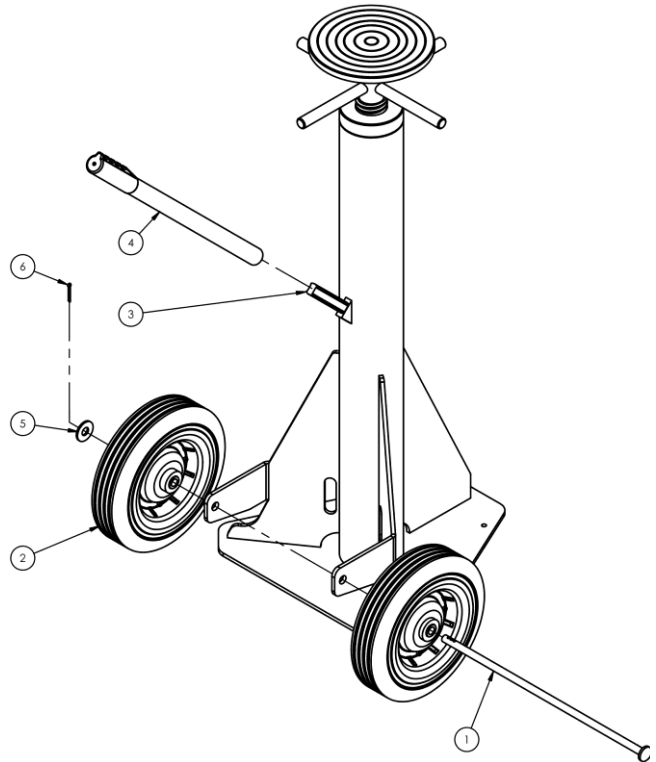


Item	Part no.	Description	Qty.
1	13-514-046	WELDMENT, TRAILER STABILIZING JACKS	1
2	99-112-057	PIN HEIGHT ADJUSTMENT	1
3	13-014-019	FRAME, ADJUSTABLE PIPE, INNER	1
4	13-036-003	HEAD ASSEMBLY, 4 HANDLES	1
5	13-025-043	HANDLE/GRIP/KNOB	4
6	13-112-006	PIN, 8" WHEEL	1
7	08-145-008	SPECIALTY HARDWARE, SNAP HOOK, Ø1/4	1
8	16-132-254	WHEEL, 8" HARD RUBBER	2
9	33010	WASHER, FLAT	2
10	65077	COTTER PIN, ZINC PLATED, 1/8" X 1-1/4"	1

### SP-TOP & SP-TOP-100 EXPLODED VIEW AND BILL OF MATERIALS

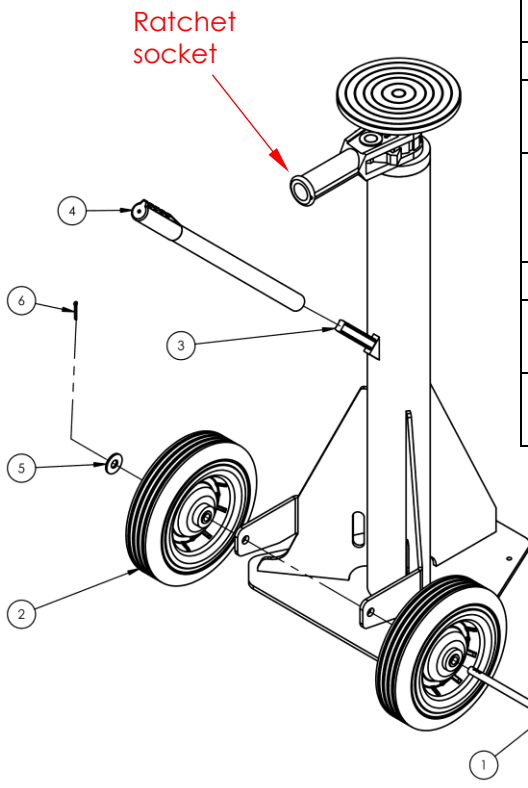
13-006-008

Item	Part no.	Description	Qty.
1	13-112-001	PIN, AXLE	1
2	16-132-287	WHEEL, Ø10" x 2 1/2", 13mm STEEL HUB	2
3	13-514-012	WELDMNT, FRAME SP-TOP	1
	13-514-059	SP-TOP-100	1
4	13-525-001	HANDLE ASS'Y	1
5	33012	FLAT WASHER, LOW CARBON, ZINC FINISH, 1/2"	1
6	65077	COTTER PIN, ZINC PLATED, 1/8" X 1-1/4"	1



### SP-TOP-R & SP-TOP-R-100 EXPLODED VIEW AND BILL OF MATERIALS

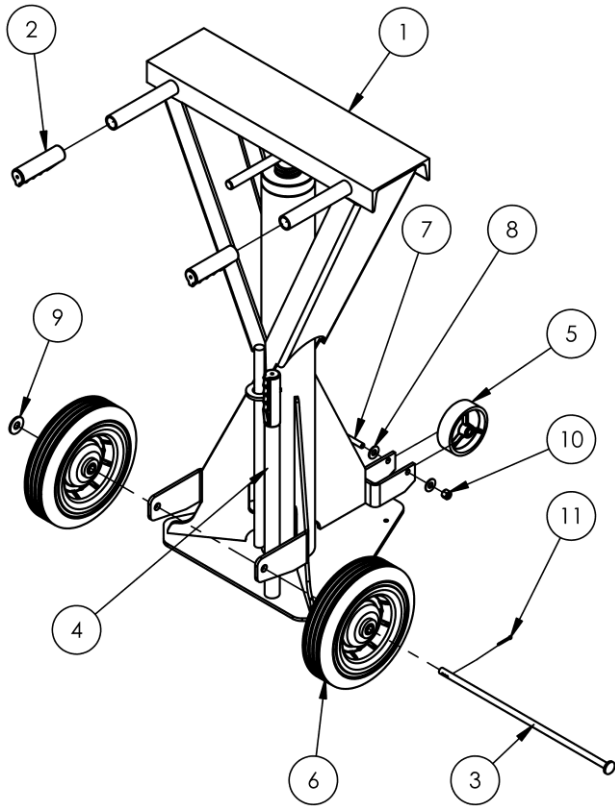
13-006-028



Item	Part no.	Description	Qty.
1	13-112-001	PIN, AXLE	1
2	16-132-287	WHEEL, Ø10" x 2 1/2", 13mm STEEL HUB	2
3	13-514-001	WELDMNT, FRAME SP-TOP-R	1
	13-514-019	SP-TOP-R-100	1
4	13-525-001	HANDLE ASS'Y	1
5	33012	FLAT WASHER, LOW CARBON, ZINC FINISH, 1/2"	1
6	65077	COTTER PIN, ZINC PLATED, 1/8" X 1-1/4"	1

### SP-TOP-BEAM EXPLODED VIEW AND BILL OF MATERIALS

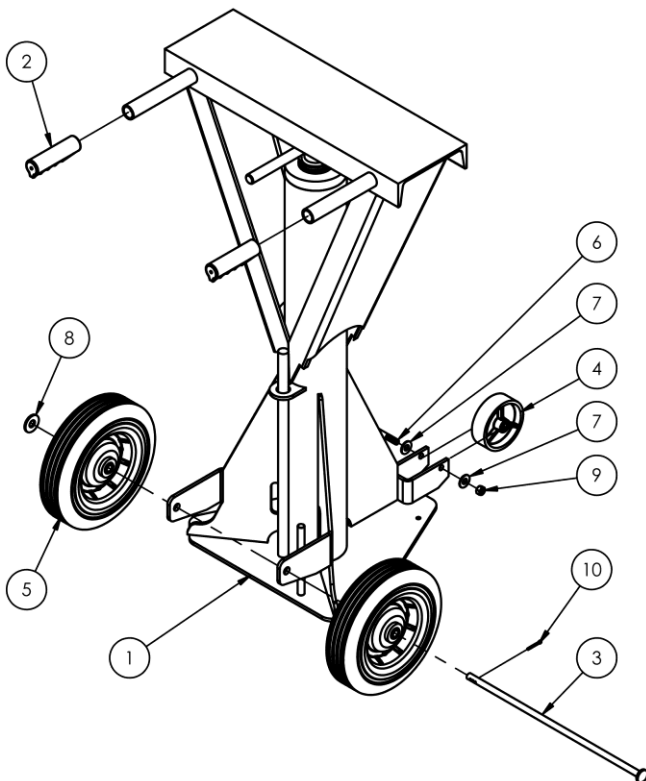
13-006-039



Item	Part no.	Description	Qty.
1	13-514-027	WELDMENT, FRAME SP-TOP-BEAM	1
2	13-025-023	HANDLE, GRIP, 1 1/8" I.D., RED	2
3	13-112-001	PIN, AXLE	1
4	13-525-001	HANDLE ASS'Y	1
5	16-132-007	4 X 1-1/4 SEMI STEEL WHEEL (3/8" PLAIN BORE)	1
6	16-132-287	WHEEL, Ø10" x 2 1/2", 13mm STEEL HUB	2
7	11115	HHCS, #2 Z PLATED, GRADE A, 3/8 - 16 x 3 LG.	1
8	33008	FLAT WASHER, LOW CARBON, USS, ZINC PLATED, 3/8"	2
9	33012	FLAT WASHER, LOW CARBON, ZINC FINISH, 1/2"	1
10	37024	NYLON INSERT LOCK NUT, GRADE 2, ZINC FINISH, 3/8"-16	1
11	65077	COTTER PIN, ZINC PLATED, 1/8" X 1-1/4"	1

### SP-TOP-BEAM-100 EXPLODED VIEW AND BILL OF MATERIALS

13-006-040



Item	Part no.	Description	Qty.
1	13-514-028	WELDMENT, FRAME	1
2	13-025-023	HANDLE, GRIP, 1 1/8" I.D., RED	2
3	13-112-001	PIN, AXLE	1
4	16-132-007	4 X 1-1/4 SEMI STEEL WHEEL (3/8" PLAIN BORE)	1
5	16-132-287	WHEEL, Ø10" x 2 1/2", 13mm STEEL HUB	2
6	11116	HHCS #2 Z PLATED, GRADE A, Ø3/8 x 3 1/4 LG	1
7	33008	FLAT WASHER, LOW CARBON, USS, ZINC PLATED, 3/8"	2
8	33012	FLAT WASHER, LOW CARBON, ZINC FINISH, 1/2"	1
9	36106	HEX NUT, GRADE A, ZINC PLATED, 3/8-16	1
10	65077	COTTER PIN, ZINC PLATED, 1/8" X 1-1/4"	1

## V. USING A STABILIZING JACK

Personnel with a great deal of experience loading and unloading trailers should determine whether the use of trailer stabilizing jacks is necessary on a case-by-case basis as well as the necessary number of jacks and the optimal location for each jack. Compelling reasons to use stabilizing jacks include, but are not limited to the following:

- Reducing the risk of semitrailer landing gear failure.
- Preventing the front (hitch end) of a semitrailer from lifting off of the ground when a fork truck enters the trailer. Tipping/lifting can occur if the trailer's wheels and axles are shifted forward. A wheels forward configuration places the wheels farther away from the dock when the trailer is parked at the dock than is typical. Deploying stabilizing jacks beneath the rear corners of the trailer greatly reduces the risk of trailer tipping.
- Stabilizing trailers when heavy fork trucks are used to unload them.

Trailer stabilizing jacks are vertically adjustable. This adjustability allows the top of a jack to be brought into solid contact with the underside of a semitrailer. The trailer should be parked at a loading dock and be disconnected from its semi-tractor. The semitrailer must be parked on even, flat, level concrete and be supported by its own, integral landing gear. Stabilizing jacks are not capable of supporting semitrailers and must not be used in place of landing gear. *IF a loading dock ramp is sloped, stabilizing jacks may be used to stabilize a trailer parked on the ramp. All jacks used to stabilize the trailer must stand on the ramp so that jacks are perpendicular to the underside of the trailer. NEVER use a stabilizing jack unless it is oriented perpendicularly to the underside of the trailer.*

Vestil recommends that stabilizing jacks be used *in pairs*. Best practice is to deploy pairs of jacks symmetrically about the centerline (long axis) of the trailer. For example, arrange a pair of jacks with 1 jack under each corner of the same end of the trailer. Symmetrically deployed jacks most effectively stabilize a trailer against rolling/tipping. Before deploying a stabilizing jack under a trailer, inspect the jack as described in the [INSPECTING & MAINTAINING THE JACK](#) section of this manual on p. 12-13. Confirm that the selected jack is in satisfactory condition before installing it under a trailer.

Be aware of your jack's load ratings. Load ratings (capacities) are provided in the [CAPACITIES BY MODEL](#) section on p. 2, as well as on a label applied to the side of the jack. See [LABELING DIAGRAM](#) on p. 14. Two types of ratings appear on the label:

- 1) Static capacity = maximum weight the jack can stabilize; and
- 2) Lifting capacity = maximum weight the screw mechanism of the jack can lift.

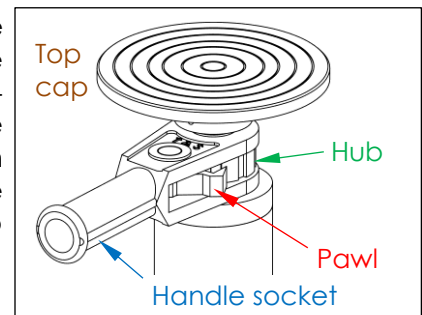
DO NOT exceed the load ratings!

Before installing stabilizing jacks beneath a semitrailer:

- 1) The trailer must be entirely supported by integral landing gear in nominal condition.
- 2) Trailer wheels must be properly immobilized to resist creep or roll, for instance, by using chocks.
- 3) The surface on which the jack(s) will be used must be even, level, intact concrete to prevent the jack from sinking into the ground. Asphalt is somewhat malleable, especially when hot. Using stabilizing jacks on asphalt surfaces is not recommended because asphalt can compress beneath the jack and thereby cause the trailer to wobble during loading/unloading operations.
- 4) Confirm that the underside of the trailer is sound especially where there will be contact with the top cap of each stabilizing jack. If a point of contact is unsound, the jack might break through or otherwise damage the trailer.

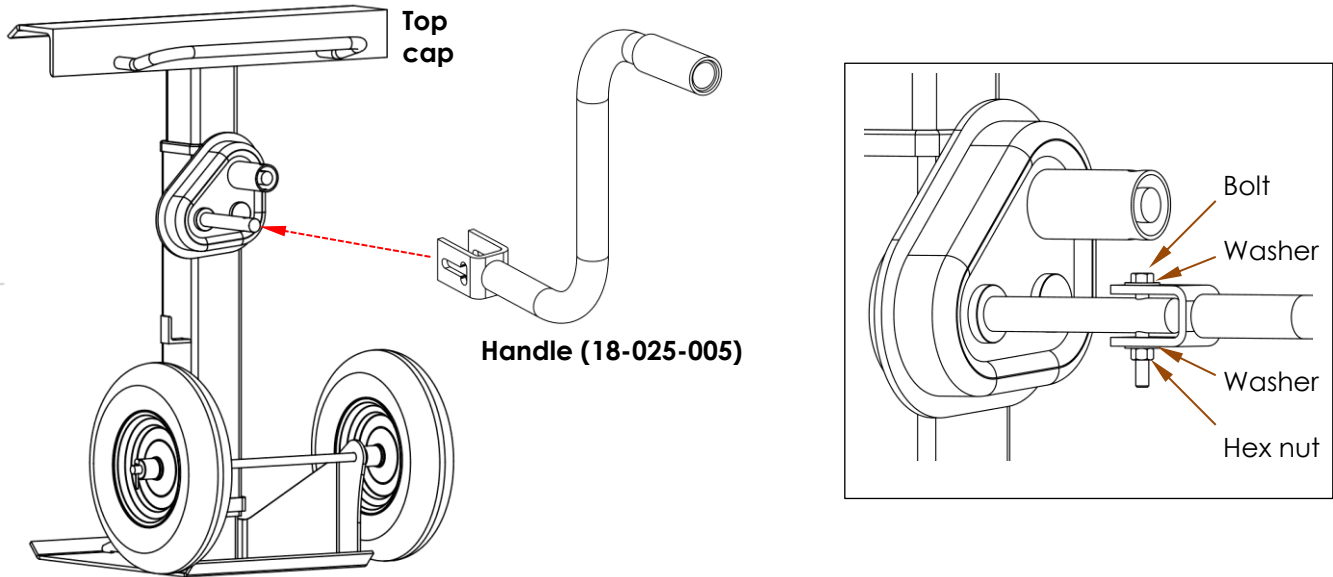
### V(A). RAISING AND LOWERING THE TOP CAP OF YOUR STABILIZING JACK

[BFSJ-2748](#), [LO-J-BEAM](#), [LO-J](#), [HI-J](#), and [SP-TOP-R](#) model jacks utilize ratcheting mechanisms to raise and lower the top cap. Refer to the appropriate [EXPLODED VIEW](#) on p. 4-9. Insert the handle assembly (13-525-001) into the ratchet socket. This same handle is used to move the jack from place-to-place. How the pawl of the ratchet interacts with the screw hub determines whether the jack extends or retracts as the handle is moved. Moving the handle to the right, and then back to center, causes the jack to extend. Moving the handle to the left, and then back to center, causes the jack to retract.

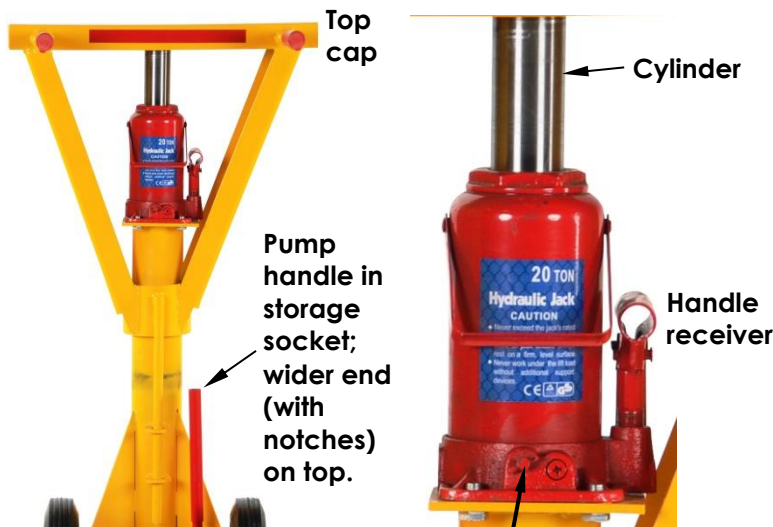


[Models SP-TOP, SJ-35, and SJ-35-EF](#) utilize handles that are affixed to the screw hub. Use the hub handles to turn the screw clockwise or counterclockwise to raise or lower the top cap, respectively.

Model CJ-BEAM integrates a hand-cranked gear box mechanism to raise and lower the top cap. Attach the end of the handle to the drive shaft with a 3/8"-16 x 3" hex head bolt (11115), 2 flat washers (33008), and 3/8"-16 nut (36106). Turn the handle clockwise to raise the top cap; turn it counterclockwise to lower the top cap.



Model H-LO-J-BEAM utilizes a hydraulic jack. To raise the top cap of the jack, remove the handle from the storage socket. The handle consists of 2 short sections of steel tubing. There are 2 small, square notches in the free end of the wider segment. These notches receive the release valve pin. By sliding the wider end of the handle over the release valve and seating the pin in the notches, the release valve can be opened and closed. Open the valve by turning the handle counterclockwise. Close the valve by turning the handle clockwise. The valve must be closed in order for the cylinder to extend and raise the top cap. Open the valve to lower the top cap. Insert the wider end of the handle into the handle receiver and move the handle up and down to extend the cylinder.

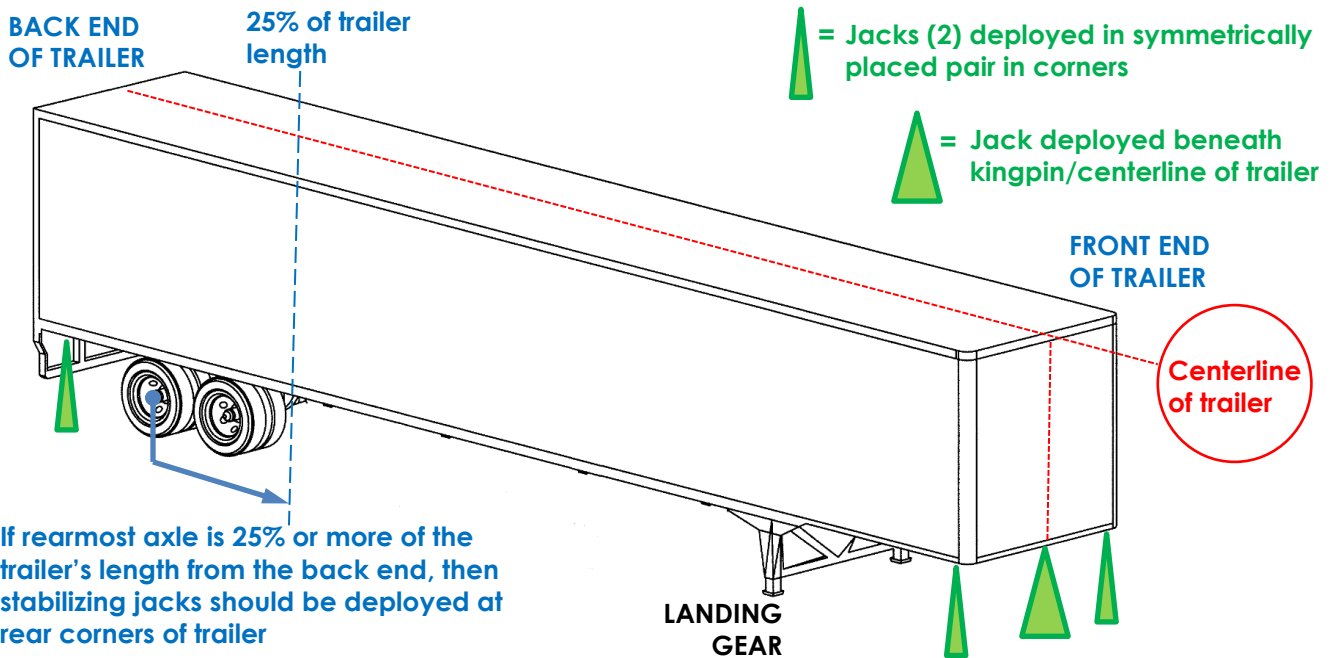


**Release valve & valve pin:** Put notched end of handle over release valve and seat valve pin in notches; then turn clockwise to close or counterclockwise to open. Valve must be closed in order to extend the cylinder and raise the top cap.



**V(B). STABILIZING A TRAILER**

Move your jack by tipping it onto its wheels. Confirm that the trailer's landing gear is deployed and solidly supporting the trailer. Then, roll the jack under the hitch-end (front) of the semitrailer. If using a single jack, position the center of the jack's top cap on the centerline of the trailer, i.e. midpoint of the width of the trailer. If using a pair of jacks, place one under each *front* corner.



If rearmost axle is 25% or more of the trailer's length from the back end, then stabilizing jacks should be deployed at rear corners of trailer

**NOTE:** Additional stabilizing jacks must be installed under the rear corners of the semitrailer if the distance from the rearmost axle to the back end of the semi-trailer is more than ¼ of the overall length of the trailer. Best practice, if there is any doubt whether jacks are needed at the rear corners, is to deploy a stabilizing jack under each of the 4 corners of the trailer.

Adjust the height of the jack so that the top cap (of the jack) presses firmly against the underside of the semitrailer frame. Do not raise the top cap any higher than is necessary for it to firmly contact the underside of the trailer. If the top cap is raised too high, the landing gear could be lifted off of the ground. The landing gear must at all times remain in solid contact with the ground in order to provide support for the front end of the trailer.

Jacks must be removed before a trailer can be connected to a semi-tractor. To remove a stabilizing jack, lower the top cap out of contact with the bottom of the trailer. Continue lowering the top cap until the jack can be tipped onto its wheels and rolled out from underneath the trailer.

**VI. RECORD OF SATISFACTORY CONDITION**

Record the condition of the jack before putting it into service for the first time. Include observations about all mechanisms and features, including the handle, handle grip(s), welds, the frame, ratchet mechanism (if applicable), top cap, wheels, and axle. Thoroughly photograph the unit so that all features are clearly imaged. Take close range photographs of all labels applied to the unit. Take a video that shows how the top cap extension-retraction process works. Describe the amount of force/effort necessary to operate the extension-retraction mechanism. Collect all writings, recordings, and photographs in a file. This file is a Record of the unit in satisfactory condition. During all future inspections, compare the condition of your jack to the Record to determine if the unit is in satisfactory condition. See [INSPECTIONS & MAINTENANCE](#) on p. 12-13.

**VII. INSPECTING & MAINTAINING THE STABILIZING JACK (ALL MODELS)**

Inspections and repairs should only be performed by qualified persons. Compare the results of each inspection to the [RECORD OF SATISFACTORY CONDITION](#) (the "RECORD"). Do not use the jack unless all parts are in satisfactory condition. Replace parts that are not in satisfactory condition before using the

jack again. **DON'T GUESS! If you have any questions about the condition of your jack, speak with [TECHNICAL SERVICE](#) personnel.** The phone number is provided on the cover page of this manual.

**Never make temporary repairs of damaged or missing parts.** Only use manufacturer-approved replacement parts.

Make a dated record of each inspection that includes a written account of your observations as well as a description of repairs made.

(A) Each day inspect the jack for the following conditions:

- 1) Visible damage to the screw, base, or screw hub.
- 2) Free movement of the top cap.
- 3) Oil leaks (H-LO-J-BEAM only).

(B) At least once per month, inspect the following components. DO NOT use the jack until it is restored to satisfactory condition.

- 1) Screw threads
  - a) Inspect threads for severe wear or damage: If the screw wobbles inside the screw hub/jack body, the screw threads are significantly worn. The screw assembly should be replaced before returning the jack to service.
  - b) Determine if threads are adequately greased: Apply a standard bearing grease to the screw threads. Fully extend the screw & apply grease liberally to the threads; then wind the screw back into the jack body to coat the threads. In colder climates, synthetic grease will reduce the amount of effort required to extend and retract the screw. Remove grease from the frame and handles before returning the jack to service.
- 2) Height adjustment mechanism: The screw or cylinder (hydraulically actuated units) should extend and retract smoothly.
- 3) Jack frame: Examine the jack for cracked welds or metal fatigue.
- 4) Wheels, axles, or wheel bearings: Inspect for looseness, significant wear, punctures, dry rot, or other damage. Damaged wheels should be replaced
- 5) Handle grips: examine each grip for damage, looseness, etc. Install adhesive to the inside of a loose grip and reinstall it.
- 6) Hydraulic oil (H-LO-J-BEAM only): the oil level should be just below the fill hole of the reservoir with the jack in the lowered position. Replace the oil with hydraulic oil of viscosity grade 70 to 85 SUS at 100°F, (ISO 15 at 40°C).
- 7) Labels (refer to [LABELING DIAGRAM](#) on p. 14): the jack should be labeled at all times as shown in the diagram. Replace any label that is damaged or not easily readable.

### VIII. LABELING DIAGRAM

Label content and location are subject to change. Your product might not be labeled exactly as shown in the diagram below. If the labels applied to your unit differ from those shown in the diagram, contact [TECHNICAL SERVICE](#) and report the inconsistency. Thoroughly photograph the unit when you first receive it as discussed in the [RECORD OF SATISFACTORY CONDITION](#) section on p. 12. Make sure that your Record includes at least 1 photograph of each label. Replace all labels that are, or later become, damaged, missing, or not easily readable (e.g. faded). To order replacement labels, contact the [TECHNICAL SERVICE & PARTS DEPARTMENT](#) online at <https://www.vestil.com/page-parts-request.php> or by calling (260) 665-7586 and asking the operator to connect you to the [PARTS DEPARTMENT](#).

A: Label 233, 234, or 265

<p><b>Material handling is inherently dangerous. Improper or careless use might result in serious personal injury or death. To reduce the likelihood of misuse:</b></p> <ul style="list-style-type: none"> <li>• Retain a copy of owner's manual for as long as jack is used. Refresh your understanding of jack operation before using it by reading manual.</li> <li>• DO NOT use jack to support trailers. This jack is designed to stabilize trailers supported by landing gear.</li> <li>• Jack will not stabilize trailers parked on uneven or sloped ground. ONLY park trailers on flat, even ground.</li> </ul>	
<p><b>ADVERTENCIA</b></p> <p>El manejo del material es inherentemente peligroso. El mal uso o descuido podría resultar en serios daños al personal o muerte. Para reducir la posibilidad del mal uso:</p> <ul style="list-style-type: none"> <li>• Mantenga una copia del manual del propietario durante tanto tiempo como se use el gato. Refresque su comprensión del uso del gato antes de usarlo leyendo el manual.</li> <li>• No use el gato para soportar remolques. Este gato está diseñado para estabilizar remolques apoyados por el soporte de freno.</li> <li>• El gato no estabilizará remolques aparcados a niveles desiguales o en pendientes. Solo aparque los remolques en suelos planos y a nivel.</li> </ul>	
<p><b>AVERTISSEMENT</b></p> <p>La manutention est intrinsèquement dangereuse. L'utilisation incorrecte ou négligente pourrait causer de graves blessures ou la mort. Pour réduire la probabilité d'utilisation incorrecte :</p> <ul style="list-style-type: none"> <li>• Garder une copie du guide d'utilisation aussi longtemps que le véhicule soit utilisé. Rafraîchir votre compréhension de l'opération du cric avant de l'utiliser en relisant le guide d'utilisation.</li> <li>• NE PAS utiliser le cric pour le soutien de remorques. Ce vérin est conçu pour stabiliser les remorques avec béquilles de parking.</li> <li>• Le vérin ne stabilisera pas les remorques sur un terrain rugueux ou sur une pente. Gérer SEULEMENT les remorques sur un terrain plat.</li> </ul>	
<p><b>TRAILER STABILIZING JACK</b>  <b>GATO ESTABILIZADOR DE TRAILER</b>  <b>CRIC STABILISATEUR POUR REMORQUE</b></p> <p>STATIC CAPACITY: 50,000 lbs. CAPACIDAD ESTÁTICA: 22,680 kg      LIFTING CAPACITY: 5,000 lbs. CAPACIDAD DE ELEVACIÓN: 2,268 kg</p>	
<p>1. Spot trailer and set dolly wheels. Do not place jacks before disconnecting trailer.</p> <p>1. Situar el trailer y colocar las ruedas (no coloque los gatos estabilizadores antes de haber desenganchado el trailer).</p>	<p>2. Chock wheels. Place jacks under nose-end of trailer.</p> <p>2. Asegure los ruedas. Ponga los gatos estabilizadores debajo de la esquina delantera del trailer.</p>
<p>3. Adjust jacks so top plate is firmly set under tongue or frame of trailer.</p> <p>3. Ajuste el gato estabilizador de modo que la placa superior se apoye firmemente en el pasador o bajo el bastidor del trailer.</p>	<p>4. Remove jacks before driving tractor back under trailer.</p> <p>4. Retire los gatos estabilizadores antes de retroceder el camión bajo el trailer.</p>
<p>5. Adjust the crics de façon à ce que le plateau supérieur repose solidement sur le point central ou le chassis de la remorque.</p>	<p>6. Retire les crics avant de reculer le tracteur sous la remorque.</p>
<p>233 rev 0414</p>	
<p>THE UNITED STATES FEDERAL (OSHA) LAW REGARDING THE REQUIREMENTS FOR USE OF STABILIZING JACKS ON SEMITRAILERS MAY BE FOUND IN 29 CFR 1910.178 (K) (3) &amp; 29 CFR 1910.244.</p> <p>LA LEY FEDERAL DE ESTADOS UNIDOS (OSHA) REFERENTE A LOS REQUERIMIENTOS PARA EL USO DE GATOS ESTABILIZADORES EN SEMIRREMOLQUES SE ENCUENTRA EN 29 CFR 1910.178 (K) (3) &amp; 29 CFR 1910.244.</p> <p>LA LOI FÉDÉRALE CONCERNANT LES EXIGENCES (OSHA) POUR L'UTILISATION DE CRICS SUR SEMI-REMORQUES PEUT ÊTRE TROUVÉE DANS LA SECTION 29 CFR 1910.178 (K) (3) &amp; 29 CFR 1910.244.</p>	



B: Label 252 (Red, reflective)



## IX. LIMITED WARRANTY

Vestil Manufacturing Company ("Vestil") warrants this product to be free of defects in material and workmanship during the warranty period. Our warranty obligation is to provide a replacement for a defective, original part covered by the warranty after we receive a proper request from the Warrantee (you) for warranty service.

### Who may request service?

Only a warrantee may request service. You are a warrantee if you purchased the product from Vestil or from an authorized distributor AND Vestil has been fully paid.

### Definition of "original part"?

An original part is a part used to make the product as shipped to the Warrantee.

### What is a "proper request"?

A request for warranty service is proper if Vestil receives: 1) a photocopy of the Customer Invoice that displays the shipping date; AND 2) a written request for warranty service including your name and phone number. Send requests by one of the following methods:

<u>US Mail</u>	<u>Fax</u>	<u>Email</u>
Vestil Manufacturing Company 2999 North Wayne Street, PO Box 507 Angola, IN 46703	(260) 665-1339 <u>Phone</u> (260) 665-7586	<a href="mailto:info@vestil.com">info@vestil.com</a> Enter "Warranty service request" in the subject field.

In the written request, list the parts believed to be defective and include the address where replacements should be delivered. After Vestil receives your request for warranty service, an authorized representative will contact you to determine whether your claim is covered by the warranty. Before providing warranty service, Vestil will require you to send the entire product, or just the defective part (or parts), to its facility in Angola, IN.

### What is covered under the warranty?

The warranty covers defects in the following original, dynamic parts: motors, hydraulic pumps, motor controllers, and cylinders. It also covers defects in original parts that wear under normal usage conditions ("wearing parts"), such as bearings, hoses, wheels, seals, brushes, and batteries.

### How long is the warranty period?

The warranty period for original dynamic components is 90 days. For wearing parts, the warranty period is 90 days. Both warranty periods begin on the date Vestil ships the product to the Warrantee. If the product was purchased from an authorized distributor, the periods begin when the distributor ships the product. Vestil may, at its sole discretion, extend a warranty period for products shipped from authorized distributors by up to 30 days to account for shipping time.

### If a defective part is covered by the warranty, what will Vestil do to correct the problem?

Vestil will provide an appropriate replacement for any covered part. An authorized representative of Vestil will contact you to discuss your claim.

### What is not covered by the warranty?

The Warrantee (you) is responsible for paying labor costs and freight costs to return the product to Vestil for warranty service.

### Events that automatically void this Limited Warranty.

- Misuse;
- Negligent assembly, installation, operation or repair;
- Installation/use in corrosive environments;
- Inadequate or improper maintenance;
- Damage sustained during shipping;
- Collisions or other accidents that damage the product;
- Unauthorized modifications: Do not modify the product IN ANY WAY without first receiving written authorization from Vestil.

### Do any other warranties apply to the product?

Vestil Manufacturing Co. makes no other express warranties. All implied warranties are disclaimed to the extent allowed by law. Any implied warranty not disclaimed is limited in scope to the terms of this Limited Warranty. Vestil makes no warranty or representation that this product complies with any state or local design, performance, or safety code or standard. Noncompliance with any such code or standard is not a defect in material or workmanship.