

MonBlari



MonBlari is a high-end luxury bathroom brand originating from China. Founded in 2002, we have remained committed to an integrated strategy encompassing original design, intelligent manufacturing, and global marketing. Anchored by an 80,000m² smart industrial park, we have established a comprehensive bathroom portfolio spanning bathtubs, bathroom vanities, and shower enclosures.

Guided by a commitment to art-driven design and internationally recognised quality standards, MonBlari® creates refined bathroom experiences in which form, function and well-being come together in balance. Today, MonBlari is trusted by more than three million households worldwide and has become a quiet, enduring presence in homes that value both design and substance.

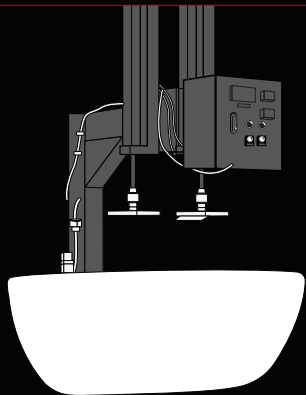


Manufacturing Excellence

80,000m² smart manufacturing complex
500+ Cross-Disciplinary Experts in R&D and Production
Exclusive IPMS Intelligent Production Management System
Certified by CE, cUPC, and SGS International Standards
Industry-Leading On-Time and High-Precision Delivery Rates
Strategic Partnerships with Top Global Brands



Triple-Core QC System

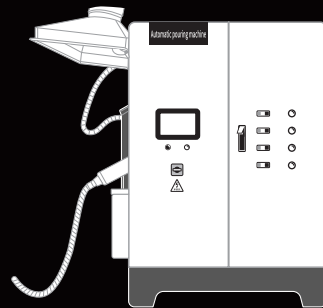


「 Special Condition Testing 」

Thermal cycling tests verify climate adaptability, while compression tests confirm structural strength and long-term durability.

「 Precision Ratio Control 」

Material ratios are precisely controlled to maintain consistent quality across different climate conditions.



「 End-to-End Quality Verification 」

Independent inspection checkpoints are built into every stage of production, with micron-level precision throughout the process.

Human-Centered

「Multi-layer temperature control」

Multi-layer composite structure minimizes heat loss.



「Ergonomic Innovation」

First-class seating – inspired design, tested 2,000+ times for optimal body support.



「Skin-Friendly Surface Finishing」

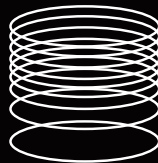
MonBlari remains committed to handcrafted finishing, giving each surface a satin-smooth texture that feels refined to the touch.





「 Product Digital Asset Library 」

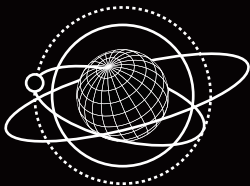
Built on 3,000+ digital bath models, with in-house mould development enabling 1,000+ product variations.



「 Boundary-Breaking Design Thinking 」

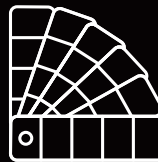
Inspired by both Eastern and Western cultures, bringing nature, craftsmanship, and fashion into bathroom spaces.

Design Philosophy



「 Leading Industry Trends 」

China's first adopter of full carbon-fibre bathroom solutions, driving material innovation.



「 Customization in Mass Production 」

Full Pantone color customization adaptable to different design styles.



We establish a closed-loop system spanning design, intelligent manufacturing, and quality control. Supported by more than 1,000 product series, this capability enables a broad, mature and dependable range of design solutions, ensuring every product becomes a refined expression of personal taste.

Full-Chain Technology Sovereignty

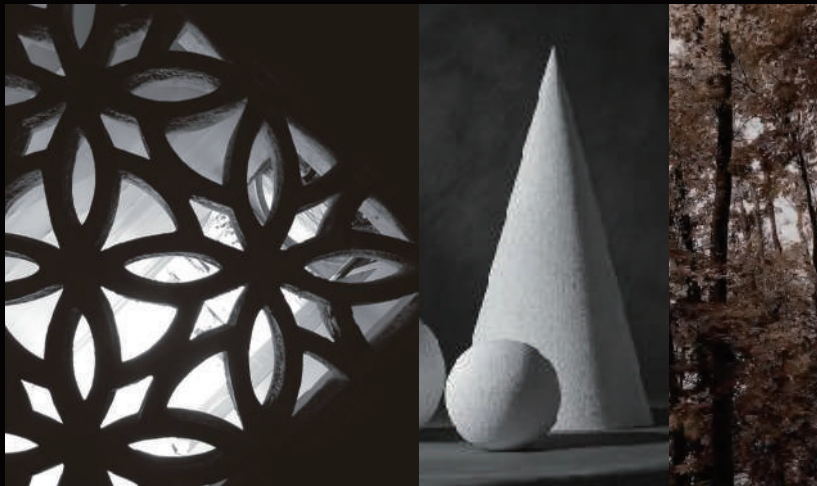
Originality

Collaborating with leading designers around the world, we connect Eastern and Western design sensibilities.

Inspired by nature, architecture and fashion, each creation is shaped as a functional work of art, designed to sit naturally within contemporary living spaces.

Globalized expression

Artistry



Cultural advocate

Humanism

Human Warmth Embedded in Every Design.

We foster a holistic bathing culture and continue to shape the future of modern bathroom design. Comfort and well-being remain at the heart of every decision we make, reflecting our long-standing commitment to a truly human-centred philosophy.

Explore More Products



MonBlari

User Manual

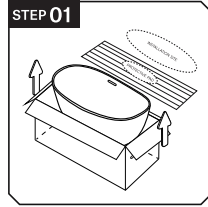
Important Notes

Before installation, please read the following guidelines carefully and comply with all relevant local regulations.

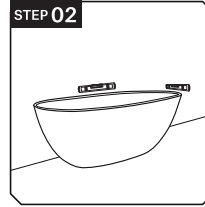
- Check the installation area to ensure it is flat and structurally stable.
- Unpack the product and check for any damage that may have occurred during transportation.
- Place the product on a flat, secure surface before installation.
- It is recommended that the product be installed by a qualified and licensed professional.
- As bathtubs are heavy and bulky, at least two people are required for installation. It is advised to use safetystraps and rubber gloves to prevent damage to the product.

Acrylic Bathtub

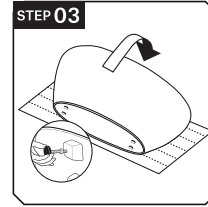
Installation Instructions



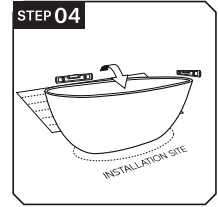
Take out the protective pad for the bathtub and lay it flat near the installation site.



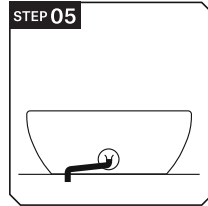
Take out the bathtub and place it upright at the installation site. Use a level tool to check whether the bathtub is even.



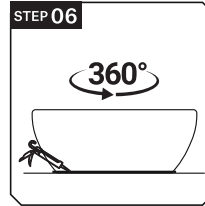
If the bathtub is not level, gently place it on its side on the protective pad and adjust the foot screws.



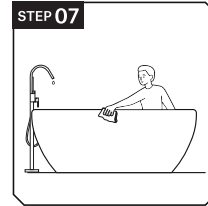
Turn the bathtub upright again and move it to the installation site. Use a level tool to finely adjust the foot screws until the bathtub is completely level.



Connect the bottom drainpipe.



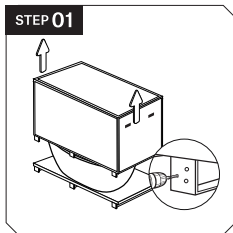
Evenly apply waterproof silicone along the bottom edge of the bathtub. Wait 24 hours to ensure the silicone is fully cured.



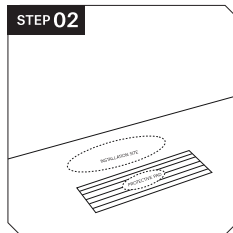
Clean the bathtub before normal use.

Solid Surface Bathtub

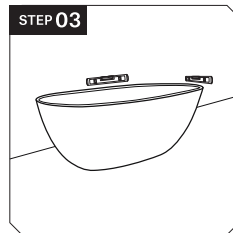
Installation Instructions



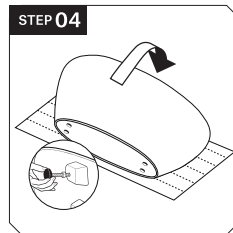
Use an electric drill to loosen the screws at the bottom of the package and lift the box vertically to remove it.



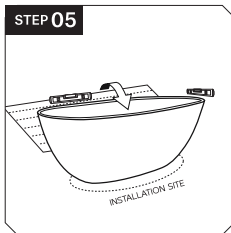
Take out the protective pad for the bathtub and lay it flat near the installation site.



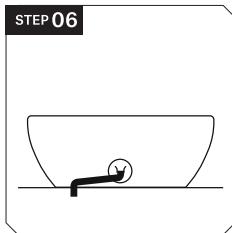
Take out the bathtub and place it upright at the installation site. Use a level tool to check whether the bathtub is even.



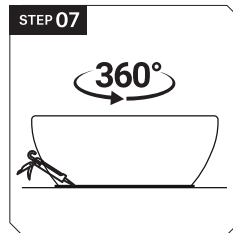
If the bathtub is not level, gently place it on its side on the protective pad and adjust the foot screws.



Turn the bathtub upright again and move it to the installation site. Use a level tool to finely adjust the foot screws until the bathtub is completely level.



Connect the bottom drainpipe.



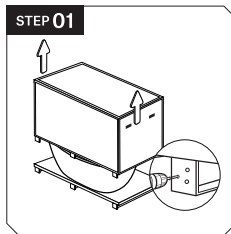
Evenly apply waterproof silicone along the bottom edge of the bathtub. Wait 24 hours to ensure the silicone is fully cured.



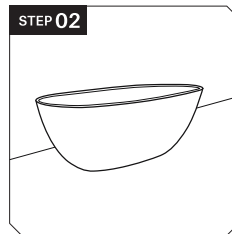
Clean the bathtub before normal use.

Resin Bathtub

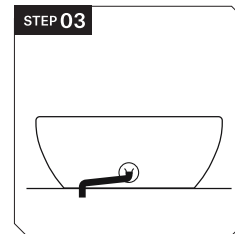
Installation Instructions



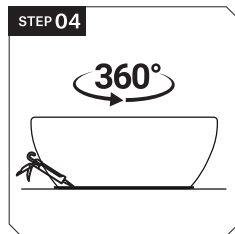
Use an electric drill to loosen the screws at the bottom of the package and lift the box vertically to remove it.



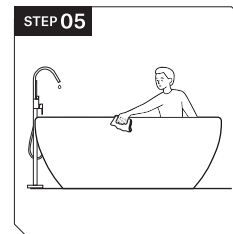
Take out the bathtub and place it upright at the installation site.



Connect the bottom drainpipe.



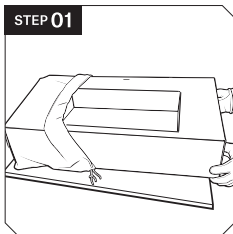
Evenly apply waterproof silicone along the bottom edge of the bathtub. Wait 24 hours to ensure the silicone is fully cured.



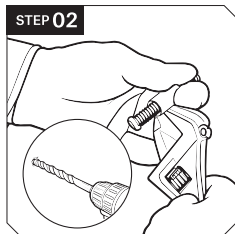
Clean the bathtub before normal use.

Wall-Mounted Sink

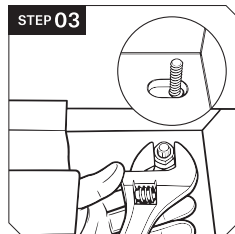
Installation Instructions



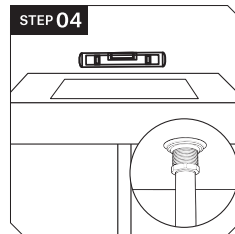
Unpack the product and accessories, and verify that all items are present and in good condition.



Mark and drill two level holes based on the installation dimensions. Insert the wall anchors until flush with the wall. Drive in the screws and tighten, ensuring the exposed length is as specified.



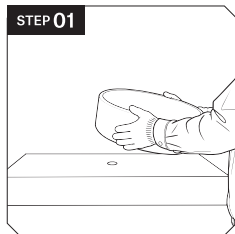
Mount the sink onto the screws until flush against the wall. Tighten the locking screws from underneath to secure.



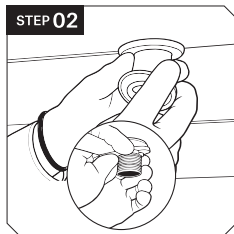
Level the unit with a spirit level. Install the drain assembly and pipe, ensuring all connections are secure and leak-free.

Vessel Sink

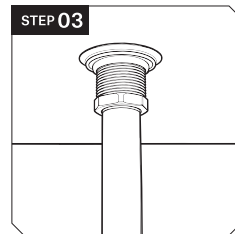
Installation Instructions



Place the sink on the countertop and align the drain hole with the opening.



Place the top and bottom gaskets, then tighten the drain mounting nut from underneath with wrench.



Connect the drain pipe to the bottom of the drain and tighten the coupling nut.



Clean the sink and surrounding area, and ensure all connections are secure and leak-free.

Safety Instructions

Attention!

When using the bathtub, always observe the following instructions:

1. Do not use electric heaters, lamps, telephones, televisions, or any electrical devices near the bathtub.
2. Create a safety zone when entering or exiting the bathtub, and exercise caution at all times.
3. Excessive water temperature may cause overheating or other health risks. Check and adjust the water temperature to your comfort.
4. Children or infirm must not use the bathtub without adult supervision.
5. If you are pregnant, please consult your doctor before using the bathtub.
6. Individuals with medical conditions or using medical devices should consult a doctor before use to avoid the risk of overheating or drowning.
7. Do not use the bathtub after consuming alcohol or taking any sedatives.

Precautions

1. Keep the bathtub dry when not in use. Standing water may cause residue buildup and shorten the product's lifespan.
2. Do not use abrasive cleaners.
3. Do not use acidic, alkaline, or strong ammonia-based cleaning agents.
4. Avoid contact with harsh chemicals such as nail polish, nail polish remover, or hair dye.
5. Do not use steel wool, scouring pads, or similar materials, as they may permanently scratch the surface.



Cleaning & Maintenance

1. Wipe gently with a soft cloth regularly for additional preventive cleaning.
2. For routine care, clean with warm water or mild soapy water, rinse immediately, and dry with a soft cloth.



Regular Disinfection

The bathtub should be disinfected before first use and after every 10 bathing sessions. Disinfection is also required after long periods of non-use.

1. Disinfection Procedure

- > Fill the bathtub with water.
- > Add a 0.5% quaternary ammonium disinfectant to the water in a 1:200 ratio.
- > Let the water sit for 5 minutes.
- > Drain the water and rinse the bathtub thoroughly.
- > Refill the bathtub with clean water.
- > Drain the water completely.

2. Precautions

- > Read the safety instructions of the quaternary ammonium disinfectant before use.
- > The disinfectant may irritate the skin — do not bathe during the disinfection process.
- > Ensure the room is well-ventilated during disinfection.

Cleaning Guidelines



Water Stains/Light Stains

All Products

1. Water stains could be wiped away with a damp cloth and dry immediately.
2. Most dirt and residue can be removed with soapy water or a mild detergent, and then drying with a soft cloth.
3. If residue remains, repeat Step 2.
4. If stains cannot be removed with soapy water or detergent, lightly sand the surface with fine sandpaper.



Scratches/Persistent Stains

Acrylic Products

1. Apply a small amount of toothpaste or acrylic polishing cream and gently wipe the product surface.
2. Wipe it dry with a soft cloth.

Cleaning Guidelines

Solid Surface Products

1. Use a wet sponge sanding pad to gently polish along the scratch until it is removed.

Resin Products

1. Use 3000-grit wet sandpaper to gently sand along the scratch until it is removed.
2. Apply a small amount of toothpaste or polishing wax and gently wipe the product surface.
3. Polish with a soft cloth until the surface shines.

Dear Customer,

Thank you very much for choosing us.
We believe you will enjoy the quality and craftsmanship of our products.

If you are satisfied with your purchase, we would greatly appreciate your positive feedback. Your satisfaction is our constant pursuit — and we welcome any suggestions that could help us improve your experience.

Thank you again for your purchase, and we wish you an enjoyable use experience.

MonBlari

Warranty Card

MonBlari provides this warning label to comply with the California Safe Drinking Water and Toxic Enforcement Act of 1986, commonly known as Proposition 65. The label is intended to inform consumers that this product may contain chemicals listed under Proposition 65. Under California law, many products sold in the state are required to carry this notice.

The presence of a Proposition 65-listed chemical does not mean that using this product will cause cancer, birth defects, or other reproductive harm, nor does it indicate that the product is unsafe. All MonBlari products meet or exceed applicable industry standards for performance and safety. We are confident that the proper installation and use of MonBlari products do not pose a health risk.



California Proposition 65 Warning

WARNING: This product can expose you to chemicals known to the State of California to cause cancer and birth defects or other reproductive harm.

**WASH HANDS AFTER INSTALLING OR
REMOVING THIS PRODUCT.**

Important Notes

The included drain assembly and drain pipe are provided as installation accessories for this bathtub only. Local plumbing codes may vary. Professional installation is recommended.

MonBlari

Instagram:



Email:

info@monblari.com