

**Smart Lock**  
Model No.A035

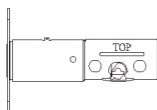
## Table of contents

- <1> What is inside
- <2> Installation guide
- <11> Product parameter
- <12> Panel introduction
- <12> Factory setting
- <12> Instructions for use
- <12> Menu option
- <16> Low power alarm
- <16> Multiple input error alarms
- <17> Lock/unlock fault alarm
- <17> Factory reset
- <18> Emergency Power
- <18> Emergency unlocking

# Installation Guide

## What is inside

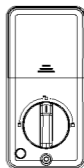
**A.Latch**



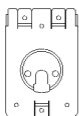
**B.Keypad**



**C.Interior Assembly**



**D.Mounting Plate**



**E.Strike**



**F.Strike Box**



**G.Mounting Plate  
Screws**



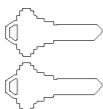
**H.Interior Assembly  
Screws**



**I.Latch / Strike  
Screws**

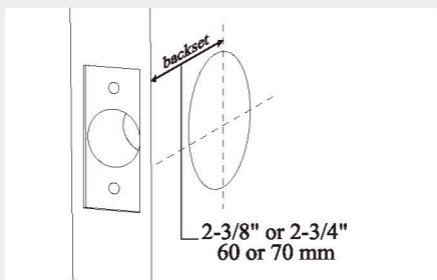


**J.Keys**



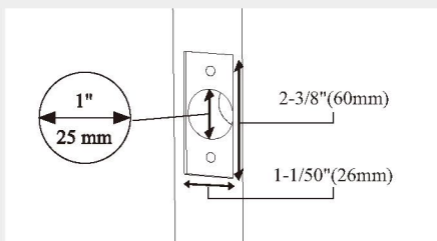
# 1 Prepare the door and check dimensions

- A** Measure to confirm that the backset is either 2-3/8" or 2-3/4" (60 or 70mm).

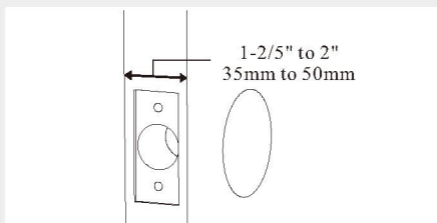


- B** Measure the size of the square slot is 2-3/8" x 1-1/50" (60x26mm).

Measure to confirm that the hole in the door edge is 1" (25mm).

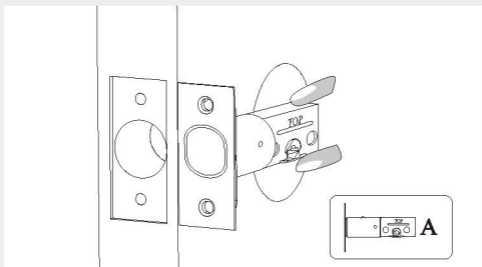


- C** Measure to confirm that the door is 1-2/5" to 2" (35mm to 50mm) thick.



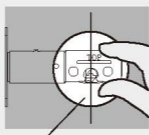
## 2 Install the latch and strike

- A** Hold the latch in front of the door hole, with the latch face flush against the door edge.



Is the slotted hole centered in the door hole?

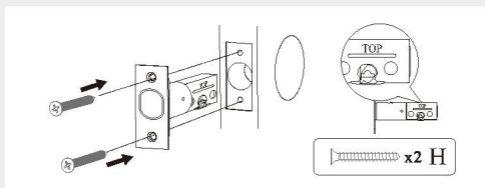
**YES**



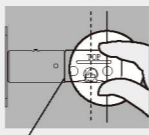
Slotted hole is centered.



No adjustment is required. Proceed to next step.



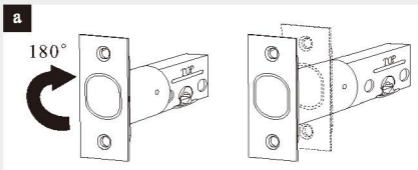
**NO**



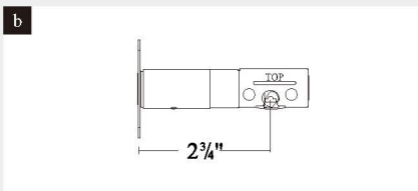
Slotted hole is not centered.



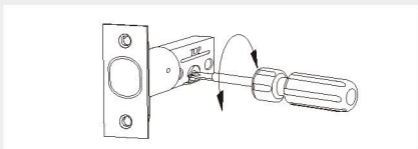
Rotate and pull the latch as shown to extend latch.



Rotate the head of latch 180°

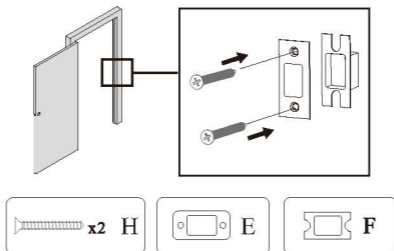


- B** Use a screwdriver to test if deadbolt works smoothly. When the screwdriver turn, the deadbolt would be lock/unlock.




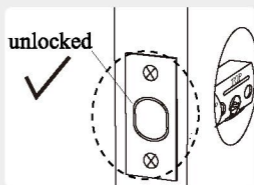
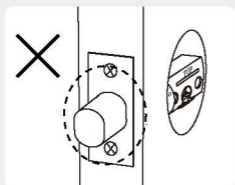
- C** Install strike on the door frame.

**⚠ IMPORTANT:** Make sure hole in door frame is drilled a minimum of 1" (25 mm) deep.



### 3 Installation instructions

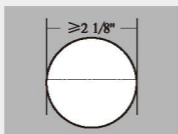
- A**  **IMPORTANT:** Before installation, make sure the latch is fully retracted (in the unlocked position) .



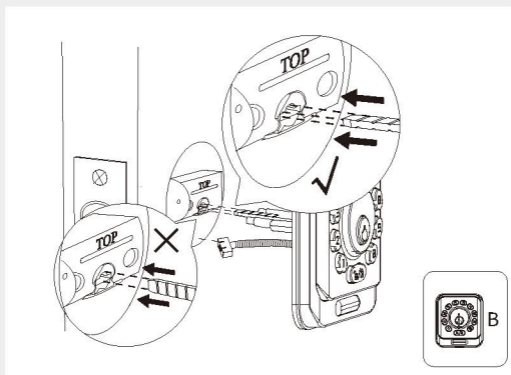
### **B** Install Keypad


If the hole is bigger than 2 1/8" (54mm), install the keypad directly

YES

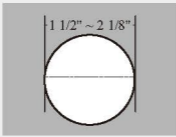


No adjustment is required. Proceed to next step.



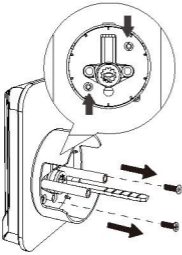
Please ensure the tail bar is Horizontal  during installation. The IC wired need to under the deadbolt.

NO



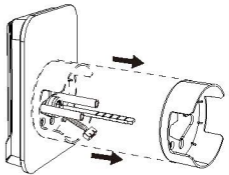
Remove the hole cover

a



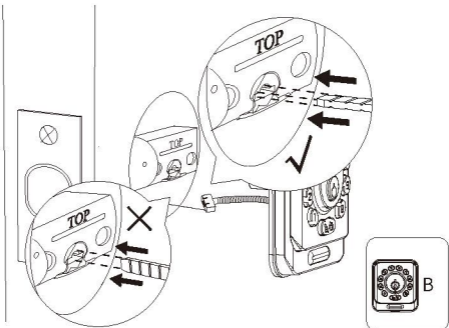
Remove screw from hole cover


b



Remove the hole cover

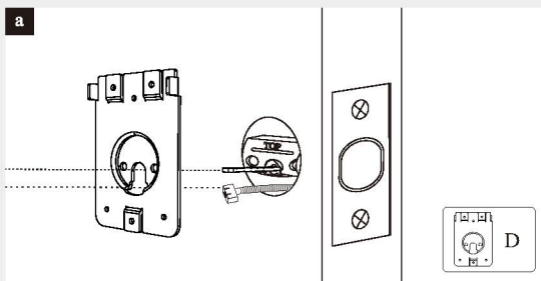
c



Please ensure the tail bar is Horizontal  during installation. The IC wired need to under the deadbolt.

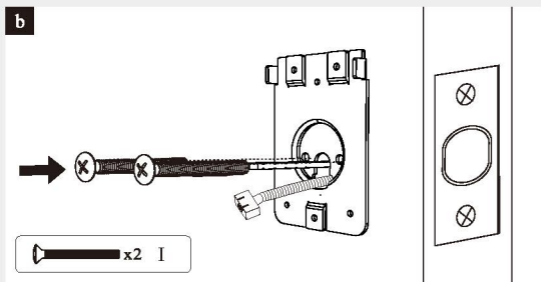
## C Install Mounting Plate

a



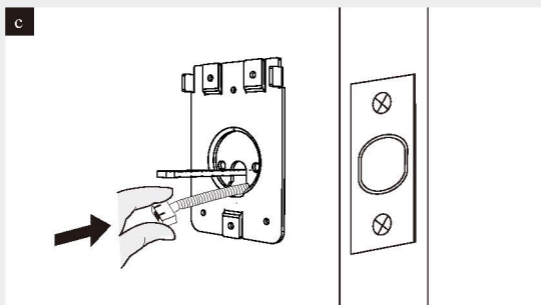
The IC wired and tail bar go through the hole of mounting plate

b



Secure the mounting plate with the supplied screws.

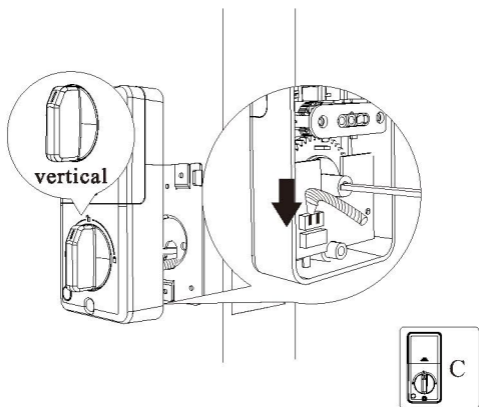
c



Make sure the IC wired not too long.

## D Install Interior Assembly

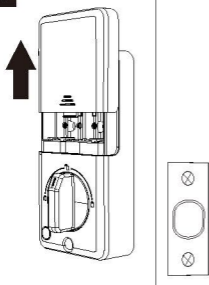
a



Connect the cable and ensure tight cable connection. And the tail bar insert the turnpiece hole.

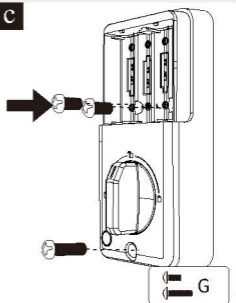
Note: The rear knob is in a vertical state.

b



Remove the battery cover

c



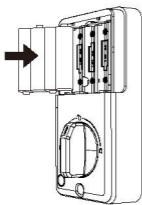
Secure the interior assembly with the supplied screws.

## E Self-learning detection left and right hand door



This step is necessary and essential for the lock to function properly.

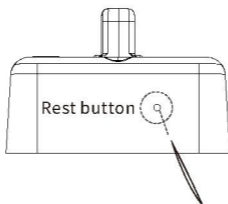
a



Unlocked

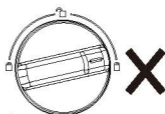
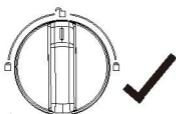
Install 4 AA batteries when the lock is unlocked. (For best results, use brand new batteries)

b



Press and hold the reset button at the bottom of the inner assembly with a sharp object.

c




The lock executes the self-learning program. At this time, the rear knob cannot be touched by hand until the learning is over.

d

The green light  
blinks two times



 The buzzer "Di" 2 times


After the initialization is complete, the lock executes the self-learning program. At this time, the lock cannot be touched by hand until the learning is over. After learning the direction of the driving mechanism successfully, the green light blinks 2 times and the buzzer "drops" 2 times.

---

The red light blinks ten times



When learning fails, the buzzer "drops" ten times and the red light blinks ten times. If the self-learning fails, the door lock cannot be opened or closed. Please re-learn the self-learning.

 The buzzer "Di" 10 times

If repeated learning is unsuccessful, please check:

1. Take off the rear panel of the door lock and turn the knob to see if it can rotate 180 degrees smoothly.
2. Install the back panel and turn the knob to see if the lock tongue can be smoothly driven out and retracted.

# Product parameter

## A Basic parameter


| Category                            | Detailed technical parameters                | Remarks  |
|-------------------------------------|--|--|
| Administrator password capacity     | 1 Group administrator password               | The initial management password is 123456  |
| Common user password capacity       | 100 groups                                   | Password length: 6 to 8 characters   |
| Operating voltage                   | 4.5V - 6.6 V                                 | 4 dry batteries, standard voltage 6V   |
| Password keyboard                   | Silicone button                              |  |
| Number of keys                      | 11 buttons                                   | 0-9, key  |
| Digital key backlight               | White backlight                              |  |
| System operation indicator          | Red and green light                          |  |
| Sound cue                           | Buzzer sound cue                             |  |
| Motor position detection            | 2 set Optocoupler switches/<br>Hall switches |  |
| Rear handle knob position detection | One set hall switch                          |  |

## B Working environment parameter


| Category              | Detailed technical parameters |
|-----------------------|-------------------------------|
| Operating temperature | -25°C ~ +70°C                 |
| Working humidity      | 5~95%RH(No condensation)      |

## Panel introduction



The panel consists of 11 buttons (0 ~ 9, ) .

### Function preview

|       |                   |   |                 |                     |                      |
|-------|-------------------|---|-----------------|---------------------|----------------------|
| Key 1 | Add password      | Key 2   | Change password | Key 3               | Delete password      |
| Key 4 | Automatic locking | Key 5   | Quiet mode      | Key 6               | Master mode          |
| Key 7 | One time password | Key 8   | None            | Key 9               | Automatic correction |
| Key 0 | System reset      | Key  |                 | Lock/Unlock/confirm |                      |

## Factory setting

### Initial administrative password



The password can contain 6 to 8 digits.

## Instructions for use

### lock from outdoor



Long press the home key to lock the tongue.

## Lock from indoor

### Method 1

Turn the knob on the rear panel to lock



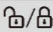
### Method 2

In the unlocked state, press the key in the lower left corner of the rear panel to realize one-button locking



## Unlock from outdoor

### Password unlock

XXX Administrator, user password XXX + 

Virtual password

**Virtual password:** You can add irrelevant codes before and after the password and press the Confirm key (the password contains a maximum of 40 characters).



**Note** If you enter incorrect passwords for more than five consecutive times, the keyboard will be locked for one minute. The system does not respond to any operation within one minute. The keyboard will be unlocked automatically after one minute.

## Unlock from indoor

### Method 1

Turn the knob on the rear panel to unlock



### Method 2

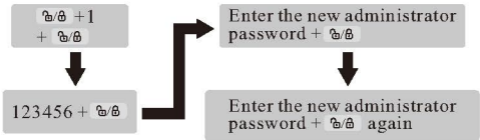
In the lock state, press the key at the lower left corner of the rear panel to unlock the lock with one click



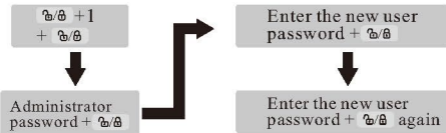
# Menu option

## A Add a user

### a Add an administrator (factory default)

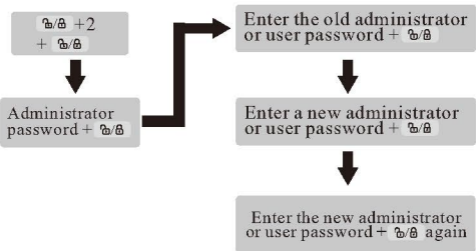


### b Adding a Common Password User (after adding an administrator)



## B Change operation

### a Change the administrator password or user password



## C Delete operation

### a Example Delete a single user password

№/№ +3+ №/№



Administrator password + №/№



Enter the deleted password + №/№ that has been registered

### b Delete all users (except administrators)

№/№ +3+ №/№



Administrator password + №/№



Input 00000 + №/№

## D Automatic locking

№/№ +4+ №/№



Administrator password + №/№

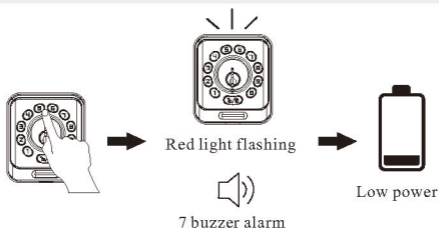


Enter the interval + №/№ between unlocking and locking

The interval is a two-digit number: from 05 seconds to 30 seconds. If the interval is set to 00, the automatic locking function will be canceled (this function is disabled by default).

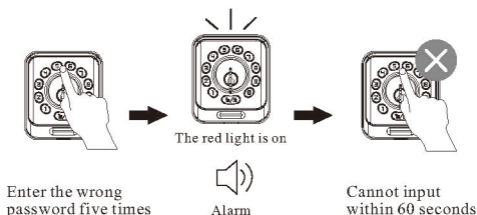
After opening the second function, the door is opened with a password outside the door. The rear door lock is automatically locked when the interval is up.

## Low power alarm



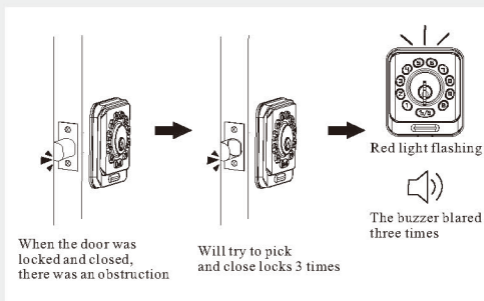
When the system starts and finds that the battery power is low, the buzzer will sound 7 times and the red light will blink. Please replace the battery as soon as possible.

## Multiple input error alarms



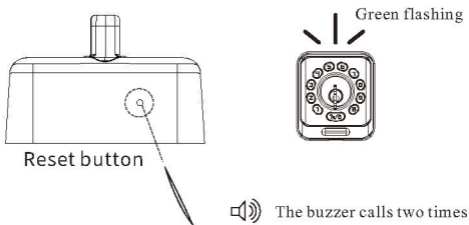
5 incorrect password input, alarm sound and red light, the keyboard can not be entered within 60 seconds.

## Lock/unlock fault alarm



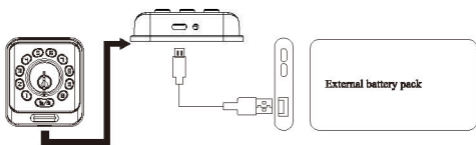
When the lock is closed, it will try to unlock and close the lock 3 times. If the three attempts are still unsuccessful, the system will beep three times and the red light will blink. Check whether the door lock driving mechanism is stuck or the door lock fails to work properly due to other reasons.

## Factory Reset



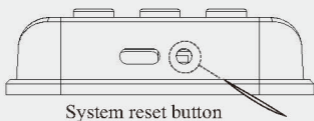
There is a reset button at the bottom of the rear panel of the door lock, and the system is initialized when a sharp object is continuously pressed against the switch.

## Emergency Power



If the lock is low power and unable to operate, there is a micro USB power socket at the bottom of lock for power supply.

## System Reset



Once the lock freezes and cannot be unlocked, please use a sharp object to press the system restart button to restart the system.