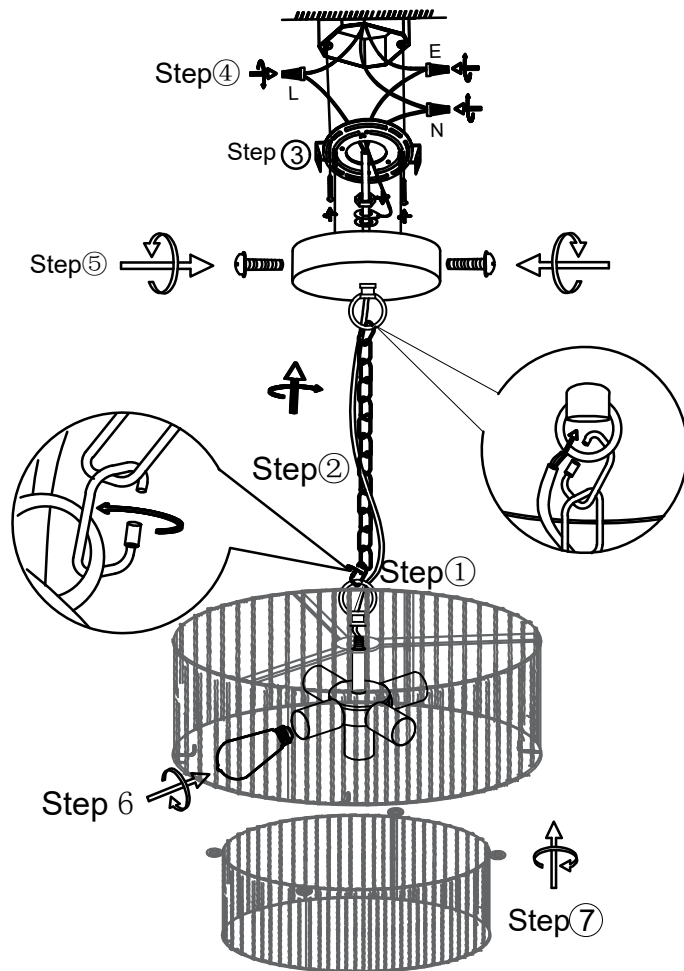
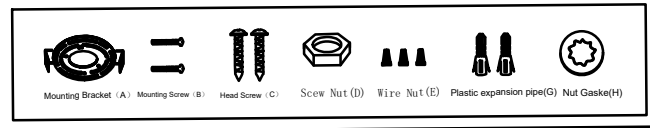


Hardware Package (included) :



ASSEMBLY AND INSTALLATION INSTRUCTIONS

WARNING: TO AVOID RISK OF ELECTRICAL SHOCK, BE SURE TO SHUT OFF POWER BEFORE INSTALLING OR SERVICING THIS FIXTURE.

Before installing, consult local electrical codes for wiring and grounding requirements,

2. READ AND SAVE THESE INSTRUCTIONS.

Installation Steps

Turn off the power at fuse or circuit box

Assembly of the fixture body

Check if all the accessories are included.

Installation Instructions

Step 01. Thread the power cord through a large lampshade and secure it with a suspension ring.

Step :02. Install the chain.

Step :03. Assemble the mounting bracket to the wall using expansion screw tubes and screws.

Step 04. Connect the lamp wire to the power supply using the connection terminal.

Step :05. Secure the top cover with screws.

Step :06. Install lampshades and bulbs (not included).

Step :07. Install a small lamp shade.

Attention

1. Please install it by a licensed electrician.

2. Due to the different display, the actual color can be different from the image.

3. Due to the manual measurement of lamp body size, there may be a deviation of 1/2 inch

4. If there any quality problem, missing parts or other something wrong of the item, please feel free to contact us and we will try our best to help you.