



## INSTALLATION TO THE WALL

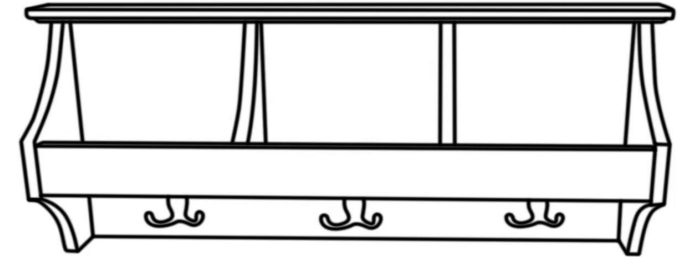
### PREPARATION

- \*Before beginning assembly of product, make sure all parts are present.
- \*If any part is missing or damaged, do not attempt to assemble the product.
- \*Estimated Assembly Time: 5 minutes.

### Hardware List

PIECE	DESCRIPTION	PICTURE	QUANTITY
A	Screw 8 x 38mm		2PCS
B	Plastic Screw Anchor		2PCS

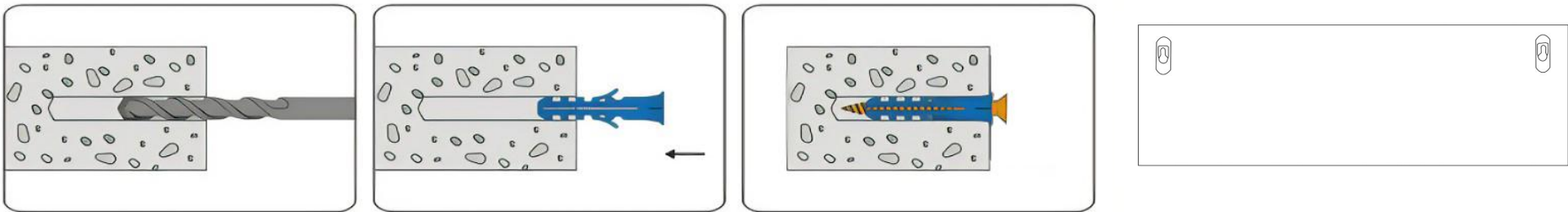
Product Dimensions: 28"W x 5.1"D x 11.8"H



⚠ WARNING ⚠

Weight Capacity:40LBS

### Assembly Steps:



Step 1: Prepare a drill machine and mark the positions on the wall where the assembly product is to be installed. Drill two holes in the wall, ensuring that the hole sizes are identical to the diameter of the provided plastic screw anchor. Ensure that the spacing between the two holes corresponds to the spacing between the hooks on the back of the wall-mounted product.

Step 2: Place the two plastic screw anchors into the pre-drilled holes. Using the hammer, gently tap on the head of each expansion screw to ensure they are securely seated within the holes.

Step 3: Insert two screws into the pre-installed plastic screw anchors. Using the screwdriver, turn the screws clockwise to lock them into the expansion screws and firmly secure the wall-mounted product to the wall.

Step 4: The wall shelf comes with 2 metal hooks on the back, as shown in the attached image. These hooks allow the shelves to be directly mounted onto the wall where the hardware has been installed.