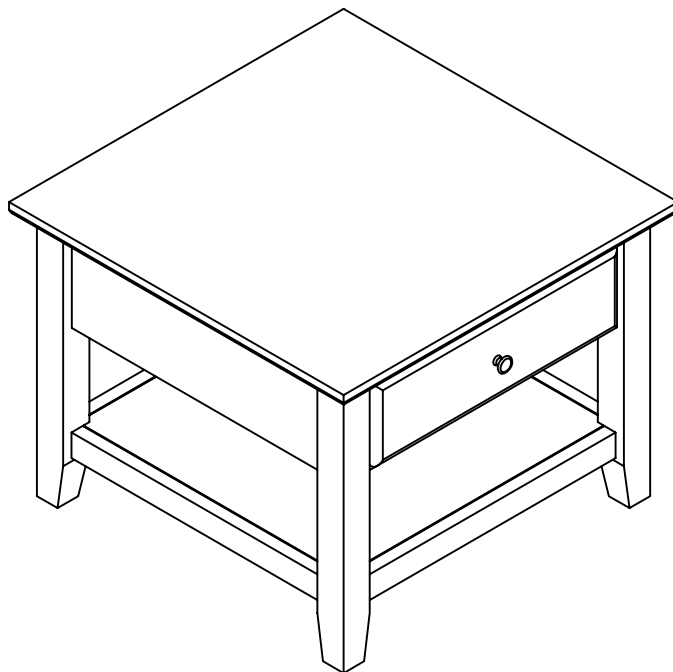


ASSEMBLY INSTRUCTIONS

END TABLE

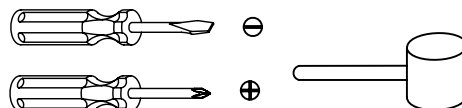


ASSEMBLY REQUIREMENTS

75 MINUTES
Assembly Time
(Approximate)

2-Person
Assembly

Tools Required:
Not Provided



Thank you for purchasing our product!

Please refer and use this assembly instructions to assemble the product

Contact our customer service department in case there are any missing or damage parts or hardware.

We appreciate your business!

ASSEMBLY INSTRUCTIONS

END TABLE

ASSEMBLY PREPARATION:

1. Remove all packaging materials, staples and packing straps from the carton.
2. Refer to Parts List and Hardware List and ensure they are complete before you start assembling.
3. Place all wooden parts on a clean, flat and soft surface (e. g. carpet or rug) to prevent parts from getting scratched.

SAFETY PRECAUTION:

1. KEEP ALL HARDWARE PARTS OUT OF REACH OF CHILDREN.
2. DISPOSE PLASTIC PACKAGING MATERIAL IMMEDIATELY TO AVOID ANY RISK OF SUFFOCATION TO CHILDREN AND ANIMALS.

TIPS FOR ASSEMBLY:

1. Allow ample room for assemble and in close proximity to where product will be placed.
2. Assemble the product on a surface that does not scratch or damage the exterior gloss and finish of the furniture.
3. Please check all of the parts and quantities are included before assembly. Contact customer service for missing parts.
4. Identify all of the parts, hardware and quantities required for each step.
5. During assembly, do not over-tighten any fittings as this may cause damage.
6. DO NOT USE POWER TOOLS TO ASSMEBLE THIS PRODUCT.
7. Always place the product on a flat, stable surface.
8. Do not sit or stand on the partially assembled product; only use the product for which it is intended.
9. This product is made of reinforced hollow board. Excessive pressure can cause irreparable damage. Avoid standing or kneeling on any parts of the product during assembly.

CARE AND MAINTENANCE:

- Use a slightly damp cloth to the product. Do not use bleach or abrasive cleaning material
- Check all the fittings periodically and re-tighten as necessary. Do not use the product if any of the parts is damaged or broken.
- Never allow any kind of liquid to remain on your furniture. Absorption can cause wood to warp or delaminate.
- Do not place hot items(e. g. hot drinks)directly onto the wood surface.
- Do not drag and pull your furniture.

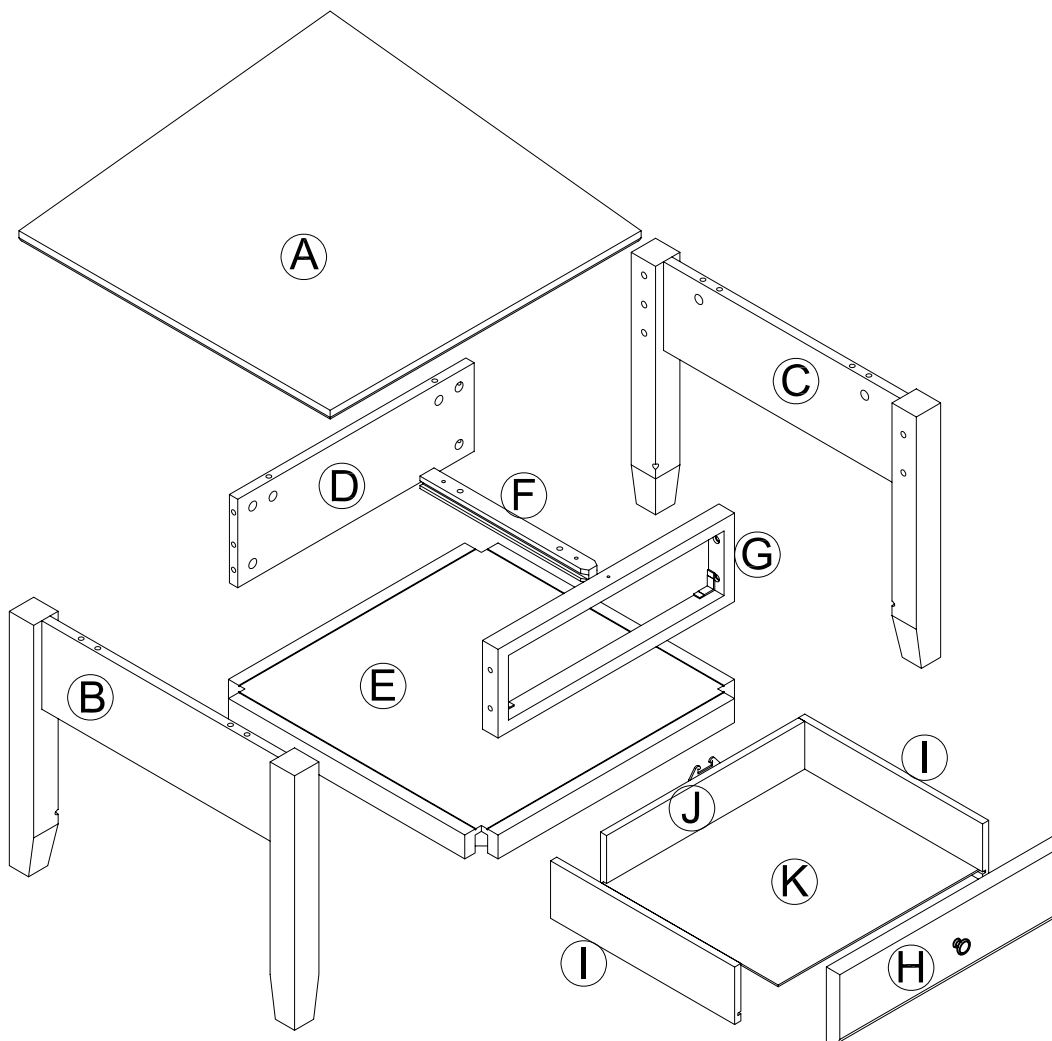
This product is for indoor and household use only - not for commercial or industrial use.

ASSEMBLY INSTRUCTIONS

END TABLE

PARTS LIST AND ASSEMBLY OVERVIEW

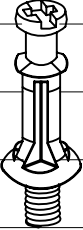


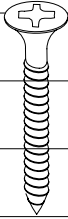

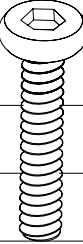
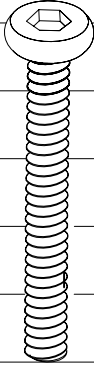
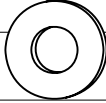

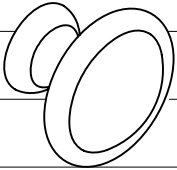
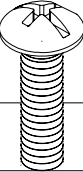


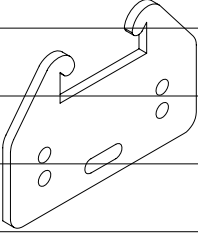
NO. PART LIST	QTY	NO. PART LIST	QTY
(A) Top Panel	1	(G) Front Frame	1
(B) Left Side Panel	1	(H) Drawer Front Panel	1
(C) Right Side Panel	1	(I) Drawer Side Panel	2
(D) Back Panel	1	(J) Drawer Back Panel	1
(E) Bottom Panel	1	(K) Drawer Bottom Panel	1
(F) Slide Rail	1		



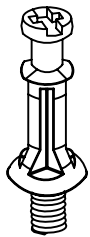
ASSEMBLY INSTRUCTIONS

END TABLE

HARDWARE LIST

					3CM 2CM 1CM 0CM
10X ø6*35mm 1 Cam -- bolt	8X ø8*30mm 2 Wood Dowel	10X ø15*12mm 3 Cam-lock	2X ø4*35mm 4 Screw	8X ø3*30mm 5 Screw	
					5CM 4CM 3CM 2CM 1CM 0CM
5X ø6*38mm 6 Bolt	4X ø6*57mm 7 Bolt	4X ø6mm 8 Flat Washer	4X ø6mm 9 Spring Washer	1X 10 Knob	
					4CM 3CM 2CM 1CM 0CM
1X ø4*25mm 11 Round Head Bolt	1X ø4mm 12 Allen Wrench	3X ø3*12mm 13 Screw	1X L60*41mm 14 Drawer Hanger		

Instructions For Fastening CAM-BOLT and CAM-LOCK



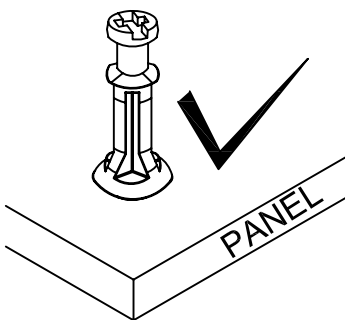
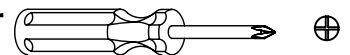
CAM-BOLT



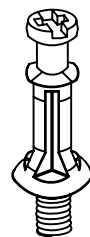
CAM-LOCK

CAM-BOLT

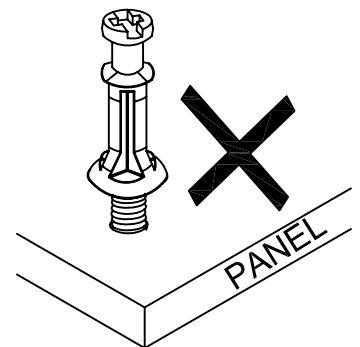
Insert Cam-bolt into the pre-drilled hle.use a Phillips Screwdriver to tighten until shoulder is sung and flushed with the panel.see illustrations below



Shoulder is flushed(on the same level)with the panel.



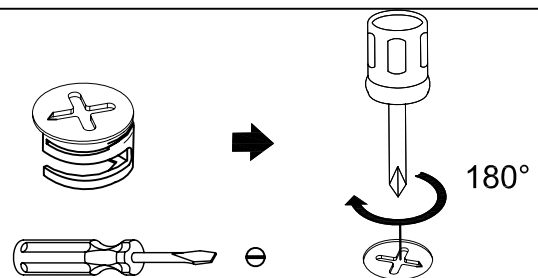
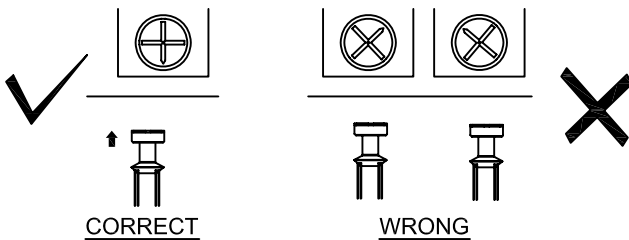
Shoulder



Shoulder is above the panel

CAM-BOLT

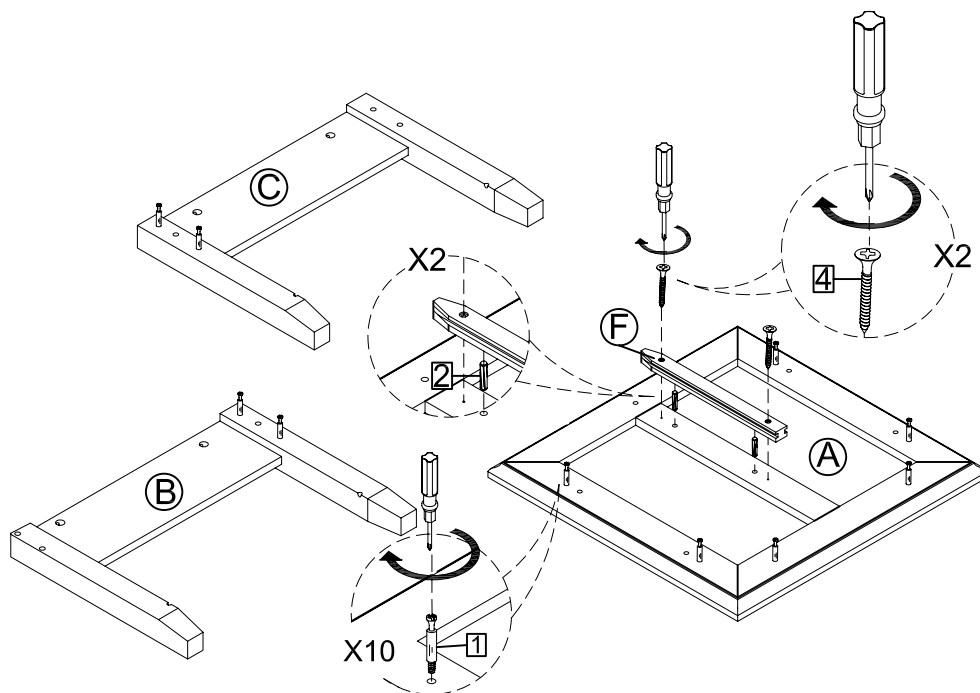
Align the arrow of the Cam-lock to the Cam-bolt head and insert the Cam-lock.



Use a Flat-head Screwdriver to turn the Cam-lock colokwise one half a turn so it lock onto the head of the Cam-lock.Turn only until it is snug -- over-tightening could damage Cam-lock or/and Cam-bolt

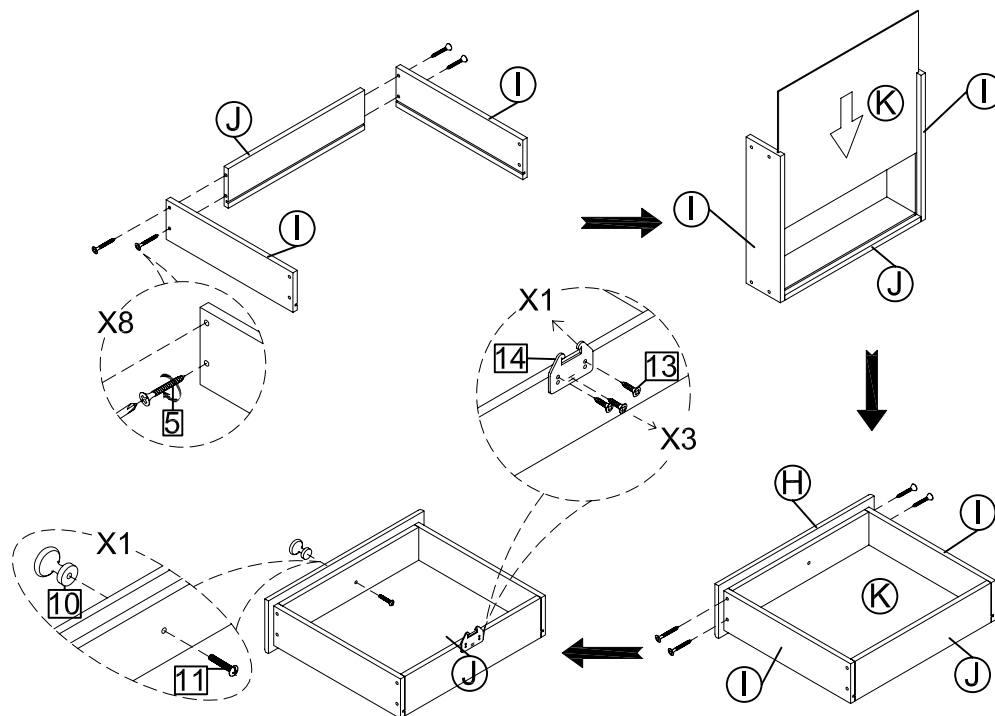
ASSEMBLY INSTRUCTIONS END TABLE

STEP 1



- Insert and tighten Cam-bolt (1) to Left & Right Side Panel (B & C) as shown.
- Place Top Panel (A) bottom-side up. Insert Cam-bolt (1) into the designated holes and tighten.
- Insert Wood Dowel (2) into (A) as shown and affix Slide Rail (F) using Screw (4)

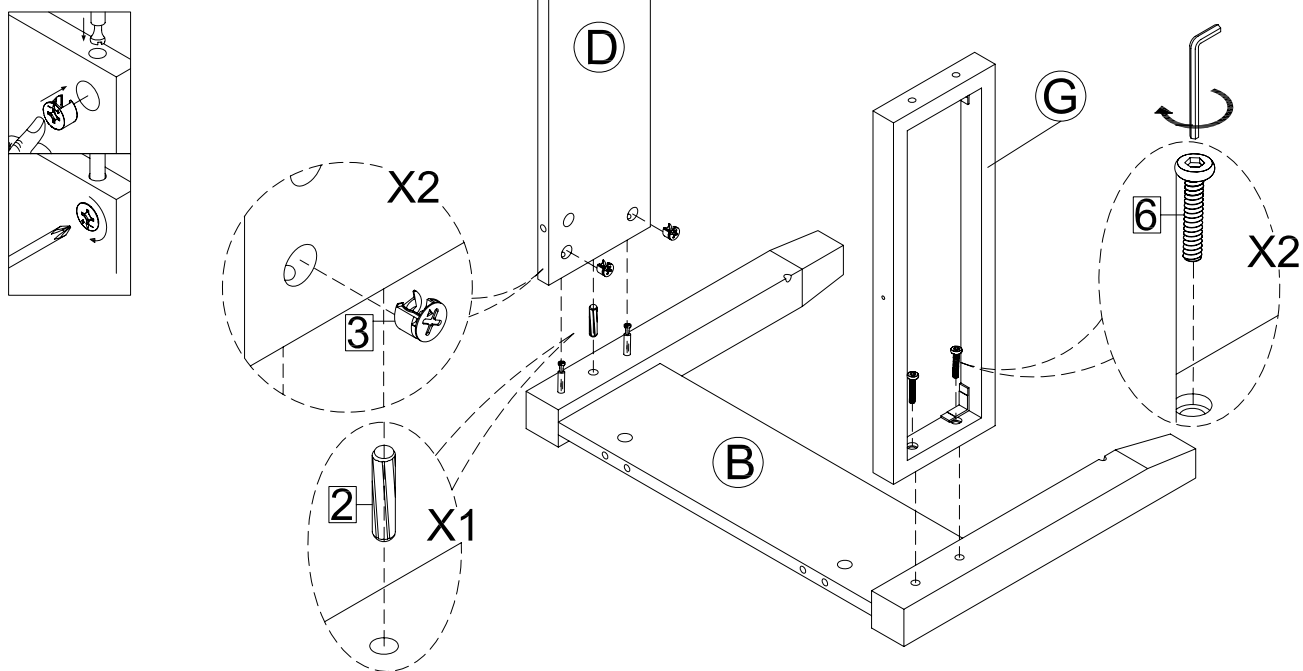
STEP 2



- Attach Drawer Side Panels (I) to Drawer Back Panel (J) by using Screw (5).
- Insert Drawer Bottom Panel (K) via groove on Drawer Side Panels and Back Panel
- Place Drawer Front Panel (H) between (I) and use Screw (5) to fasten (H) as shown
- Identify position for Drawer Hanging Piece (14) on (J) and use Screw (13) to attach it.
- Install Knob (10) using Screw (11)

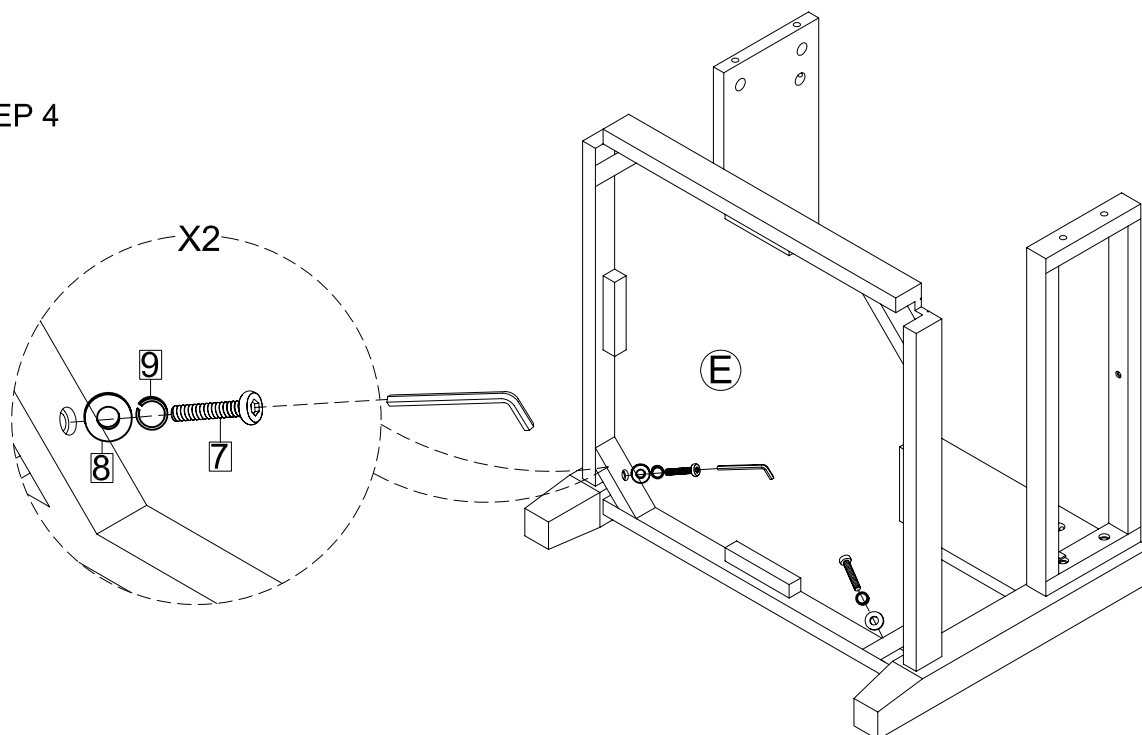
ASSEMBLY INSTRUCTIONS END TABLE

STEP 3



- a) Position Left Side Panel (B) with Cam-bolt (from Setp 1) as shown. Insert wood Dowel (2)
- b) Attach Back Panel (D) to (B). Insert Cam-lock (3) and turn clockwise to secure Cam-bolt on (B)
- c) Attach Front Frame (G) to (B) and fasten with Bolt (6) using Allen Wrench (12) as shown.

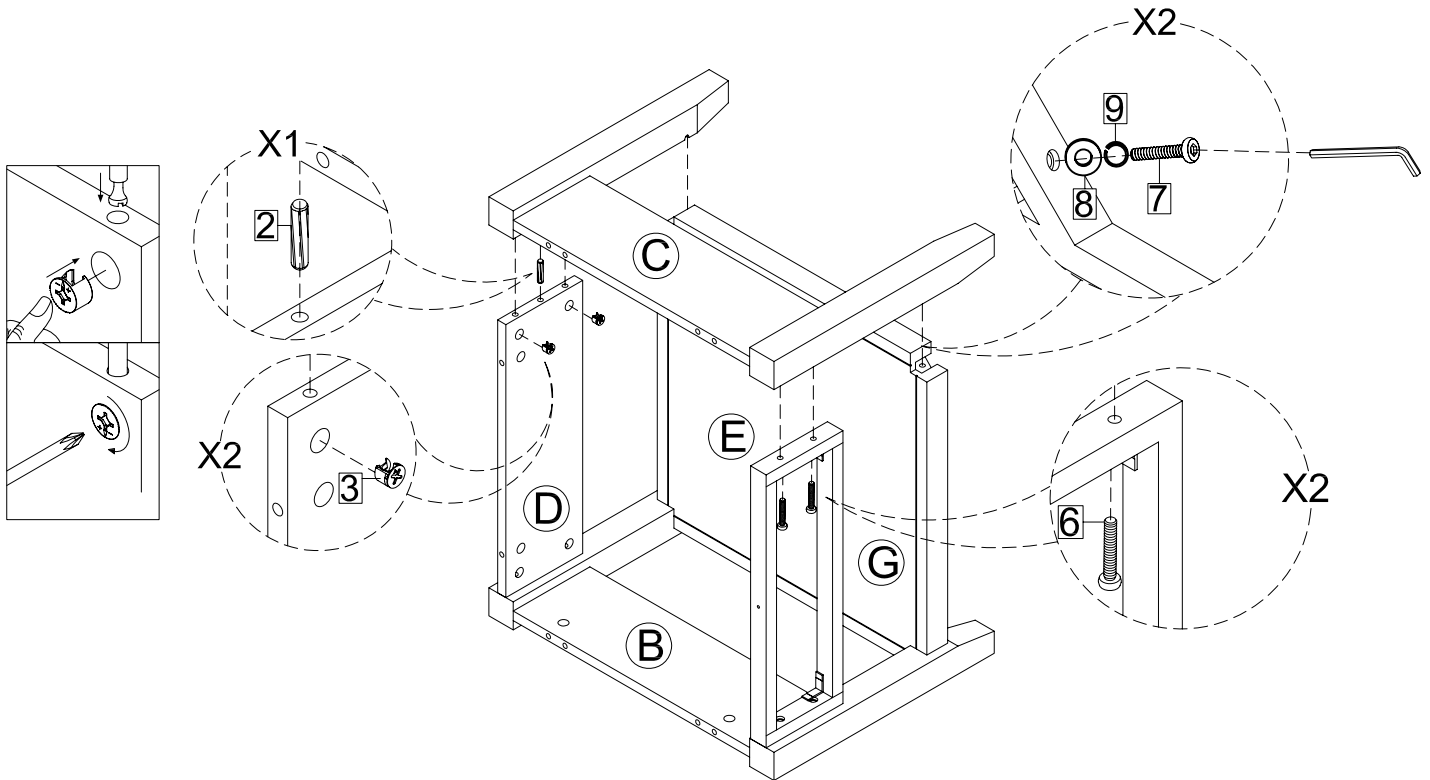
STEP 4



- a) Place Bottom Panel (E) on Left Side Panel (B) as shown.
- b) Use Bolt (7) inserted with Spring Washer (9) and Flat Washer (8) to fasten Bottom Panel (E) on Left Side Panel (B). Use Allen Wrench (12) to loosely tighten Bolt (7) at this time.

ASSEMBLY INSTRUCTIONS END TABLE

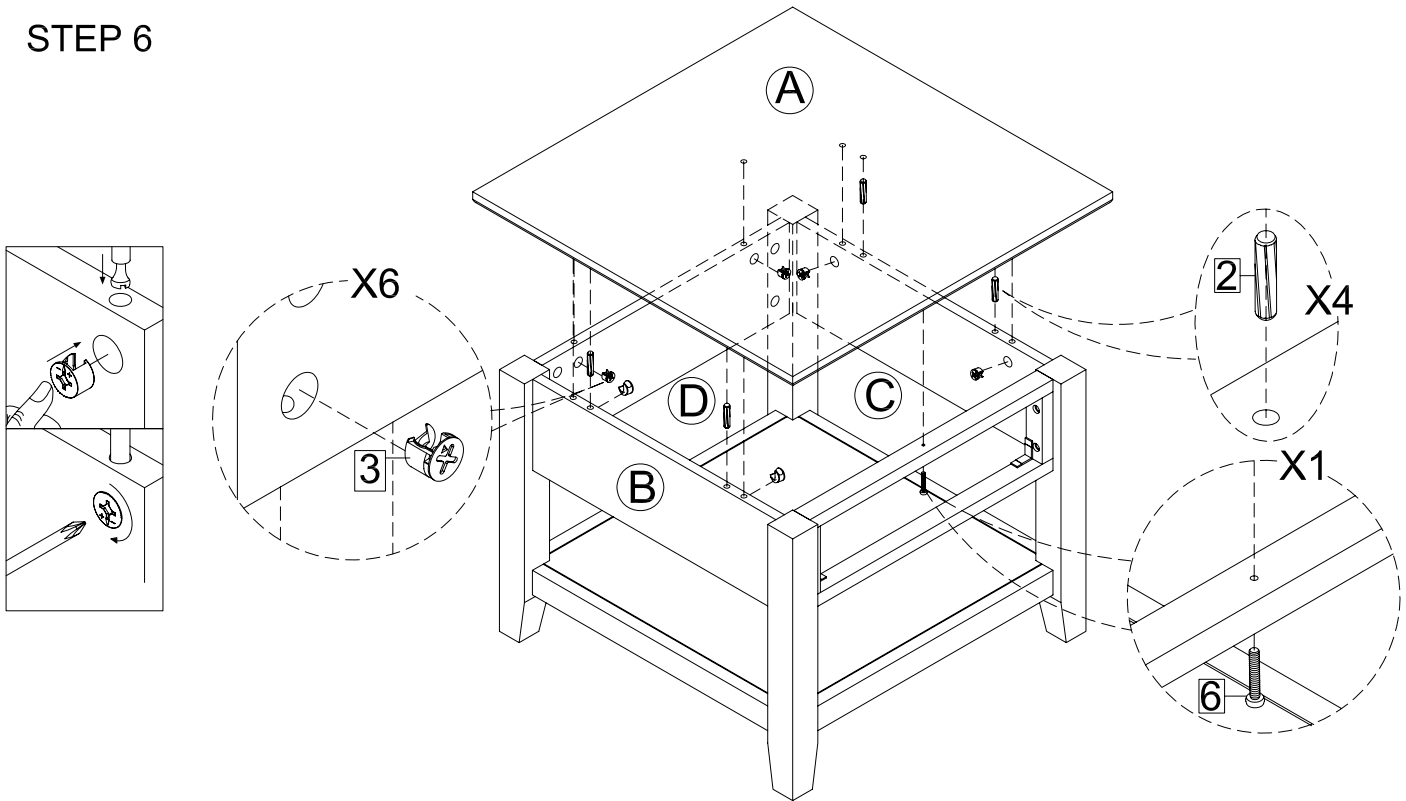
STEP 5



- a) Insert Wood Dowel (2) on Back Panel (D). Attach Right Side Panel (C) with Cam-bolt (from Step1) to Back Panel (D),Front Frame (G) and Bottom Panel (E) as shown.
- b) On (D), insert Cam-lock (3) and turn clockwise to secure Cam-bolt on (C)
- c) Fasten (C) to Front Frame (G) with Bolt (6) using Allen Wrench (12) as shown
- d) Use Bolt (7) inserted with Spring Washer (9) and Flat Washer (8) to fasten (C) to (E).Use Allen Wrench (12) to tighten Bolt (7) and every Bolt (7) on (E) completely at this time. Do not over-tighten.

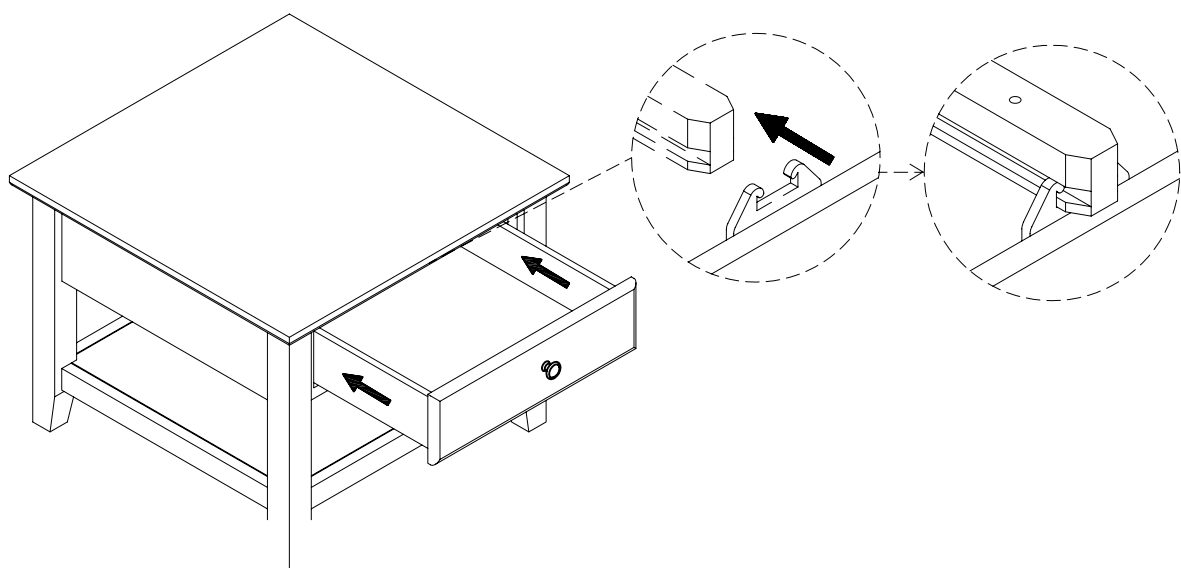
ASSEMBLY INSTRUCTIONS END TABLE

STEP 6



- a) Insert Wood Dowel (2) on Side Panel (B & C) as shown.
- b) Attach Top Panel (A) from Step 1, insert Cam-lock (3) and turn clockwise on (B), (C) & (D) to secure Cam-bolt on (A). Use Bolt (6) to fasten Top Panel to Front Frame.

STEP 7



Insert completed Drawer assembly squarely to allow the Drawer Hanging piece (14) on Drawer Back Panel to slide into the Slide Rail under the Top Panel