



**COLAMO**

**CREATE THE PERSONALIZED SPACE !**

## **General notes and information**

When purchasing, please use the application instruction to check whether the product is suitable for the intended purpose.

In the event of unsuitable installation, we cannot be held liable for complaints. Use products & material suitable for the product installation, grouting, protection, and cleaning. Misplaced goods are excluded from the complaint and resulting follow-up/laying costs are not accepted.

Slight fluctuations are possible due to material and production. Before you start laying, always check the quality and product for color deviation, dimensional deviation, discoloration, and damage. We cannot be held liable for complaints of used products.

Please note that natural stone or seashell product is a natural product with natural coloring and small depressions, ore inclusions and water veins. Material shards are possible with drummed natural stone or seashell products.

Please note that natural wood is a natural product with veins & scar. For painted color, slight color variation will be possible due to different absorption of position for natural wood within same or different products batch.

In principle, read all the instructions for the manufacturer materials used before each step.

**Facebook:Colamo US/Instagram:colamo US**

# 1. Laying

The substrate must be firm, smooth, flat, durable, dry and dust-free. (products can install on old tiles) Keep the surface clean throughout the laying process Choose a suitable starting point (Always start with whole product mats and add pieces to the end.), It is helpful to draw lines on the surface to be laid, thus facilitating the correct positioning of the product mats.

Taking into account the dimensions of the product stone and the product mat, as well as the visual appearance. Pay attention to the distance between the mats while the joint width of the product stones should also be maintained between the product mats.

Note the product thickness and mat shape when laying the product together with other materials. It is advantageous to lay the product mats on the floor in advance or to stop them on the wall.

Remove the product mat from the single packaging/carton. Always lay the product mixed from several cartons.

## Installation steps:

### 1.1. Prepare a clean, dry and flat wall

1.1.1. Dust on the wall will form a cover layer, once we stick products on it with self adhesive tape, the tape will only stick to that dust and fall down with it.

1.1.2. Water or high humidity will affect the viscosity of tape, must apply products on dry area.

1.1.3. If installed area is waved, tape will not be able to achieve full application of sticking on the substrate surface, its adhesive strength will be weakened.

### 1.2. Design & Measure the desired space

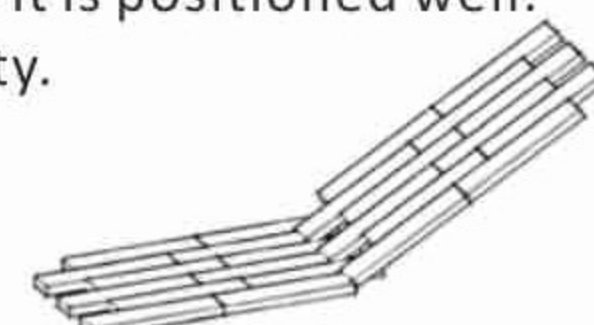
Design the pattern according to our guideline or as personalized design. Measure & calculate both the wall and the needed products. Level the wall with spirit level and do some marking to avoid further adjustment. (Once pasted, it will be difficult to move again the products)

1.3. Peel 1/4 part of the back tape from one corner and press to fix the starting point, make sure it is positioned well.

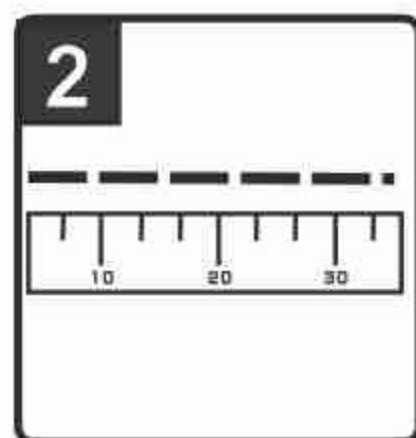
1.4. Slowly peel the rest tape off and press the whole sheet firmly on the wall to ensure durability.

Fix every tiles in correct position and keep leveling during the process.

For interlock shape product, make sure the 2<sup>nd</sup> sheet is interlocking with previous one seamlessly before removing all the film and press it on.



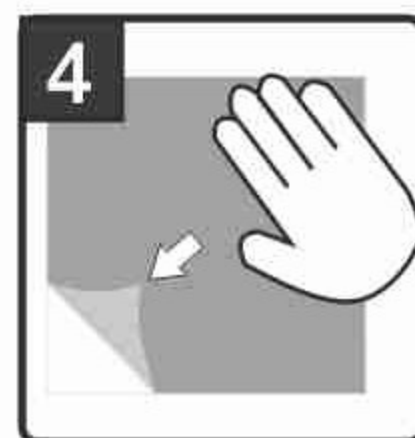
1 Make sure the surface is clean, dry, and flat.



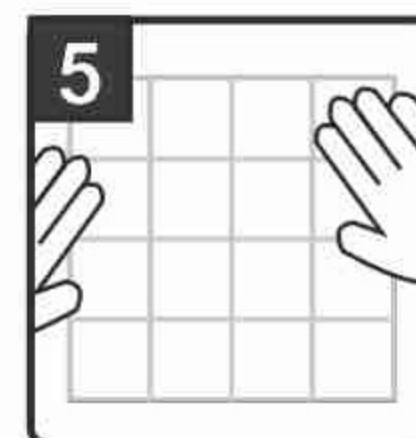
2 Measure & level the desired space before installation.



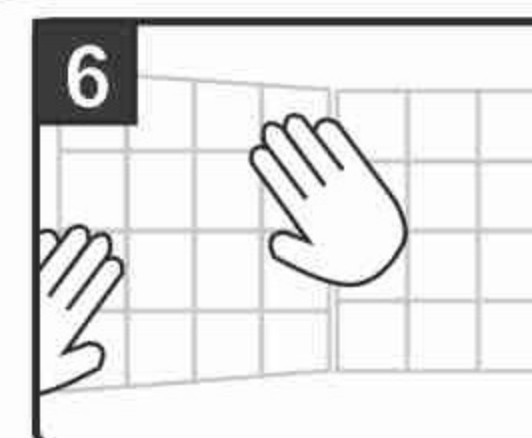
3 If needed, cut the tiles with utility knives or saws to fit the space.



4 Remove 1/4 of the back film from one corner. Fix the position & stick the tile on.



5 Slowly remove the entire film of the tile, press it firmly to make sure it's sticking on.



6 Keep leveling in the whole process, applying the next sheet right next to the previous one.



## 2. Cutting

Cut the product with utility knife or scissors, for more accurate cutting, specially for edge trimming, jig saw or hacksaw will be preferable.

Tip: Reduce cutting by strictly measuring & clever planning, as there is a risk of material damage / material breakage. For markings during cutting, use only "non-permanent pins". Keep the spare parts that's been cut to fill any left space to save the material.

## 3. Protection

Use soft dry towel to remove dust for daily maintaining. Products have wearlayer which is water proof, slight scratch will also be prevent.

Tools								
Material	Sponge or Dry Towel	Pencil or marker	Tape Measure or Ruler	Level or Laser	Safety Glasses	Chop Saw	Blade	Silicon or Adhesive
LVT	✓	✓	✓	✓	✓	✓	✓	For textured surfaces & walls.
SPC	✓	✓	✓	✓	✓	✓	✓	

## 4. Application

Application Requirements					
<b>Positive Requirements (Blue Checkmark):</b> DUST-FREE, CLEAN, DRY, NON-FLAKING, HARD, FLAT, SMOOTH	GLASS SURFACE	VENEER SURFACE	ARTIFICIAL STONE	STONE	FLAT PRINTING WALL
					
	PLASTIC SURFACE	CERAMIC TILE	WOODEN SURFACE	METAL SURFACE	WALLPAPER
<b>Negative Requirements (Red X):</b> RUGGED, UNEVEN, OILY, WET, DUSTY, WARPED, FLAKING					
	STUCCO WALL	BRICK WALL	RUGGED WALL	WET WALL	WARPED WALL
					
	EARTH WALL	FLAKING WALL	OILY WALL		