

# TREMONT TRIM

## MORTISE HANDLESET ENTRANCE TRIM



### SPECIFICATIONS

LOCK TYPE	Mortise
STYLE	Transitional
LOCK FUNCTION	Entry
MAXIMUM DOOR THICKNESS	2.25
MINIMUM DOOR THICKNESS	1.5

# TREMONT TRIM

## MORTISE HANDLESET ENTRANCE TRIM



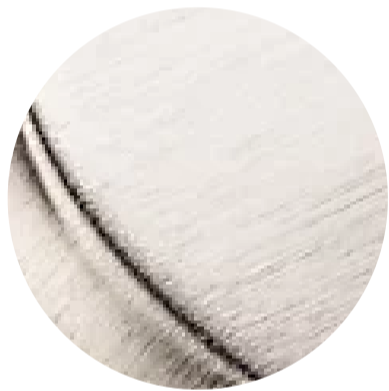
### ESTATE PORTFOLIO

Model Number:  
6542.102.ENTR

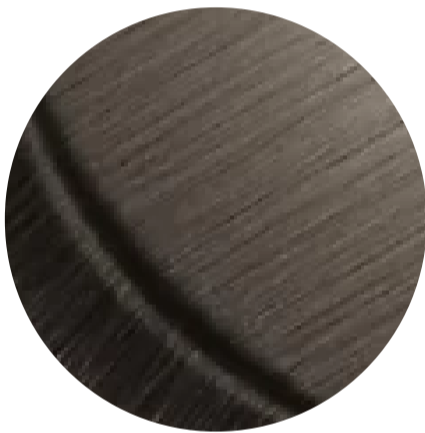
### Key Features

- ✓ The Tremont Entrance Trim is a superb example of high-quality aesthetics and craftsmanship that will elevate any doors functionality and visual appeal.
  - ✓ Shown in Standard Entry Function, but also available in Double Cylinder, Full Dummy, Exterior Only and Back to Back, as well as individual escutcheons Cut for Cylinder, Cut for Emergency Release, Cut for Knob, Cut for Turn Knob and Cut for Privacy.
  - ✓ Customize by substituting any interior knob or lever of your choice or by utilizing the interior escutcheon plate to create passage, privacy, dummy or entry sets. Thin and thick door kits available to accommodate a wide range of door conditions and applications.
- The mortise application is a unique door condition that requires custom door preparation, specification and installation. The full mortise
- ✓ specification requires multiple components, including this decorative trim. To learn more about specifying mortise, please refer to the "Know Before You Go" section on this page.

### FINISHES OPTIONS



Lifetime (PVD) Satin Nickel - 056



Lifetime (PVD) Graphite Nickel - 076



Lifetime (PVD) Polished Nickel - 055



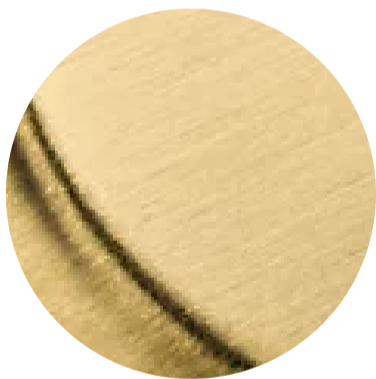
Polished Chrome - 260



Distressed Oil Rubbed Bronze - 402



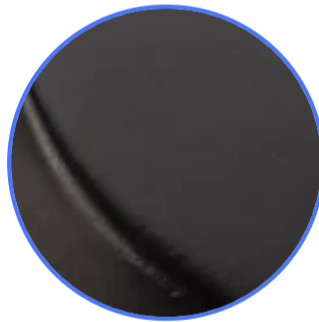
Lifetime (PVD) Polished Brass - 003



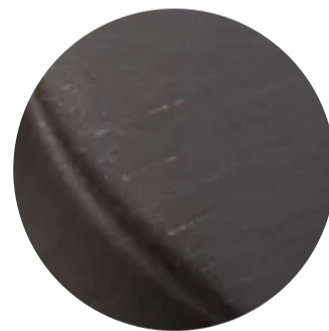
Lifetime (PVD) Satin Brass - 044



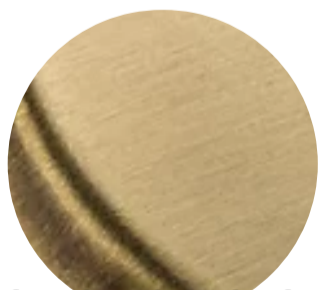
Satin Black - 190



Oil Rubbed Bronze - 102



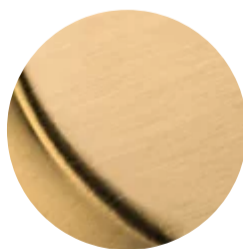
Venetian Bronze - 112, 11P



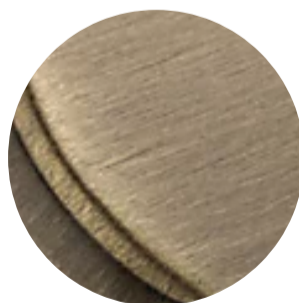
Satin Brass & Brown - 060



Non-lacquered Brass - 031  
Mortise



Vintage Brass - 033



Satin Brass & Black - 050

### SPECIFICATIONS

Satin Brass & Brown - 060

LOCK TYPE

Mortise

STYLE

Transitional

LOCK FUNCTION

Entry

MAXIMUM DOOR THICKNESS

2.25

MINIMUM DOOR THICKNESS

1.5

# TREMONT TRIM

## MORTISE HANDLESET ENTRANCE TRIM



Set	6542.xxx.DBLC	Double Cylinder	Set
Set	6542.xxx.FD	Full Dummy	Set
Set	6542.xxx.ENFD†	1 Active Entrance Set + 1 Full Dummy Set	2 Sets
Ext	6605.xxx.BB75	Entrance Back-to-Back	Set
Ext	6605.xxx.BB30	Entrance Back-to-Back	Set
Ext	6605.xxx.BBFD	Dummy Back-to-Back	Set
Ext	6605.xxx	Active Exterior Trim	Each
Ext	6605.xxx.DM	Dummy Exterior Trim	Each
Interior	6796.xxx.KC	Interior Escutcheon – Cut for Cylinder (KC), Double Cylinder	Each
Interior	6796.xxx.KE**	Cut for Emergency Release (KE**)	Each
Interior	6796.xxx.KN	Cut for Knob (KN), Passage/Dummy	Each
Interior	6796.xxx.KT	Interior Escutcheon w/ Turn Knob (KT)	Each
Interior	6796.xxx.KP <sup>1</sup>	Escutcheons Cut for Privacy (KP)	Pair

- <sup>1</sup>†.ENFD only available in 050 & 112, to ensure a finish match on all components.

## SPECIFICATIONS

LOCK TYPE	Mortise
STYLE	Transitional
LOCK FUNCTION	Entry
MAXIMUM DOOR THICKNESS	2.25
MINIMUM DOOR THICKNESS	1.5