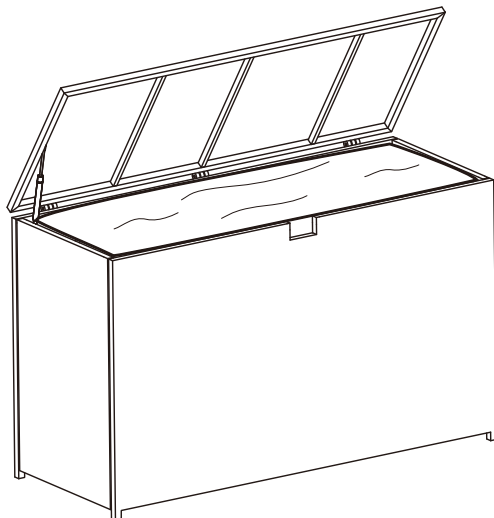


STORAGE BOX



Thank you for choosing us!

Our goal is to provide high quality outdoor furniture with outstanding customer service-all at an affordable price.

Please let us know how we are doing!

Problems?

(Missing pieces, wrong pieces...)

We will fix it immediately. Send us an email at

help@joivi.com

Happy?

Please leave us a review!

You can make others happy too!



**IMPORTANT, RETAIN FOR
FUTURE REFERENCE:
READ CAREFULLY.**

Safety

- ☒ For domestic use only.
- ☒ Always use on firm level ground.
- ☒ Don't tighten all the bolts before the product is fully assembled.
- ☒ It would be useful to ask someone to help you assemble the product.
- ☒ Periodic structural checks of this product should be undertaken, do not use if you have any doubts about its fitness for purpose.
- ☒ Do not stand on the box.
- ☒ Do not sit on the box.
- ☒ Do not let children play with this product.



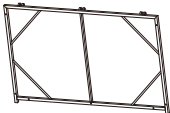
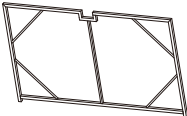
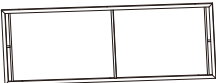
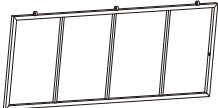

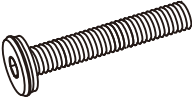
At the beginning of the season

- ☒ Check to ensure that all components and fixings of this product are secure, do not use if you have any doubts about its fitness for purpose.

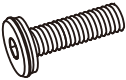



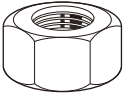
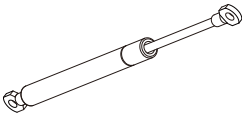

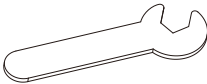
At the end of the season

- ☒ This product should be stored under cover during prolonged spells of adverse weather (wet or cold) and also during the winter (ideally in a garden shed or garage).
- ☒ Always clean and dry thoroughly before storage.

COMPONENT LIST – STORAGE BOX

Item no.	Reference Image	Description	Qty.
A		Left Panel	1
B		Right Panel	1
C		Back Panel	1
D		Front Panel	1
E		Bottom Panel	1
F		Top Panel	1
G		Lining	1
H		M6*50 Head Cap Screws	3

COMPONENT LIST – STORAGE BOX

Item no.	Reference Image	Description	Qty.
I		M6*35 Head Cap Screws	14
J		M6*25 Head Cap Screws	2
K		Washer	16
L		Plastic Washer	2
M		Nut	3
P		Gas Spring	1
Q		Hex Wrench	1
R		Spanner	1

NOTE:

When tightening the Screws, tighten sequentially.

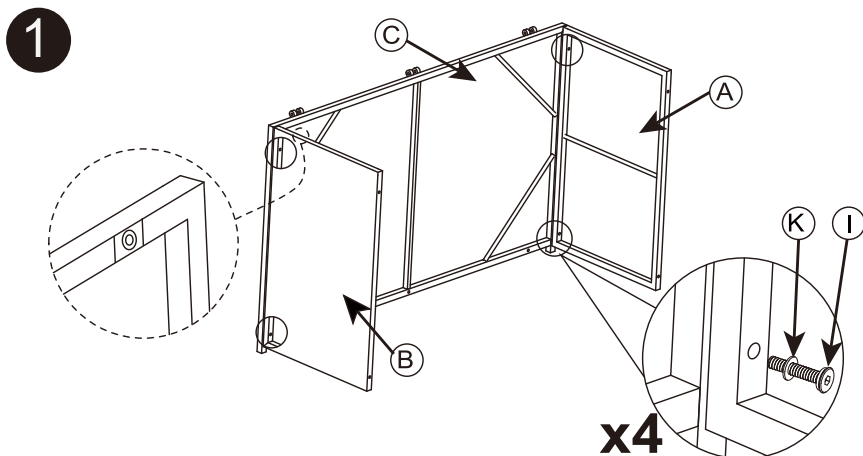
DO NOT tighten any Screws fully and then move on to the next one.

This may cause the frame to warp.

If there is still wobbles or screw holes cannot be aligned,

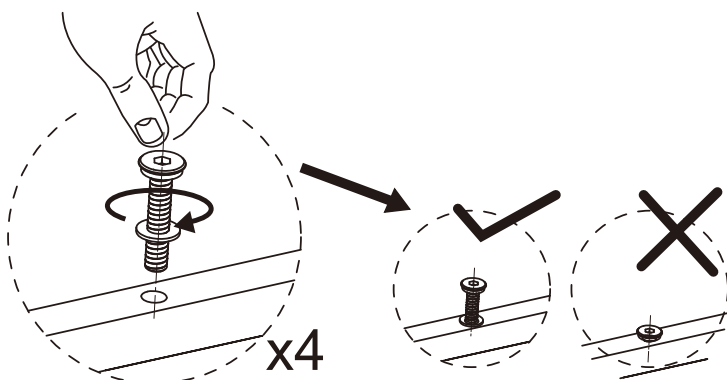
loosen the screws and execute this same process.

If the Box is not stable it could lead to damage to the product.



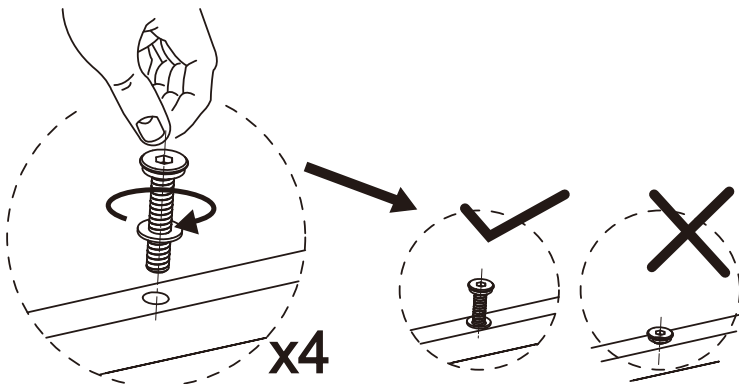
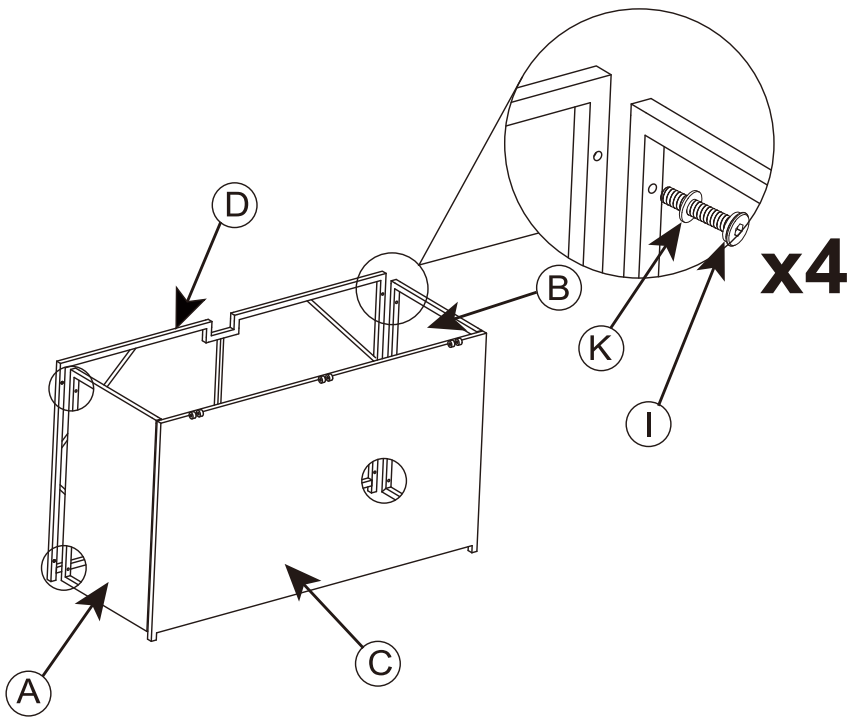
Please pay attention to this hole on the part B for connecting the gas spring. This hole is closer to the rear.

Please don't mix the positions of part A&B to avoid wrong installation of the gas spring.



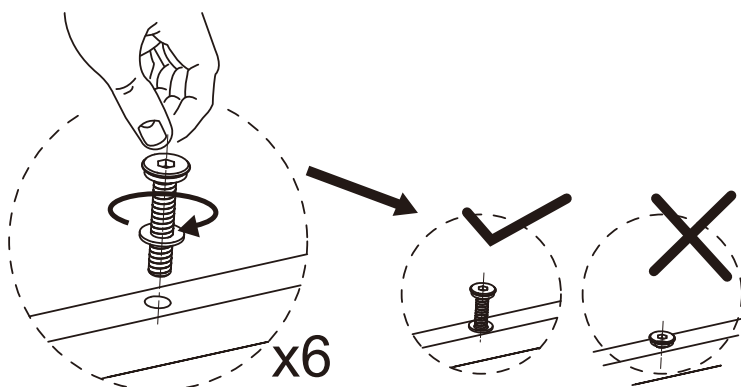
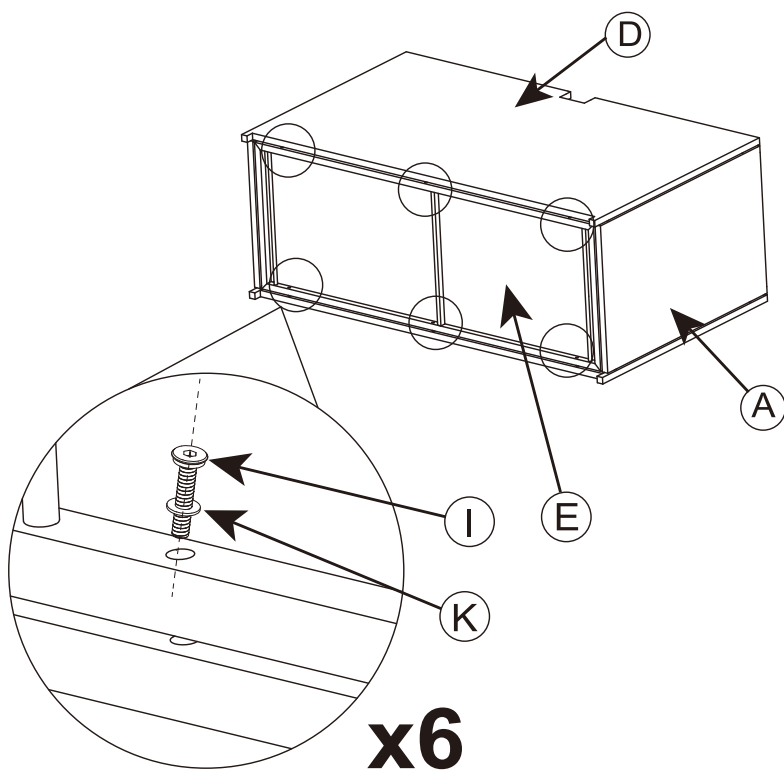
NOTE:DO NOT TIGHTEN THE SCREWS COMPLETELY.

2



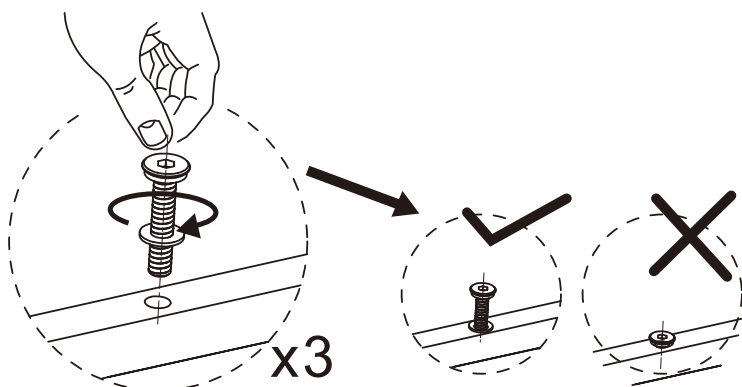
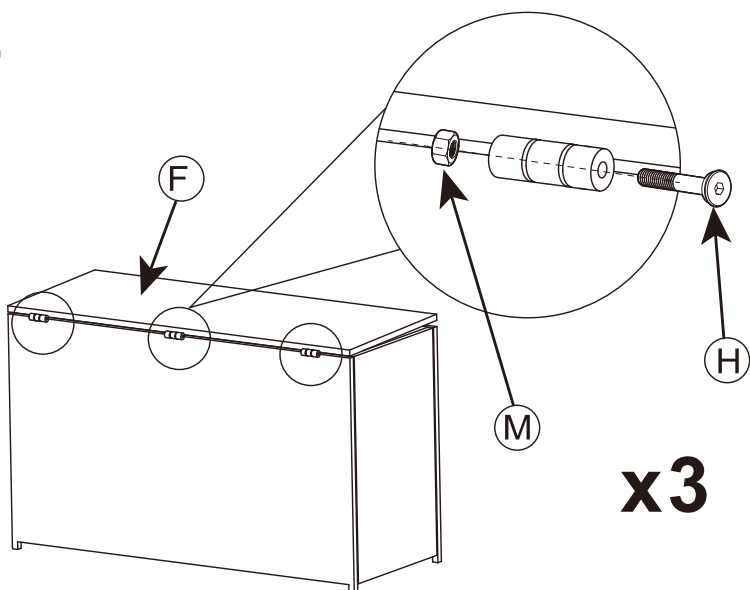
NOTE:DO NOT TIGHTEN THE SCREWS COMPLETELY.

3



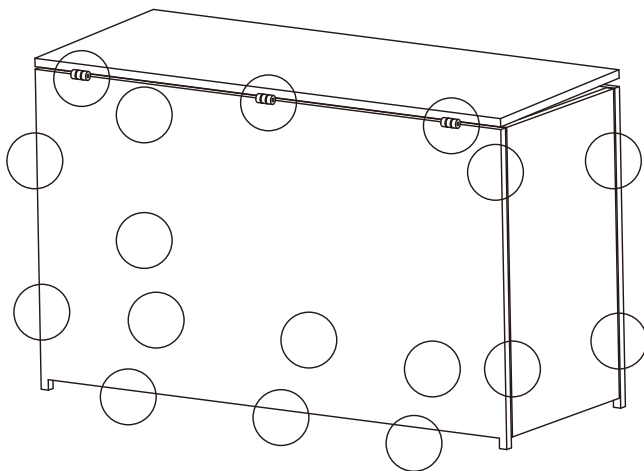
NOTE:DO NOT TIGHTEN THE SCREWS COMPLETELY.

4

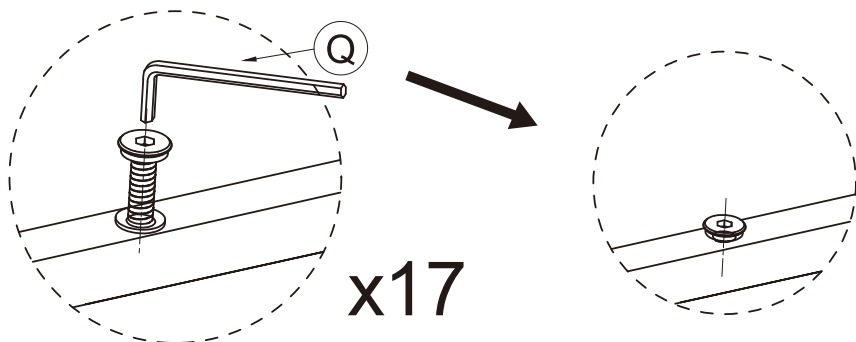


NOTE:DO NOT TIGHTEN THE SCREWS COMPLETELY.

5

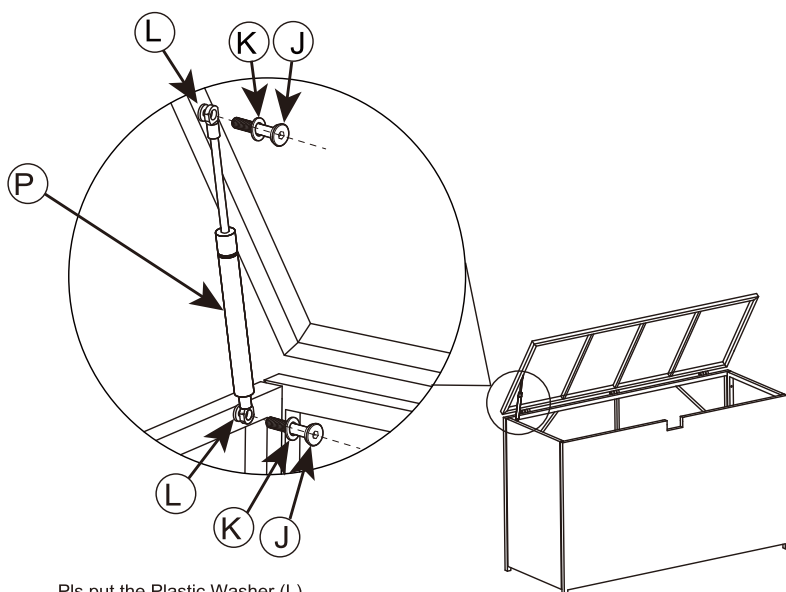


Tighten all 17 Screws into place with Hex Wrench (Q).



NOTE:IF ANY SCREW HOLES CANNOT BE ALIGNED,
LOOSEN ALL THE SCREWS AND GO BACK STEP
1 AND RESTART ASSEMBLY.

6



Pls put the Plastic Washer (L)
on the Right Top & Right Bottom
of Gas Sping (P).

7

