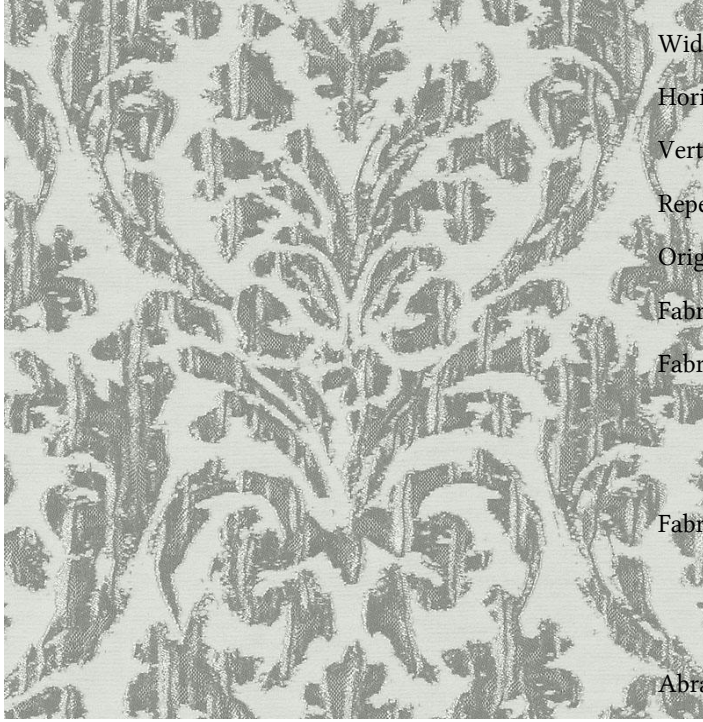




Fabric Detail for:Di61351 | 499-zinc



Pattern: Di61351 | 499-zinc
Width: 54"
Horizontal Repeat: 13.500"
Vertical Repeat: 11.250"
Repeat Direction: Up The Roll
Origin: Turkey
Fabric Grade: 01
Fabric Contents: 50% Polyester
37% Cotton
13% Rayon
Fabric Performance: CA 117 2013
NFPA 260
UFAC - Class 1
Abrasion: 30,000 Double Rubs
Book Name: ALAMEDA ALL PURPOSE