

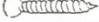




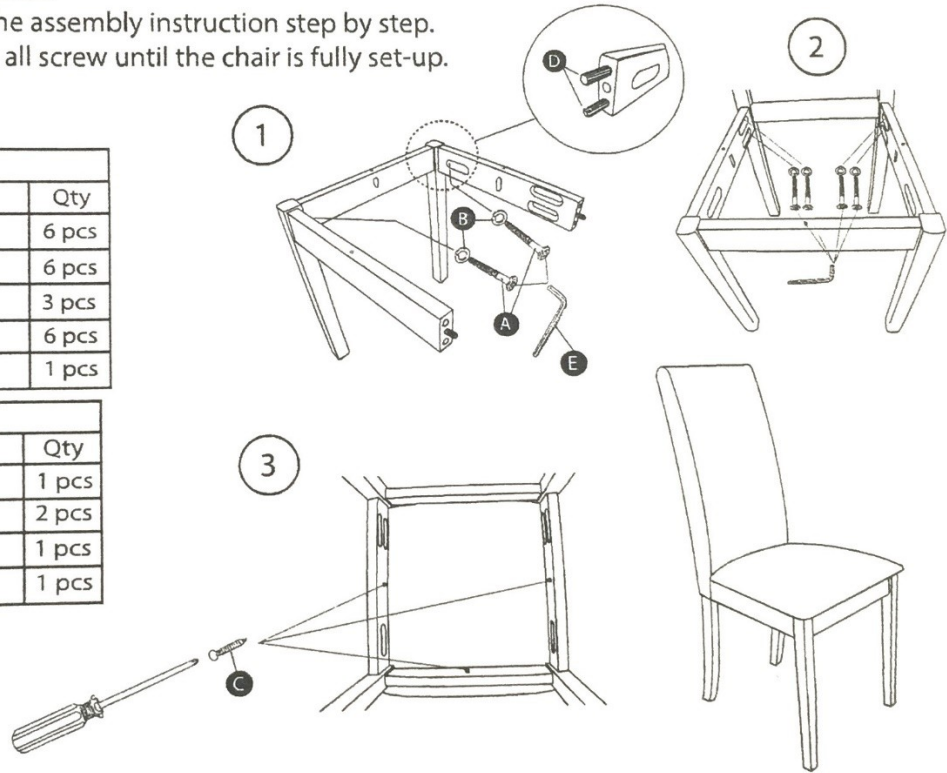
ASSAMBLY INSTRUCTION

MODEL: FALLABELLA CHAIR

- Important note:
- Place all wooden part on a clean and smooth surface such as rug or carpet to avoid the part from being scratch.
 - Please follow the assembly instruction step by step.
 - Do not tighten all screw until the chair is fully set-up.

Hardware List			
No	Description		Qty
A	JCBC M6 x 50		6 pcs
B	Spring Washer		6 pcs
C	CSK M4 x 32mm		3 pcs
D	Wood Dowel		6 pcs
E	Allen Key		1 pcs






Part List		
No	Description	Qty
1	Back Rest	1 pcs
2	Side Rail	2 pcs
3	Front Leg	1 pcs
4	Wooden Slat / Cushion	1 pcs



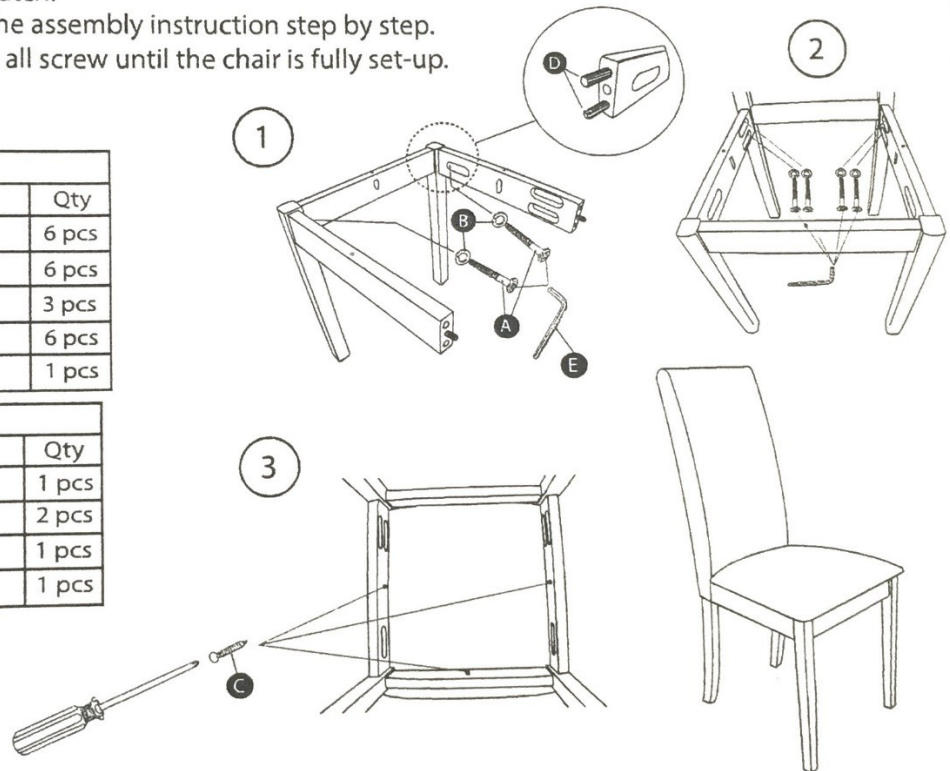
ASSAMBLY INSTRUCTION

MODEL: FALLABELLA CHAIR

- Important note:
- Place all wooden part on a clean and smooth surface such as rug or carpet to avoid the part from being scratch.
 - Please follow the assembly instruction step by step.
 - Do not tighten all screw until the chair is fully set-up.

Hardware List			
No	Description		Qty
A	JCBC M6 x 50		6 pcs
B	Spring Washer		6 pcs
C	CSK M4 x 32mm		3 pcs
D	Wood Dowel		6 pcs
E	Allen Key		1 pcs





Part List		
No	Description	Qty
1	Back Rest	1 pcs
2	Side Rail	2 pcs
3	Front Leg	1 pcs
4	Wooden Slat / Cushion	1 pcs



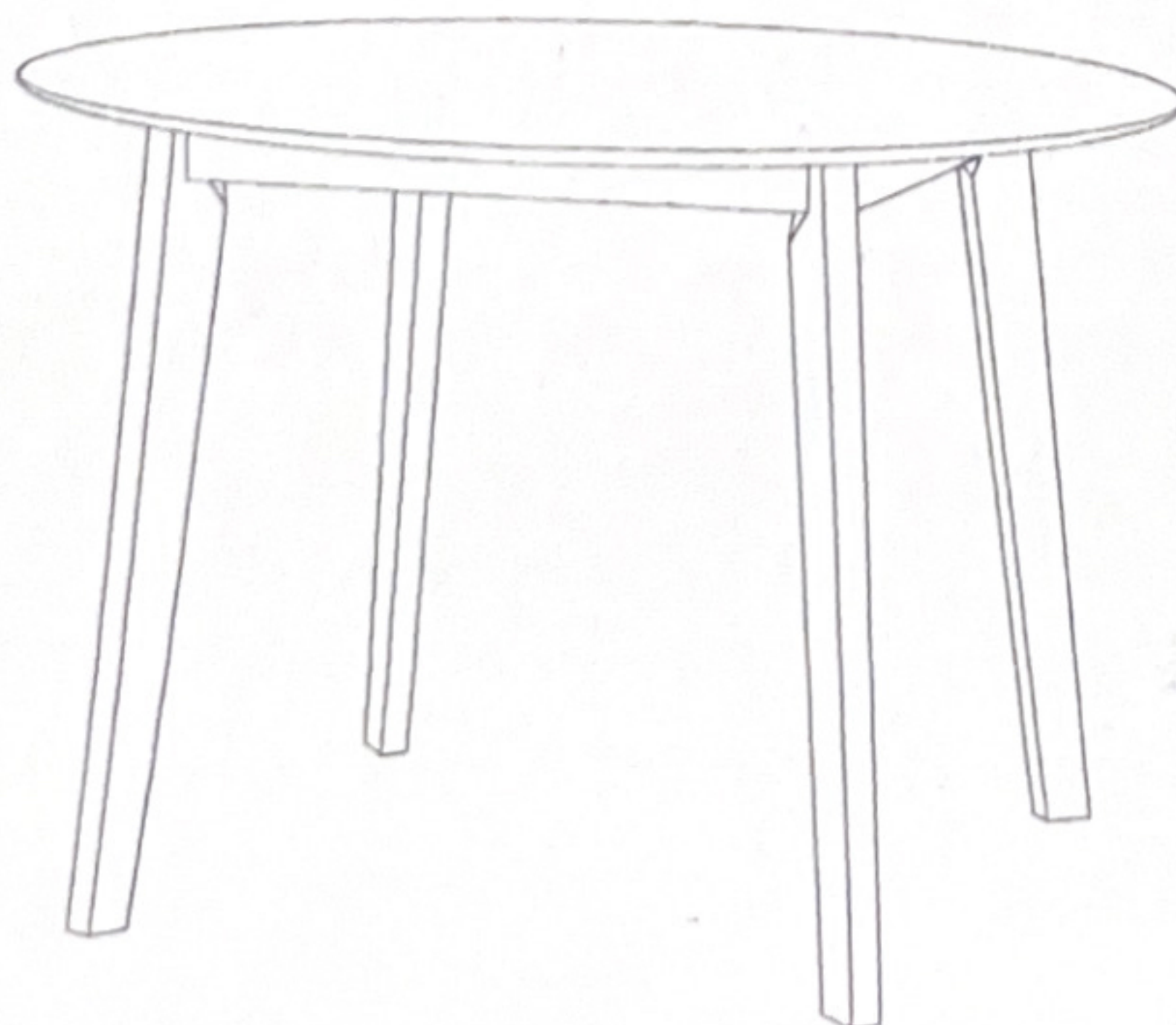
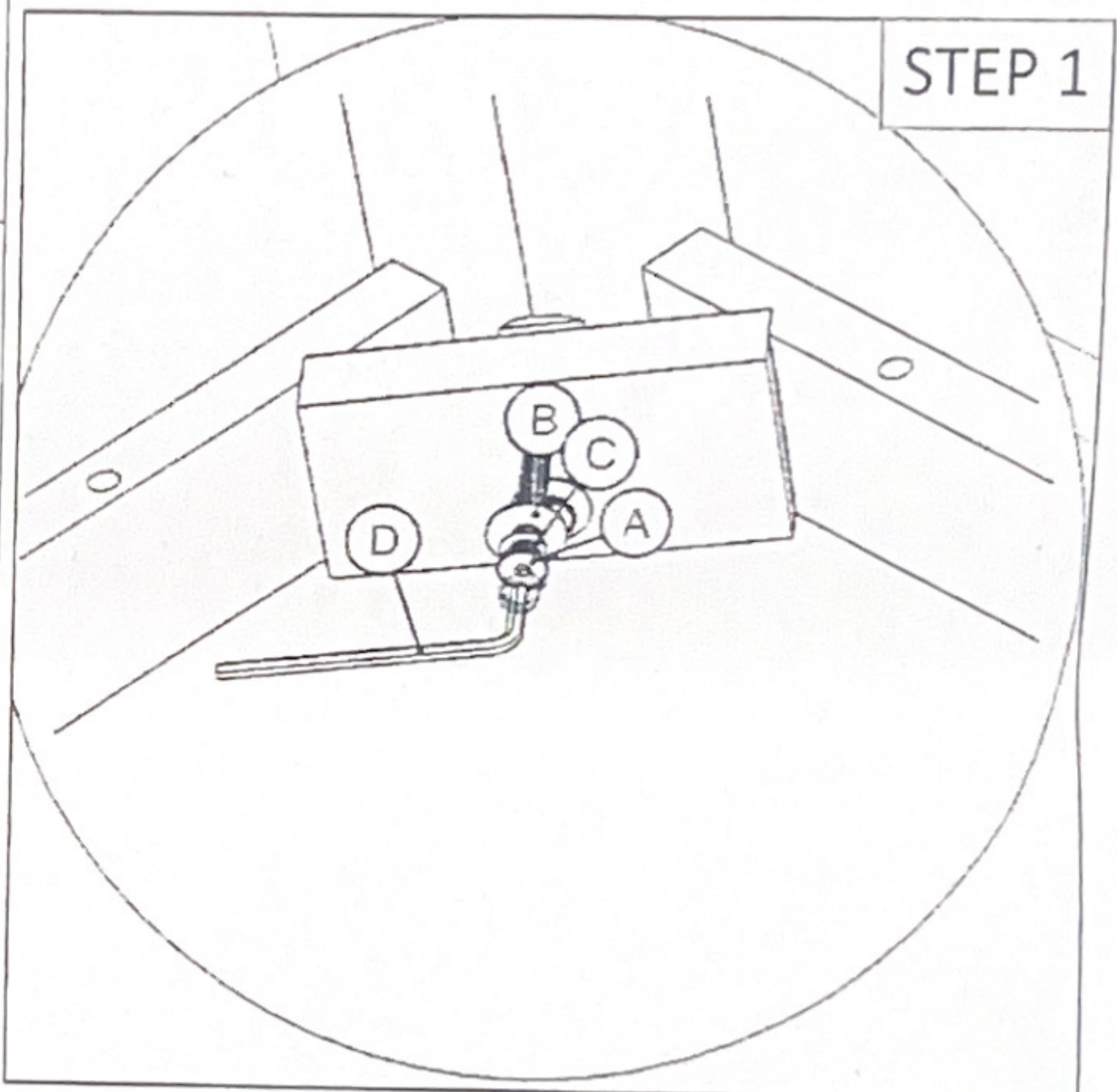
ASSEMBLY INSTRUCTIONS

Thanks you for purchasing this quality product. Be sure to check all packing material carefully for small parts which may have come loose inside the carton during the shipment. Count all parts and metal hardware, compare all parts list below to be sure all parts are present.

NOTE: HARDWARE AND QUANTITY SHOW BELOW ARE FOR 1 UNIT ASSEMBLY.

HARDWARE LIST		
NO	DESCRIPTION	QTY
A.	 JCBC M6 x 70	8 PCS
B	 M6 FLAT WASHER	8 PCS
C.	 M6 SPRING WASHER	8 PCS
D	 ALLEN KEY	1 PCS

PART LIST		
NO	DESCRIPTION	QTY
1.	TABLE TOP	1 PCS
2	TABLE LEG	4 PCS



**COMPLETE
ASSEMBLE**