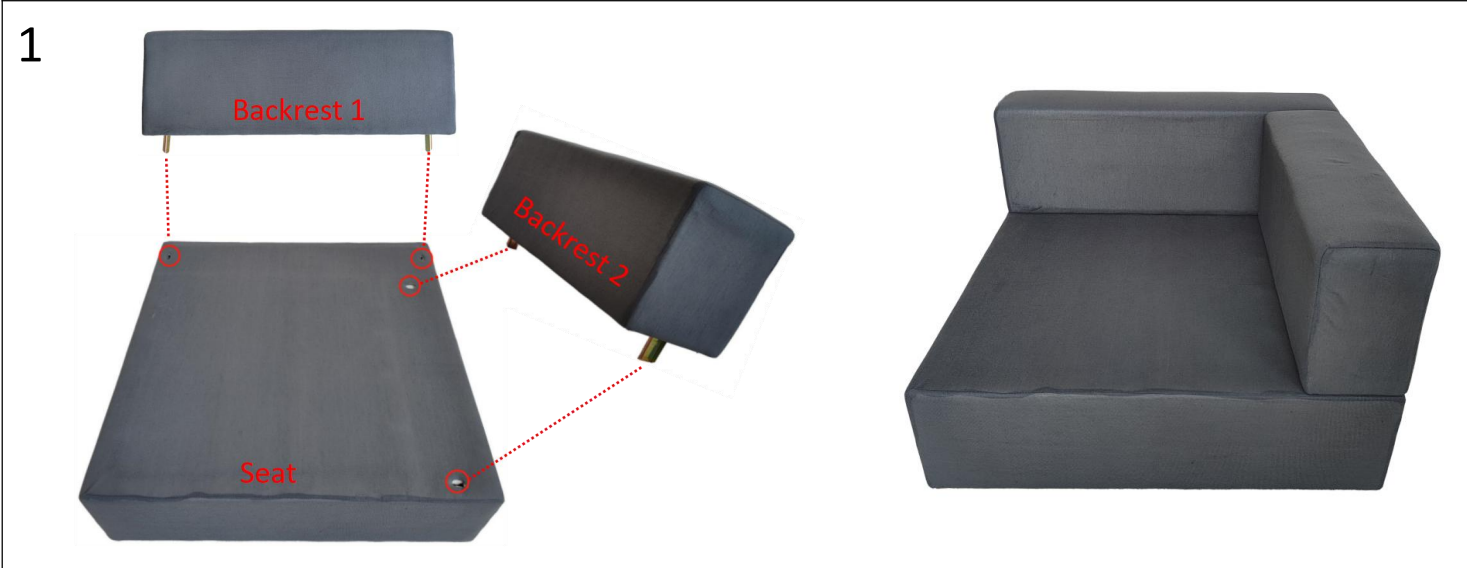


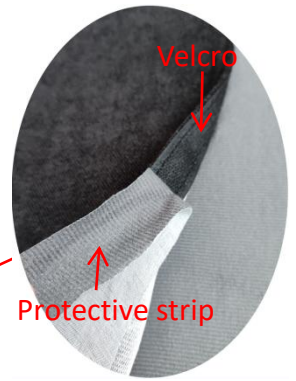
# Installation

To avoid scratches and swallowing parts, please do not install by children!

Hardware List		Hardware List			
	Seat	1		Backrest 1	1
	Backrest 2	1		Seat cushion	1
	Back cushion	1		Armrest cushion	1
	Sofa cover	1		Legs	4
	Buckle	1		8x20mm screw	2



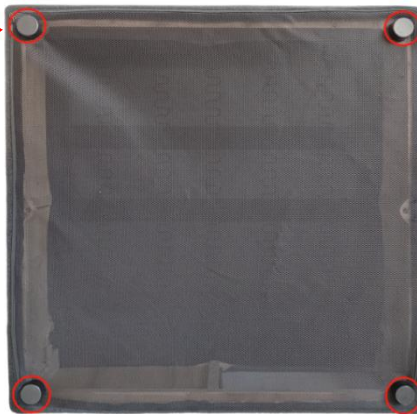
**3** Put on the sofa cover. Be careful to loosen all the zippers first.  
The mesh goes on the bottom of the couch.  
Suggestion: you'd better not remove the protective strip before finish putting the cover on.



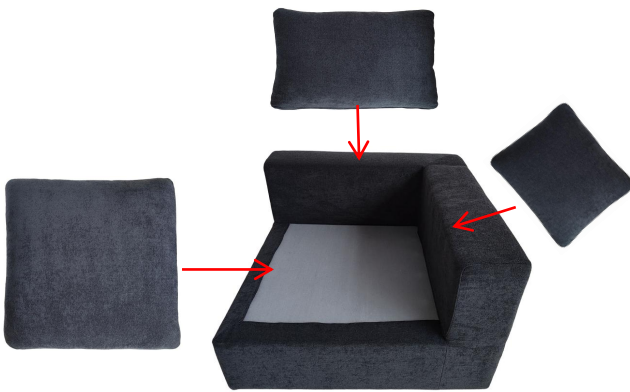
**4**



Secure the legs  
of the sofa.



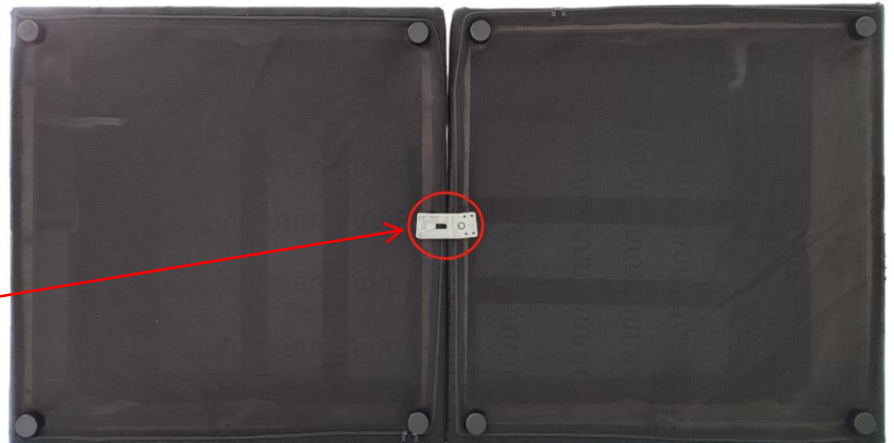
**5**



Can be used as both sides and corner piece.



**6** Apply the connection buckles to connect the seats together (or not, it's totally up to users).

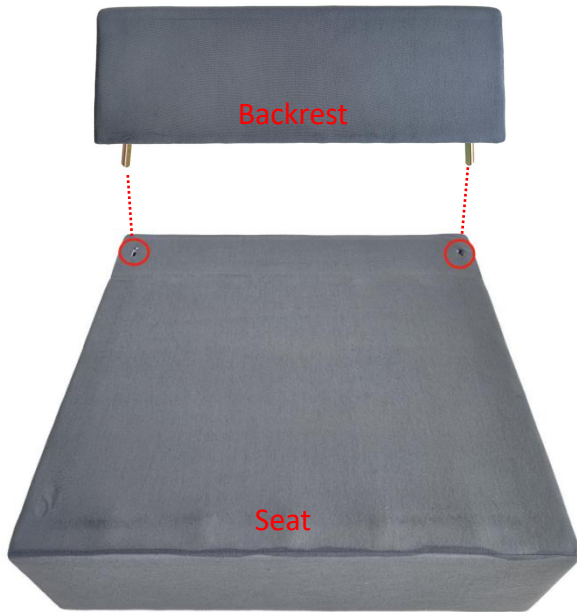


# Installation

To avoid scratches and swallowing parts, please do not install by children!

Hardware List		Hardware List			
	Seat	1		Backrest	1
	Seat cushion	1		Back cushion	1
	Sofa cover	1		Legs	4
	Buckle	1		8x20mm screw	2

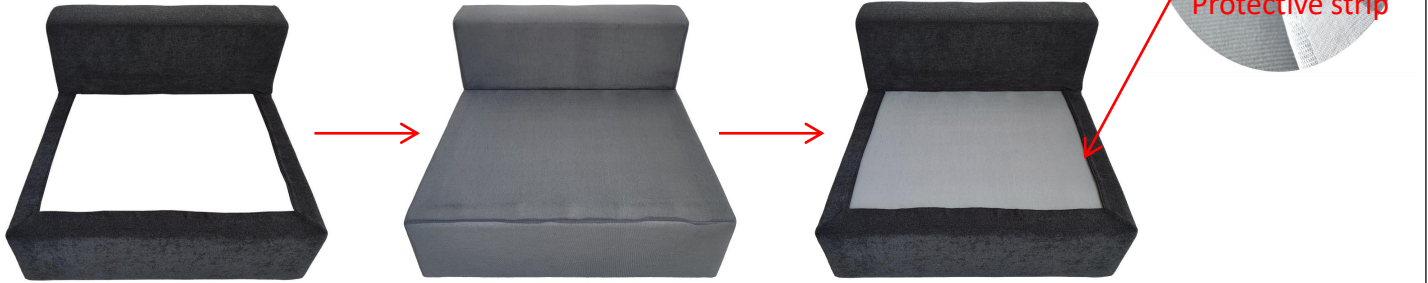
1



2



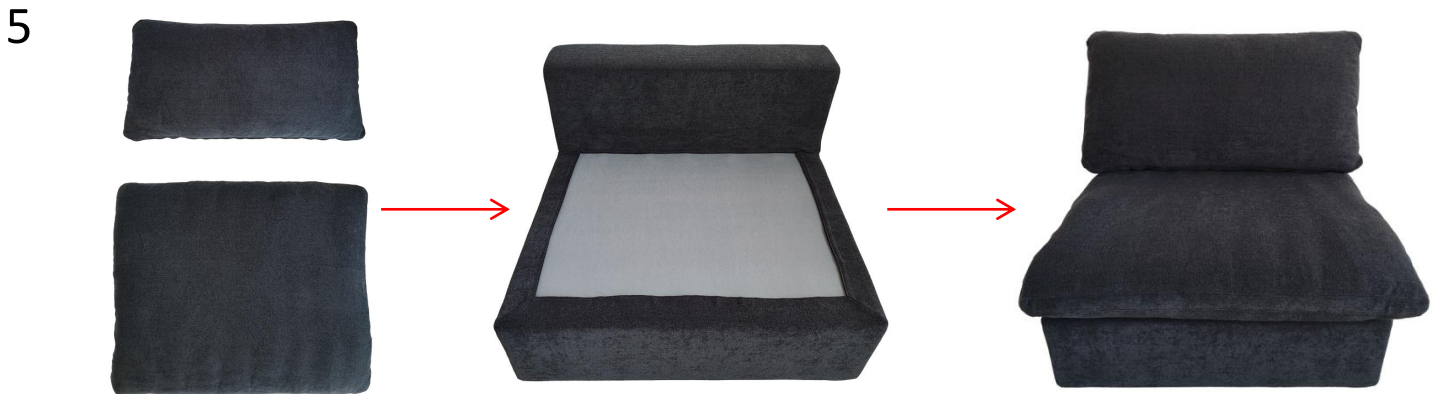
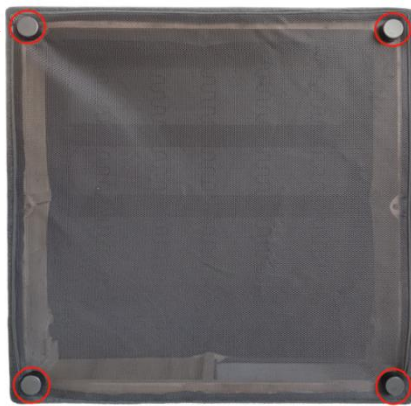
3 Put on the sofa cover. Be careful to loosen all the zippers first.  
The mesh goes on the bottom of the couch.  
Suggestion: you'd better not remove the protective strip before finish putting the cover on.



4



Secure the legs of the sofa.



6 Apply the connection buckles to connect the seats together (or not, it's totally up to users).

