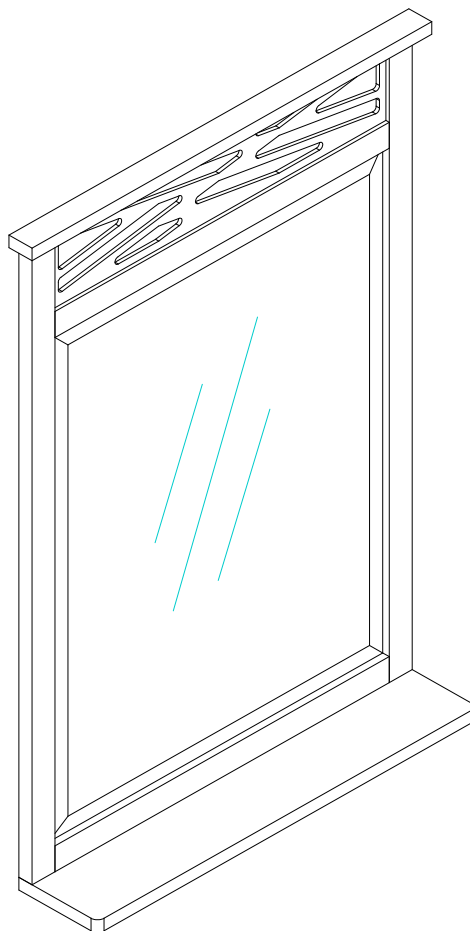
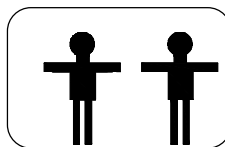


ASSEMBLY INSTRUCTIONS

Bath Mirror

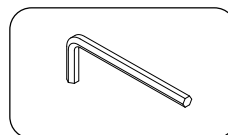
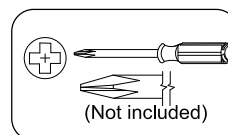


. Use of power tool to assemble this product will invalidate any claim and damage this product making it unsafe!!!
. Please assemble on a clean soft surface to avoid damage.

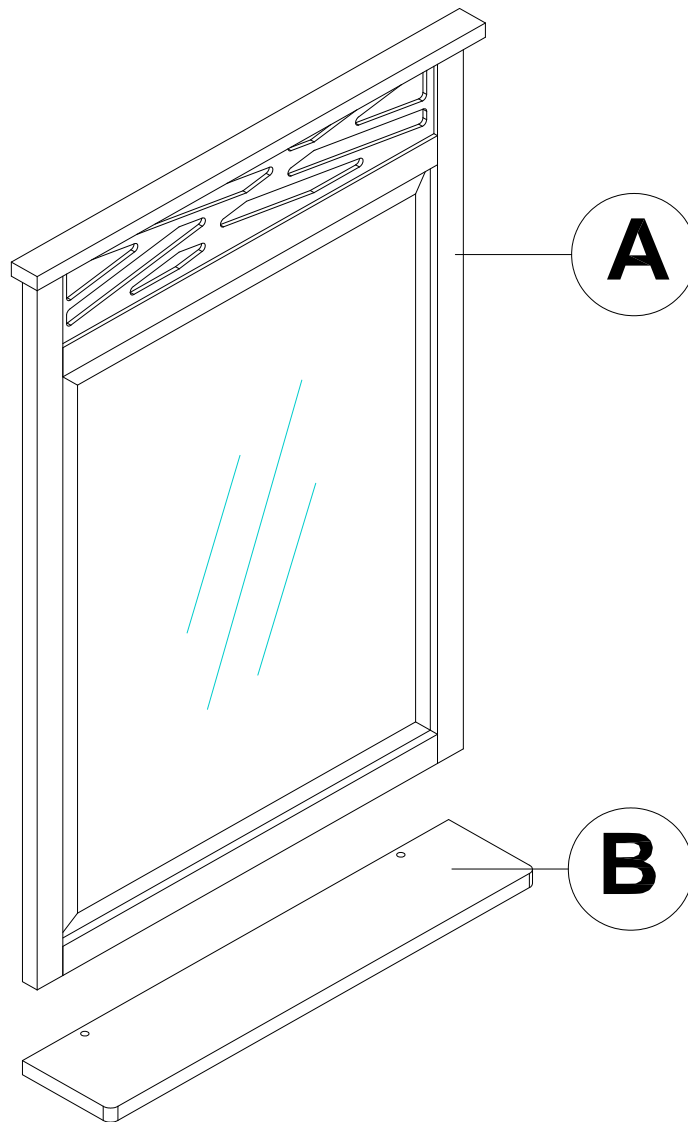


50 minutes

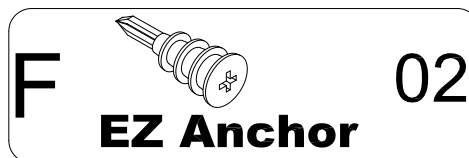
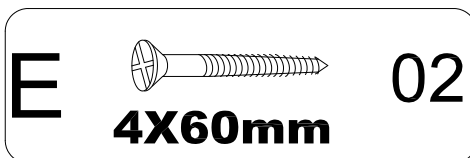
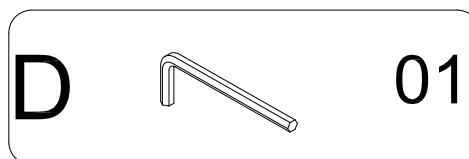
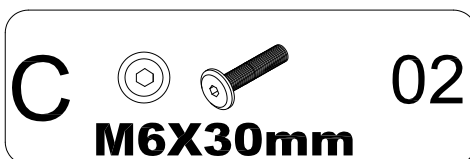
Tool Included



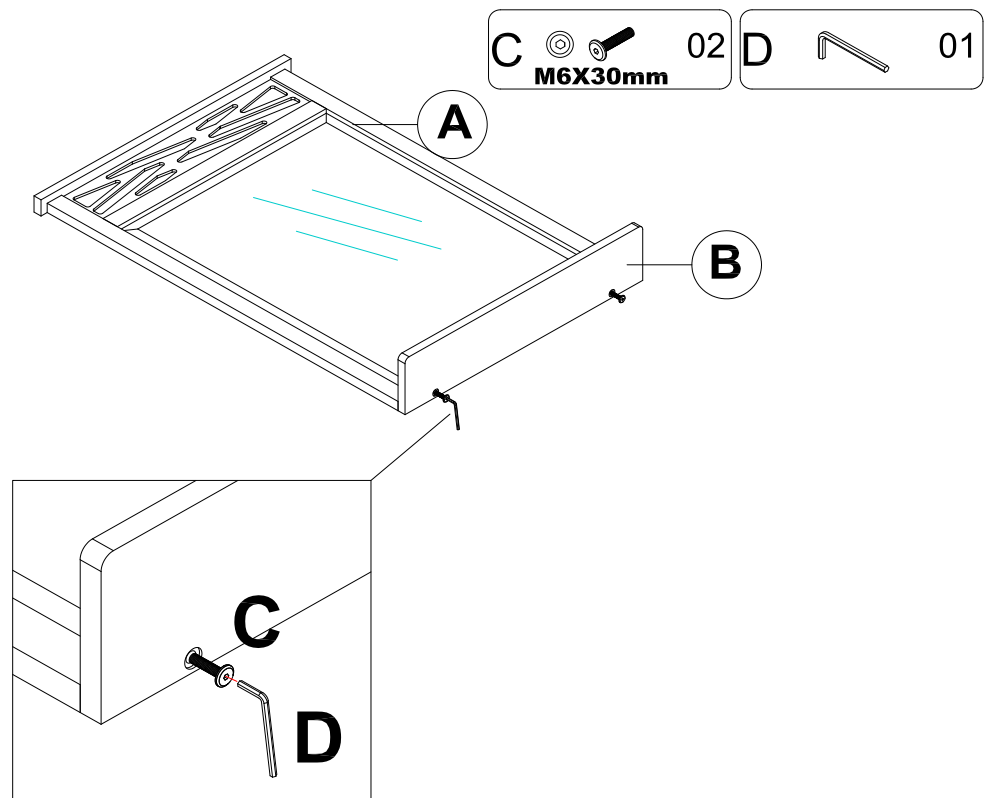
Part List-Bath Mirror



Identifying the hardware-Identify the hardware using the illustrations below.



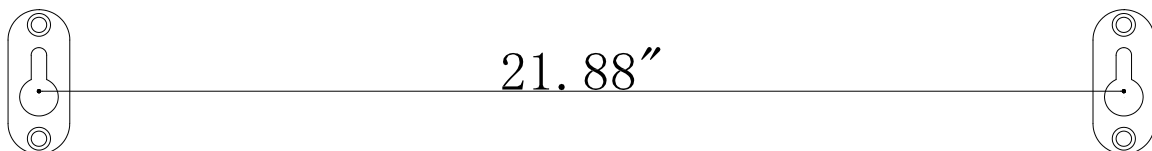
Step 1



Note: If possible, we recommend that when mounting the mirror that at least one screw is secured in to a stud.

Step 2

Measure the distance between the two key holes on back of shelf. Mark the location on the wall where the mirror will be hung.



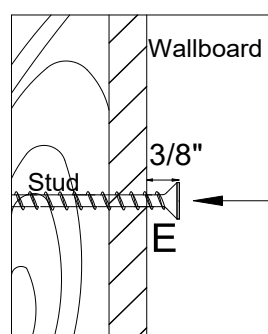
Step 3

Drill a 1/8" pilot hole 3/4" deep. This will mark the location for the screw that the mirror will hang from.

Step 4

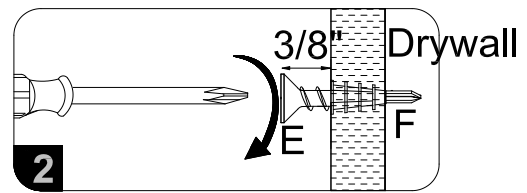
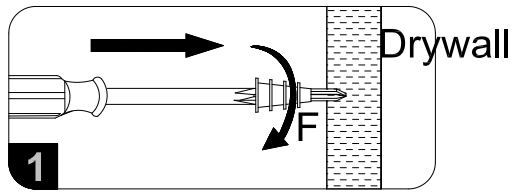
If hole location is aligned with a stud in wall, secure screw (E) directly in to the stud.

Note: Do not drive screw all the way in, keep head of screw out about 3/8".



Step 5

If hole location does not align with the stud in wall, install the EZ Anchor(F) by tapping it in to the predrilled pilot hole in the drywall.



Step 6

Secure screws(E) into EZ Anchor(F)

Step 7

Hang Mirror.

